

AMES - HWY 30 GARAGE

57073 E. HWY 30
Ames, IA 50010

Directions

From US HWY 30, east of I-35, use Exit 153 (580th Street). Head north and take the first road (Turing Street) to the west. Follow Turing Street for approximately 1 mile. The Ames garage is located on the north side of the road. Enter the east door on the south side of the building. The training room is upstairs.

Contact Information

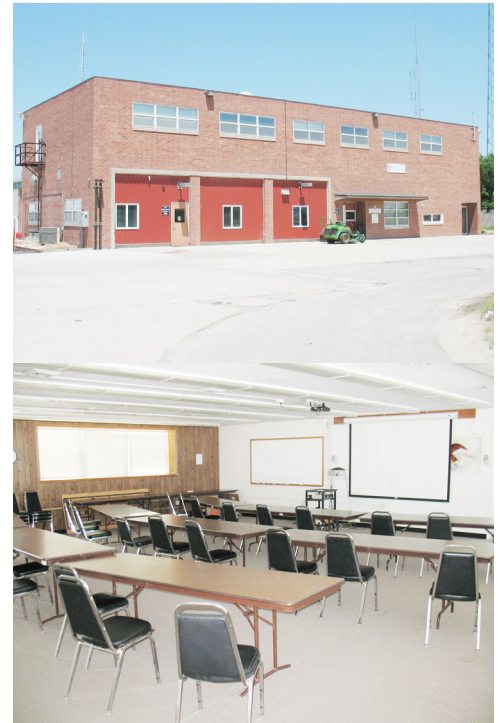
Telephone: 515-233-7915

Contact Person: Brian Squier

E-mail: brian.squier@iowadot.us

Hotels

AmericInn By Wyndham Ames	515-233-1005
BW Plus Univ. Park Inn & Suites	515-296-2500
Comfort Inn & Suites	877-424-6423
Gateway	800-367-2637



AMES - EMCR

800 Lincoln Way
Ames, IA 50010-6993

Directions

Take US 30 to Duff Ave. exit. North on Duff Ave. to 3rd St. then West. 3rd St. turns into 4th St. DOT is on the North side of 4th St. Enter through gate - it is the first building on the East side. Parking available South or West of Materials building. Enter at main Materials entrance on the East side of the building.

Contact Information

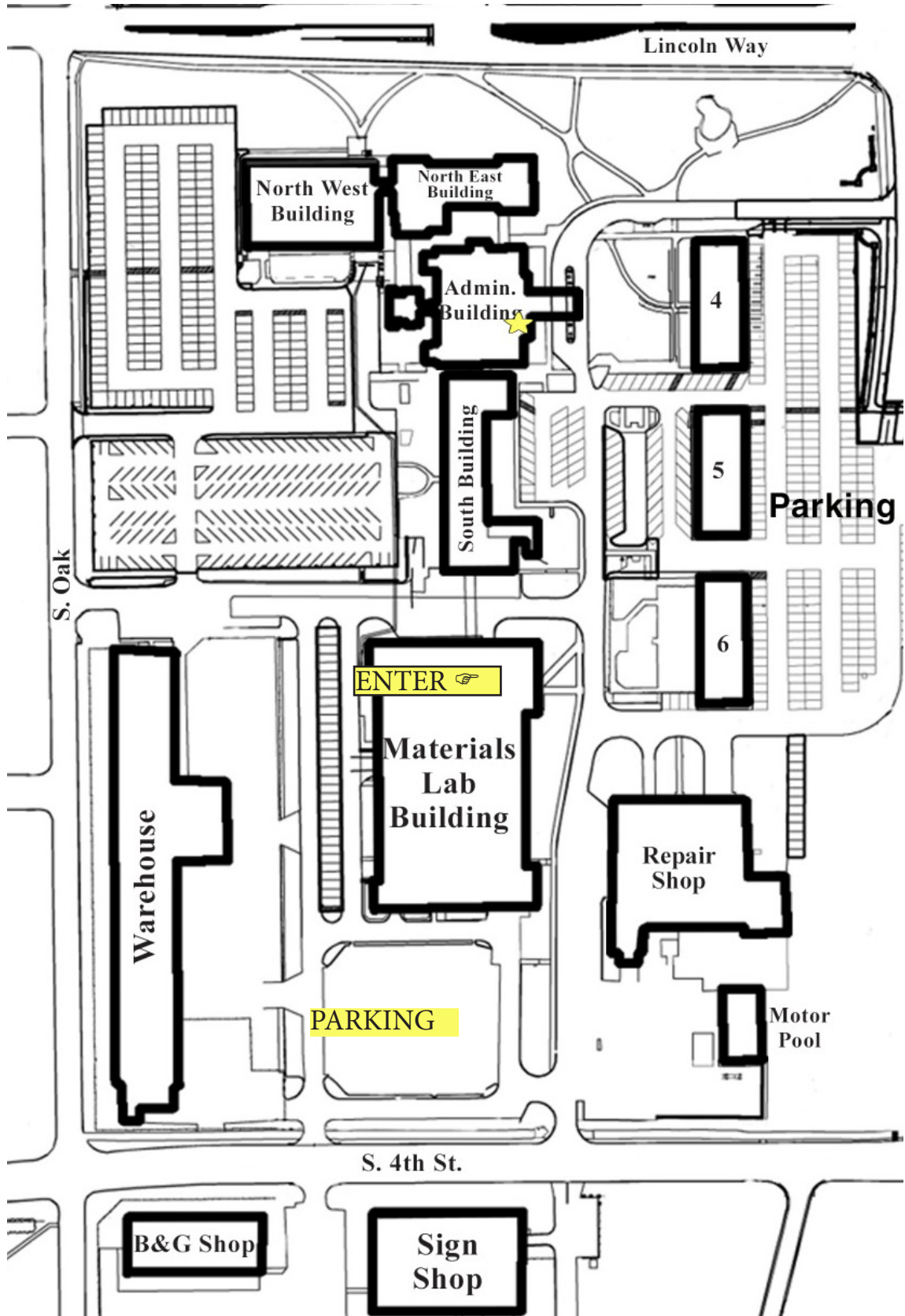
Telephone: 515-233-7915

Contact Person: Brian Squier
E-mail: brian.squier@iowadot.us

Hotels

AmericInn By Wyndham Ames	515-233-1005
BW Plus Univ. Park Inn & Suites	515-296-2500
Comfort Inn & Suites	877-424-6423
Gateway	800-367-2637
Grandstay Hotel & Suites	855-455-7829
Quality Inn & Suites	515-232-9260
Sleep Inn & Suites	515-337-1171





Visitors to the Ames Complex must check in and receive a visitor's badge. This can be done at the main entrance to the Administration building (yellow star above).

DMACC - BOONE CAMPUS

1125 Hancock Drive
Boone, IA 50036

Directions

From US Hwy 30, turn north onto South Story St. Proceed north approximately one mile to Park Avenue and then turn right (East). Park Avenue will take you into the DMACC parking lot. Parking and entrance are located on the north side of the building. Come in Door 11.

Contact Information

Telephone: 515-433-5232 or
515-433-5056

Contact Person: Kelli Bennett
E-mail: kabennett@dmacc.edu

Hotels

AmericInn & Suites	515-432-4322
Baymont Inn	515-432-8168
Cobblestone Inn & Suites	888-693-8262



DMACC - BOONE CAMPUS

Park on the north side of the building and enter Door 11, as shown below.



DISTRICT 2 - MASON CITY

428 43rd Street SW
Mason City, IA 50401

Directions

From Hwy 18 take the US 65 Exit –Turn North.
In approx. half mile turn West on 43rd St. S.W.
The IA DOT office is by the water tower, past the
State Patrol . Turn in the 428 43rd Street driveway.
Parking is to the south or the west of the building.
Enter in the south door.

Contact Information

Telephone: 641-422-9428

Contact Person: Jon Kleven
E-mail: jon.kleven@iowadot.us

Hotels

Quality Inn & Suites	641-243-4222
Days Inn by Wyndham	641-424-0210
Super 8	641-423-8855



DISTRICT 3 - SIOUX CITY

6409 Gordon Drive
Sioux City, IA 51106

Directions

From US Hwy 20, just east of the US 20/US 75 interchange, turn north into the DOT facility. The building is to the east. Parking is on the north side of the building. Entrance is in the center door on the north side of the building.

Contact Information

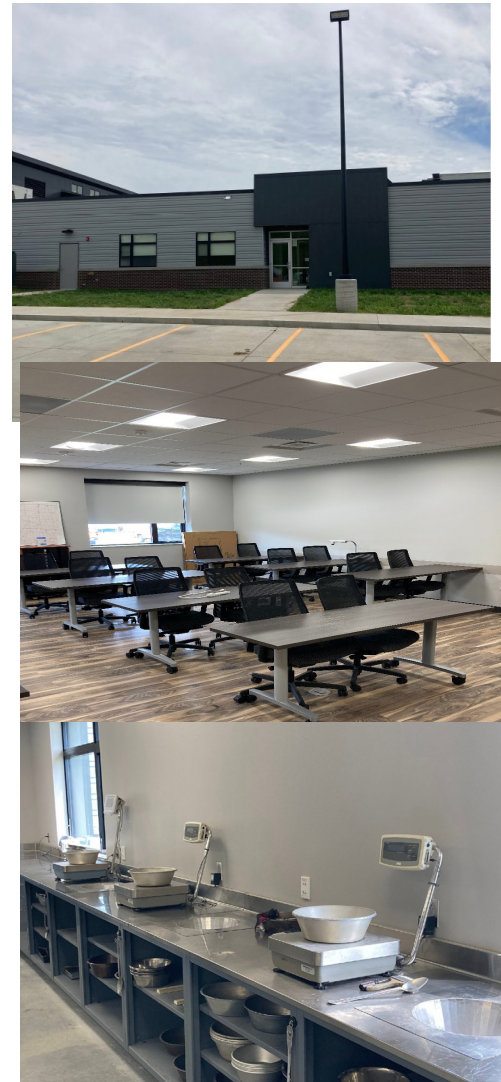
Telephone: 712-239-4713

Contact Person: Alex Crosgrove

E-mail: alex.crosgrove@iowadot.us

Hotels

AmericInn	712-255-1800
Avid Hotel	712-522-3640
Comfort Inn Sioux City	712-274-1300
Courtyard by Marriott Downtown	712-202-2700
Days Inn	712-258-8000
Super 8	712-255-8888
Wingate by Wyndham Sioux City	712-577-2662



DISTRICT 4 - ATLANTIC

2210 E. Seventh St.
Atlantic, IA 50022

Directions

Located on US 71/US 6 on the East side of Atlantic. The facility is on the North side of the highway across from the cemetery. The conference room is in the brick building, the lab is in the tan metal building. Parking is available on the south side.

Contact Information

Telephone: 712-243-7649

Contact Person: Mike Magers

E-mail: michael.magers@iowadot.us

Hotels

Americas Best Value	712-243-4723
Rock Island Inn & Suites	712-243-1600
Days Inn	712-526-0558



DISTRICT 5 - FAIRFIELD

205 E. 227th Street
Fairfield, IA 52556

Directions

Take US 34 to IA HWY 1 exit. Go South on Iowa HWY 1 to 227th street. Go East on 227th street. Building is on the north side of the street.

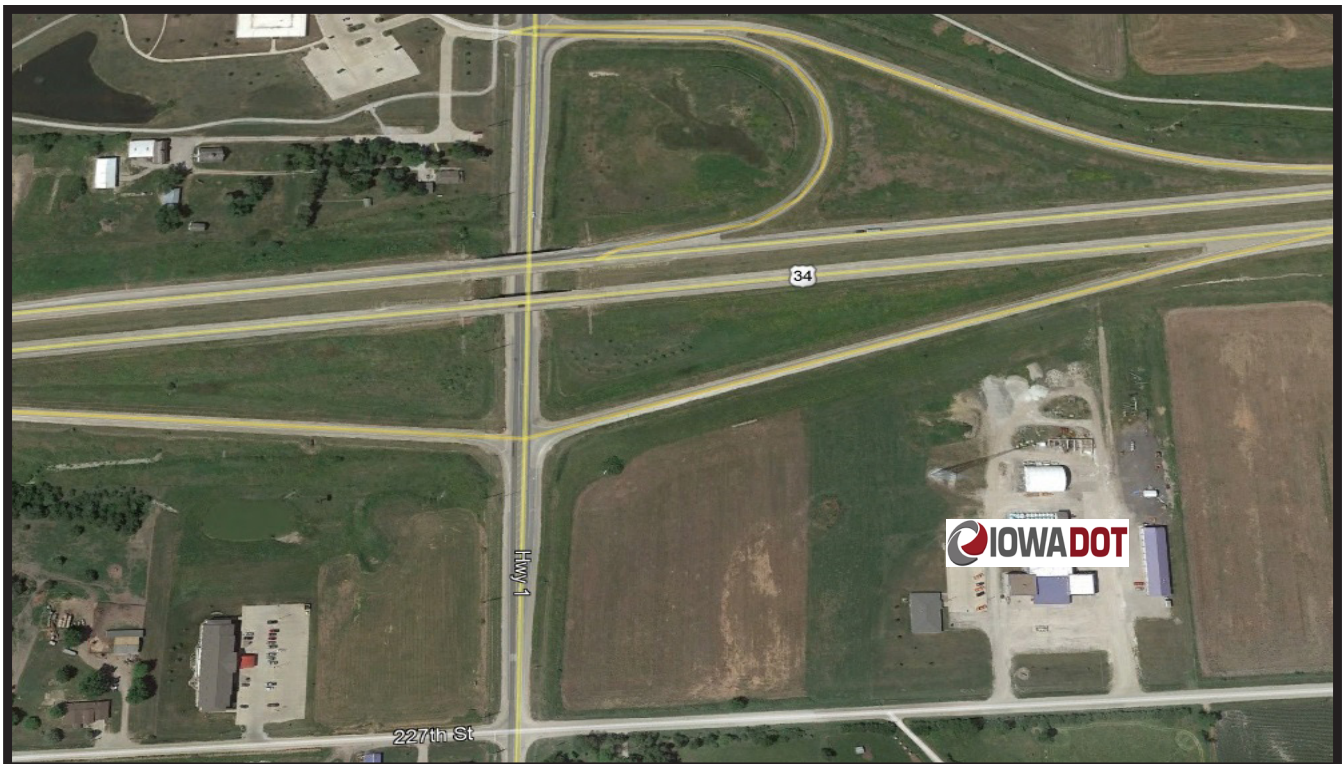
Contact Information

Telephone: 319-759-5408

Contact Person: Helen Bailey
E-mail: helen.bailey@iowadot.us

Hotels

AmericInn	866-441-9308
Boarders Inn & Suites	641-451-6421
Super 8 Motel	641-458-4189



DISTRICT 6 - CEDAR RAPIDS

5455 Kirkwood Blvd. SW
Cedar Rapids, IA 52404

Directions

Take US 30 to Kirkwood Blvd. exit. Go South on Kirkwood Blvd. The DOT is on the East side of the street. Conference room is in the south building. Lab is in the north building. Parking is South of the south building.

Contact Information

Telephone: 319-364-0235

Contact Person: Tammy Siebert
E-mail: tammy.siebert@iowadot.us

Hotels

AmericInn Cedar Rapids, North	319-393-8800
Baymont By Wyndham	319-362-6002
Best Western Plus Longbranch	800-443-7660
Country Inn & Suites, Airport	319-363-3789
Hampton Inn & Suites	319-832-1130
MainStay Suites - Marion	877-424-6423
Super 8 By Wyndham	319-363-1755
Quality Inn South	877-424-6423

