

33<sup>rd</sup> meeting of the  
**IOWA FREIGHT ADVISORY COUNCIL**

June 25, 2021  
10:00 AM to 11:00 AM  
Online - Microsoft Teams

**Meeting input objectives**

1. Provide input and recommendations of multimodal freight bottlenecks to be addressed in the state freight plan update.
2. Discuss growing momentum for commodity movement on the Missouri River and opportunities for this underutilized navigable waterway to further complement the multimodal freight network.

<b>10:00 AM</b>	<b>Welcome &amp; Roll Call</b>	<b>Mike Steenhoek, Chair Soy Transportation Coalition</b>
<b>10:10 AM</b>	<b>Iowa DOT Update</b> Overview of the DOT's perspective on the Federal infrastructure bill, summary of the State legislative session, and other agency updates.	<b>Stu Anderson Iowa DOT</b>
<b>10:25 AM</b>	<b>State Freight Plan: Multimodal Freight Bottlenecks</b> Presentation of the multimodal freight bottlenecks identified by Iowa DOT, followed by an input exercise where members will be asked to provide feedback on these air, highway, rail, and waterway locations.	<b>Garrett Pedersen &amp; Justin Meade Iowa DOT</b>
<b>10:35 AM</b>	<b>Missouri River Navigation</b> Discussion of recent and ongoing initiatives related to growing commodity traffic on the Missouri River, including updates on the New Cooperative Barge Facility at Blencoe and the Soy Transportation Coalition Missouri River Navigation Study.	<b>Craig Markley Iowa DOT</b>
<b>10:55 AM</b>	<b>Future Meetings Discussion</b> Discuss member preferences to return to in-person meetings.	<b>Mike Steenhoek, Chair Soy Transportation Coalition</b>
<b>11:00 AM</b>	<b>Adjourn</b>	

**Future meetings:**

- Friday, September 10<sup>th</sup>
- Friday, December 10<sup>th</sup>

33<sup>rd</sup> meeting of the  
**IOWA FREIGHT ADVISORY COUNCIL**

June 25, 2021  
 10:00 AM to 11:00 AM  
 Online - Microsoft Teams

**Members**

	Tom Determann, Clinton Regional Development		Joe Parsons, Iowa Interstate Railroad
	Greg Dickinson, Ten D/Merchants Distribution	x	Amy Homan for Dan Sabin, Iowa Northern Rail.
x	Don Egli, Iowa Motor Truck Association		Jody Sandy, Hy-Vee
	Calean Kokjohn, Cryotech	x	Mike Steenhoek, Soy Transportation Coalition
	Ron Lang	x	Reilly Vaughan, Agribusiness Assoc. of Iowa
x	Don McDowell, Iowa Farm Bureau	x	Jillian Walsh, Traverro
x	Delia Moon-Meier, Iowa 80 Group	x	Ron White, Artco Fleeting Service
x	James Niffenegger, Landus Cooperative	x	Tim Woods, Woods Development
x	Kelli O'Brien, Union Pacific Railroad		

**Ex-Officio Members**

x	Todd Ashby, Des Moines Area MPO		Mike Norris, Southeast Iowa RPC
	Mike Hadley, Keokuk County	x	Paul Ovrom, IDALS
x	Michael Kober, Iowa Dept. of Public Safety	x	Joseph Rude, Iowa Economic Dev. Authority
x	Johnnie Gibson for Sean Litteral, FHWA Iowa Div.		Col. Steven Sattinger, USACE Rock Island District
	Scott Marler, Iowa DOT		Louis Vander Streek, Iowa Utilities Board
x	Tim Marshall, FHWA Iowa Division	x	Jennifer Wright, Iowa DNR
x	Shirley McGuire, FMCSA		

**Iowa DOT**

x	Stu Anderson		David Miller
x	Zac Bitting	x	Tammy Nicholson
	Mikel Derby	x	Garrett Pedersen
	Brenda Freshour-Johnston		Charlie Purcell
	Sam Hiscocks	x	Ryan Ridout
x	Laura Hutzell		Angel Robinson
	Troy Jerman		Melissa Spiegel
	David Lorenzen		Jeff von Brown
x	Craig Markley	x	Susan Wallace
x	Amanda Martin	x	Andrea White
x	Justin Meade		Lee Wilkinson

**Guests**


### **Meeting input objectives**

1. Provide input and recommendations of multimodal freight bottlenecks to be addressed in the state freight plan update.
2. Discuss growing momentum for commodity movement on the Missouri River and opportunities for this underutilized navigable waterway to further complement the multimodal freight network.

#### **10:00 AM Welcome & Roll Call**

**Mike Steenhoek, Chair  
Soy Transportation  
Coalition**

Chair Mike Steenhoek opened the meeting by thanking the group members for attending the virtual meeting of the Freight Advisory Council and stressed the importance of continued engagement. Mr. Steenhoek then made announcements related to meeting logistics and completed roll call before moving to the first presentation.

#### **10:10 AM Iowa DOT Update**

Overview of the DOT's perspective on the Federal infrastructure bill, summary of the State legislative session, and other agency updates.

**Stu Anderson  
Iowa DOT**

Stu Anderson provided an update from Iowa DOT, including COVID-19 impacts, funding overviews, and the status of the five-year program. The Iowa Moody index score is now 98 percent of the pre-COVID level while the national average is 93 percent. Rail numbers and passenger enplanements continue to improve. Several funding items were covered, including:

- The 2022-2026 Highway Program was approved earlier this month. This is a \$3.6 billion program that increases funding for pavement maintenance, rehab, and safety.
- The 2021 Road Use Tax Fund Study update is being developed. This will discuss roadway and bridge needs, revenue, and possible shortfalls for the state roadway network and make recommendations for action.
- The next federal infrastructure bill is still being developed. A framework was agreed on, but everything is still subject to change.
- Modal appropriations at the state-level were funded at the same level as FY2020.

Mr. Anderson also provided an update on Iowa DOT reorganization, as several bureaus were combined to form the new Modal Transportation Bureau.

#### **10:25 AM State Freight Plan: Multimodal Freight Bottlenecks**

Presentation of the multimodal freight bottlenecks identified by Iowa DOT, followed by an input exercise where members will be asked to provide feedback on these air, highway, rail, and waterway locations.

**Garrett Pedersen &  
Justin Meade  
Iowa DOT**

Garrett Pedersen and Justin Meade provided an update on the State Freight Plan and introduced an upcoming exercise that will be used to gather input on freight bottlenecks from the FAC members. Mr. Pedersen

reviewed the state freight plan timeline and provided an overview of identification methodology for multimodal freight bottlenecks. To summarize:

- The Iowa DOT Aviation Team, Des Moines International Airport, and Eastern Iowa Airport were consulted with and it was ultimately determined that no air cargo bottlenecks exist in the state.
- INRIX traffic data and Iowa DOT traffic count data were utilized to identify 24 bottleneck locations experiencing regular traffic slow-downs and heavy truck traffic.
- Railroad companies operating in Iowa were surveyed multiple times and provided a total of 38 rail chokepoints across the system.
- The U.S. Army Corps of Engineers provided updated information on the Mississippi River locks. It was ultimately determined to identify each of the locks and swing-span bridges bordering Iowa as bottlenecks.

Mr. Meade then demoed an interactive online map that allows FAC members to provide input on draft locations, as well as add any missing locations. An email will be sent with a link to access and provide feedback.

**10:35 AM Missouri River Navigation**

Discussion of recent and ongoing initiatives related to growing commodity traffic on the Missouri River, including updates on the New Cooperative Barge Facility at Blencoe and the Soy Transportation Coalition Missouri River Navigation Study.

**Craig Markley  
Iowa DOT**

Craig Markley gave an overview of the recent ribbon-cutting for the Port of Blencoe, a New Cooperative barge facility on the Missouri River. The facility includes a storage building that can hold 20,000 tons, a semi unloading area, mobile conveyor system for loading and unloading, and will include commodity buildings in the future. There is a great deal of interest in utilizing this new facility that is situated roughly halfway between Sioux City and Council Bluffs.

Mike Steenhoek provided an overview of the Soy Transportation Coalition Missouri River Navigation Study that will be released soon. This study will highlight the Missouri River as an underutilized asset, as the reputation of the river overshadows its potential. The report highlights the performance of the river, what investments would make it more reliable and predictable, and investigates how agriculture and other industries would benefit if investments are made.

**10:55 AM Future Meetings Discussion**

Discuss member preferences to return to in-person meetings.

**Mike Steenhoek, Chair  
Soy Transportation  
Coalition**

The next FAC meetings are scheduled for September 10 and December 10. FAC Chair Mike Steenhoek and Iowa DOT staff will be discussing whether to return to in-person meetings or continue to meet virtually.

**11:00 AM Adjourn**

**Future meetings:**

- Friday, September 10<sup>th</sup>
- Friday, December 10<sup>th</sup>



**Iowa DOT Update**  
Iowa Freight Advisory Council  
June 25, 2021

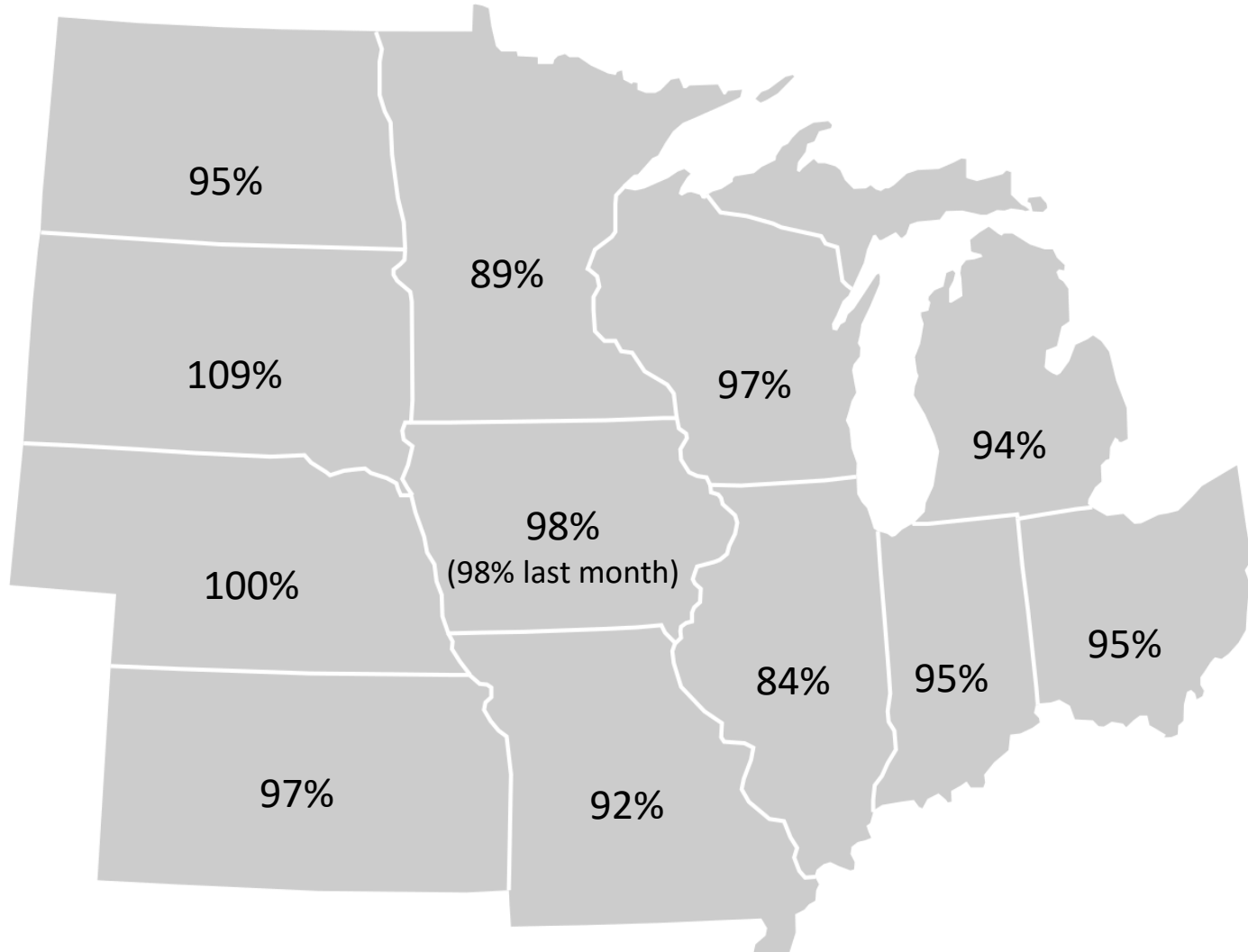


# Overview

- **COVID-19 Impacts**
  - Economy
  - Travel
  - Funding
- **2022-2026 Highway Program**
- **2021 Funding Discussions**
- **State modal appropriations**
- **DOT Organization**

# Moody's/CNN Recovery Index - Midwest

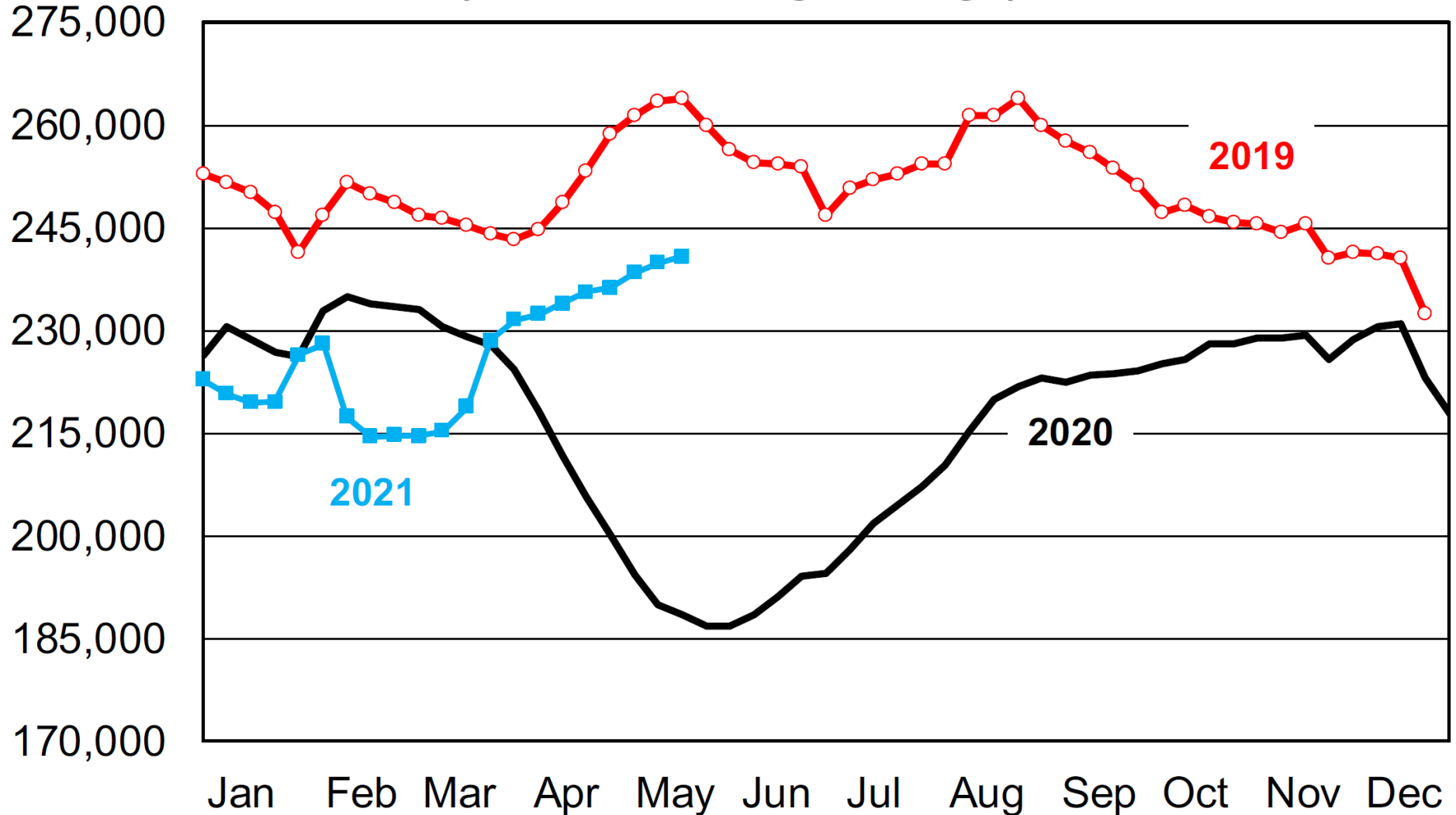
(Pre-Pandemic = 100) As of 6/18/2021



Nation is at 93% (91% last month)



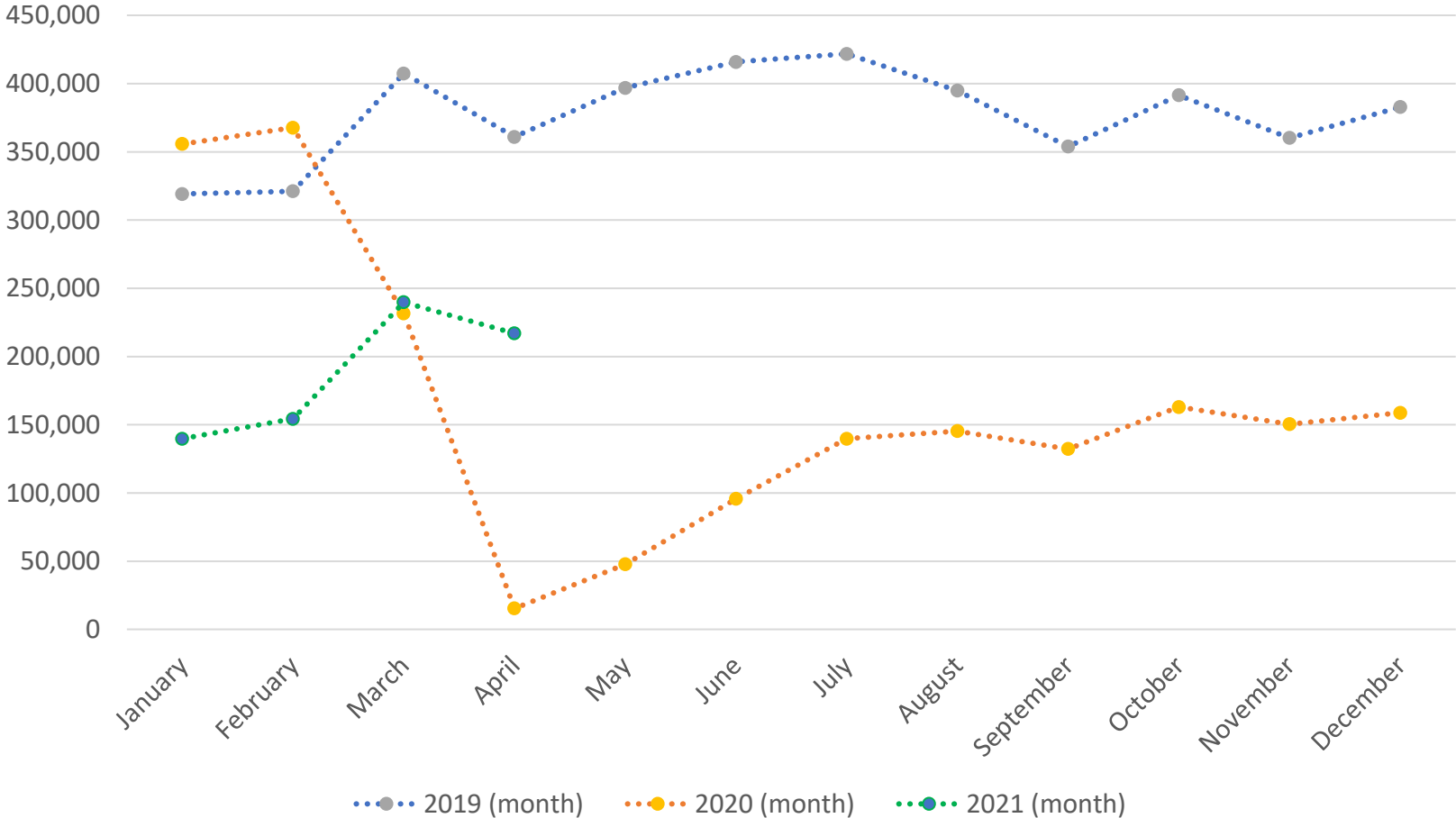
# Total U.S. Rail Carloads (6-week moving average)



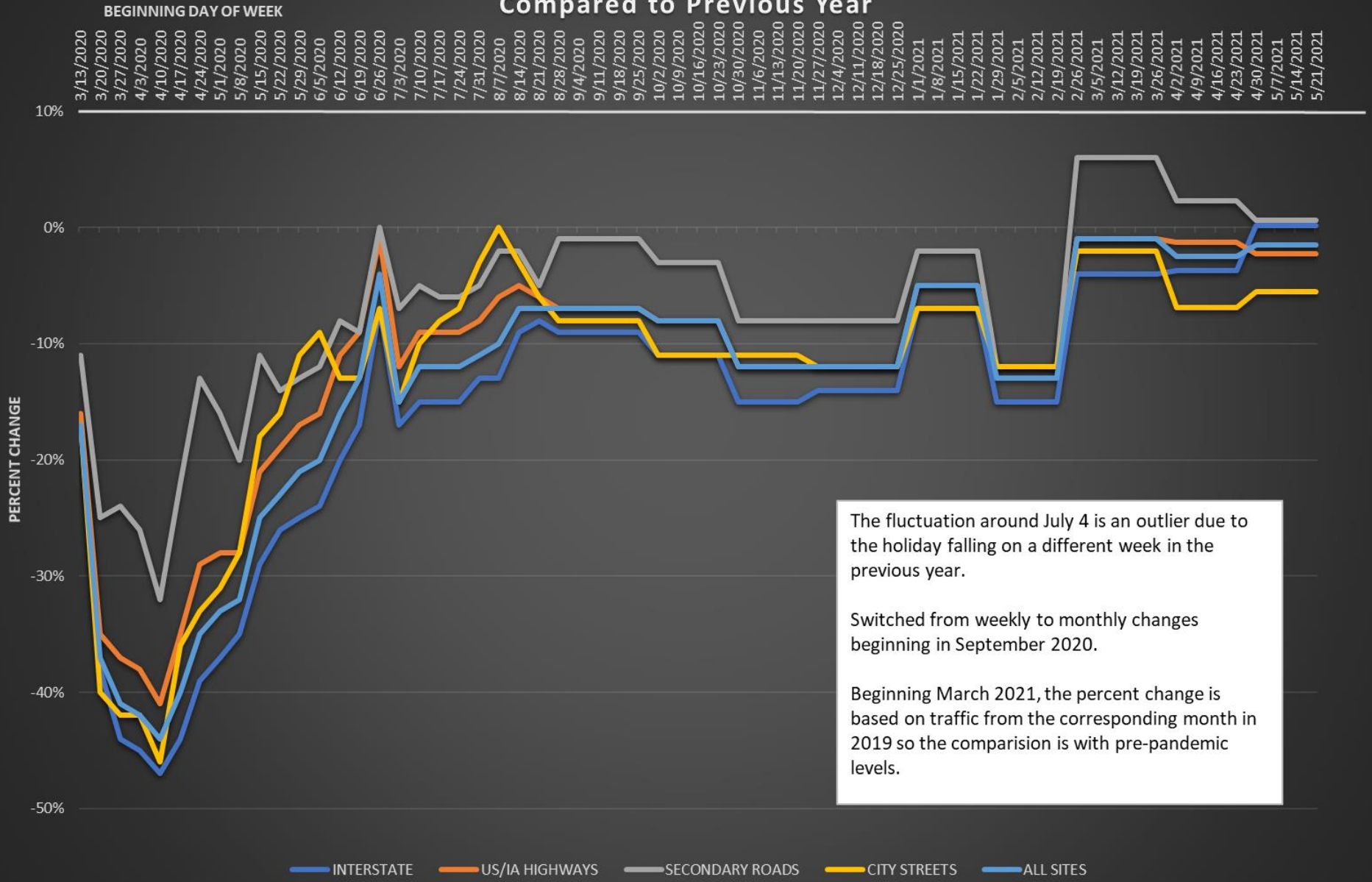
Data are 6-week moving average originations, do not include intermodal, and do not include the U.S. operations of CN, CP, and GMXT. Source: AAR *Rail Time Indicators*

# Monthly Passenger Counts at Iowa's Eight Commercial Service Airports

(through April 2021)



# Percentage Change in Traffic Compared to Previous Year



The fluctuation around July 4 is an outlier due to the holiday falling on a different week in the previous year.

Switched from weekly to monthly changes beginning in September 2020.

Beginning March 2021, the percent change is based on traffic from the corresponding month in 2019 so the comparison is with pre-pandemic levels.

# Transportation Funding Impacts – COVID

---

## HIGHWAY

- Fuel tax receipts are down due to travel impacts
- Vehicle registration revenue is steady to growing (despite early drop in vehicle sales)
- Estimated lost RUTF through June 2021  
**- \$50M**

## TRANSIT

- Initial drop in State Transit Assistance revenue but that has rebounded
- FY 2021 state vertical infrastructure appropriation lower due to reduced RIF revenue
- Dramatic drop in local revenue due to reduced ridership

## AVIATION

- State aviation fund revenue down about **40 percent** due to lower aviation fuel tax
- FY 2021 state vertical infrastructure appropriation lower due to reduced RIF revenue
- Dramatic drop in local revenue due to reduced passengers

## TRAILS

- FY 2021 state vertical infrastructure appropriations lower due to reduced RIF revenue

# Federal Support – COVID

---

## FEDERAL APPROPRIATIONS

**CARES Act** - March 2020  
Coronavirus Aid, Relief, and  
Economic Security Act

**CRRSAA** - Dec. 2020  
Coronavirus Response and  
Relief Supplemental  
Appropriations Act of 2021

**ARP** - March 2021  
American Rescue Plan Act of  
2021

## HIGHWAYS/BRIDGES IN IOWA

- CARES Act: None
- CRRSAA: \$121.9 million
- ARP Act: No dedicated funding

## TRANSIT AGENCIES IN IOWA

- CARES Act: \$107 million
- CRRSAA: \$26.5 million
- ARP Act: \$61.1 million

## AIRPORTS IN IOWA

- CARES Act: \$70.5 million
- CRRSAA: \$13.4 million
- ARP Act: \$26.9 million

# 2022-2026 Highway Program

- **\$3.6 billion of state/highway funding**
- **Challenges**
  - Large negative balances in early years
  - Federal funding uncertainty
- **Key Points**
  - Some projects were delayed but none removed
  - Provided for annual increases in pavement contract maintenance.
  - Increased safety target with continued annual increases
  - Added \$30 million of pavement rehab to FY 2022
  - Added initial phase of I-380 expansion north of 80/380 mixmaster

# 2021 Funding Discussions

- **2021 RUTF Study**
  - Assess needs, funding, and funding shortfall
  - Make recommendations
  - Due to legislature by end of CY 2021
- **Federal funding**
  - Infrastructure bill
  - Reauthorization
    - Current authorization bill expires Sept. 30, 2021
    - Both House and Senate are working on bills
    - Earmarks

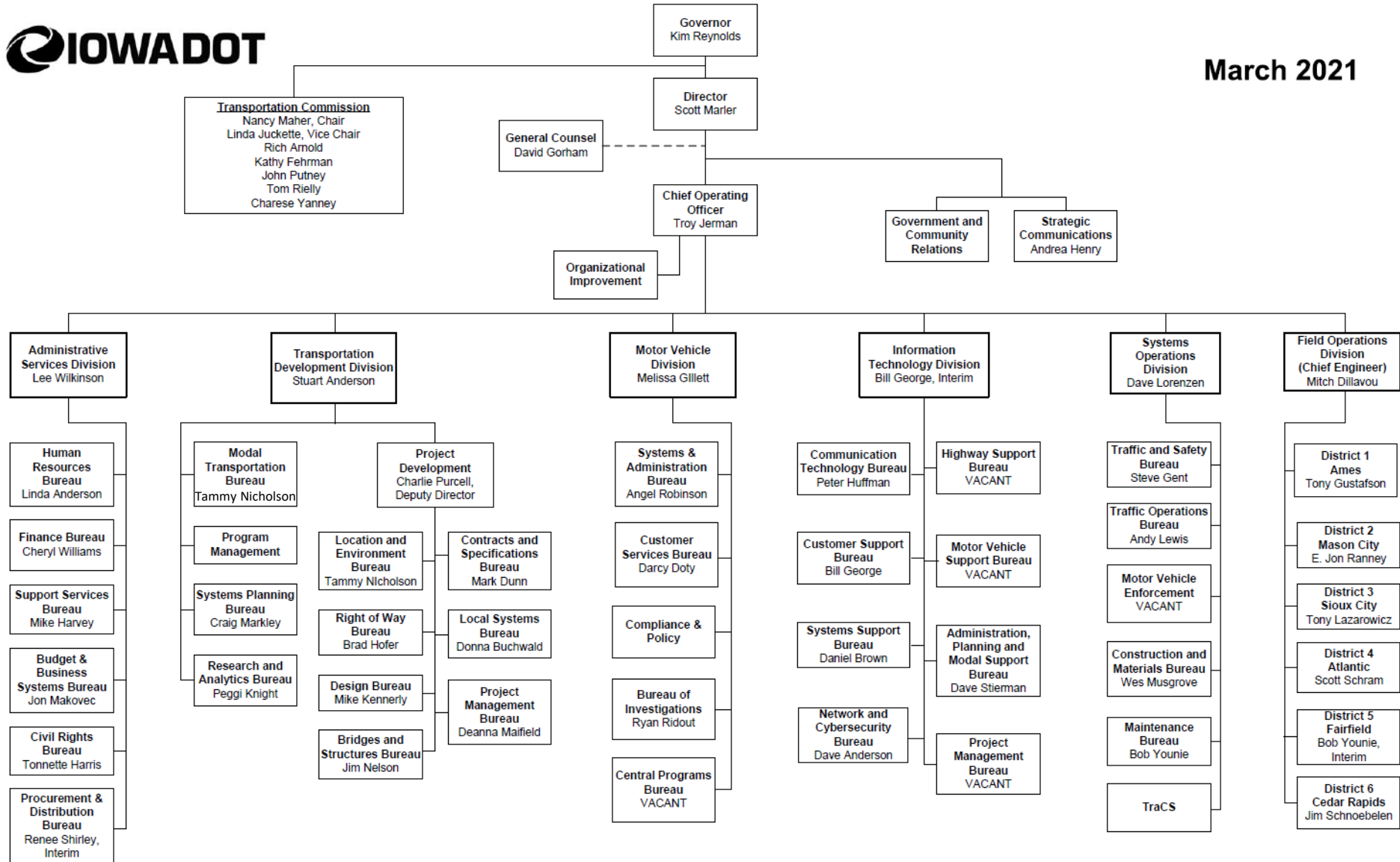
## Modal Appropriations from Rebuild Iowa's Infrastructure Fund (RIIF)

(\$ 000 omitted)

Program	FY 2020 Appropriation	FY 2021 Appropriation	FY 2022/23 DOT Request	Final FY 2022 Appropriation
Commercial Service Vertical Infrastructure	\$1,900	\$1,000	\$1,900	\$1,900
General Aviation Vertical Infrastructure	\$1,000	\$650	\$1,000	\$1,000
State Recreational Trails	\$1,500	\$1,000	\$2,500	\$1,500
Public Transit Infrastructure	\$1,500	\$500	\$1,500	\$1,500
Railroad Revolving Loan and Grant Program	\$1,000	\$500	\$2,000	\$1,000
<b>Total</b>	<b>\$6,900</b>	<b>\$3,650</b>	<b>\$8,900</b>	<b>\$6,900</b>



March 2021



**Questions?**

**Stu Anderson**

**[stuart.anderson@iowadot.us](mailto:stuart.anderson@iowadot.us)**

**515-239-1661**

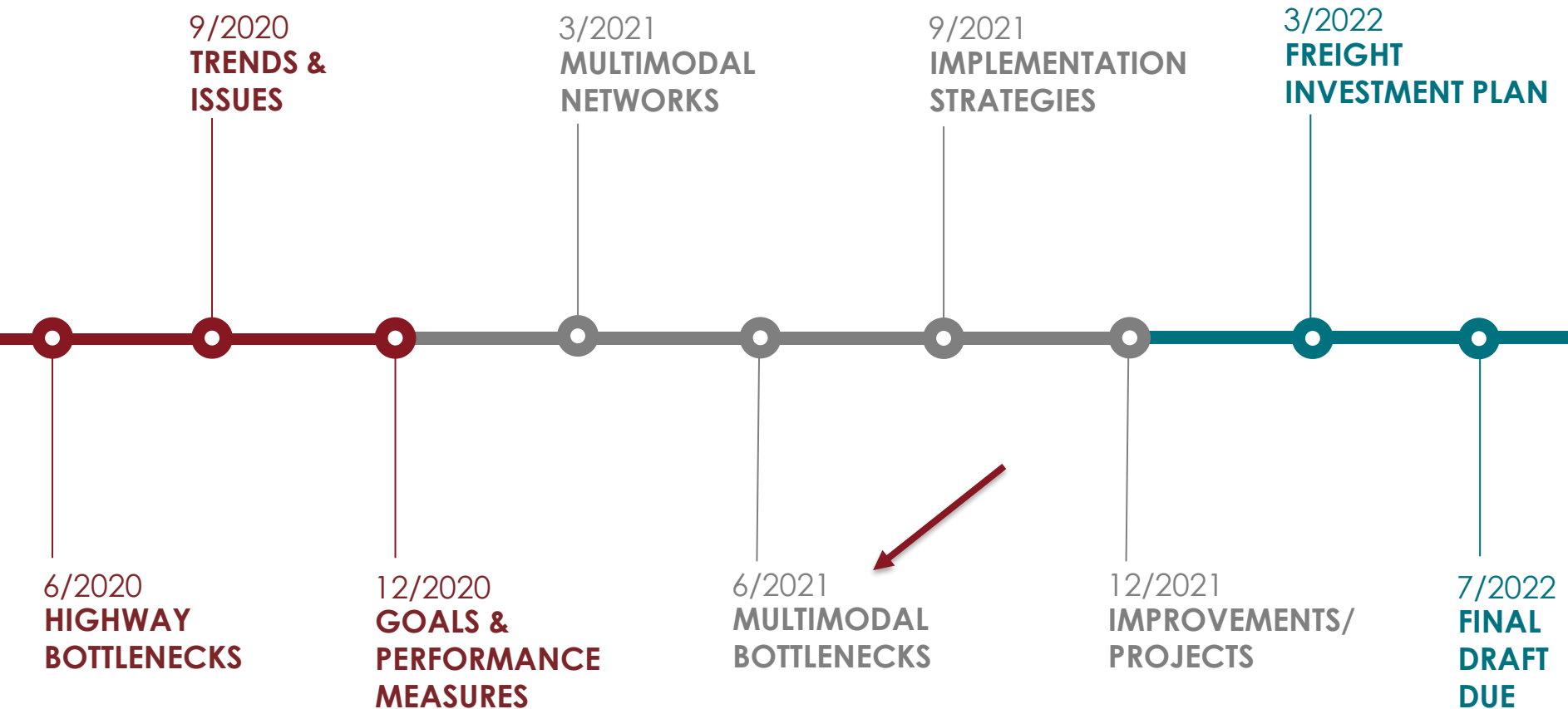


# State Freight Plan **Freight Bottlenecks**

Iowa Freight Advisory Council | June 25, 2021



# State Freight Plan - Input opportunities



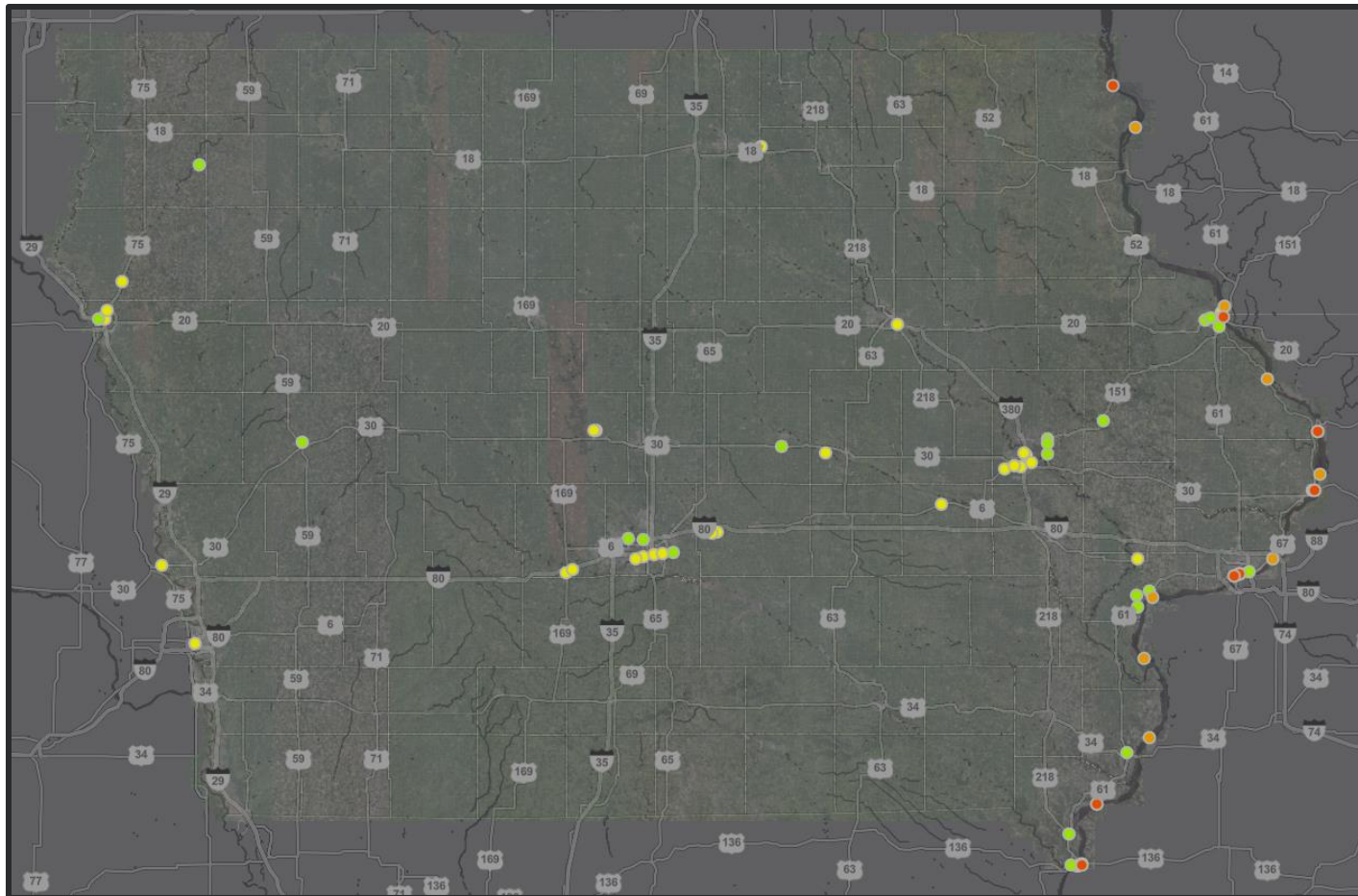
# Multimodal freight bottlenecks

- Objective
  - Identify freight bottleneck locations to mitigate for improved freight mobility
- Identification and prioritization
  - Air
  - Highway
  - Railroad
  - Inland waterway
- Input exercise and next steps

# Methodology

MODE	SOURCE(S)	PROCESS	RESULTS
<b>Air</b>	Iowa DOT Aviation Team, Des Moines International Airport, and Eastern Iowa Airport	Survey to identify any freight mobility issues at major cargo airports.	N/A
<b>Highway</b>	INRIX traffic data and Iowa DOT truck traffic counts	Analysis of locations with recurring slow-downs and heavy truck traffic.	24 locations
<b>Railroad</b>	Iowa rail companies	Multiple surveys to identify choke points.	38 locations
<b>Waterway</b>	U.S. Army Corps of Engineers	Analysis of age, average delay, and unavailability of locks and swing-span bridges.	19 locations

# Multimodal bottleneck locations



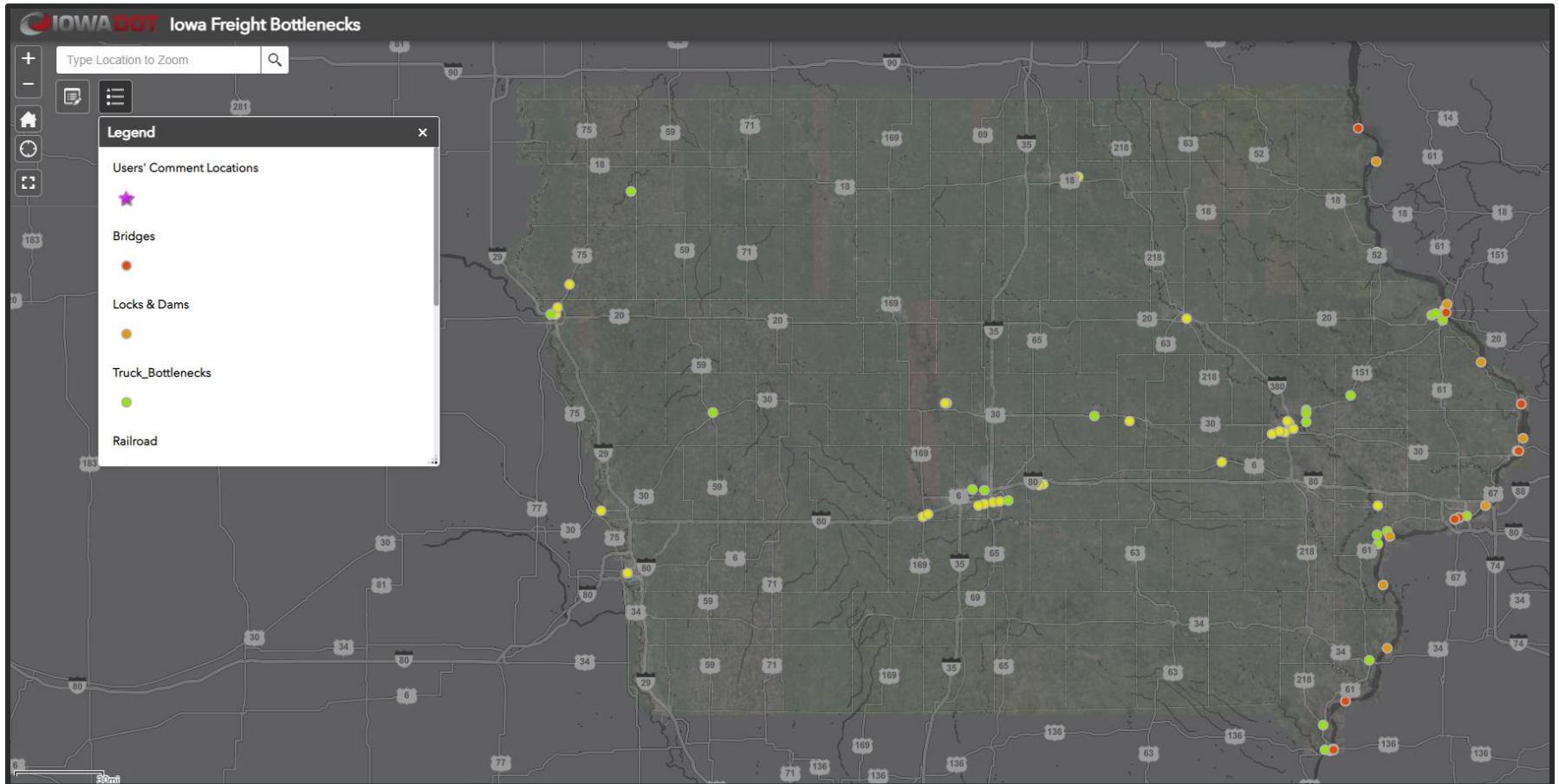
## Input exercise

- Members will be sent a link to an online map with multimodal bottleneck locations and descriptions
- Click on specific location to leave comments, additions, etc.
- Link and directions will be sent via email on June 28, 2021.

***\*Please forward on to others in your industry\****



## FREIGHT BOTTLENECKS



<https://iowadot.maps.arcgis.com/apps/webappviewer/index.html?id=7c5450529cfe49bf9d037e0d11d6e32d>





THANK YOU FOR YOUR TIME AND ATTENTION



**Garrett Pedersen**

Planning Team Leader  
515-239-1520  
garrett.pedersen@iowadot.us

**Justin Meade**

Freight Transportation Planner  
515-233-7767  
justin.meade@iowadot.us

# Missouri River Navigation Update

Craig Markley

Iowa Dept. of Transportation



## POINTS of INTEREST

- A** Semi unloading area
- B** Mobile conveyor system for loading and unloading
- C** Future site of commodity building
- D** Site of office and scale

