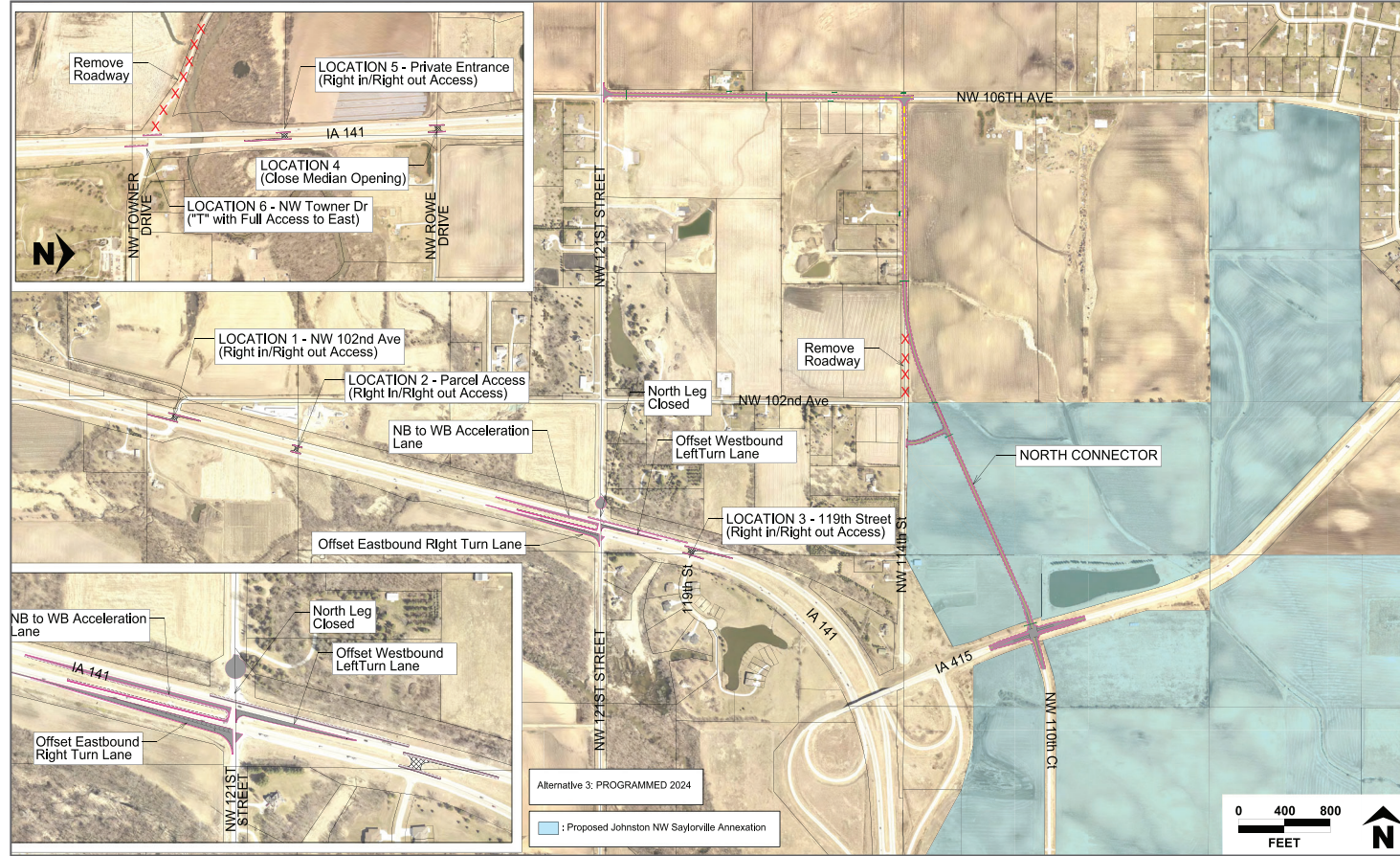




**PREFERRED ALTERNATIVE 3**  
NORTH CONNECTOR AND CLOSURE OF NW 121<sup>ST</sup> STREET NORTH LEG



PROS
Provides good local access to area south of IA 141.
Supports development of future residential areas adjacent to North Connector.
Improved safety with other median closures.
Improved safety with closure of west leg of NW Towner Drive intersection at IA 141.
Maximizes safety for gaining access to/from IA 141 from/to local street network by utilizing the interchange.
Improved safety at IA 141/121 <sup>st</sup> Street intersection as compared to existing conditions or traffic signal.

CONS
Project will take longer to complete. (est. 5 years)
Potential traffic pattern impacts to residential areas along the North Connector Road and NW 106 <sup>th</sup> Ave."
Potential environmental and right-of-way impacts associated with this alternative.

**PROGRAMMED 2024: \$7,740,000**

FOR GRADING, PAVING, LIGHTING & SIGNS

**PREFERRED ALTERNATIVE C**  
ADDITIONAL THROUGH LANES IA 415 AT ALL WAY STOP



PROS
Reduces delays compared to existing all-way STOP. (Avg PM Peak delay EB improves from LOS F to LOS C)
Minimal to no right-of-way impacts.
Lower cost alternative.
Minimal disruption to traffic during construction.

CONS
Interim solution does not support volume growth for design year 2050

**PROGRAMMED 2020: \$400,000**

FOR GRADING & PAVING