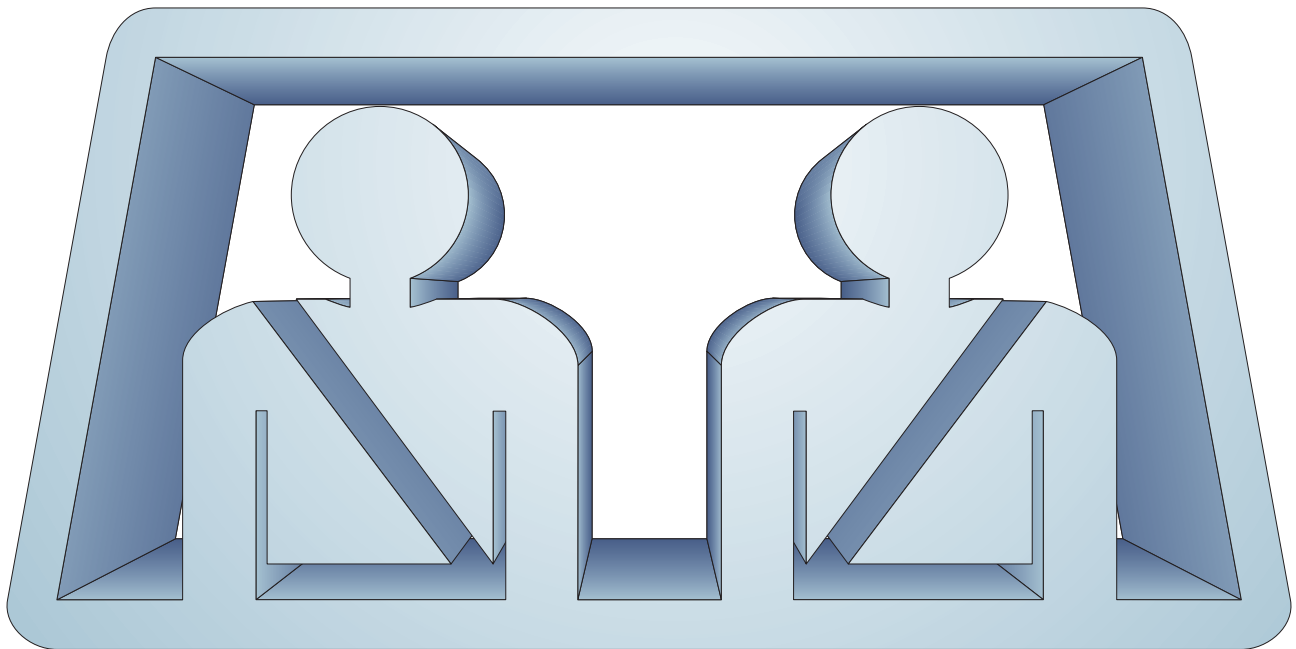


2009

Seat Belt

Usage Survey



**Site surveys conducted by officers of the
Iowa State Patrol, Department of Public Safety**

**Statistics compiled and survey written by the
Office of Driver Services, Iowa Department of Transportation**

2009 Seat Belt Usage Survey

List of Charts

1. Seat Belt Usage Survey—Summary	2
2. Restraint Usage by Year and Road System	2
3. Usage Percent by Year—All Road Systems.....	3
4. Usage Percent by Year—Municipal Road System.....	3
5. Usage Percent by Year—Primary Road System	4
6. Usage Percent by Year—Secondary Road System	4
7. Usage Percent by Year—Interstate System.....	5
8. April Survey by Road System	6
9. July Survey by Road System	6
10. April/July Change.....	6
11. Usage by Road Systems and Population	7
12. Usage by Population and Road System	7
13. Usage by Area of State and Road System	7
14. Usage by Day of Week and Road System	8
15. Usage by Time of Day and Road System.....	8
16. Site Selection by County	9
17. Site Selection by Area of State	10
18. Site Selection by Population Category	10
19. Statewide Vehicle Miles of Travel	10
20. April Seat Belt Survey Sites	11
21. July Seat Belt Survey Sites.....	12

2009 Seat Belt Usage Survey

Chart 1

2009 Seat Belt Usage Survey--Summary

Road System	April Usage			July Usage			Change
	Observed	Used	Percentage	Observed	Used	Percentage	
Statewide Total	12,474	11,485	92.53%	11,907	11,010	93.07%	0.55%
Municipal	4,962	4,534	91.37%	5,161	4,701	91.09%	-0.29%
Primary	4,921	4,522	91.89%	4,324	4,034	93.29%	1.40%
Secondary	1,303	1,226	94.09%	1,109	1,043	94.05%	-0.04%
Interstate	1,288	1,203	93.40%	1,313	1,232	93.83%	0.43%

Estimated statewide total April survey usage weighted by vehicles miles of travel and 95% confidence intervals for the estimated variance are +/- 0.15%

Estimated statewide total July survey usage weighted by vehicles miles of travel and 95% confidence intervals for the estimated variance are +/- 0.15%

Chart 2

Restraint Usage by Year and Road System

Survey	Statewide	Municipal	Primary	Secondary	Interstate
06/86	27%	20%	27%	24%	43%
09/86	46%	34%	48%	42%	62%
04/87	63%	54%	65%	64%	69%
09/87	56%	48%	56%	55%	67%
09/88	55%	46%	55%	52%	69%
09/89	59%	49%	56%	61%	72%
09/90	61%	49%	60%	61%	76%
09/91	68%	64%	64%	64%	79%
09/92	71%	62%	69%	71%	83%
09/93	73%	59%	73%	71%	80%
09/94	73%	63%	72%	72%	82%
09/95	75%	65%	75%	76%	85%
09/96	75%	69%	74%	71%	85%
11/97	75%	69%	74%	71%	85%
10/98	77%	70%	76%	79%	84%
10/99	78%	72%	78%	80%	84%
10/00	78%	73%	79%	77%	82%
10/01	81%	76%	83%	83%	81%
09/02	82%	79%	83%	87%	81%
03/03	82%	78%	86%	81%	82%
07/03	86%	82%	88%	83%	90%
04/04	84%	79%	84%	88%	84%
07/04	86%	84%	87%	86%	88%
04/05	85%	78%	87%	89%	85%
07/05	86%	81%	86%	87%	88%
04/06	89%	87%	89%	90%	90%
07/06	89%	84%	89%	90%	92%
07/07	92%	91%	92%	92%	94%

2009 Seat Belt Usage Survey

Chart 3
Seat Belt Usage Percent by Year—All Road Systems

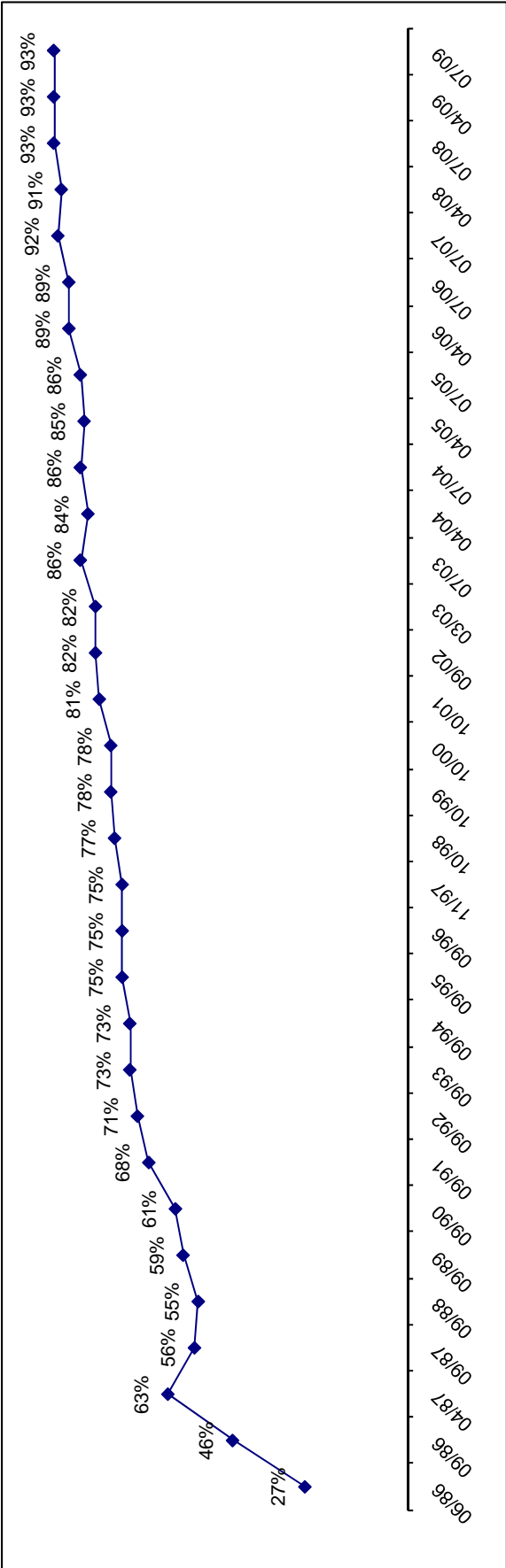
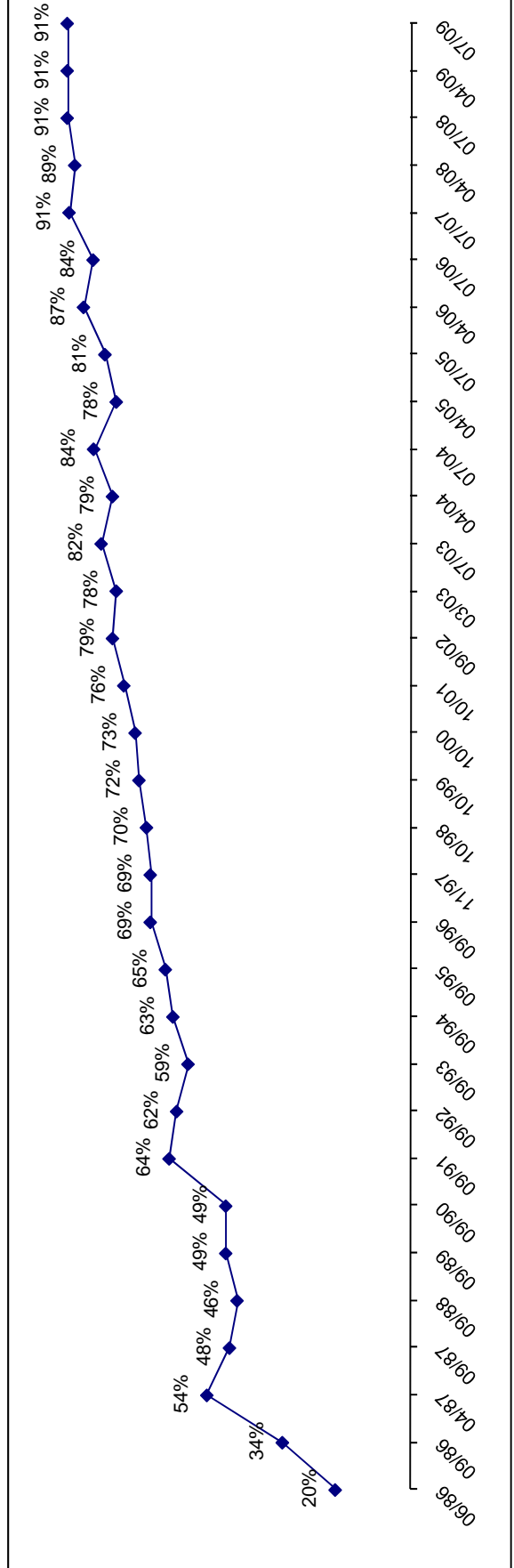


Chart 4
Seat Belt Usage Percent by Year—Municipal Road System



2009 Seat Belt Usage Survey

Chart 5
Seat Belt Usage Percent by Year—Primary Road System

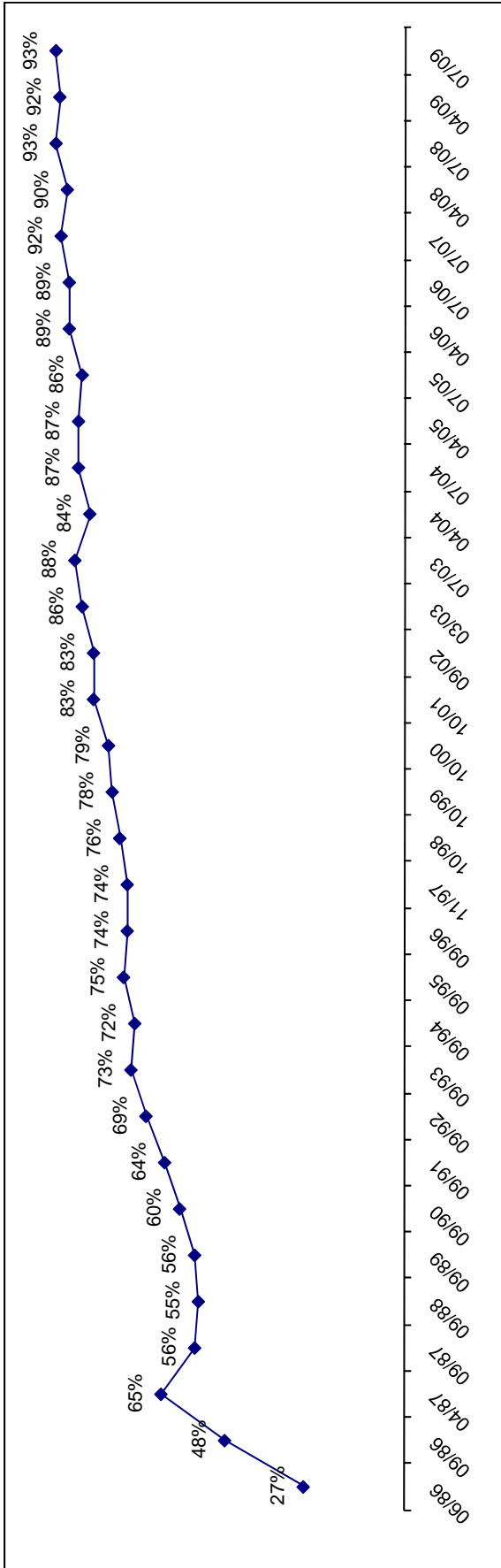
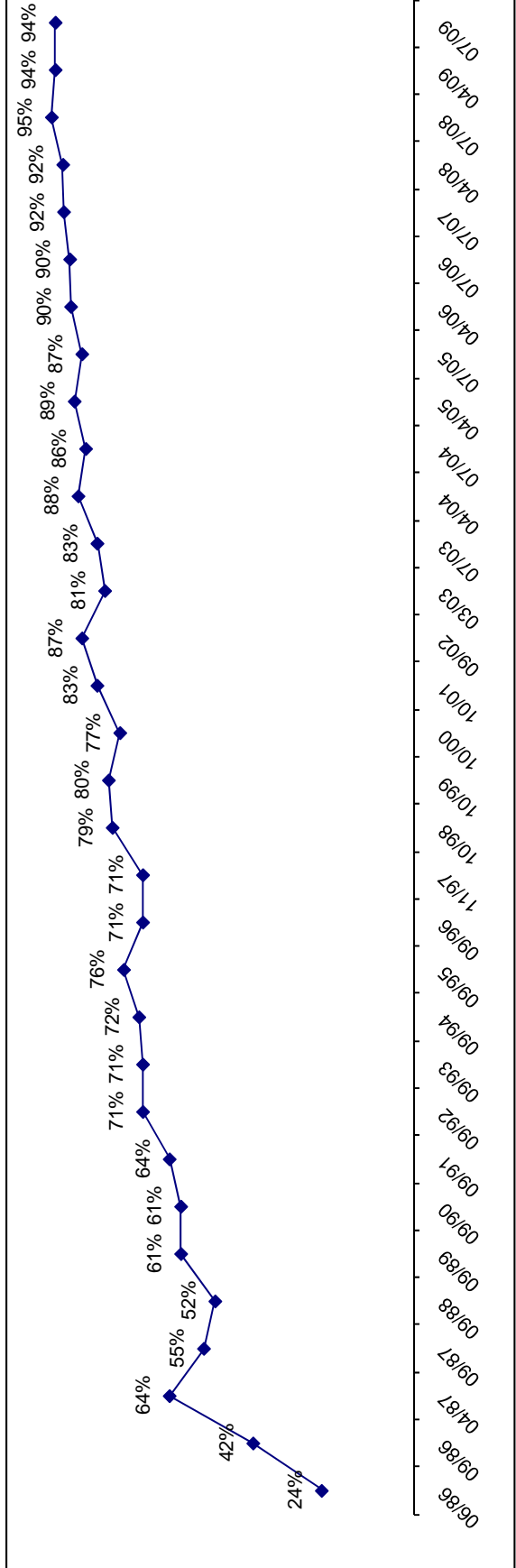
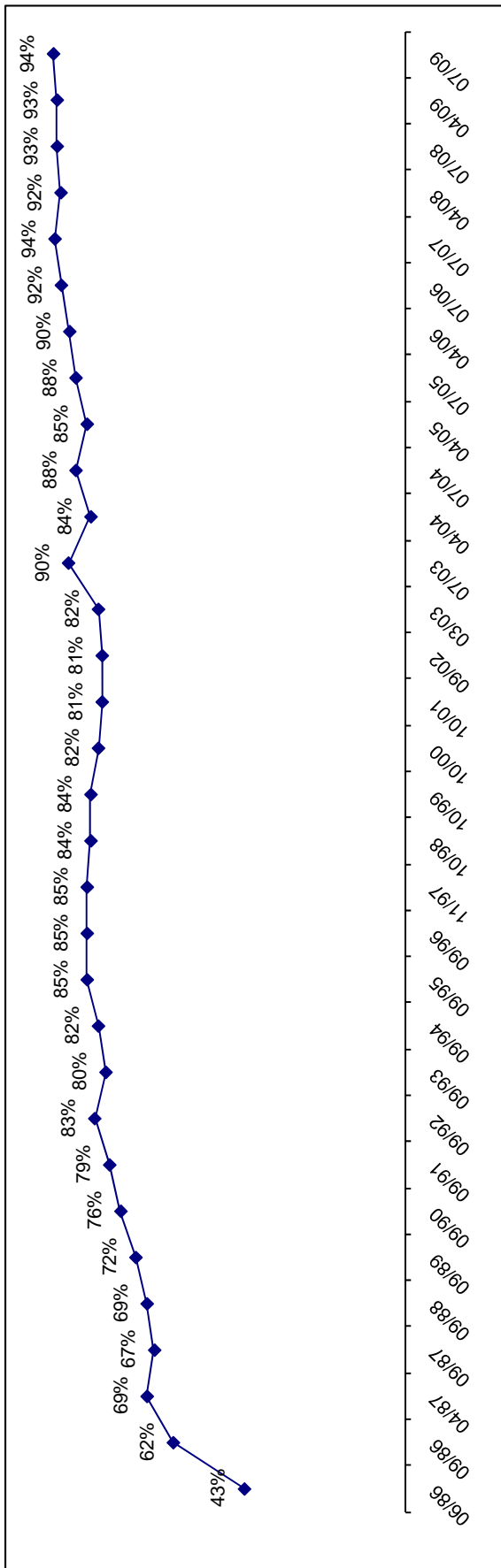


Chart 6
Seat Belt Usage Percent by Year—Secondary Road System



2009 Seat Belt Usage Survey

Chart 7
Seat Belt Usage Percent by Year—Interstate Highway System



2009 Seat Belt Usage Survey

Chart 8
April Survey by Road System

Road System	Drivers						
	Belt		None		Unknown		Total
	#	%	#	%	#	%	#
Municipal	3,564	88.6%	329	8.2%	131	3.3%	4,024
Primary	3,585	89.3%	300	7.5%	129	3.2%	4,014
Secondary	972	92.0%	51	4.8%	34	3.2%	1,057
Interstate	892	87.9%	59	5.8%	64	6.3%	1,015
Total	9,013	89.1%	739	7.3%	358	3.5%	10,110
	Passengers						
Municipal	970	88.9%	99	9.1%	22	2.0%	1,091
Primary	937	86.3%	99	9.1%	50	4.6%	1,086
Secondary	254	87.3%	26	8.9%	11	3.8%	291
Interstate	311	89.6%	26	7.5%	10	2.9%	347
Total	2,472	87.8%	250	8.9%	93	3.3%	2,815
	Total						
Municipal	4,534	88.6%	428	8.4%	153	3.0%	5,115
Primary	4,522	88.7%	399	7.8%	179	3.5%	5,100
Secondary	1,226	90.9%	77	5.7%	45	3.3%	1,348
Interstate	1,203	88.3%	85	6.2%	74	5.4%	1,362
Total	11,485	88.9%	989	7.7%	451	3.5%	12,925

Chart 9
July Survey by Road System

Road System	Drivers						
	Belt		None		Unknown		Total
	#	%	#	%	#	%	#
Municipal	3,665	90.3%	333	8.2%	60	1.5%	4,058
Primary	3,101	91.3%	219	6.4%	77	2.3%	3,397
Secondary	781	92.2%	47	5.5%	19	2.2%	847
Interstate	918	91.3%	55	5.5%	33	3.3%	1,006
Total	8,465	90.9%	654	7.0%	189	2.0%	9,308
	Passengers						
Municipal	1,036	85.9%	127	10.5%	43	3.6%	1,206
Primary	933	90.6%	71	6.9%	26	2.5%	1,030
Secondary	262	91.3%	19	6.6%	6	2.1%	287
Interstate	314	89.7%	26	7.4%	10	2.9%	350
Total	2,545	88.6%	243	8.5%	85	3.0%	2,873
	Total						
Municipal	4,701	89.3%	460	8.7%	103	2.0%	5,264
Primary	4,034	91.1%	290	6.6%	103	2.3%	4,427
Secondary	1,043	92.0%	66	5.8%	25	2.2%	1,134
Interstate	1,232	90.9%	81	6.0%	43	3.2%	1,356
Total	11,010	90.4%	897	7.4%	274	2.2%	12,181

Chart 10
April/July Change

Road System	Drivers						
	Belt		None		Unknown		Total
	#	%	#	%	#	%	#
Municipal	101	1.7%	4	0.0%	-71	-1.8%	34
Primary	-484	2.0%	-81	-1.0%	-52	-0.9%	-617
Secondary	-191	0.2%	-4	0.7%	-15	-1.0%	-210
Interstate	26	3.4%	-4	-0.3%	-31	-3.0%	-9
Total	-548	1.8%	-85	-0.3%	-169	-1.5%	-802
	Passengers						
Municipal	66	-3.0%	28	1.5%	21	1.5%	115
Primary	-4	4.3%	-28	-2.2%	-24	-2.1%	-56
Secondary	8	4.0%	-7	-2.3%	-5	-1.7%	-4
Interstate	3	0.1%	0	-0.1%	0	0.0%	3
Total	73	0.8%	-7	-0.4%	-8	-0.3%	58
	Total						
Municipal	167	0.7%	32	0.4%	-50	-1.0%	149
Primary	-488	2.5%	-109	-1.3%	-76	-1.2%	-673
Secondary	-183	1.0%	-11	0.1%	-20	-1.1%	-214
Interstate	29	2.5%	-4	-0.3%	-31	-2.3%	-6
Total	-475	1.5%	-92	-0.3%	-177	-1.2%	-744

2009 Seat Belt Usage Survey

Chart 11

Seat Belt Usage by Road System and Population

Population and Road System	Usage			
	April		July	
A Over 200,000	1,852	89.00%	1,888	91.69%
Municipal	667	87.65%	764	91.28%
Primary	541	87.26%	545	93.32%
Secondary	75	96.15%	36	97.30%
Interstate	569	91.48%	543	90.35%
B 150,000 TO 199,999	3,489	94.04%	2,921	95.96%
Municipal	1,370	92.51%	1,085	95.09%
Primary	1,026	94.56%	1,075	95.56%
Secondary	440	94.83%	303	96.81%
Interstate	653	96.03%	458	98.49%
C 75,000 TO 149,999	1,332	92.56%	1,517	93.24%
Municipal	532	89.71%	564	93.84%
Primary	429	93.87%	535	91.30%
Secondary	49	98.00%	58	96.67%
Interstate	322	94.99%	360	94.74%
D 25,000 TO 74,999	1,981	91.67%	2,133	92.10%
Municipal	981	89.59%	922	89.78%
Primary	739	94.14%	872	94.89%
Secondary	221	93.64%	267	91.75%
Interstate	40	88.89%	72	91.14%
E Under 25,000	2,859	87.94%	3,100	90.62%
Municipal	1,262	86.50%	1,448	90.50%
Primary	1,258	87.79%	1,356	90.70%
Secondary	216	95.15%	201	89.33%
Interstate	123	93.18%	95	94.06%
Total	11,513	91.07%	11,559	92.72%
Municipal	4,812	89.29%	4,783	91.87%
Primary	3,993	91.16%	4,383	93.08%
Secondary	1,001	94.88%	865	93.41%
Interstate	1,707	93.89%	1,528	93.97%

Chart 12

Seat Belt Usage by Population and Road System

Population and Road System	Usage			
	April		July	
Municipal	4,514	139.45%	4,467	
Over 200,000	960	88.15%	974	87.99%
150,000 to 199,999	1,000	94.97%	1,057	93.71%
75,000 to 149,999	519	96.11%	526	92.93%
25,000 to 74,999	502	90.45%	478	91.75%
Under 25,000	1,533	90.44%	1,432	91.09%
Primary	4,518	91.85%	4,116	93.25%
Over 200,000	303	92.10%	270	95.07%
150,000 to 199,999	857	94.49%	858	94.70%
75,000 to 149,999	545	93.00%	582	91.65%
25,000 to 74,999	727	94.29%	851	95.62%
Under 25,000	2,086	89.68%	1,555	91.52%
Secondary	1,250	93.63%	1,195	92.92%
Over 200,000	118	83.69%	344	90.77%
150,000 to 199,999	361	93.04%	375	96.40%
75,000 to 149,999	102	100.00%	102	97.14%
25,000 to 74,999	163	90.06%	133	88.08%
Under 25,000	506	96.75%	241	91.98%
Interstate	1,203	93.40%	1,232	93.83%
Over 200,000	340	90.91%	333	91.99%
150,000 to 199,999	387	96.51%	341	97.43%
75,000 to 149,999	327	95.34%	369	94.86%
25,000 to 74,999	47	90.38%	57	93.44%
Under 25,000	102	86.44%	132	87.42%
Total	11,485	92.07%	11,010	92.47%
Over 200,000	1,721	89.03%	1,921	90.10%
150,000 to 199,999	2,605	94.76%	2,631	94.88%
75,000 to 149,999	1,493	95.04%	1,579	93.16%
25,000 to 74,999	1,439	92.30%	1,519	93.59%
Under 25,000	4,227	90.67%	3,360	91.21%

Chart 13

Seat Usage by Area of State and Road System

Area of State and Road System	Usage			
	April		July	
Northeast	2,470	92.86%	2,232	93.35%
Municipal	136	92.52%	157	97.52%
Primary	1,216	92.54%	1,132	92.26%
Secondary	151	92.07%	181	97.31%
Interstate	967	93.43%	762	93.27%
Northwest	3,486	90.26%	2,877	90.05%
Municipal	315	94.31%	296	93.97%
Primary	1,173	90.44%	486	85.26%
Secondary	654	83.21%	802	84.69%
Interstate	1,344	93.01%	1,293	94.86%
Southeast	2,378	93.84%	2,350	93.29%
Municipal	1,090	94.45%	707	92.18%
Primary	602	93.48%	871	96.14%
Secondary	686	93.21%	772	91.25%
Interstate	0	0.00%	0	0.00%
Southwest	3,151	92.19%	3,551	93.40%
Municipal	1,045	96.14%	1,299	96.72%
Primary	1,589	91.32%	1,956	91.79%
Secondary	440	87.30%	262	89.42%
Interstate	77	88.51%	34	97.14%
Total	11,485	92.07%	11,010	92.47%
Municipal	2,586	95.00%	2,459	95.09%
Primary	4,580	91.69%	4,445	91.95%
Secondary	1,931	88.17%	2,017	88.78%
Interstate	2,388	93.03%	2,089	94.31%

2009 Seat Belt Usage Survey

Chart 14

Seat Belt Usage by Day of Week and Road System

Day of Week and Road System	Usage	
	April	July
Sunday	1,973 90.46%	2,194 89.59%
Municipal	293 92.43%	297 95.19%
Primary	1,428 89.47%	1,516 89.07%
Secondary	228 93.44%	355 87.65%
Interstate	24 100.00%	26 86.67%
Monday	1,398 90.72%	1,411 92.71%
Municipal	430 96.41%	497 95.03%
Primary	179 96.76%	172 92.97%
Secondary	620 85.40%	544 89.92%
Interstate	169 91.85%	198 94.74%
Tuesday	2,013 91.04%	2,168 95.59%
Municipal	406 94.42%	533 98.16%
Primary	273 90.40%	312 93.13%
Secondary	544 86.08%	546 93.81%
Interstate	790 93.27%	777 96.16%
Wednesday	2,652 91.51%	2,666 93.51%
Municipal	600 94.34%	589 92.46%
Primary	1,076 89.15%	1,152 93.35%
Secondary	406 91.65%	572 93.77%
Interstate	570 93.14%	353 95.41%
Thursday	1,005 93.23%	748 92.23%
Municipal	0 0.00%	0 0.00%
Primary	546 91.76%	351 90.23%
Secondary	0 0.00%	0 0.00%
Interstate	459 95.03%	397 94.08%
Friday	917 89.55%	788 93.59%
Municipal	291 84.35%	241 94.51%
Primary	209 90.87%	218 93.56%
Secondary	15 100.00%	18 94.74%
Interstate	402 92.63%	311 92.84%
Saturday	1,555 90.99%	1,584 91.88%
Municipal	181 95.26%	124 93.23%
Primary	704 92.75%	695 96.26%
Secondary	220 79.71%	193 76.28%
Interstate	450 92.98%	572 92.86%
Total	11,513 91.07%	11,559 92.72%
Municipal	2,201 93.10%	2,281 94.92%
Primary	4,415 90.58%	4,416 92.00%
Secondary	2,033 87.03%	2,228 90.06%
Interstate	2,864 93.35%	2,634 94.41%

Chart 15

Seat Belt Usage by Time of Day and Road System

Time of Day and Road System	Usage	
	April	July
7 a.m. to 7:59 a.m.	861 91.40%	1,099 94.74%
Municipal	113 86.26%	184 91.09%
Primary	598 92.00%	748 96.64%
Secondary	26 86.67%	21 77.78%
Interstate	124 94.66%	146 92.99%
8 a.m. to 8:59 a.m.	461 82.32%	500 84.75%
Municipal	72 93.51%	90 94.74%
Primary	210 73.94%	184 76.03%
Secondary	74 89.16%	88 93.62%
Interstate	105 90.52%	138 86.79%
9 a.m. to 9:59 a.m.	1,215 92.19%	1,261 92.04%
Municipal	579 92.79%	676 90.01%
Primary	213 92.61%	188 96.91%
Secondary	77 100.00%	52 94.55%
Interstate	346 89.41%	345 93.24%
10 a.m. to 10:59 a.m.	941 93.91%	932 94.14%
Municipal	367 92.44%	324 94.46%
Primary	574 94.88%	608 93.97%
Secondary	0 0.00%	0 0.00%
Interstate	0 0.00%	0 0.00%
11 a.m. to 11:59 a.m.	463 81.37%	439 87.28%
Municipal	0 0.00%	0 0.00%
Primary	119 90.15%	221 96.51%
Secondary	170 79.07%	128 72.73%
Interstate	174 78.38%	90 91.84%
12 p.m. to 12:59 p.m.	1,018 94.00%	1,002 95.07%
Municipal	88 97.78%	127 93.38%
Primary	605 94.24%	569 95.15%
Secondary	12 100.00%	15 83.33%
Interstate	313 92.33%	291 96.36%
1 p.m. to 1:59 p.m.	733 84.25%	737 91.33%
Municipal	91 60.67%	110 77.46%
Primary	454 86.64%	389 95.58%
Secondary	0 0.00%	0 0.00%
Interstate	188 95.92%	238 92.25%
2 p.m. to 2:59 p.m.	1,530 91.67%	1,445 91.40%
Municipal	136 94.44%	135 95.74%
Primary	588 89.77%	530 90.29%
Secondary	391 95.83%	368 92.23%
Interstate	415 89.83%	412 90.75%
3 p.m. to 3:59 p.m.	542 94.76%	439 96.91%
Municipal	0 0.00%	0 0.00%
Primary	259 93.17%	219 95.22%
Secondary	124 95.38%	123 99.19%
Interstate	159 96.95%	97 97.98%
4 p.m. to 4:59 p.m.	1,512 91.47%	1,467 93.14%
Municipal	279 93.00%	294 94.23%
Primary	419 91.29%	413 90.77%
Secondary	542 91.86%	341 96.33%
Interstate	272 89.47%	419 92.29%
5 p.m. to 5:59 p.m.	560 93.49%	513 94.30%
Municipal	362 92.58%	353 92.65%
Primary	96 94.12%	97 97.98%
Secondary	102 96.23%	63 98.44%
Interstate	0 0.00%	0 0.00%
6 p.m. to 6:59 p.m.	1,677 92.91%	1,725 93.75%
Municipal	104 94.55%	97 96.04%
Primary	839 92.10%	985 95.17%
Secondary	544 92.99%	492 89.62%
Interstate	190 95.48%	151 97.42%
Total	11,513 91.07%	11,559 92.72%
Municipal	2,191 90.76%	2,390 91.78%
Primary	4,974 90.90%	5,151 93.71%
Secondary	2,062 92.22%	1,691 90.91%
Interstate	2,286 90.71%	2,327 92.86%

2009 Seat Belt Usage Survey

Chart 16

Site Selection by County

County	Population	Category	Area	Sites	County	Population	Category	Area	Sites
Adair	8,243	E	SW		Jefferson	16,181	E	SE	
Adams	4,482	E	SW		Johnson	111,006	C	SE	
Allamakee	14,675	E	NE		Jones	20,221	E	SE	
Appanoose	13,721	E	SE		Keokuk	11,400	E	SE	1
Audubon	6,830	E	SW		Kossuth	17,163	E	NW	
Benton	25,308	E	NE		Lee	38,052	D	SE	
Black Hawk	128,012	B	NE		Linn	191,701	B	NE	9
Boone	26,224	D	NW		Louisa	12,183	E	SE	3
Bremer	23,325	B	NE		Lucas	9,422	E	SE	
Buchanan	21,093	E	NE		Lyon	11,763	E	NW	
Buena Vista	20,411	E	NW	5	Madison	14,019	E	SW	
Butler	15,305	E	NE	5	Mahaska	22,335	E	SE	
Calhoun	11,115	E	NW		Marion	32,052	D	SE	
Carroll	21,421	E	NE		Marshall	39,311	D	NE	
Cass	14,684	E	SW		Mills	14,547	E	SW	
Cedar	18,187	E	SE		Mitchell	10,874	E	NE	
Cerro Gordo	46,447	D	NE		Monona	10,020	E	NW	
Cherokee	13,035	E	NW		Monroe	8,016	E	SE	
Chickasaw	13,095	E	NE		Montgomery	11,771	E	SW	
Clarke	9,133	E	SW	2	Muscatine	41,722	E	SE	
Clay	17,372	E	NW	7	O'Brien	15,102	E	NW	
Clayton	18,678	E	NE		Osceola	7,003	E	NW	
Clinton	50,149	D	SE		Page	16,976	E	SW	
Crawford	16,942	E	NW		Palo Alto	10,147	E	NW	
Dallas	40,750	A	SW	2	Plymouth	24,849	E	NW	
Davis	8,541	E	SE		Pocahontas	8,662	E	NW	
Decatur	8,689	E	SW	6	Polk	374,601	A	SW	9
Delaware	18,404	E	NE		Pottawattamie	87,704	C	SW	12
Des Moines	42,351	D	SE		Poweshiek	18,815	E	SE	
Dickinson	16,424	E	NW		Ringgold	5,469	E	SW	
Dubuque	89,143	C	NE		Sac	11,529	E	NW	
Emmet	11,027	E	NW		Scott	158,668	B	SE	8
Fayette	22,008	D	NE		Shelby	13,173	E	SW	
Floyd	16,900	E	NE		Sioux	31,589	D	NW	
Franklin	10,704	E	NE	6	Story	79,981	D	NW	12
Fremont	8,010	E	SW		Tama	18,103	E	NE	
Greene	10,366	E	NW		Taylor	6,958	E	SW	
Grundy	12,369	E	NE		Union	12,309	E	SW	
Guthrie	11,353	E	NW		Van Buren	7,809	E	SE	
Hamilton	16,438	E	NW		Wapello	36,051	D	SE	7
Hancock	12,100	E	NW		Warren	40,671	A	SW	2
Hardin	18,812	E	NE		Washington	20,670	E	SE	4
Harrison	15,666	E	SW		Wayne	6,730	E	SE	
Henry	20,336	E	SE		Webster	40,235	D	NW	
Howard	9,932	E	NE		Winnebago	11,723	E	NW	
Humboldt	10,381	E	NW		Winneshiek	21,310	E	NE	
Ida	7,837	E	NW		Woodbury	103,877	C	NW	
Iowa	15,671	E	SE		Worth	7,909	E	NE	
Jackson	20,296	E	NE		Wright	14,334	E	NW	
Jasper	37,213	D	SE		Totals	2,926,324			100

NOTE: Population data based on the 2000 Census

2009 Seat Belt Usage Surve

Chart 17

Site Selection by Area of State

Area of State	Northeast	Southeast	Northwest	Southwest	Totals
Number of Selected Sites	20	23	24	33	100
Number of Possible Counties	25	25	29	20	99
Number of Selected Counties	3	5	3	6	17
Percentage of Counties Selected	12.00%	16.00%	10.34%	30.00%	17.17%
Total Population in Area	835,135	777,502	599,002	714,685	2,926,324.00
Percentage of Total State Populatio	28.54%	26.57%	20.47%	24.42%	100.00%

Chart 18

Site Selection by Population Category

Area of State	A - Over 200,000	B - 150,000 to 200,000	C - 75,000 to 150,000	D - 25,000 to 75,000	E - Under 25,000	Total
Number of Selected Sites	13	17	12	19	39	61
Number of Possible Counties	3	4	4	13	75	24
Number of Selected Counties	3	2	1	2	9	17
Percentage of Counties Selected	3.00%	2.00%	1.00%	2.00%	9.00%	17.00%
Total Population in Area	456,022	501,706	391,730	521,663	1,055,203	2,926,324.00
Percentage of Total State Populatio	15.58%	17.14%	13.39%	17.83%	36.06%	100.00%

Chart 19

2008 Statewide Vehicle Miles of Travel

Vehicle Miles	Municipal	Rural	Total	Percentage
Statewide Total	12,707,290	18,246,722	30,954,012	100.00%
Municipal	6,775,738	NA	6,775,738	21.89%
Primary	3,464,137	7,846,431	11,310,568	36.54%
Secondary	NA	5,438,615	5,438,615	17.57%
Interstate	2,467,415	4,961,676	7,429,091	24.00%

NOTE: Vehicle miles of travel reported in 1,000,000 and provided by the Iowa Dept. of Transportation's Office of Transportation Data & counts only cars, pickups, vans & SUVs

2009 Seat Belt Usage Survey

Chart 20

April Seat Belt Survey Sites

No	County	Area	Day	Time	Location	City	Population	System	Observed	Belted
1	Polk	SW	TUE	5 PM	Aurora @ Beaver	Des Moines	A	M	494	450
2	Story	NW	SUN	5 PM	6th @ Grand	Ames	D	M	76	70
3	Story	NW	SUN	8 AM	Duff Exit @ Hwy 30	Ames	D	P	86	76
4	Story	NW	MON	3 PM	E23 @ Hwy 69		D	S	84	72
5	Story	NW	MON	7 AM	E63 @ Hwy 65		D	S	22	19
6	Polk	SW	SUN	12 PM	7th & Grand	Des Moines	A	M	116	96
7	Story	NW	SAT	5 PM	Hwy 133 @ Hwy 30		D	P	72	70
8	Dallas	SW	MON	5 PM	Hwy 141 @ Hwy 210		A	P	45	44
9	Polk	SW	TUE	4 PM	Hwy 160 @ Hwy 69	Ankeny	A	P	206	184
10	Story	NW	SAT	8 AM	Hwy 210 @ Hwy 65		D	P	29	25
11	Story	NW	SAT	12 PM	Hwy 210 @ Hwy 69		D	P	83	77
12	Story	NW	SAT	12 PM	Hwy 65 @ Hwy 30		D	P	59	52
13	Polk	SW	MON	9 AM	Hwy 945 @ Hwy 931		A	P	32	30
14	Story	NW	TUE	2 PM	I-35 Exit # 123		D	I	20	17
15	Polk	SW	MON	1 PM	I-35 Exit # 92		A	I	70	62
16	Polk	SW	SUN	10 AM	I-35 Rest Area		A	I	13	13
17	Story	NW	MON	11 AM	I-35 Rest Area		D	I	32	30
18	Dallas	SW	SAT	10 AM	I-80 Exit # 110		A	I	139	132
19	Polk	SW	SAT	12 PM	I-80 Exit # 143		A	I	152	133
20	Polk	SW	SAT	1 PM	Indianola Ave @ SE 8th	Des Moines	A	M	131	103
21	Story	NW	SAT	3 PM	J Ave. @ 6th	Nevada	D	M	50	45
22	Story	NW	SAT	10 AM	Main @ Clark	Ames	D	M	154	140
23	Polk	SW	SUN	1 PM	Meredith @ Merle Hay	Des Moines	A	M	464	407
24	Clarke	SW	THU	6 PM	E Washington @ Main St	Osceola	E	M	66	64
25	Decatur	SW	WED	2 PM	J 12 @ Hwy 69	Weldon	E	P	67	60
26	Warren	SW	SUN	1 PM	Hwy 28 @ Hwy 92	Martensdale	A	P	46	45
27	Clarke	SW	WED	6 PM	Hwy 34 @ Hwy 69		E	P	296	287
28	Decatur	SW	SUN	10 AM	I-35 Exit # 12		E	I	22	22
29	Decatur	SW	WED	4 PM	I-35 Exit # 22		E	I	23	21
30	Decatur	SW	SAT	3 PM	J 20 @ R69	Garden Grove	E	S	11	10
31	Decatur	SW	THU	2 PM	J 66 @ Hwy 69	Davis City	E	S	0	0
32	Warren	SW	SUN	8 AM	R 57 @ Hwy 92		A	S	25	22
33	Decatur	SW	THU	4 PM	West Jct. Hwy 69 @ Hwy 2	Leon	E	P	103	93
34	Pottawattamie	SW	MON	12 PM	9th Ave. @ S 16th	Council Bluffs	C	M	221	213
35	Pottawattamie	SW	TUE	3 PM	A Ave & 25th St	Council Bluffs	C	M	319	306
36	Pottawattamie	SW	FRI	6 PM	Hwy 191 @ Hwy 83		C	P	121	112
37	Pottawattamie	SW	MON	6 PM	Hwy 6 @ Hwy 191		C	P	138	130
38	Pottawattamie	SW	MON	4 PM	Hwy 6 @ Hwy 59		C	P	118	109
39	Pottawattamie	SW	MON	10 AM	Hwy 83 @ Hwy 59		C	P	80	76
40	Pottawattamie	SW	TUE	5 PM	Hwy 92 @ Hwy 59		C	P	129	118
41	Pottawattamie	SW	FRI	2 PM	I-29 Exit # 47		C	I	94	92
42	Pottawattamie	SW	TUE	1 PM	I-80 Exit # 40		C	I	114	105
43	Pottawattamie	SW	MON	8 AM	I-80 Rest Area		C	I	135	130
44	Pottawattamie	SW	FRI	4 PM	L55 @ Hwy 6		C	S	62	62
45	Pottawattamie	SW	MON	2 PM	M 16 @ Hwy 92		C	S	40	40
46	Buena Vista	NW	WED	3 PM	C 49 @ Hwy 71		E	S	402	390
47	Buena Vista	NW	MON	10 AM	Hwy 110 @ Hwy 7		E	P	543	481
48	Buena Vista	NW	WED	5 PM	Hwy 7 @ Hwy 71		E	P	332	276
49	Buena Vista	NW	MON	12 PM	Hwy 7 @ Hwy 71		E	P	173	166
50	Buena Vista	NW	WED	1 PM	Lake @ Third	Storm Lake	E	M	102	94
51	Clay	NW	THU	6 PM	4th @ Grand	Spencer	E	M	192	177
52	Clay	NW	THU	4 PM	B 53 @ Hwy 71		E	S	11	11
53	Clay	NW	THU	2 PM	Grand @ 18th	Spencer	E	M	535	517
54	Clay	NW	FRI	2 PM	Hwy 10 @ Hwy 71		E	P	28	28
55	Clay	NW	FRI	6 PM	Hwy 18 @ Hwy 71		E	P	76	72
56	Clay	NW	SAT	1 PM	B40 @ Hwy 71		E	P	47	46
57	Clay	NW	FRI	4 PM	N 14 @ Hwy 18		E	S	30	29
58	Franklin	NE	SUN	12 PM	1st @ 1st Ave	Hampton	E	M	73	62
59	Franklin	NE	FRI	2 PM	C 25 @ Hwy 65		E	S	15	14
60	Butler	NE	SUN	10 AM	C 55 @ Hwy 14		E	S	8	6
61	Franklin	NE	WED	1 PM	S14 @ Hwy 107		E	P	45	34
62	Butler	NE	WED	4 PM	Hwy 14 @ Hwy 20		E	P	43	27
63	Butler	NE	FRI	4 PM	Hwy 14 @ Hwy 3		E	P	60	57
64	Butler	NE	WED	6 PM	Hwy 188 @ Hwy 3		E	P	36	31
65	Franklin	NE	SUN	8 AM	Hwy 65 @ Hwy 3		E	P	98	62
66	Franklin	NE	FRI	6 PM	I-35 Exit # 165		E	I	66	52
67	Franklin	NE	WED	3 PM	I-35 Exit # 170		E	I	7	7
68	Butler	NE	WED	5 PM	Main @ Railroad	Allison	E	M	193	140
69	Linn	NE	MON	7 AM	8th Ave @ 2nd	Cedar Rapids	B	M	259	239
70	Linn	NE	WED	8 AM	E 34 @ Hwy 13		B	S	190	183
71	Linn	NE	MON	9 AM	E 70 @ Hwy 151		B	S	30	25
72	Linn	NE	MON	10 AM	First Ave @ 29th	Cedar Rapids	B	M	266	251
73	Linn	NE	MON	8 AM	Hwy 1 @ Hwy 30		B	P	208	201
74	Linn	NE	MON	12 PM	Hwy 13 @ Hwy 151		B	P	275	257
75	Linn	NE	WED	12 PM	Hwy 30 @ Hwy 1		B	P	185	171
76	Linn	NE	MON	11 AM	I-380 Mile Marker 13		B	I	130	124
77	Linn	NE	WED	11 AM	I-380 Mile Marker 25		B	I	90	89
78	Scott	SE	MON	5 PM	F 55 Exit @ Hwy 61		B	P	57	51
79	Scott	SE	MON	1 PM	Hwy 61 @ Hwy 22 Ramp		B	P	80	77
80	Scott	SE	SAT	7 AM	I-280 Hwy 61 Exit		B	I	121	119
81	Scott	SE	MON	8 AM	I-80 Exit # 284 (Y40)		B	I	60	55
82	Scott	SE	MON	3 PM	Kimberly @ Harrison	Davenport	B	M	268	265
83	Scott	SE	SAT	9 AM	Locust @ Brady	Davenport	B	M	260	245
84	Scott	SE	MON	12 PM	Long Grove Exit @ Hwy 61		B	P	102	100
85	Scott	SE	SAT	11 AM	Y 48 @ Hwy 61		B	S	168	153
86	Washington	SE	FRI	9 AM	East 7th @ North 4th	Washington	E	M	116	99
87	Washington	SE	SUN	9 AM	G6W @ Hwy 92		E	S	19	19
88	Washington	SE	FRI	7 AM	Hwy 1 @ Hwy 92		E	P	90	85
89	Washington	SE	WED	6 PM	Hwy 218 Ramp @ Hwy 92		E	P	124	121
90	Louisa	SE	WED	4 PM	Hwy 92 @ Hwy 61		E	P	165	160
91	Louisa	SE	WED	2 PM	South 4th @ Washington	Wapello	E	M	18	16
92	Louisa	SE	FRI	11 AM	X 43 @ Hwy 92		E	S	27	27
93	Wapello	SE	SUN	11 AM	Church @ Richmond	Ottumwa	D	M	189	171
94	Wapello	SE	SUN	7 AM	East Jct Hwy 34 & Hwy 63		D	P	64	62
95	Wapello	SE	SAT	1 PM	Hwy 137 @ Hwy 63		D	P	150	147
96	Keokuk	SE	SUN	9 AM	Hwy 149 @ Hwy 23		D	P	97	91
97	Wapello	SE	SAT	3 PM	Hwy 16 @ Hwy 34		D	P	133	131
98	Wapello	SE	SAT	5 PM	T 61 @ Hwy 34		D	S	103	99
99	Wapello	SE	MON	1 PM	V 37 (College St) @ Hwy 34 Agency		D	S	56	45
100	Wapello	SE	MON	3 PM	Wapello St @ Albia Rd	Ottumwa	E	M	400	364
									12,474	11,485

2009 Seat Belt Usage Survey

Chart 21

July Seat Belt Survey Sites										
No	County	Area	Day	Time	Location	City	Population	System	Observed	Belted
1	Polk	SW	TUE	6 PM	Aurora @ Beaver	Des Moines	A	M	320	270
2	Story	NW	SUN	5 PM	6th @ Grand	Ames	D	M	114	104
3	Story	NW	SUN	8 AM	Duff Exit @ Hwy 30	Ames	D	P	78	76
4	Story	NW	MON	3 PM	E 23 @ Hwy 69		D	S	168	158
5	Story	NW	MON	7 AM	E 63 @ Hwy 65		D	S	19	17
6	Polk	SW	SUN	12 PM	Grand @ 7th	Des Moines	A	M	345	310
7	Story	NW	SAT	5 PM	Hwy 133 @ Hwy 30		D	P	117	112
8	Dallas	SW	MON	5 PM	Hwy 141 @ Hwy 210		A	P	72	68
9	Polk	SW	SAT	8 AM	Hwy 160 @ Hwy 69	Ankeny	A	P	128	118
10	Story	NW	TUE	4 PM	Hwy 210 @ Hwy 65		D	P	78	75
11	Story	NW	SAT	8 AM	Hwy 210 @ Hwy 69		D	P	80	73
12	Story	NW	SAT	12 PM	Hwy 65 @ Hwy 30		D	P	67	64
13	Polk	SW	MON	9 AM	Hwy 945 @ Hwy 931		A	P	21	21
14	Story	NW	TUE	2 PM	I-35 Exit # 123		D	I	16	15
15	Polk	SW	MON	1 PM	I-35 Exit # 92		A	I	73	60
16	Polk	SW	SUN	10 AM	I-35 Rest Area		A	I	52	50
17	Story	NW	MON	11 AM	I-35 Rest Area		D	I	45	42
18	Dallas	SW	SAT	10 AM	I-80 Exit # 110		A	I	123	119
19	Polk	SW	SAT	12 pm	I-80 Exit # 143		A	I	114	104
20	Polk	SW	SAT	1 PM	Indianola Ave @ SE 8th	Des Moines	A	M	173	141
21	Story	NW	SAT	3 PM	J Ave. @ 6th	Nevada	D	M	60	58
22	Story	NW	SAT	10 AM	Main @ Clark	Ames	D	M	67	53
23	Polk	SW	SUN	1 PM	Meredith @ Merle Hay	Des Moines	A	M	614	563
24	Clarke	SW	THU	6 PM	E Washington @ Main St	Osceola	E	M	51	47
25	Decatur	SW	WED	2 PM	Hwy 266 @ Hwy 69	Weldon	A	P	19	19
26	Warren	SW	SUN	12 PM	Hwy 28 @ Hwy 92	Martensdale	E	P	63	63
27	Clarke	SW	WED	6 PM	Hwy 34 @ Hwy 69		E	P	388	360
28	Decatur	SW	SUN	10 AM	I-35 Exit # 12		E	I	36	36
29	Decatur	SW	WED	4 PM	I-35 Exit # 22		E	I	36	36
30	Decatur	SW	SAT	3 PM	J 20 @ Hwy 204	Garden Grove	E	S	19	15
31	Decatur	SW	THU	2 PM	J 66 @ Hwy 69	Davis City	E	S	21	19
32	Warren	SW	SUN	8 AM	R 57 @ Hwy 92		A	S	34	34
33	Decatur	SW	THU	4 PM	West Jct. Hwy 69 @ Hwy 2	Leon	E	P	155	128
34	Pottawattamie	SW	MON	12 PM	9th Ave. @ S 16th	Council Bluffs	C	M	204	192
35	Pottawattamie	SW	TUE	3 PM	A Ave & 25th St	Council Bluffs	C	M	362	334
36	Pottawattamie	SW	FRI	6 PM	Hwy 191 @ Hwy 83		C	P	113	102
37	Pottawattamie	SW	MON	6 PM	Hwy 6 @ Hwy 191		C	P	158	144
38	Pottawattamie	SW	MON	4 PM	Hwy 6 @ Hwy 59		C	P	130	119
39	Pottawattamie	SW	MON	10 AM	Hwy 83 @ Hwy 59		C	P	99	93
40	Pottawattamie	SW	TUE	5 PM	Hwy 92 @ Hwy 59		C	P	135	124
41	Pottawattamie	SW	FRI	2 PM	I-29 Exit # 47		C	I	141	135
42	Pottawattamie	SW	TUE	1 PM	I-80 Exit # 40		C	I	111	103
43	Pottawattamie	SW	MON	8 AM	I-80 Rest Area		C	I	137	131
44	Pottawattamie	SW	FRI	4 PM	L 55 @ Hwy 6		C	S	57	55
45	Pottawattamie	SW	MON	2 PM	M 16 @ Hwy 92		C	S	48	47
46	Buena Vista	NW	WED	3 PM	C 49 @ Hwy 71		E	S	53	47
47	Buena Vista	NW	MON	10 AM	Hwy 110 @ Hwy 7		E	P	22	22
48	Buena Vista	NW	WED	5 PM	Hwy 7 @ Hwy 71		E	P	115	100
49	Buena Vista	NW	MON	12 PM	Hwy 7 @ Hwy 71		E	P	86	84
50	Buena Vista	NW	WED	1 PM	Lake @ Third	Storm Lake	E	M	41	36
51	Clay	NW	THU	6 PM	4th @ Grand	Spencer	E	M	327	318
52	Clay	NW	THU	4 PM	B 53 @ Hwy 71		E	S	26	25
53	Clay	NW	THU	2 PM	Grand @ 18th	Spencer	E	M	570	562
54	Clay	NW	FRI	2 PM	Hwy 10 @ Hwy 71		E	P	42	41
55	Clay	NW	FRI	6 PM	Hwy 18 @ Hwy 71		E	P	170	168
56	Clay	NW	SAT	1 PM	B 40 @ Hwy 71		E	P	62	60
57	Clay	NW	FRI	4 PM	N 14 @ Hwy 18		E	S	47	46
58	Franklin	NE	SUN	12 PM	1st @ 1st Ave	Hampton	E	M	75	64
59	Franklin	NE	FRI	2 PM	C 25 @ Hwy 65		E	S	31	25
60	Butler	NE	SUN	10 AM	C 55 @ Hwy 14		E	S	7	6
61	Franklin	NE	WED	1 PM	S 14 @ Hwy 3		E	P	54	43
62	Butler	NE	WED	4 PM	Hwy 14 @ Hwy 20		E	P	33	27
63	Butler	NE	FRI	4 PM	Hwy 14 @ Hwy 3		E	P	46	37
64	Butler	NE	WED	6 PM	Hwy 188 @ Hwy 3		E	P	56	39
65	Franklin	NE	SUN	8 AM	Hwy 65 @ Hwy 3		E	P	87	72
66	Franklin	NE	FRI	6 PM	I-35 Exit # 165		E	I	67	51
67	Franklin	NE	WED	3 PM	I-35 Exit # 170		E	I	12	9
68	Butler	NE	WED	5 PM	Main @ Railroad	Allison	E	M	185	112
69	Linn	NE	MON	7 AM	8th Ave @ 2nd	Cedar Rapids	B	M	292	263
70	Linn	NE	WED	8 AM	E 34 @ Hwy 13		B	S	117	113
71	Linn	NE	MON	9 AM	E 70 @ Hwy 151		B	S	35	35
72	Linn	NE	MON	10 AM	First Ave @ 29th	Cedar Rapids	B	M	168	153
73	Linn	NE	MON	8 AM	Hwy 1 @ Hwy 30		B	P	157	149
74	Linn	NE	MON	12 PM	Hwy 13 @ Hwy 151		B	P	274	260
75	Linn	NE	WED	12 PM	Hwy 30 @ Hwy 1		B	P	177	167
76	Linn	NE	MON	11 AM	I-380 Mile Marker 13		B	I	124	119
77	Linn	NE	WED	10 AM	I-380 Mile Marker 25		B	I	63	63
78	Scott	SE	MON	5 PM	F 55 Exit @ Hwy 61		B	P	57	52
79	Scott	SE	MON	1 PM	Hwy 61 @ Hwy 22 Ramp		B	P	97	94
80	Scott	SE	SAT	7 AM	I-280 Hwy 61 Exit		B	I	85	84
81	Scott	SE	MON	8 AM	I-80 Exit # 284 (Y40)		B	I	78	75
82	Scott	SE	MON	3 PM	Kimberly @ Harrison	Davenport	B	M	405	392
83	Scott	SE	SAT	9 AM	Locust @ Brady	Davenport	B	M	263	249
84	Scott	SE	MON	12 PM	Long Grove Exit @ Hwy 61		B	P	144	136
85	Scott	SE	SAT	11 AM	Y 48 @ Hwy 61		B	S	237	227
86	Washington	SE	FRI	9 AM	East 7th @ North 4th	Washington	E	M	52	44
87	Washington	SE	SUN	9 AM	G6W @ Hwy 92		E	S	19	19
88	Washington	SE	FRI	7 AM	Hwy 1 @ Hwy 92		E	P	96	96
89	Washington	SE	WED	6 PM	Hwy 218 Ramp @ Hwy 92		E	P	133	131
90	Louisa	SE	WED	4 PM	Hwy 92 @ Hwy 61		E	P	135	128
91	Louisa	SE	WED	2 PM	South 4th @ Washington	Wapello	E	M	26	22
92	Louisa	SE	FRI	11 AM	X 43 @ Hwy 92		E	S	39	39
93	Wapello	SE	SUN	11 AM	Church @ Richmond	Ottumwa	D	M	202	187
94	Wapello	SE	SUN	7 AM	East Jct. Hwy 34 @ Hwy 63		D	P	77	77
95	Wapello	SE	SAT	1 PM	Hwy 137 @ Hwy 63		D	P	128	126
96	Keokuk	SE	SUN	9 AM	Hwy 149 @ Hwy 23		D	P	101	99
97	Wapello	SE	SAT	3 PM	Hwy 16 @ Hwy 34		D	P	74	67
98	Wapello	SE	SAT	5 PM	T 61 @ Hwy 34		D	S	59	53
99	Wapello	SE	MON	1 PM	V 37 (College St) @ Hwy 34 Agency		D	S	73	63
100	Wapello	SE	MON	3 PM	Wapello St @ Albia Rd	Ottumwa	E	M	245	227
									11,907	11,010