



AUTOMATIC TRAFFIC

RECORDERS

2000 - 2010

Prepared by

OFFICE OF TRANSPORTATION DATA

In Cooperation With

**UNITED STATES DEPARTMENT OF TRANSPORTATION
FEDERAL HIGHWAY ADMINISTRATION**

PHONE 515-239-1526

JANUARY 2011

TABLE OF CONTENTS

Introduction.....3

Summary.....4

Percent of Change in Traffic from 19805

Graphs Showing Monthly Comparison

All Systems.....6

Rural.....8

Municipal.....10

Graphs Showing Daily Comparison

All Systems.....7

Rural.....9

Municipal.....11

Graphs Showing Hourly Comparison

Rural Interstate.....12

Rural Primary13

Rural Secondary.....14

Municipal Interstate15

Municipal Primary.....16

Municipal Streets17

Summary of Analysis of Thirtieth Highest Hour.....18

**Annual Average Daily Traffic by Stations
for the Years 2000 to 2010..... 19 - 25**

Map of Automatic Traffic Recorder Locations.....26

INTRODUCTION

This report contains graphic comparisons of daily and monthly traffic collected on Iowa's highway system at 134 Permanent Continuous Automatic Traffic Recorder locations. Fifteen (15) stations are located on the Rural Interstate system, five (5) are on the Municipal Interstate system, sixty-four (64) are on the Rural Primary system, twenty (20) are on the Municipal Primary system, nineteen (19) are on the Rural Secondary system and eleven (11) are on the Municipal Street system. The map on page 26 shows the general location of count sites. Specific descriptions of locations, along with an eleven year summary of AADT's for each station, start on page 19.

The report compares travel trends from 1980 to present. Traffic is shown for rural, municipal and statewide travel.

Factors for estimating Design Hour Volumes from Annual Average Daily Traffic are shown by highway system. The values are developed from the straight-line relationships between Design Hour Volume and Annual Average Daily Traffic for the period of 2001 - 2010.

Information from the permanent traffic recorders indicates a 1.4% increase in statewide travel from 2009 to 2010. The estimated vehicle miles of travel for 2010 is 31.73 billion. Final 2010 traffic figures will be published near June 2011, when all traffic data collected during 2010 has been processed.

More travel occurs on Friday than any other day of the week on all road systems. Sunday is the lowest travel day on all systems except Rural Interstate. This is typical of other years.

TRAFFIC VOLUME VARIATIONS

ON

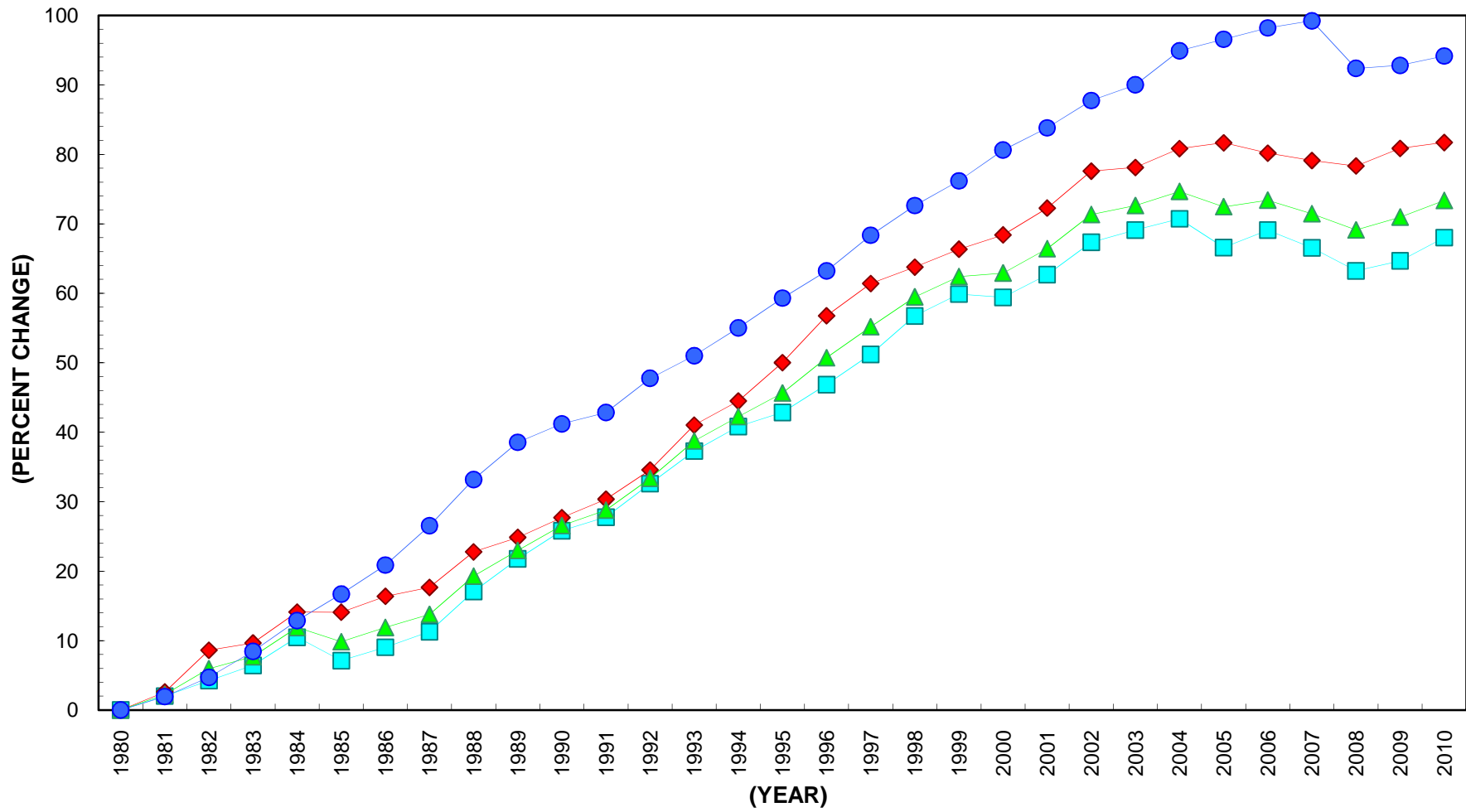
IOWA ROAD SYSTEMS

	2010 COMPARED TO 2009
RURAL INTERSTATE	+ 2.4 %
RURAL PRIMARY	+ 1.7%
RURAL SECONDARY	+ 2.2 %
RURAL TOTAL	+ 2.0 %
MUNICIPAL INTERSTATE	+ 2.2 %
MUNICIPAL PRIMARY	+ 1.2 %
MUNICIPAL STREETS	- 0.6 %
MUNICIPAL TOTAL	+ 0.5 %
STATE TOTAL	+ 1.4 %

Data collected at continuous automatic traffic recorder locations (see pages 19 – 25) were utilized to compute the above percentages. The rural, municipal and state totals were weighted based on estimated vehicle miles of travel.

PERCENT CHANGE IN TRAFFIC

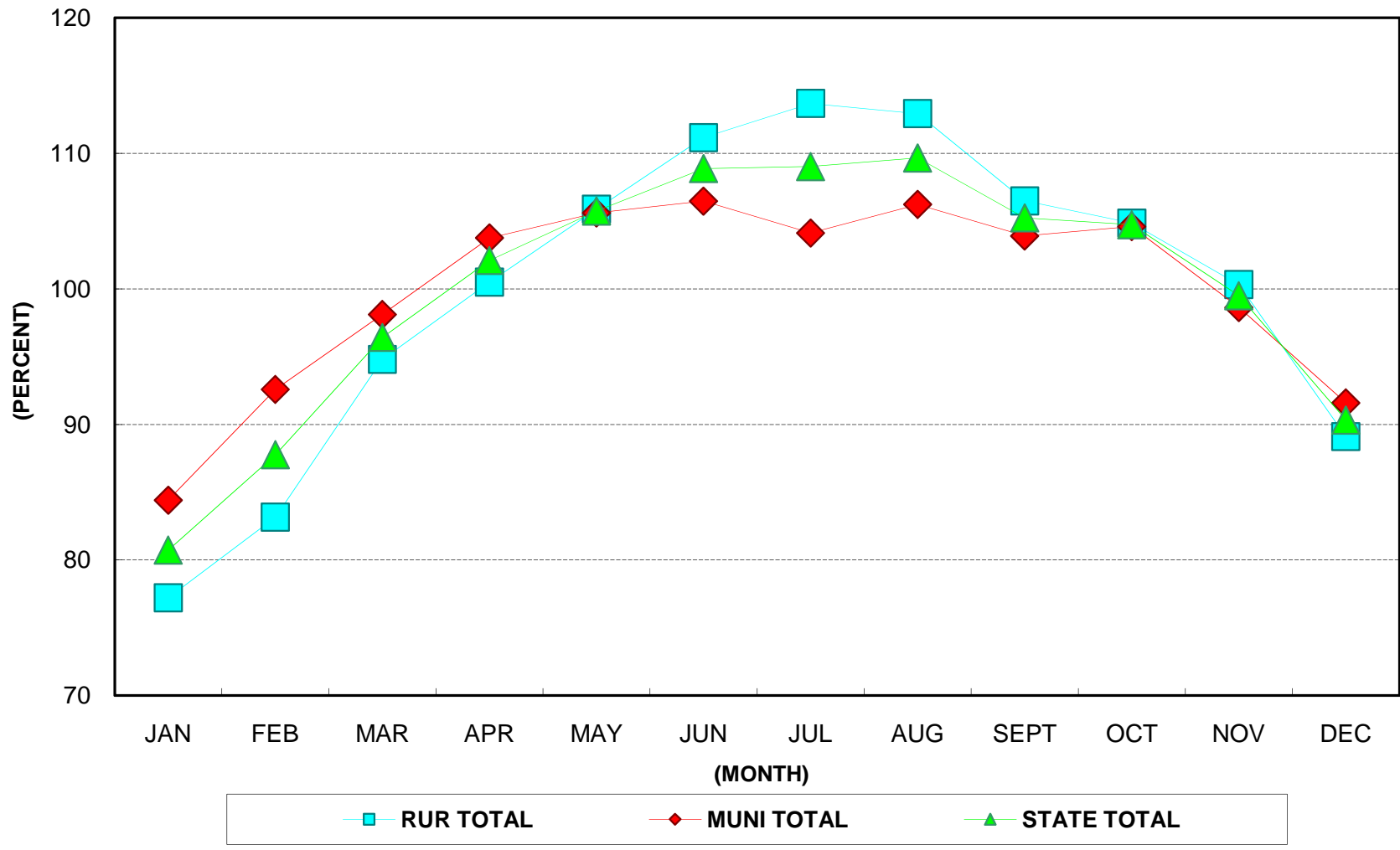
BASE YEAR 1980



■ RURAL ◆ MUNICIPAL ▲ STATE ● U.S.

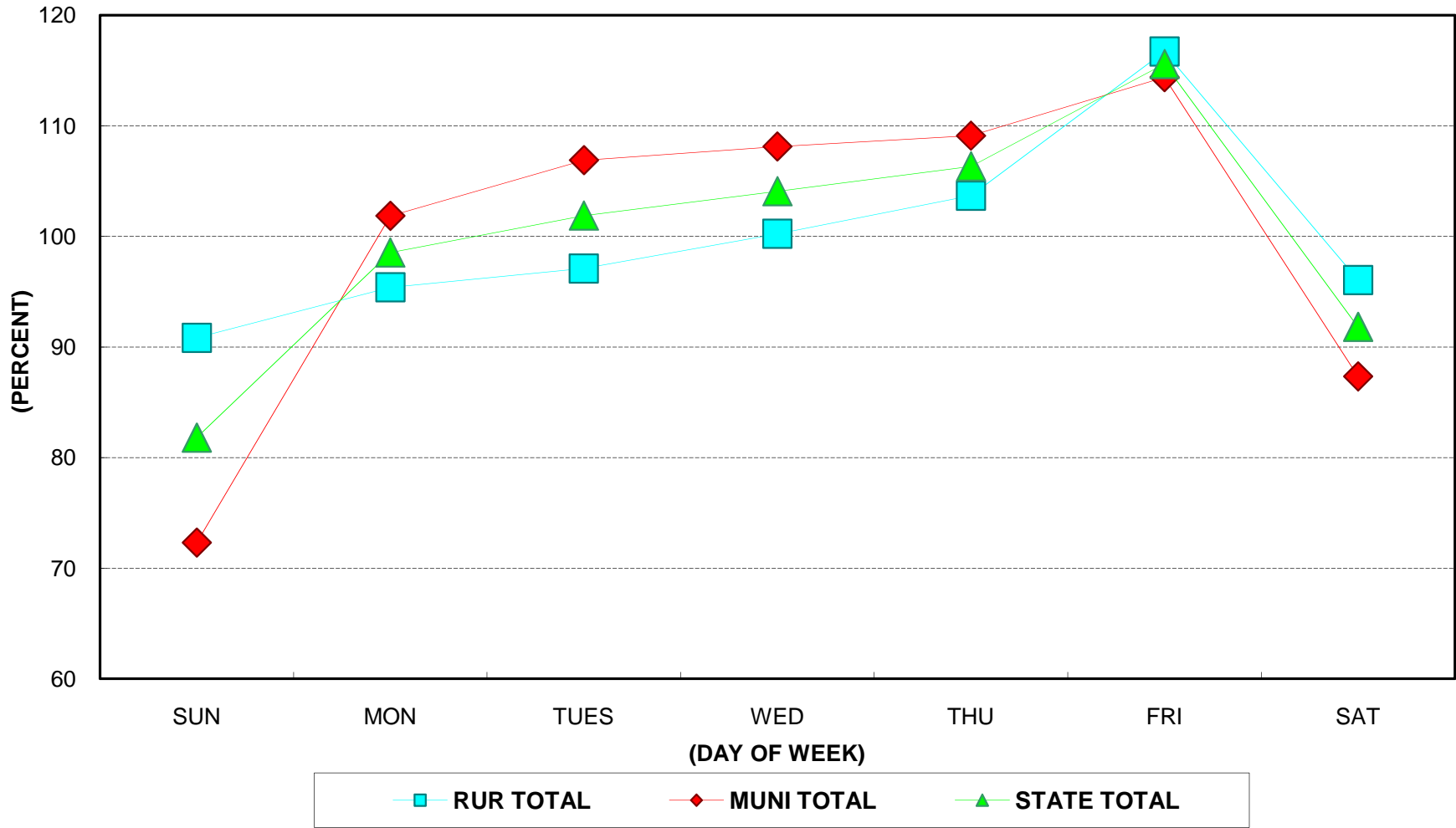
2010 MONTHLY TRAFFIC

AS A % OF ANNUAL AVERAGE DAILY TRAFFIC



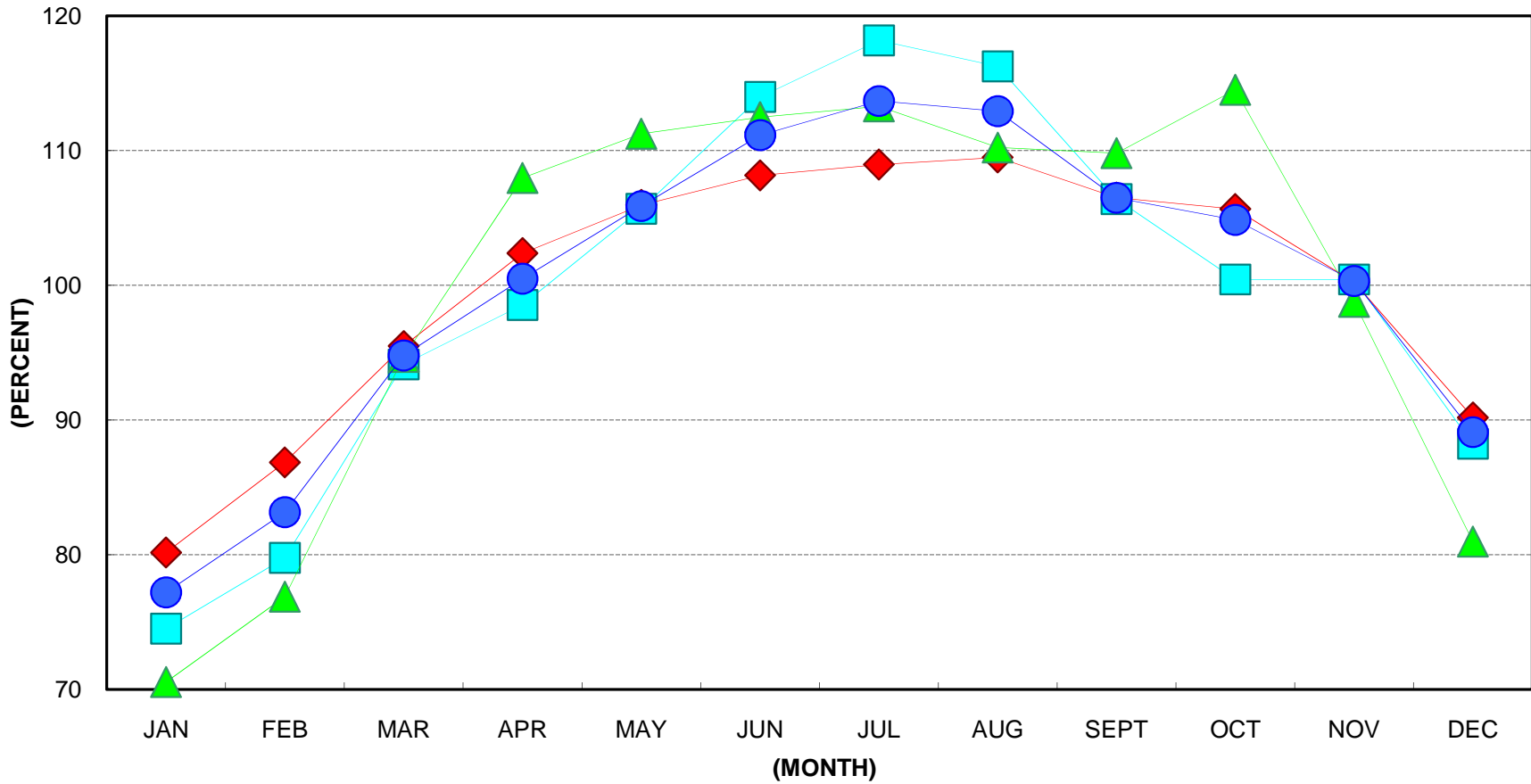
2010 DAY OF WEEK TRAFFIC

AS A % OF ANNUAL AVERAGE DAILY TRAFFIC



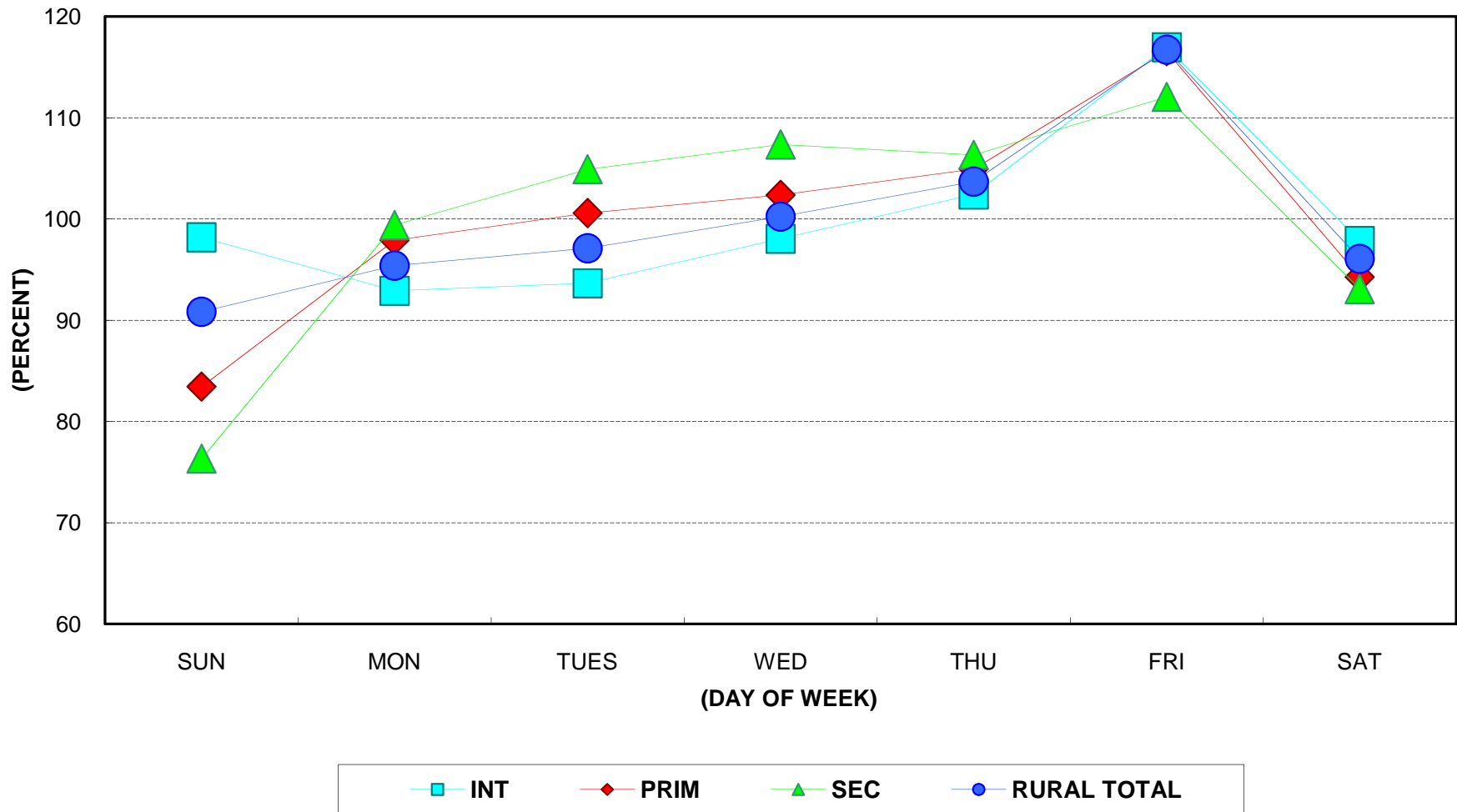
2010 RURAL MONTHLY TRAFFIC

AS A % OF ANNUAL AVERAGE DAILY TRAFFIC



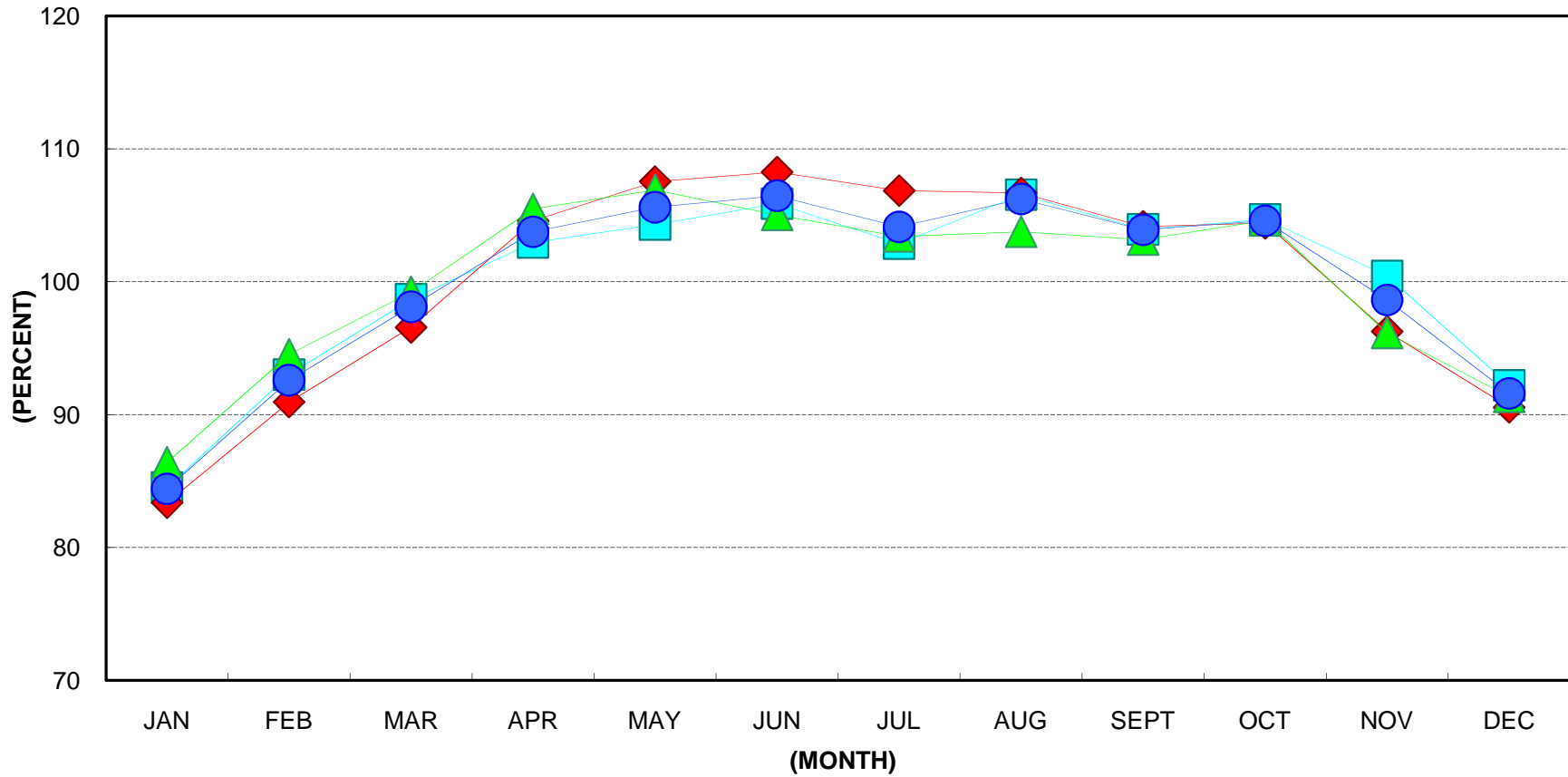
2010 RURAL DAY OF WEEK TRAFFIC

AS A % OF ANNUAL AVERAGE DAILY TRAFFIC



2010 MUNICIPAL MONTHLY TRAFFIC

AS A % OF ANNUAL AVERAGE DAILY TRAFFIC



INT

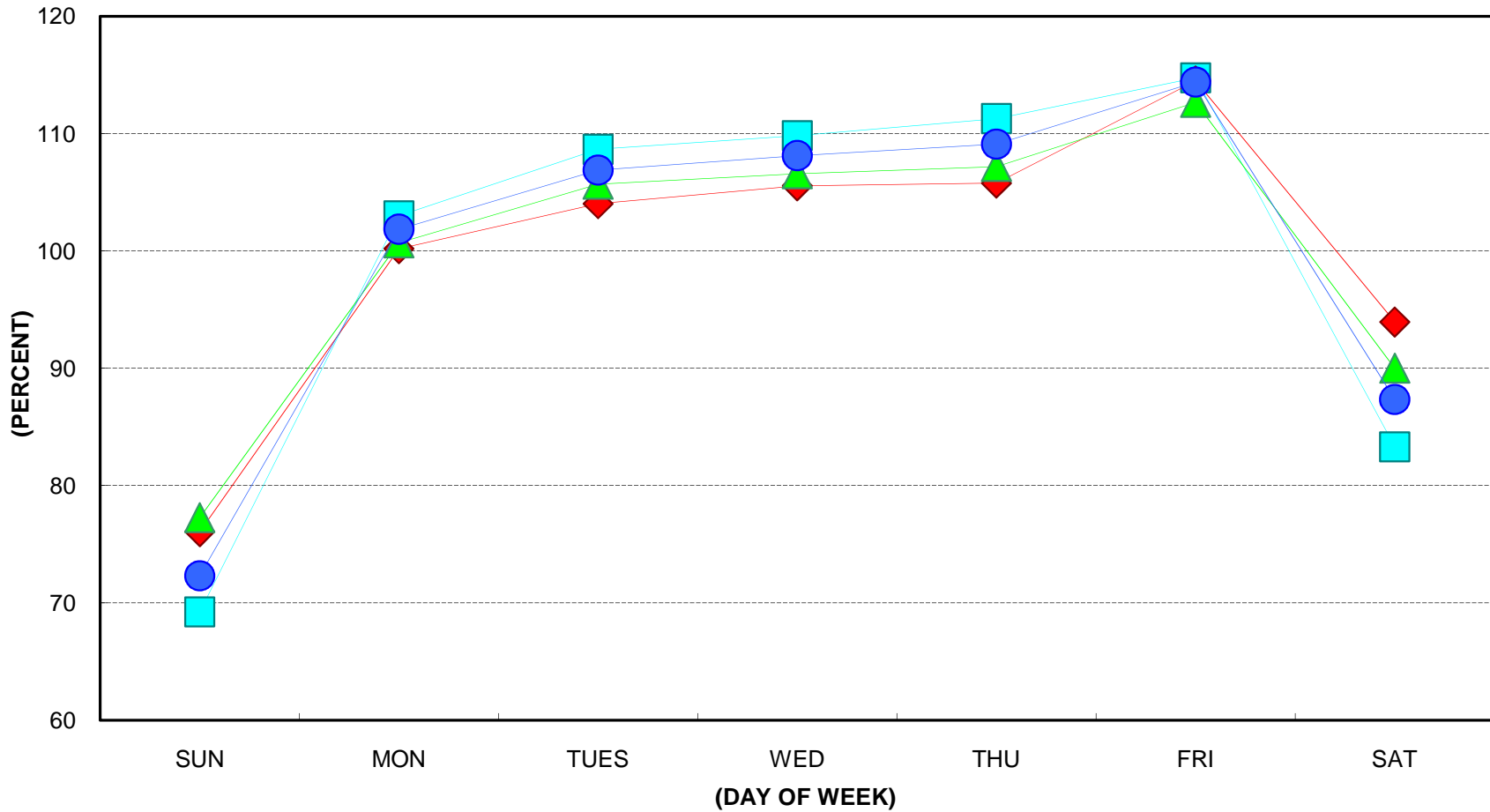
PRIM

CITY ST

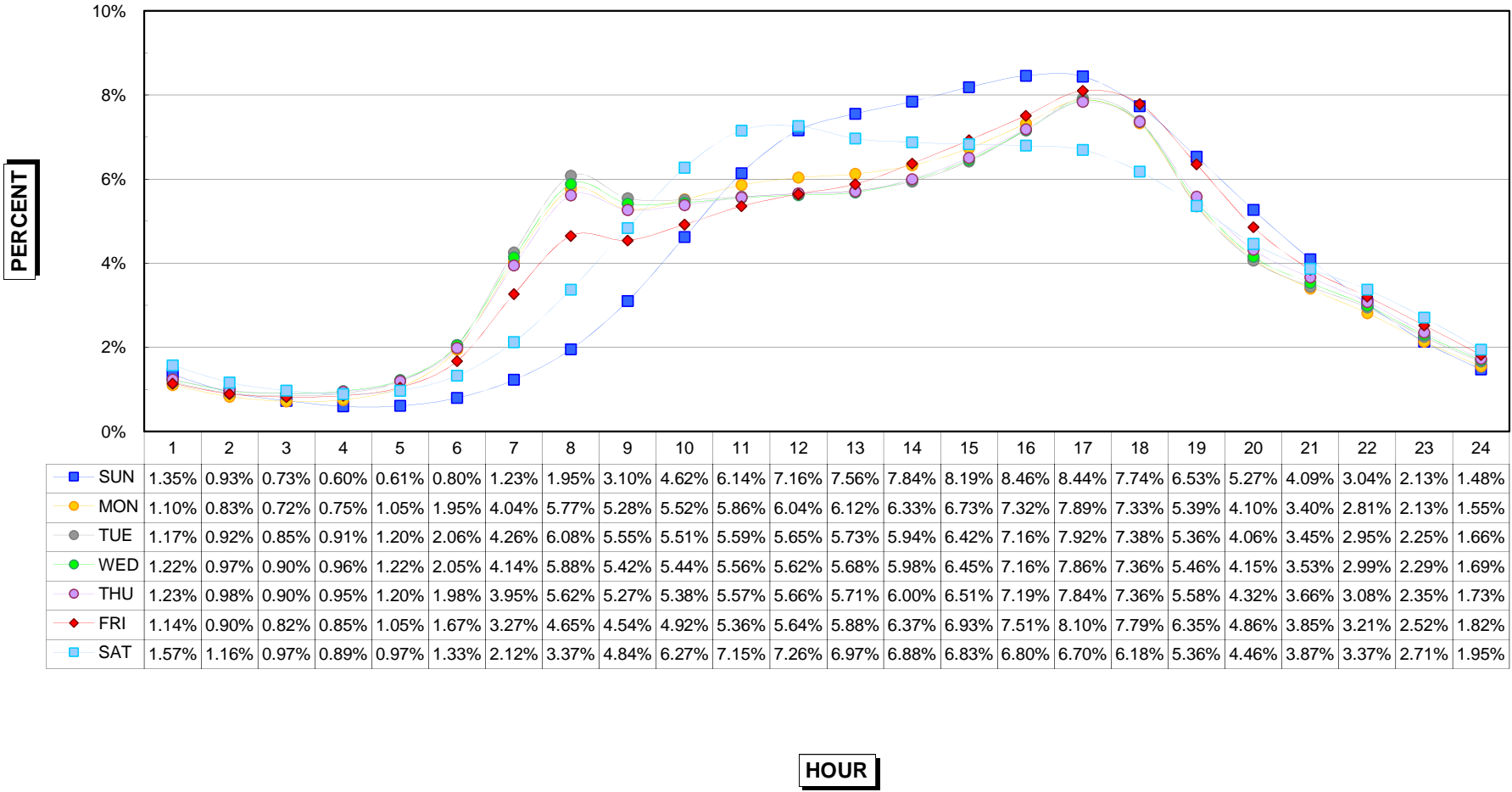
MUNI TOTAL

2010 MUNICIPAL DAY OF WEEK TRAFFIC

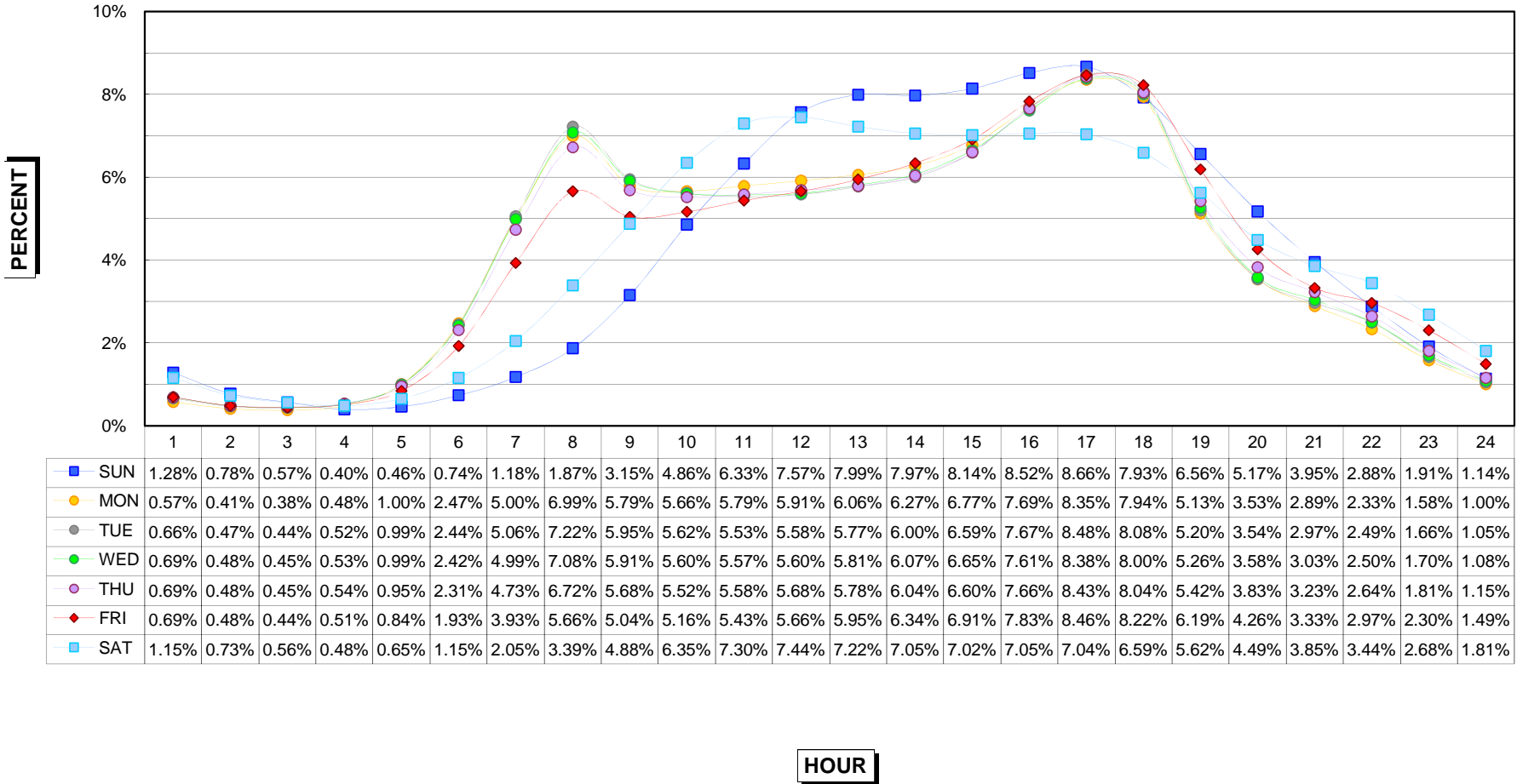
AS A % OF ANNUAL AVERAGE DAILY TRAFFIC



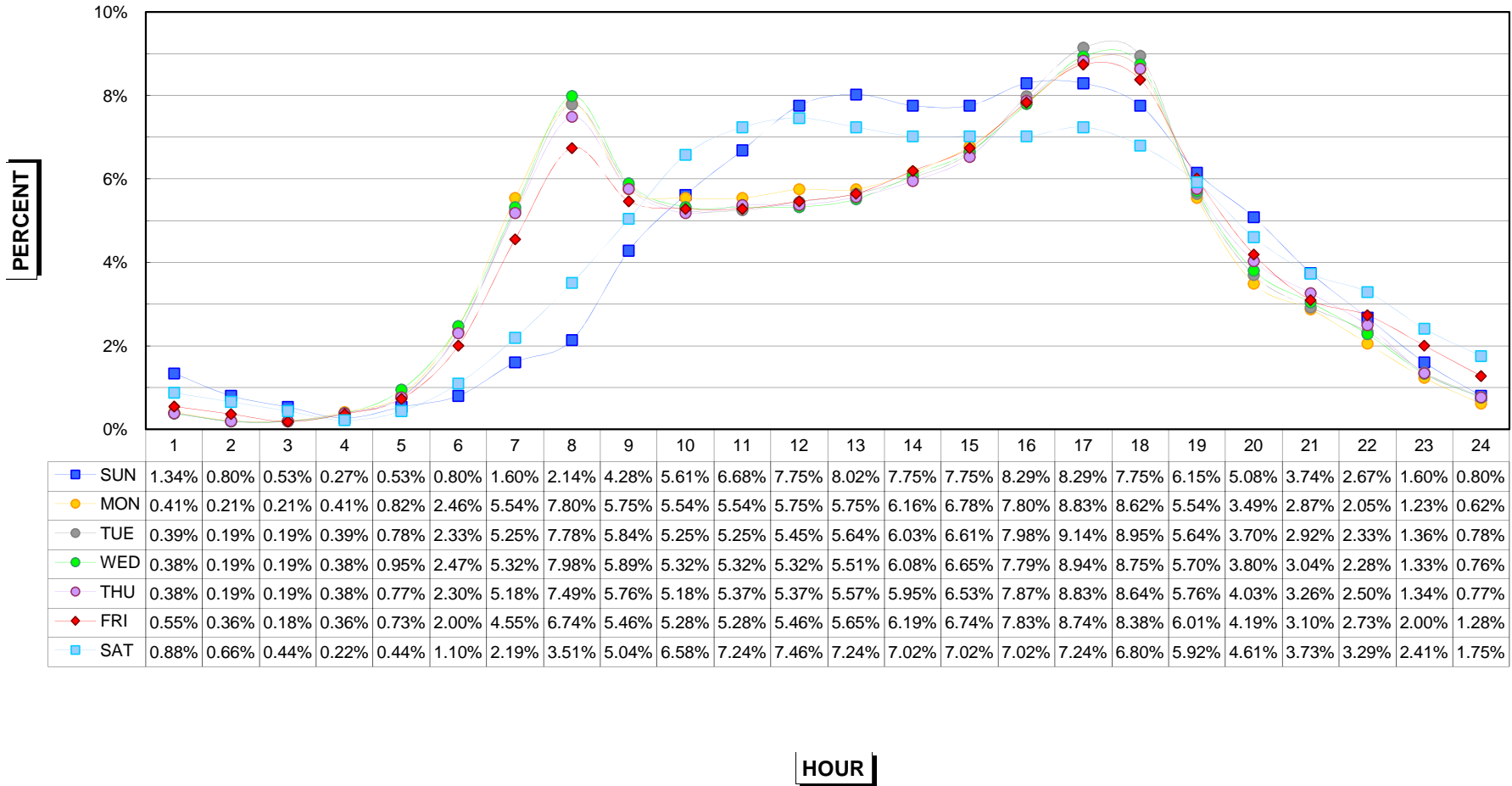
HOURLY DISTRIBUTION OF DAILY TRAFFIC 2010 RURAL INTERSTATE



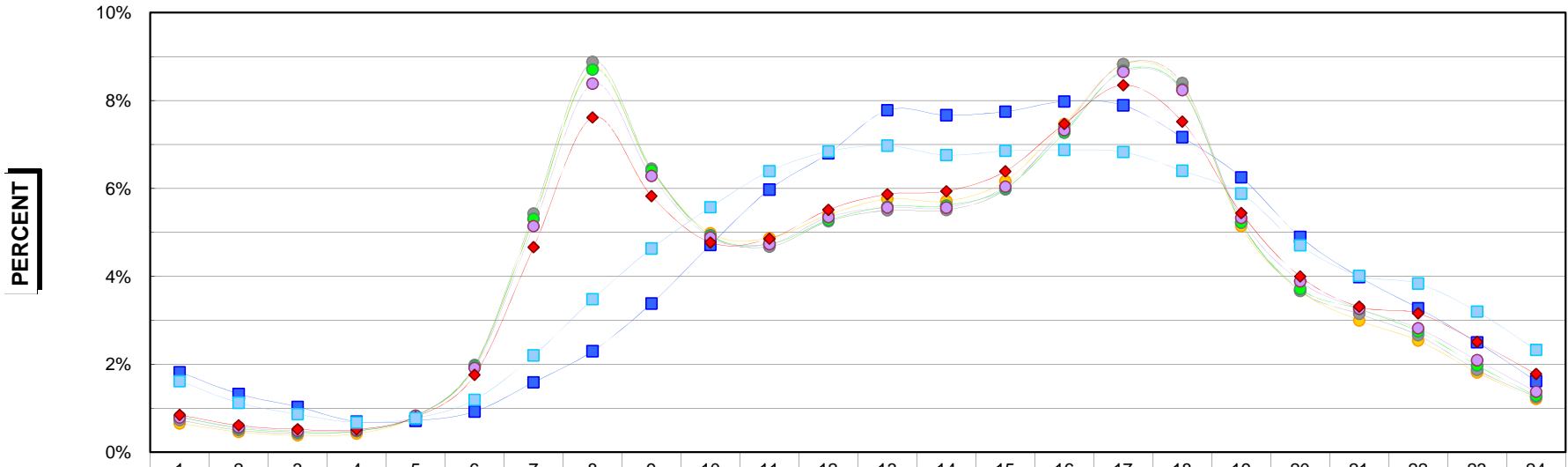
HOURLY DISTRIBUTION OF DAILY TRAFFIC 2010 RURAL PRIMARY



HOURLY DISTRIBUTION OF DAILY TRAFFIC 2010 RURAL SECONDARY



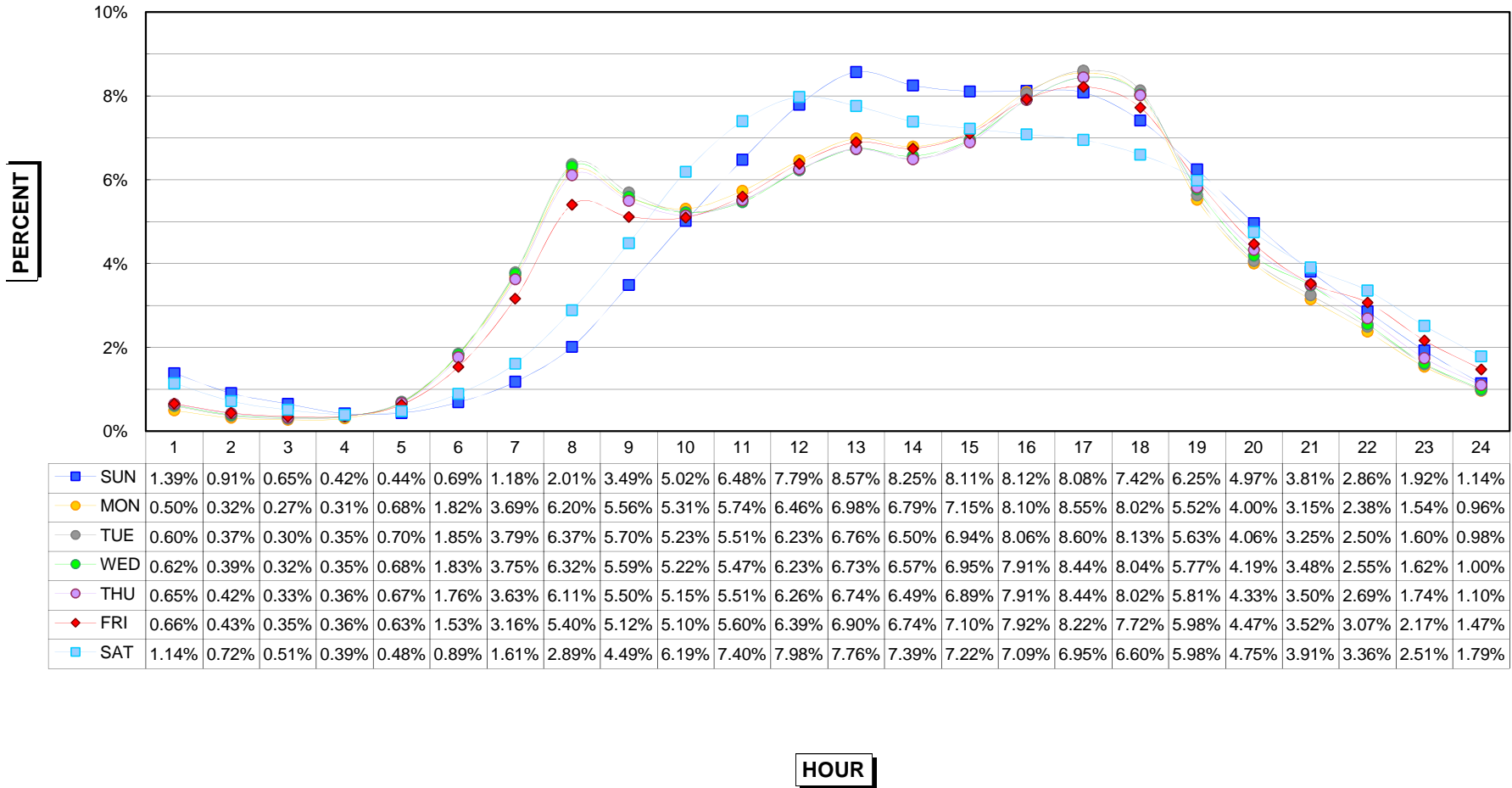
HOURLY DISTRIBUTION OF DAILY TRAFFIC 2010 MUNICIPAL INTERSTATE



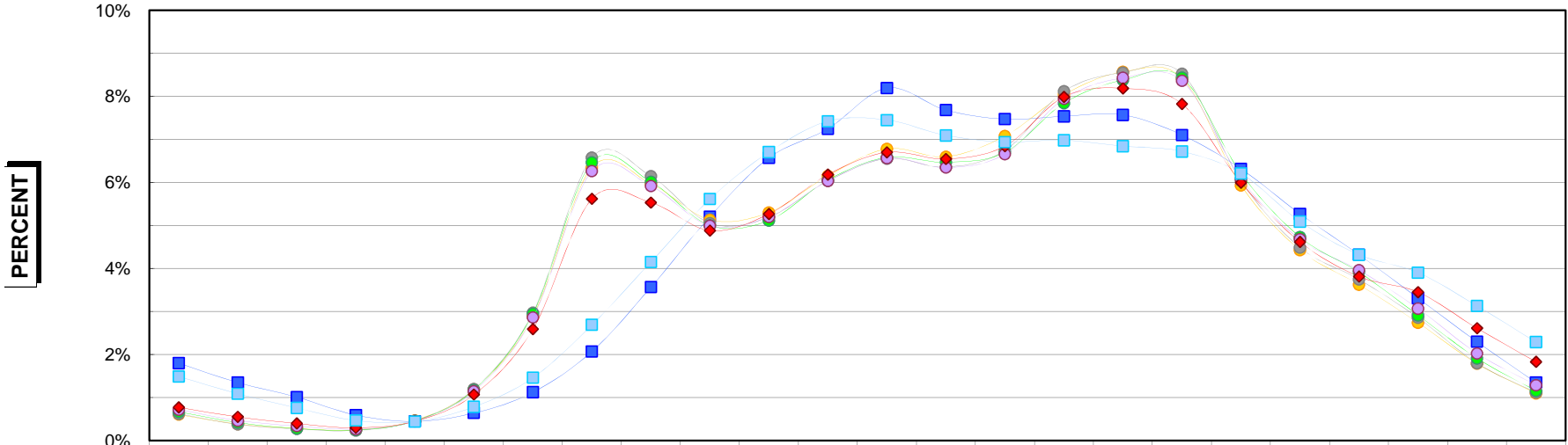
	1	2	3	4	5	6	7	8	9	10	11	12	13	14	15	16	17	18	19	20	21	22	23	24
SUN	1.82%	1.32%	1.03%	0.69%	0.71%	0.92%	1.59%	2.30%	3.38%	4.71%	5.97%	6.80%	7.78%	7.67%	7.75%	7.98%	7.89%	7.17%	6.25%	4.90%	3.98%	3.28%	2.50%	1.62%
MON	0.66%	0.46%	0.38%	0.42%	0.81%	1.95%	5.30%	8.73%	6.42%	4.98%	4.87%	5.39%	5.76%	5.71%	6.16%	7.47%	8.82%	8.33%	5.15%	3.68%	3.00%	2.54%	1.81%	1.21%
TUE	0.73%	0.50%	0.43%	0.48%	0.82%	1.98%	5.43%	8.88%	6.45%	4.94%	4.67%	5.25%	5.50%	5.51%	5.98%	7.40%	8.83%	8.40%	5.22%	3.67%	3.15%	2.66%	1.87%	1.25%
WED	0.80%	0.54%	0.46%	0.48%	0.82%	1.96%	5.31%	8.70%	6.41%	4.93%	4.74%	5.28%	5.59%	5.61%	6.00%	7.27%	8.68%	8.26%	5.22%	3.71%	3.26%	2.75%	1.97%	1.28%
THU	0.79%	0.57%	0.48%	0.50%	0.83%	1.92%	5.14%	8.38%	6.28%	4.88%	4.73%	5.35%	5.56%	5.56%	6.04%	7.32%	8.65%	8.24%	5.33%	3.89%	3.27%	2.82%	2.09%	1.37%
FRI	0.84%	0.61%	0.52%	0.52%	0.80%	1.76%	4.66%	7.61%	5.82%	4.77%	4.85%	5.51%	5.87%	5.94%	6.39%	7.47%	8.35%	7.52%	5.44%	4.00%	3.31%	3.16%	2.51%	1.78%
SAT	1.61%	1.12%	0.86%	0.67%	0.77%	1.19%	2.20%	3.48%	4.63%	5.57%	6.39%	6.84%	6.97%	6.76%	6.85%	6.88%	6.83%	6.40%	5.88%	4.70%	4.01%	3.84%	3.20%	2.33%

HOUR

HOURLY DISTRIBUTION OF DAILY TRAFFIC 2010 MUNICIPAL PRIMARY



HOURLY DISTRIBUTION OF DAILY TRAFFIC 2010 MUNICIPAL STREETS



	1	2	3	4	5	6	7	8	9	10	11	12	13	14	15	16	17	18	19	20	21	22	23	24
—■— SUN	1.80%	1.35%	1.01%	0.59%	0.45%	0.64%	1.12%	2.07%	3.57%	5.20%	6.57%	7.24%	8.19%	7.68%	7.47%	7.53%	7.57%	7.10%	6.31%	5.27%	4.32%	3.31%	2.30%	1.35%
—●— MON	0.60%	0.38%	0.28%	0.25%	0.47%	1.18%	2.88%	6.35%	5.96%	5.13%	5.30%	6.15%	6.78%	6.59%	7.07%	8.04%	8.57%	8.42%	5.93%	4.42%	3.62%	2.74%	1.79%	1.10%
—●— TUE	0.62%	0.38%	0.27%	0.23%	0.46%	1.20%	2.97%	6.58%	6.14%	5.05%	5.19%	6.04%	6.55%	6.35%	6.74%	8.11%	8.55%	8.53%	6.04%	4.49%	3.75%	2.85%	1.80%	1.12%
—●— WED	0.66%	0.42%	0.28%	0.24%	0.45%	1.18%	2.95%	6.46%	6.01%	5.00%	5.11%	6.05%	6.58%	6.46%	6.70%	7.84%	8.37%	8.43%	6.21%	4.73%	3.91%	2.91%	1.91%	1.15%
—●— THU	0.72%	0.46%	0.34%	0.27%	0.45%	1.15%	2.86%	6.26%	5.92%	4.99%	5.20%	6.03%	6.56%	6.34%	6.66%	7.94%	8.43%	8.36%	6.08%	4.68%	3.96%	3.07%	2.03%	1.29%
—◆— FRI	0.77%	0.55%	0.40%	0.30%	0.45%	1.07%	2.59%	5.62%	5.53%	4.88%	5.27%	6.18%	6.70%	6.54%	6.84%	7.99%	8.18%	7.82%	5.99%	4.62%	3.81%	3.45%	2.61%	1.83%
—■— SAT	1.49%	1.09%	0.76%	0.47%	0.44%	0.79%	1.46%	2.69%	4.15%	5.61%	6.70%	7.42%	7.45%	7.09%	6.94%	6.98%	6.84%	6.72%	6.21%	5.09%	4.32%	3.90%	3.13%	2.29%

HOUR

SUMMARY OF ANALYSIS

Analysis of the Thirtieth Highest Hour at the Permanent Continuous Automatic Traffic Recorder Stations 2001 - 2010

Permanent automatic traffic recorder data is collected on a continuing basis in Iowa to facilitate the expansion of the short-time manual and portable recorder traffic counts to Annual Average Daily Traffic and to make possible a means of estimating design hour volumes from the Annual Average Daily Traffic. A record of the 50 highest hourly volumes at each rural automatic recorder station has been kept since 1949, and at each urban station since 1959, making possible the fitting of first degree curves to desired design hours periodically as the data has been accumulated.

From permanent automatic traffic recorder data a straight-line relationship between the design hour volume and the Annual Average Daily Traffic can be expressed mathematically as:

$$Y = a + bx$$

Where Y = nth high hour volume (design hour)

x = Annual Average Daily Traffic

a = A constant of minimum relationship

b = The slope relationship which can be expressed as a percentage of the Annual Average Daily Traffic

The constant "a" and the relationship "b" have been recomputed for the 30th highest hour as the data for each succeeding year has become available. Table 1 shows the 30th high hour results computed from data collected over a ten-year period, 2001 through 2010.

Table 1

Calculations of Design Hour Volumes (30th high hour) From Annual Average Daily Traffic

	PRIMARY		INTERSTATE		SECONDARY		CITY STREET	
	"a" Constant	"b" %AADT	"a" Constant	"b" %AADT	"a" Constant	"b" %AADT	"a" Constant	"b" %AADT
Rural	9.15	10.75	346.47	9.78	5.27	12.10	-	-
Municipal	66.10	9.77	244.33	9.78	-	-	62.35	9.80

**ANNUAL AVERAGE DAILY TRAFFIC BY STATIONS FOR THE YEARS 2000 TO 2010
RURAL INTERSTATE**

STATION	ROUTE	LOCATION	2000	2001	2002	2003	2004	2005	2006	2007	2008	2009	2010
100	I 29	3.0 MI N OF S JCT I 680 HONEY CREEK	20202	20192	21070	20906	21319	20959	21484	21033	20246	20170	20593
102	I 29	4.0 MI S OF US 34 PACIFIC JCT	11221	11402	11917	12010	12101	12151	12495	12300	11793	11761	11868
103	I 80	5.0 MI E OF IA 146 GRINNELL	26178	26249	27346	26917	26726	26325	26940	26853	26118	26234	26569
104	I 35	3.0 MI N OF IA 175 JEWELL	17547	17848	18596	18996	20269	20200	20629	20598	20147	20509	NO AADT
105	I 29	3.8 MI S OF IA 175 ONAWA	11016	11092	11346	12031	12171	12015	12283	12418	12096	12512	12791
106	I 35	1.5 MI N OF IA 2 LEON	12486	12659	13234	13265	13233	12982	13290	13227	12705	12715	12786
109	I 35	3.0 MI N OF CO B20 HANLONTOWN	15221	15880	16575	17046	17556	17373	18466	18611	17794	18757	19118
110	I 80	1.5 MI W OF CO M16 SHELBY	21441	21468	22379	22254	22496	22208	22670	22752	21727	22189	22950
111	I 80	2.0 MI E OF IA 149 WILLIAMSBURG	29808	29952	31092	31021	31258	30939	31347	31325	29718	29950	NO AADT
113	I 380	3.75 MI NW OF IA 150 BRANDON	12029	12224	12934	13422	14156	14308	14695	14976	14648	15084	15665
115	I 80	2.0 MI E OF US 71 ATLANTIC	18339	18377	19018	19013	19324	19282	19480	19697	19267	19067	19879
116	I 80	0.8 MI W OF 74TH ST WAUKEE	34507	32492	34059	33413	33870	33880	35190	34897	33977	34437	35427
117	I 80	1.75 MI E OF E JCT I 35/80/235 ALTOONA	60851	62242	65755	66846	69050	70547	70362	68589	67650	69757	72678
119	I 80	1.5 MI E OF MIDDLE RD LECLAIRE		25685	28206	29720	29201	28264	28926	28639	27436	27398	NO AADT
120	I 80	2.5 MI E OF CO RD X40 TIPTON	29329	30323	31234	31513	32318	32239	32583	32755	31284	31386	32327
121	I 35	2.0 MI N OF CO RD R75 DOWS						13800	14112	13858	13376	13822	NO AADT
122	I 35	1.0 MI N OF IA 92 CUMMING									21255	21339	21205
123	I 80	4.8 MI E OF E JCT US 65 MITCHELLVILLE											35329
124	I 680	6.4 MI W OF I 80 BEEBETOWN											6196

**2010 EXPANSION FACTORS
RURAL INTERSTATE**

	<u>SUN</u>	<u>MON</u>	<u>TUE</u>	<u>WED</u>	<u>THU</u>	<u>FRI</u>	<u>SAT</u>
JAN	1.287	1.351	1.276	1.276	1.284	1.051	1.257
FEB	1.349	1.348	1.281	1.193	1.128	0.998	1.203
MAR	1.004	1.128	1.119	1.054	0.995	0.840	1.054
APR	0.987	1.078	1.108	1.066	0.984	0.828	1.065
MAY	0.951	0.994	1.055	1.009	0.918	0.775	0.960
JUN	0.867	0.961	0.994	0.945	0.880	0.760	0.929
JUL	0.820	0.908	0.956	0.904	0.815	0.741	0.904
AUG	0.827	0.937	0.957	0.907	0.856	0.736	0.857
SEP	0.931	0.990	1.067	1.032	0.954	0.767	0.973
OCT	0.923	1.068	1.102	1.044	0.978	0.807	1.034
NOV	0.928	1.151	1.099	0.947	1.035	0.890	1.014
DEC	1.173	1.137	1.159	1.153	1.167	1.108	1.263

**ANNUAL AVERAGE DAILY TRAFFIC BY STATIONS FOR THE YEARS 2000 TO 2010
MUNICIPAL INTERSTATE**

STATION	ROUTE	LOCATION	2000	2001	2002	2003	2004	2005	2006	2007	2008	2009	2010
701	I 380	BTWN WILSON AND 33RD CEDAR RAPIDS	60803	61973	63391	63338	64289	64150	64968	64650	63791	65296	66377
703	I 380	AT J AVE S OF COLDSTREAM CEDAR RAPIDS	78969	79802	81023	81222	82356	81384	82503	82450	80922	80465	84299
704	I 29/80	0.6 MI W OF IA 192 COUNCIL BLUFFS	69496	70860	76024	74081	75623	77569	79350	79516	76838	75586	75988
705	I 74	0.6 MI S OF US 6 BETTENDORF	43683	47438	48380	48022	47671	48031	49099	48849	48427	47738	NO AADT
707	I 29	AT SOUTH DAKOTA BORDER SIOUX CITY								28070	27931	28175	NO AADT
708	I 280	0.3 MI S OF IA 22 DAVENPORT											NO AADT
709	I 35	N OF ORALABOR ROAD ANKENY											NO AADT
710	I 235	E. INNERLEG OF 35TH ST WEST DES MOINES											*NO AADT
711	I 235	S OF GUTHRIE AVENUE DES MOINES											66548
712	I 235	E OF SECOND AVENUE DES MOINES											NO AADT
713	I 35/80	E OF MERLE HAY ROAD DES MOINES											NO AADT

NOTE: 2010 data from Site 710 was erased in January, 2011 due to data falling outside of tolerances.

**2010 EXPANSION FACTORS
MUNICIPAL INTERSTATE**

	SUN	MON	TUE	WED	THU	FRI	SAT
JAN	1.485	1.156	1.112	1.095	1.110	1.005	1.182
FEB	1.620	1.100	1.055	1.037	0.980	0.936	1.233
MAR	1.416	1.010	0.982	0.948	0.941	0.888	1.176
APR	1.493	0.924	0.900	0.885	0.878	0.857	1.259
MAY	1.296	1.025	0.931	0.914	0.886	0.835	1.103
JUN	1.257	0.930	0.934	0.899	0.877	0.840	1.116
JUL	1.266	0.951	0.916	0.897	0.858	0.869	1.160
AUG	1.245	0.926	0.918	0.898	0.877	0.830	1.086
SEP	1.281	1.017	0.921	0.902	0.886	0.822	1.107
OCT	1.285	0.956	0.942	0.918	0.907	0.836	1.140
NOV	1.238	1.022	1.008	0.950	1.069	0.898	1.083
DEC	1.368	1.047	1.050	1.043	1.081	1.067	1.204

**ANNUAL AVERAGE DAILY TRAFFIC BY STATIONS FOR THE YEARS 2000 TO 2010
RURAL PRIMARY**

STATION	ROUTE	LOCATION	2000	2001	2002	2003	2004	2005	2006	2007	2008	2009	2010
201	US 65	2.7 MI N OF IA 3 HAMPTON	2958	2869	3005	2981	2959	2886	2831	2808	2777	2824	NO AADT
202	US 71	2.0 MI N OF IA 44 HAMLIN	3238	3162	3458	3416	3544	3504	3450	3473	3375	3393	3537
204	US 75	1.3 MI N OF CO C60 HINTON	9960	10003	11049	11440	11718	12095	12296	12264	12302	12671	12918
205	US 218	2.7 MI S OF IA 78 SWEDESBERG	8144	8930	9346	9671	10174	10375	10831	11292	11063	11484	11812
206	US 30	AT BOONE/STORY CO LINE NAPIER	10431	10920	11746	12011	12366	12760	12793	12929	13039	13356	13578
207	US 18	2.2 MI E OF US 169 ALGONA	3158	3220	3363	3353	3381	3332	3306	3449	3226	3326	3377
208	US 6	3.0 MI E OF CO V66 MARENGO	3386	3404	3511	3437	3466	3344	3256	3157	3113	3153	3256
209	US 67	1.5 MI S OF CO F45 PRINCETON	4575	4436	4380	4305	4433	4471	4424	4372	4181	4132	NO AADT
210	US 18	4.2 MI E OF IA 60 SHELDON	3702	3736	3771	3776	3939	4066	4061	4066	4053	4120	4213
211	US 20	2.8 MI E OF CO N57 ROCKWELL CITY	2845	2862	2929	2984	3152	3099	3138	3111	3087	3155	3292
212	IA 92	0.6 MI W OF CO V45 SIGOURNEY	2832	2849	2868	2821	2792	2753	2731	2684	2554	2602	2632
213	US 30	1.8 MI E OF US 65 COLO	5753	5765	5988	5431	5332	5074	5105	5058	4908	5047	NO AADT
214	US 61	3.8 MI N OF US 34 BURLINGTON	7275	7101	7234	7200	7183	7097	7050	6985	6953	6814	6635
216	US 34/169	2.5 MI E OF W JCT US 169 AFTON	3647	3651	3690	3913	3835	3654	3696	3671	3537	3665	3870
217	US 18	2.5 MI E OF I 35 CLEAR LAKE	13978	14089	14615	14916	14876	15140	14373	14364	14173	14489	NO AADT
218	IA 44	0.2 MI W OF US 169 ADEL	3478	3466	3528	3645	3707	3646	3645	3444	3396	3406	3457
219	US 34	1.0 MI W OF I 35 OSCEOLA	4675	4618	4650	4742	4762	4724	4724	4702	4575	4624	4711
220	US 52	1.0 MI NW OF US 18 POSTVILLE	1656	1698	1793	1746	1746	1757	1715	1658	1578	1609	1676
221	IA 9	2.5 MI W OF CO N52 ARMSTRONG	1780	1750	1760	1748	1768	1703	1678	1690	1592	1631	NO AADT
222	IA 3	0.1 MI W OF CO P66 HUMBOLDT	2483	2443	2323	2235	2183	1989	1956	1919	1844	1793	1917
223	IA 48	4.0 MI S OF IA 92 GRISWOLD	1366	1306	1309	1297	1209	1238	1248	1221	1171	1164	1190
224	US 59	0.5 MI S OF CO F16 DEFIANCE	2552	2572	2577	2557	2635	2644	2613	2561	2507	2590	2638
226	US 18	3.8 MI E OF CO W14 WEST UNION	2539	2380	2385	2431	2358	2292	2357	2339	2197	2291	2269
228	IA 117	2.5 MI S OF US 65 MINGO	958	965	1189	946	948	967	993	986	979	993	951
229	IA 78	1.2 MI W OF CO X23 WINFIELD	813	829	798	775	733	757	785	742	738	748	750
230	US 169	3.5 MI S OF S JCT IA 92 WINTERSET	2032	1858	1770	1837	1795	1701	1726	1610	1588	1651	1686
231	IA 148	9.3 MI N OF IA 92 ANITA	812	769	761	756	776	756	782	761	755	763	NO AADT
233	IA 110	1.5 MI S OF CO C65 SCHALLER	1284	1299	1299	1301	1337	1318	1260	1294	1298	1306	NO AADT
234	IA 12	2.5 MI N OF CO K18 AKRON	1637	1589	1555	1548	1469	1465	1435	1415	1304	1277	1342
235	IA 143	3.4 MI S OF IA 10 MARCUS	821	831	825	800	795	826	825	802	765	746	785
236	IA 196	3.0 MI S OF US 20 SAC CITY	1079	1106	1109	1082	1094	1037	1060	1082	1088	1131	1169
238	IA 149	2.1 MI N OF IA 78 MARTINSBURG	1014	1096	1153	1175	1216	1158	1153	1132	1071	1102	1180
240	IA 2	3.0 MI E OF US 275 SIDNEY	1840	1841	1882	1887	1936	1857	1879	1949	1914	1772	1899
241	IA 13	5.0 MI S OF US 20 RYAN	5058	5118	5048	4979	4694	4408	4460	4280	4034	4069	4270
242	US 61	3.8 MI N OF CO F41 ELDRIDGE	14483	15108	15911	16104	16459	16082	16214	15940	16374	16748	
243	US 30	0.3 MI E OF CO Z24 DEWITT	8477	8723	9222	9295	9413	9488	9124	9448	9408	9678	9841
244	IA 1	0.8 MI S OF CO F67 KALONA	5798	5804	5948	5950	5969	5956	5858	5624	5765	5694	5566
245	US 20	1.5 MI E OF CO V62 JESUP	9115	9185	9538	10032	10392	10194	10345	10571	10532	10789	11025
246	IA 141	1.0 MI E OF WILLIS AVE PERRY	9598	9630	9805	9785	9940	9806	9676	9448	9315	9478	9556
247	US 20	3.0 MI E OF E JCT IA 17 WEBSTER CITY	6560	6685	6848	6995	7827	7958	7888	7945	7858	7834	NO AADT
248	IA 21	2.8 MI N OF US 6 BELLE PLAINE	1248	1260	1297	1283	1318	1270	1246	1193	1120	1135	1148
249	US 218	0.5 MI N OF HILLS INTERCHANGE HILLS		15447	16116	16404	16852	16973	18313	19527	18686	19548	19804
250	US 65	1.5 MI N OF IA 163 PLEASANT HILL	16724	18451	20559	22221	23923	25288	25274	24416	23942	24223	24789
252	US 18/63	0.5 MI S OF CO B54 NEW HAMPTON						4803	4780	4831	4797	4909	5091
253	US 218	3.5 MI S OF CO T64 CHARLES CITY						8316	8436	8649	8542	8643	NO AADT
254	IA 60	4.1 MI N OF IA 9 SIBLEY										3296	3378
255	US 20	1.0 MI E OF US 65 IOWA FALLS						7531	7926	8057	8148	8335	8548
256	US 18	3.3 MI E OF I 35 MASON CITY						7066	7290	7507	7342	7612	7878
257	US 20	3.6 MI W OF W JCT US 59 HOLSTEIN								2781	2881	2926	2954
258	US 30	0.6 MI E OF CO V66 BLAIRSTOWN								6424	5940	NO AADT	NO AADT
259	US 30	3.5 MI E OF IA 1 LISBON									5427	5610	5753
260	US 71	0.6 MI S OF CO J64 BRADDYVILLE								2182	2240	2301	2377
261	US 169	2.3 MI N OF CO D14 FORT DODGE								5783	5360	5389	NO AADT
262	US 63	1.6 MI S OF IA 2 BLOOMFIELD								2247	2217	2288	2318
263	US 52	0.3 MI E OF CO X47 GARNAVILLO								2395	2225	2267	NO AADT
264	IA 27	3.0 MI S OF CO W62 ARGYLE								4532	4764	5079	5402
265	US 61	1.0 MI N OF CO E17 MAQUOKETA								7349	7053	7236	7475
266	IA 2	0.8 MI W OF US 63 WEST GROVE								1560	1546	1535	1596
267	US 34	3.0 MI W OF US 59 EMERSON								4176	4168	4380	4476
268	US 30	4.0 MI SW OF CO M14 DOW CITY								2997	2977	3022	NO AADT
269	US 30	3.6 MI E OF IA 144 GRAND JUNCTION								4137	4320	4359	
270	US 71	3.1 MI S OF IA 3 STORM LAKE									2441	2594	
271	US 18	4.3 MI E OF IA 4 EMMETSBURG									3111	3218	3386
272	US 71	5.2 MI S OF W JCT US 6 ATLANTIC									2112	2228	NO AADT
273	US 34	3.6 MI E OF CO RD S56 RUSSELL									2109	2073	
274	IA 163	2.6 MI NW OF CO RD G28 PELLA								9872	10331	10795	
275	US 20	0.5 MI W OF CENTER AVE EPWORTH									12096	12376	
276	US 63	1.5 MI N OF IA 9 LIME SPRINGS									2870	2961	
277	US 34	1.1 MI E OF IA 16 AGENCY									7804	7792	
278	IA 141	0.5 MI N OF IA 44 GRIMES									20594	20395	
279	IA 13	1.5 MI N OF CO RD C64 DUNDEE									2311	2344	
280	IA 2	2.0 MI W OF I 35 LEON										1303	
281	US 151	4.4 MI S OF IA 38 MONTICELLO										10635	
282	US 52	9.5 MI S OF IA 62 BELLEVUE											NO AADT
283	US 61/218	0.8 MI S OF N JCT US 61/218 KEOKUK										7810	
284	IA 9	1.0 MI W OF 6TH STREET LANSING										2163	

**2010 EXPANSION FACTORS
RURAL PRIMARY**

	SUN	MON	TUE	WED	THU	FRI	SAT
JAN	1.551	1.142	1.119	1.131	1.161	0.995	1.230
FEB	1.579	1.181	1.114	1.069	1.025	0.930	1.141
MAR	1.308	1.043	1.022	0.993	0.971	0.876	1.108
APR	1.239	0.968	0.954	0.948	0.921	0.829	1.042
MAY	1.084	0.971	0.949	0.936	0.893	0.787	0.951
JUN	1.085	0.928	0.934	0.914	0.886	0.797	0.985
JUL	1.063	0.945	0.935	0.911	0.861	0.806	0.991
AUG	1.069	0.947	0.941	0.921	0.894	0.792	0.977
SEP	1.109	0.984	0.954	0.952	0.911	0.783	0.992
OCT	1.162	0.978	0.979	0.965	0.933	0.813	1.017
NOV	1.253	0.997	0.986	0.939	0.992	0.872	1.075
DEC	1.461	1.043	1.066	1.093	1.077	1.056	1.276

**ANNUAL AVERAGE DAILY TRAFFIC BY STATIONS FOR THE YEARS 2000 TO 2010
MUNICIPAL PRIMARY**

STATION	ROUTE	LOCATION	2000	2001	2002	2003	2004	2005	2006	2007	2008	2009	2010
802	US 71	W OF MEMPHIS AVE SPIRIT LAKE	12667	12948	12038	11884	12408	12408	12102	11721	11530	11961	11827
803	IA 12	ON VIADUCT E OF COURT ST SIOUX CITY	26772	27293	26866	26579	25631	25518	23924	23112	22228	NO AADT	NO AADT
804	IA 4	N OF 4TH AVE NW POCAHONTAS	3059	3049	3019	2962	3012	3052	3082	3012	2950	2868	2965
805	IA 148	S OF 11TH ST CORNING	3256	3208	3325	3230	3223	3098	3202	3046	2852	2867	2811
806	US 6	E OF SHASTA WINDSOR HEIGHTS	22199	21766	21952	21382	22129	22989	21425	19954	19072	19481	NO AADT
808	US 71	S OF BIRCH ST AUDUBON	5177	4592	4811	4757	4992	4858	4750	4701	4655	4769	NO AADT
809	IA 14	N OF WOODLAND ST MARSHALLTOWN	6729	6401	6636	6604	6540	6484	6268	6304	6164	6119	6228
810	IA 92	W OF N ST INDIANOLA	10513	11077	11793	11634	11725	11582	11203	10858	10837	11024	11061
811	IA 192	S OF AVE N COUNCIL BLUFFS	10474	10792	10061	9665	9442	9474	9047	8858	9139	9057	8718
812	IA 122	W OF VIRGINIA AVE MASON CITY	12925	13941	13489	13326	13052	12706	12014	12035	11825	12186	11450
813	US 6	E OF PINE ST DAVENPORT	20440	20584	19789	19891	21888	22078	21648	22022	21686	21312	21935
815	IA 922	BTWN WILEY BLVD & WESTDALE CDR RPDS	8044	8249	8560	8783	9027	9006	9474	9565	9551	10812	10940
816	US 34	W OF US 61 WEST BURLINGTON	13015	13036	13162	13096	13085	12814	13878	13666	13097	13168	13671
819	IA 9	EAST OF 14TH ST OSAGE	6750	6024	5857	5627	5546	5536	5391	5374	5264	5237	5262
820	IA 17	N OF NW 11TH ST EAGLE GROVE	3443	3151	2970	2934	2902	2997	2867	2818	2739	2722	2832
821	IA 4	S OF EDGEWOOD AVE E JEFFERSON	4548	4405	4285	4206	4343	4211	4166	4102	4074	4154	4138
823	US 6	BETWEEN SYCAMORE & 1ST AVE IOWA CITY	20968	21027	21564	21677	21858	21726	21526	21187	20946	20652	20543
824	US 69	BETWEEN 15TH AND 16TH ST AMES	19214	19331	19624	19394	19737	20080	19804	19440	17551	17318	18148
826	US 65	1.5 MI NE OF I-80 BONDURANT	10710	10863	11068	11293	11824	12737	12397	12052	11761	12272	12608
827	US 61/151	W OF MISSISSIPPI R DUBUQUE	18133	18270	18716	19036	19188	19238	19396	20588	20031	20744	21554
828	IA 150	S OF 12TH ST OELWEIN	6840	6652	6600	6470	6555	6505	6654	6298	6295	6461	6550
829	US 59	S OF 5TH AVE SHENANDOAH	10383	9688	9842	9697	9964	10054	10053	9698	9121	8694	8819
830	IA 23	S OF IA 92 OSKALOOSA			3622	3506	3279	3204	3159	3073	2951	2871	2866
831	IA 5	W OF FLUER DRIVE DES MOINES											NO AADT

**2010 EXPANSION FACTORS
MUNICIPAL PRIMARY**

	SUN	MON	TUE	WED	THU	ERI	SAT
JAN	1.636	1.095	1.100	1.081	1.125	0.996	1.251
FEB	1.644	1.123	1.069	1.029	1.006	0.928	1.168
MAR	1.445	1.004	0.988	0.969	0.962	0.889	1.130
APR	1.368	0.947	0.925	0.912	0.914	0.835	1.034
MAY	1.208	0.978	0.912	0.897	0.882	0.802	0.960
JUN	1.238	0.911	0.905	0.887	0.881	0.813	1.002
JUL	1.252	0.946	0.910	0.898	0.876	0.857	1.046
AUG	1.266	0.923	0.917	0.906	0.899	0.827	1.028
SEP	1.287	1.006	0.915	0.907	0.897	0.807	1.042
OCT	1.328	0.951	0.940	0.926	0.918	0.827	1.057
NOV	1.423	0.966	0.955	0.933	1.040	0.894	1.132
DEC	1.556	1.009	1.023	1.040	1.053	1.029	1.268

ANNUAL AVERAGE DAILY TRAFFIC BY STATIONS FOR THE YEARS 2000 TO 2010

SECONDARY

PAVED

STATION	ROUTE	LOCATION	2000	2001	2002	2003	2004	2005	2006	2007	2008	2009	2010
300	CO P14	2.7 MI N OF CO E33 CHURDAN	294	288	292	286	303	296	303	250	237	247	239
301	CO S14	0.8 MI S OF CO E29 NEVADA	964	931	1005	985	1001	979	1008	989	975	973	958
302	CO M55	0.2 MI N OF IA 141 MANILLA	943	975	936	875	845	824	830	783	739	736	739
303	CO K45	2.25 MI S OF IA 175 ONAWA	1138	1107	1115	1075	1005	1025	1029	1059	1106	1152	NO AADT
304	CO V45	3.5 MI N OF IA 92 SIGOURNEY	623	572	599	614	643	640	645	634	617	636	665
306	CO E53	1.75 MI E OF IA 25 SCRANTON	558	568	625	595	575	579	570	515	520	544	NO AADT
307	CO R38	2.2 MI N OF CO C54 CLARION	1230	1257	1308	1309	1341	1292	1361	1293	1255	1240	1278
308	CO N32	1.6 MI N OF IA 9 ESTHERVILLE	369	353	360	360	361	361	370	341	330	357	NO AADT
309	CO K52	1.5 MI S OF US 18 HULL	959	972	998	992	999	974	1017	987	1001	1063	NO AADT
310	CO Y52	1.5 MI S OF US 30 GRAND MOUND	526	518	533	531	529	529	534	504	479	501	NO AADT
311	CO W12	3.5 MI S OF US 30 WATKINS	758	800	861	847	864	835	852	853	804	825	NO AADT
312	CO E26	2.7 MI W OF CO RD R38 BOONE	1386	1364	1405	1383	1406	1336	1370	1327	1213	1269	1395
313	CO D42	0.2 MI E OF IA 13 MANCHESTER	675	682	734	746	707	715	719	698	679	691	702
314	CO 105	1.3 MI E OF CO S56 NORTHWOOD	697	675	647	638	667	675	766	771	775	778	800
315	CO RD	5.5 MI E OF US 63 DRAKESVILLE	706	706	721	734	712	722	733	720	656	676	675

GRAVEL

STATION	ROUTE	LOCATION	2000	2001	2002	2003	2004	2005	2006	2007	2008	2009	2010
400	CO B30	0.5 MI E OF CO L48 PRIMGHAR	22	24	26	27	28	26	29	27	21	23	21
401	LOC RD	1.75 MI N OF CO E36 CLUTIER	29	36	33	36	52	32	33	35	31	30	36
402	LOC RD	0.75 MI E OF CO V18 CLUTIER	39	38	38	40	51	42	50	50	41	47	51
403	CO H47	5.0 MI SE OF US 34 ALBIA	75	77	91	103	115	109	111	102	88	98	89
405	LOC RD	2.5 MI N OF US 18 NEW HAMPTON	54	43	60	57	56	47	55	55	46	48	46
406	LOC RD	2.0 MI E OF US 169 LORIMOR	80	73	68	67	76	71	67	70	57	63	62
407	CO H23	2.0 MI E OF US 169 LORIMOR	69	62	62	73	75	81	77	76	68	70	75

**2010 EXPANSION FACTORS
SECONDARY**

	SUN	MON	TUE	WED	THU	FRI	SAT
JAN	1.777	1.306	1.279	1.262	1.327	1.161	1.450
FEB	1.882	1.390	1.288	1.189	1.177	1.090	1.364
MAR	1.508	1.144	1.090	1.036	1.074	0.993	1.244
APR	1.360	0.951	0.939	0.896	0.916	0.871	1.055
MAY	1.115	0.891	0.868	0.848	0.858	0.818	0.930
JUN	1.246	0.905	0.883	0.861	0.861	0.840	1.024
JUL	1.224	0.939	0.904	0.873	0.876	0.876	1.029
AUG	1.271	0.919	0.906	0.893	0.893	0.859	1.019
SEP	1.221	0.977	0.887	0.869	0.878	0.846	1.025
OCT	1.119	0.857	0.863	0.859	0.872	0.808	0.911
NOV	1.293	0.874	0.878	0.859	0.934	0.841	0.969
DEC	1.636	1.129	1.135	1.139	1.154	1.190	1.327

**ANNUAL AVERAGE DAILY TRAFFIC BY STATIONS FOR THE YEARS 2000 TO 2010
MUNICIPAL STREETS**

STATION	ROUTE	LOCATION	2000	2001	2002	2003	2004	2005	2006	2007	2008	2009	2010
900	LAKE ST	N OF 3RD ST in STORM LAKE	3508	3502	3266	3128	3046	2911	2818	2872	2756	2848	2811
901	2ND AVE N	E OF 15TH ST in FORT DODGE	7211	7368	6681	6471	6795	6780	6695	6760	6775	6665	6728
902	LOCUST ST	E OF SPRING ST in DAVENPORT	22415	22498	23162	22986	22382	22369	21934	21750	21300	20726	20521
903	JEFFERSON	NE OF E 5TH ST in OTTUMWA	6678	6768	6935	6862	6901	6549	6627	6456	6272	6006	5694
904	JOHNSON	W OF JANICE DR in CEDAR RAPIDS	9821	10174	9499	10202	10381	10360	10086	9947	10000	9818	9613
905	N'WESTERN	N OF 20TH ST in AMES	2727	2741	2791	2797	2652	2460	2348	2304	2202	2264	NO AADT
906	DUBUQUE	S OF DAVENPORT ST in IOWA CITY	15324	15899	16201	15593	15615	15177	15448	15230	14688	14411	14245
907	COLLEGE	S OF 23RD ST in CEDAR FALLS	9564	9973	9272	9036	8440	7947	7862	7444	NO AADT	NO AADT	NO AADT
908	LINDWOOD	S OF 35TH ST in SIOUX CITY	1193	1139	1171	1134	1129	1056	1026	1008	969	977	954
909	HAMILTON	N OF CLIFTON AVE in SIOUX CITY	15280	15448	15596	15335	14789	14529	14547	14314	13854	14159	14586
910	GRANDVIEW	SE OF PLYMOUTH CT in DUBUQUE	8973	9090	9218	9272	9402	9094	8836	8779	8596	8871	8946
911	HUMBOLDT	S OF 4TH ST in BODE	886	898	869	794	773	796	796	786	776	770	767
912	ELM ST	N OF LUCAS ST in CRESTON	4066	4024	4054	4081	4422	4126	3938	3710	3798	3807	3782
** 913	WASHINGTON	E OF HARRISON ST in MOUNT PLEASANT	14866	14032	13998	13942	13728	12834	11283	10632	10540	10161	NO AADT

Note: Station 913 was previously site 801.
Washington Street was US 34 until Nov. 2005 when the US 34 bypass opened.

**2010 EXPANSION FACTORS
MUNICIPAL STREETS**

	SUN	MON	TUE	WED	THU	FRI	SAT
JAN	1.597	1.093	1.082	1.082	1.102	1.007	1.305
FEB	1.561	1.096	1.032	1.004	0.994	0.921	1.212
MAR	1.412	0.987	0.976	0.948	0.953	0.901	1.183
APR	1.334	0.936	0.910	0.892	0.897	0.839	1.065
MAY	1.211	0.962	0.891	0.879	0.868	0.809	1.000
JUN	1.275	0.900	0.889	0.883	0.877	0.833	1.055
JUL	1.284	0.956	0.911	0.912	0.890	0.886	1.100
AUG	1.285	0.928	0.921	0.922	0.909	0.856	1.079
SEP	1.282	1.009	0.906	0.898	0.891	0.832	1.089
OCT	1.299	0.952	0.933	0.923	0.915	0.841	1.080
NOV	1.379	0.949	0.936	0.925	1.050	0.922	1.174
DEC	1.532	1.021	1.029	1.041	1.062	1.031	1.307

ANNUAL AVERAGE DAILY TRAFFIC BY STATIONS FOR THE YEARS 2000 TO 2010

RECREATIONAL

PRIMARY

STATION	ROUTE	LOCATION	2000	2001	2002	2003	2004	2005	2006	2007	2008	2009	2010
500	US 71	0.1 MI S OF CO RD B14 FOSTORIA	8197	8178	8174	8358	8497	8263	8343	8346	7877	8067	8213
501	IA 5	3.8 MI S OF US 34 MORAVIA	3292	3328	3437	3492	3650	3644	3765	3745	3692	3922	3910
503	IA 415	0.5 MI W OF NW POLK CITY RD POLK CITY	4531	4344	4544	4926	5541	5789	5870	5162	5293	6076	NO AADT

SECONDARY

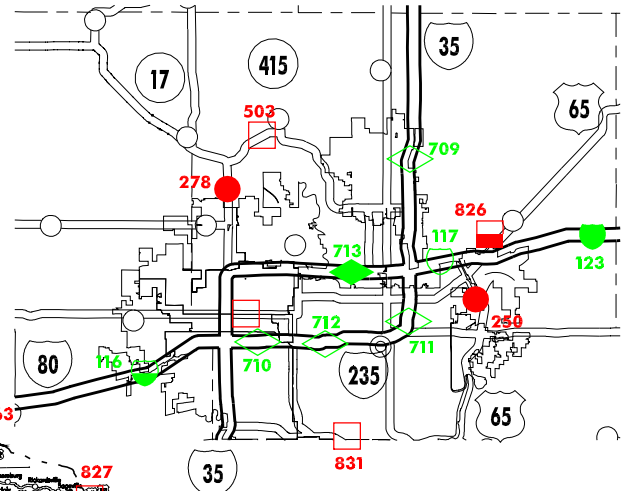
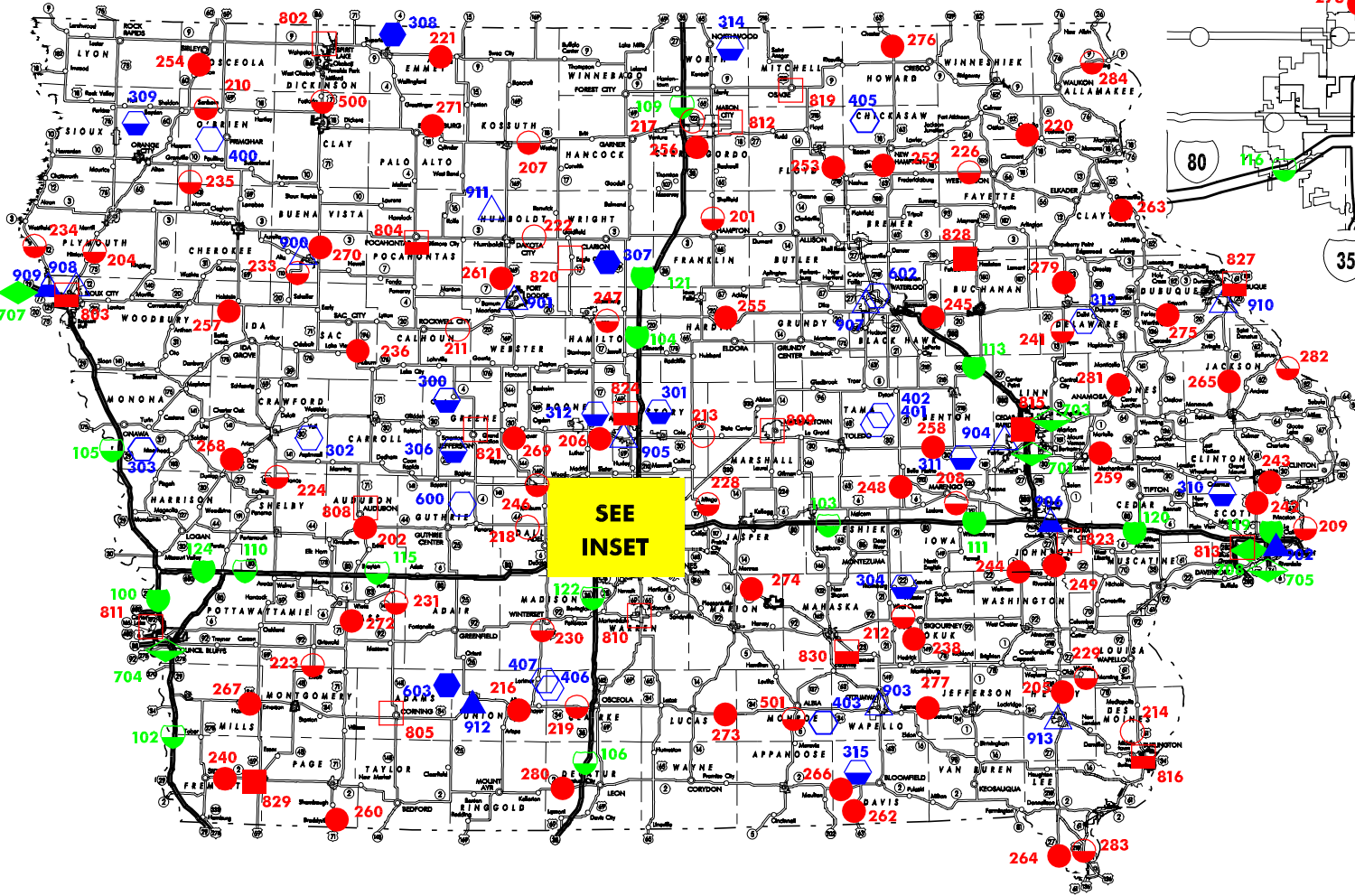
STATION	ROUTE	LOCATION	2000	2001	2002	2003	2004	2005	2006	2007	2008	2009	2010
600	CO F25	0.1 MI W OF CO P18 SPRINGBROOK	250	260	223	203	210	204	209	226	205	216	207
602	ENTRANCE	GEORGE WYTH S. P. WATERLOO	1200	1032	994	937	826	822	777	799	643	731	766
603	ENTRANCE	3.3 MI N OF IA 25 GREEN VALLEY S. P.	257	256	301	346	348	339	352	339	273	175	NO AADT

**2010 EXPANSION FACTORS
RECREATIONAL**

	SUN	MON	TUE	WED	THU	FRI	SAT
JAN	1.820	1.779	1.654	1.702	1.781	1.553	1.605
FEB	1.901	1.833	1.624	1.532	1.547	1.444	1.453
MAR	1.283	1.342	1.234	1.173	1.198	1.145	1.183
APR	1.069	1.148	1.077	0.991	1.053	0.901	0.940
MAY	0.694	0.799	0.955	0.927	0.845	0.709	0.638
JUN	0.763	0.890	0.916	0.846	0.838	0.673	0.681
JUL	0.694	0.914	0.888	0.864	0.753	0.611	0.633
AUG	0.745	0.960	0.949	0.926	0.894	0.737	0.698
SEP	0.827	0.964	1.066	1.040	0.990	0.796	0.738
OCT	1.072	1.078	1.102	1.099	1.083	0.887	0.919
NOV	1.479	1.281	1.257	1.227	1.330	1.149	1.247
DEC	1.864	1.476	1.488	1.547	1.552	1.504	1.536

AUTOMATIC TRAFFIC RECORDER LOCATIONS

JANUARY 1, 2011



Iowa Department of Transportation
 Office of Transportation Data
 Phone 515-239-1526



	13 CLASSES AND SPEED BY AXLE	3 CLASSES AND SPEED BY LENGTH	VOLUME ONLY		
RURAL INTERSTATE		9	9	1	
MUNICIPAL INTERSTATE		2	4	5	
RURAL PRIMARY		46	26	6	
MUNICIPAL PRIMARY		3	7	15	
RURAL SECONDARY		3	10	12	
MUNICIPAL STREETS		2	2	10	
TOTAL		172	65	58	49