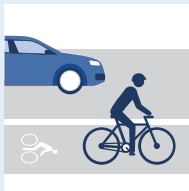
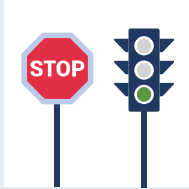


BICYCLING RULES OF THE ROAD

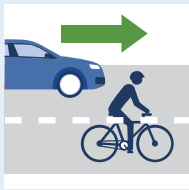


RIDE ONLY WHERE PERMITTED

Bicyclists are allowed on almost all Iowa roads except for interstates, highways with posted minimum speed limits, and streets where bicyclists are prohibited by local ordinance.



OBEY ALL TRAFFIC SIGNS, SIGNALS, AND LANE MARKINGS



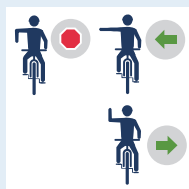
ALWAYS RIDE WITH THE FLOW OF TRAFFIC AND ON THE RIGHT

Ride in the right lane, except when passing another vehicle, preparing for a left turn, or avoiding hazards.



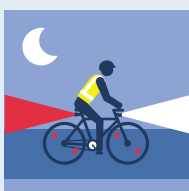
PASS ON THE LEFT

Always pass a vehicle or bicycle on the left. First move to the left lane. After overtaking the vehicle, return to the right lane once reaching a safe and clear distance in front of the vehicle.



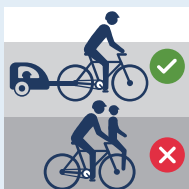
SIGNAL YOUR INTENTIONS WHEN TURNING OR STOPPING

Use your left hand to signal when you plan to turn, change lanes, or stop.



RIDING AT NIGHT (SUNSET TO SUNRISE)

Always use a white light on the front and red light or reflector on the rear, both visible for a distance of at least 300 feet.



LIMIT RIDERS TO THOSE YOUR BICYCLE IS DESIGNED AND EQUIPPED TO CARRY

Exceptions include adult bicyclists carrying a child securely attached to the bicycle in a seat or trailer designed to carry children.



STOP FOR SCHOOL BUSES WITH FLASHING SIGNAL LIGHTS

These laws are current as of May 4, 2023.

Please verify the Iowa Bicycle Laws at iowabicyclecoalition.org/bikelaws