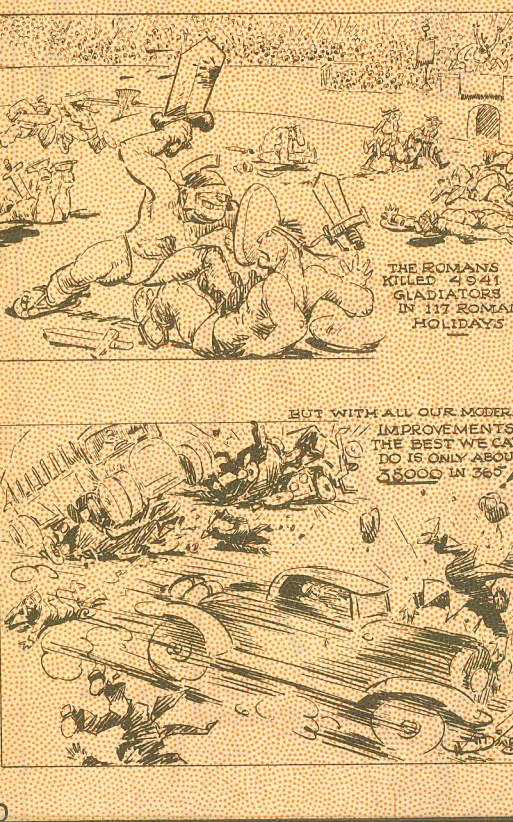


HIGHWAY MAP 1933

Who Said Machines Were So Much More Efficient Than Hand Labor?



Iowa State Highway Commission AMES, IOWA

Welcome Visiting Motorists

You will find that Iowa's motor vehicle regulations and traffic rules are comparatively few and simple. The alert, careful and courteous driver needs but few rules. You will encounter no prohibitions that will detract from the pleasure of using Iowa's highways. With equal freedom you may travel along the byways in search of beauty and reminders of an historic past, or you may hurry across the state on the smooth pavement of the main roads.

On rural highways no maximum speed limitation is imposed. The law states that the speed shall be "not greater than you feel that is reasonable and proper, having due regard to the traffic, surface and width of the highway, and of any other conditions then existing, and no person shall drive any vehicle upon a highway at a speed greater than will permit him to bring it to a stop within the allowed clear distance ahead."

Within cities and towns you will find the speed limit for various areas shown on large black-and-white signs placed on the shoulder or parking of the street. These areas and their respective speed limits are as follows:

Business district, 15 miles per hour.
School district, 15 miles per hour.
Residence district, 25 miles per hour.
Suburban district, same as rural.
Non-residents must register their vehicle with a County Treasurer within ten days after entering the state. Unless the driver carries a driver's license issued to him in his own state, he must obtain a driver's license within thirty days after entering the state.
While the Golden Rule was probably never intended as a traffic ordinance, it stands today as the best rule for promoting highway safety. The friendly smile of your fellow motorist will reward you for your courtesy.

Cities and Towns of Iowa

Table with columns: Loc., Town, 1930 Population, Loc., Town, 1930 Population. Lists various Iowa cities and their populations in 1930.

CITIES AND TOWNS—Continued

Continuation of the Cities and Towns of Iowa table, listing more cities and their 1930 populations.

CITIES AND TOWNS—Continued

Final continuation of the Cities and Towns of Iowa table, listing the remaining cities and their 1930 populations.

CITIES AND TOWNS—Continued. Table listing Iowa cities and towns with their 1930 populations.

CITIES AND TOWNS—Continued. Table listing Iowa cities and towns with their 1930 populations.

CITIES AND TOWNS—Continued. Table listing Iowa cities and towns with their 1930 populations.

CITIES AND TOWNS—Continued. Table listing Iowa cities and towns with their 1930 populations.

STATE PARKS OF IOWA. Table listing state parks in Iowa with columns for Name, Area, and Access.

STATE INSTITUTIONS. Table listing state institutions in Iowa with columns for Name and Location.

CITIES AND TOWNS—Continued. Table listing Iowa cities and towns with their 1930 populations.

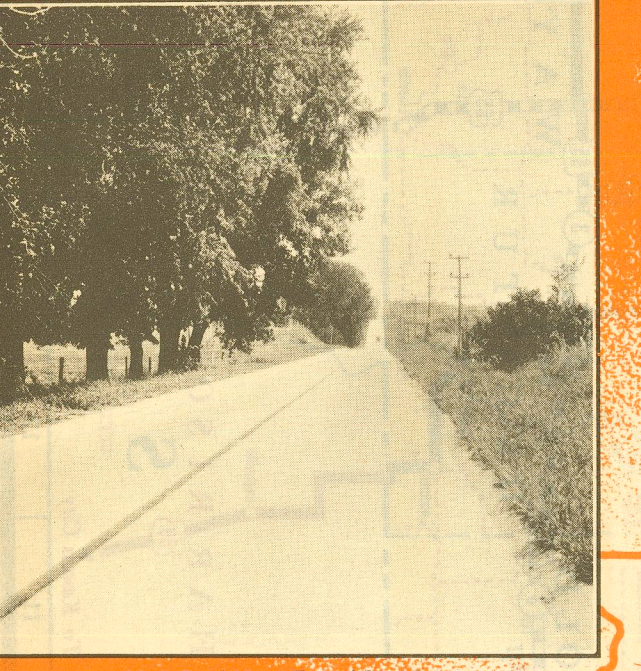
CITIES AND TOWNS—Continued. Table listing Iowa cities and towns with their 1930 populations.

CITIES AND TOWNS—Continued. Table listing Iowa cities and towns with their 1930 populations.

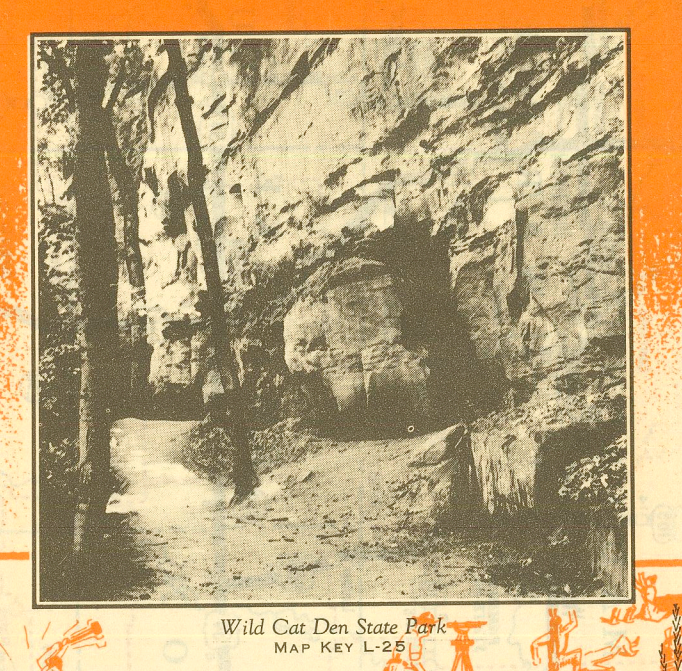
CITIES AND TOWNS—Continued. Table listing Iowa cities and towns with their 1930 populations.

STATE PARKS OF IOWA. Table listing state parks in Iowa with columns for Name, Area, and Access.

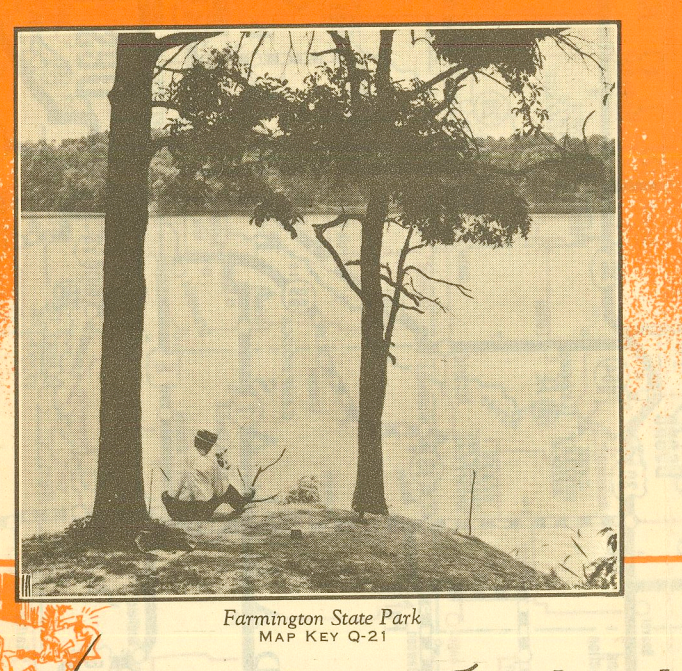
STATE INSTITUTIONS. Table listing state institutions in Iowa with columns for Name and Location.



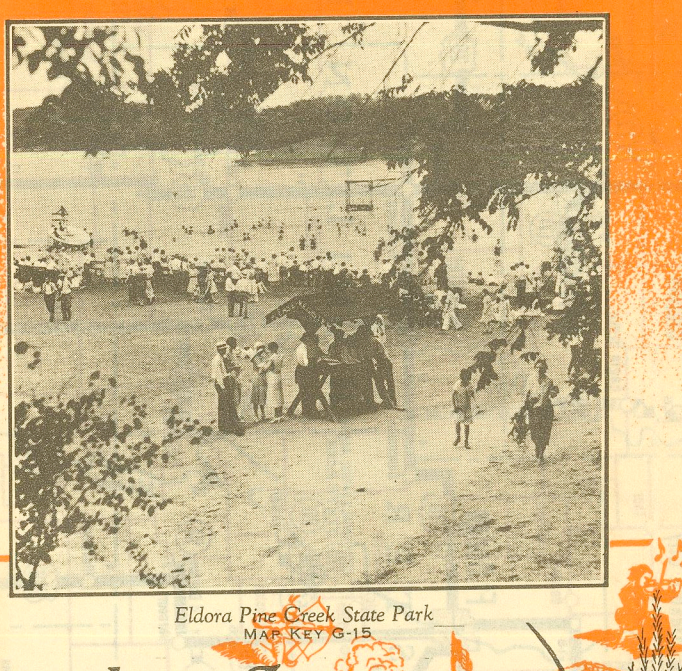
U. S. Road No. 6 East of Mt. Vernon



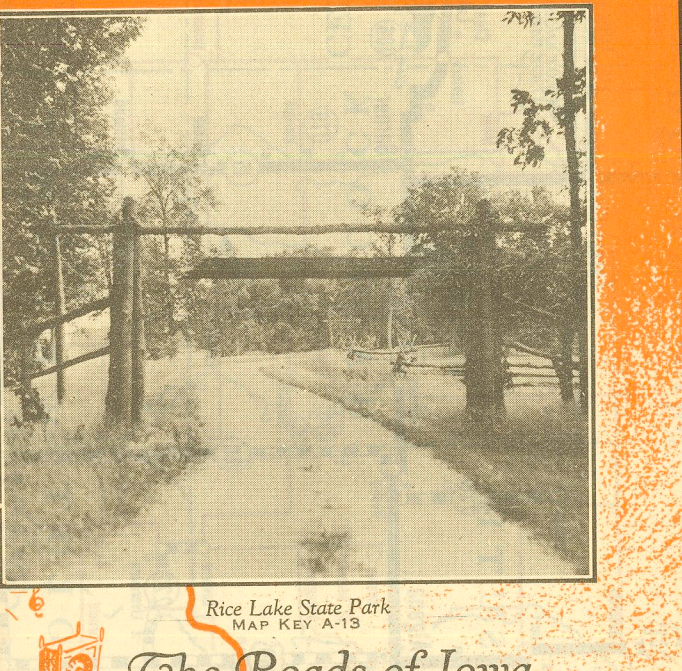
Wild Cat Den State Park



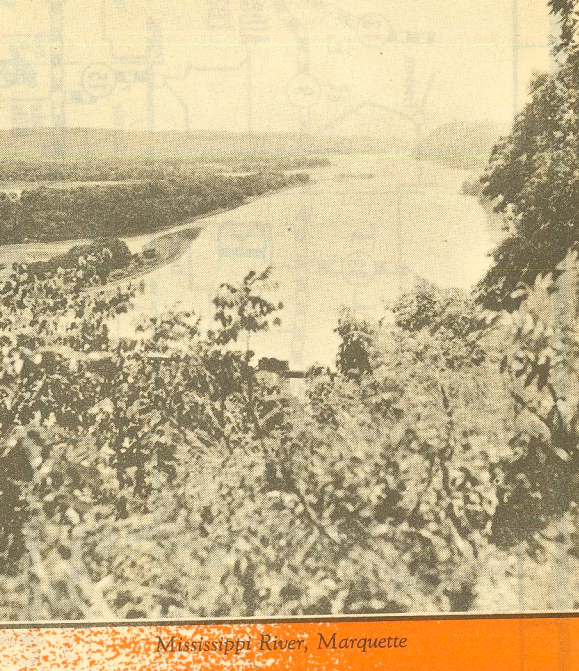
Farmington State Park



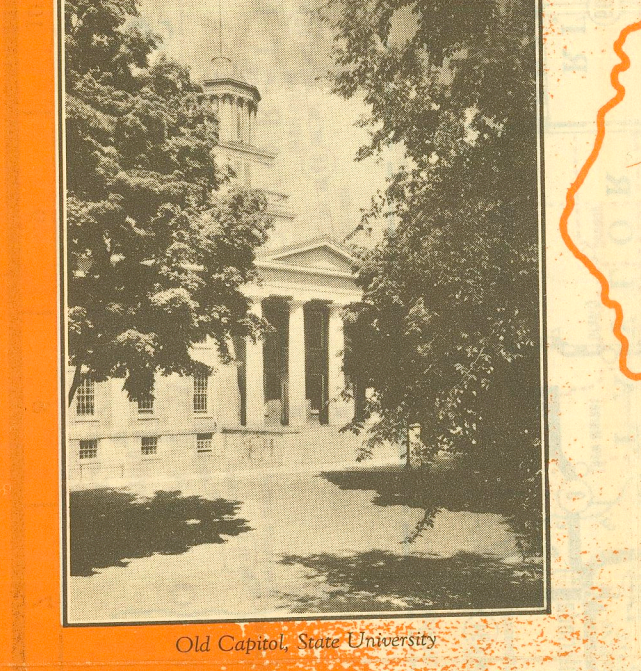
Eldora Pier Creek State Park



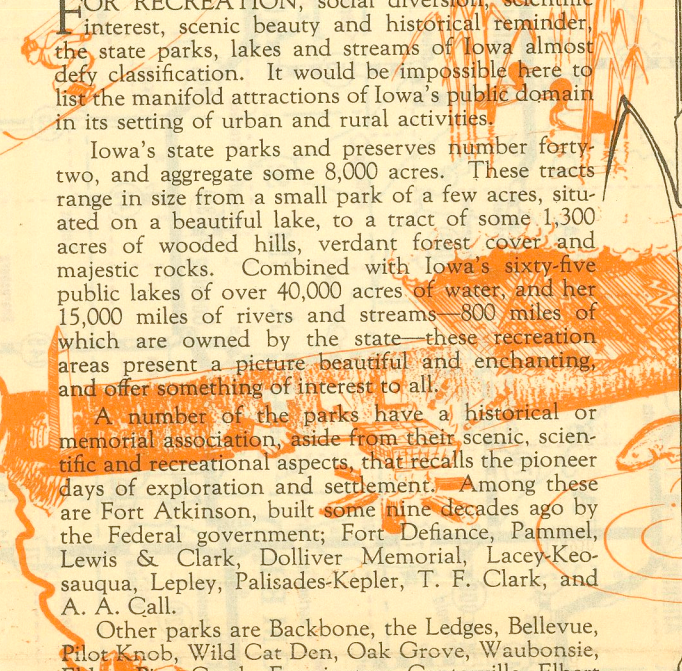
Rice Lake State Park



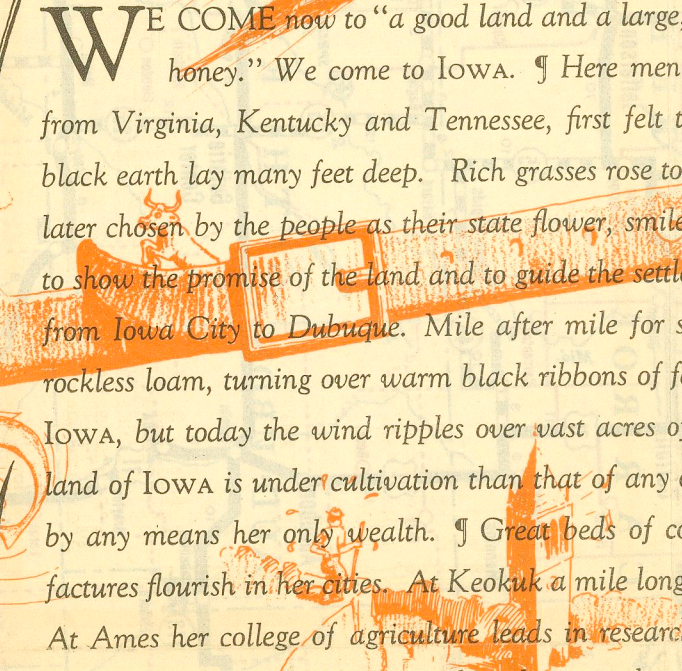
Mississippi River, Marquette



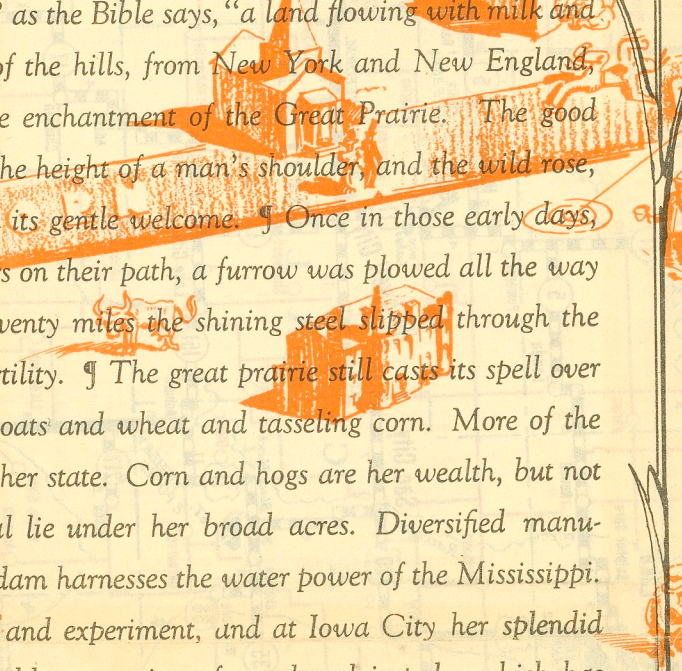
Old Capitol, Des Moines



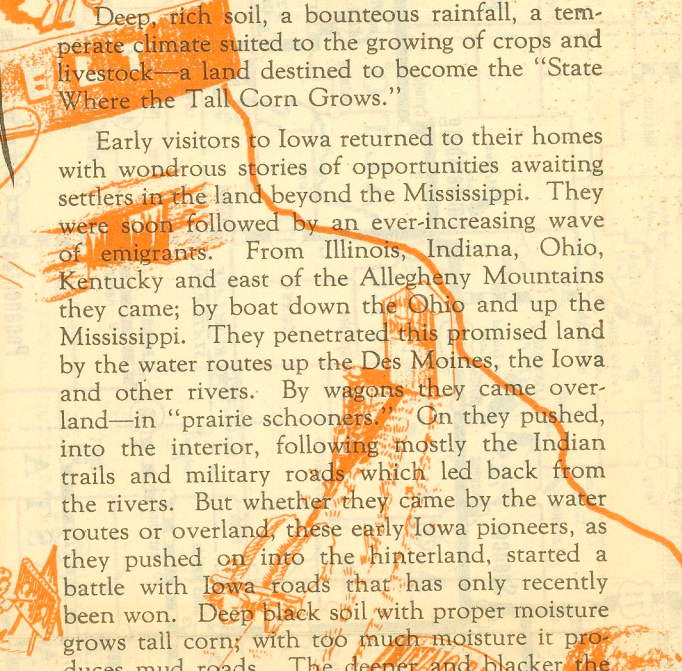
State Capitol, Des Moines



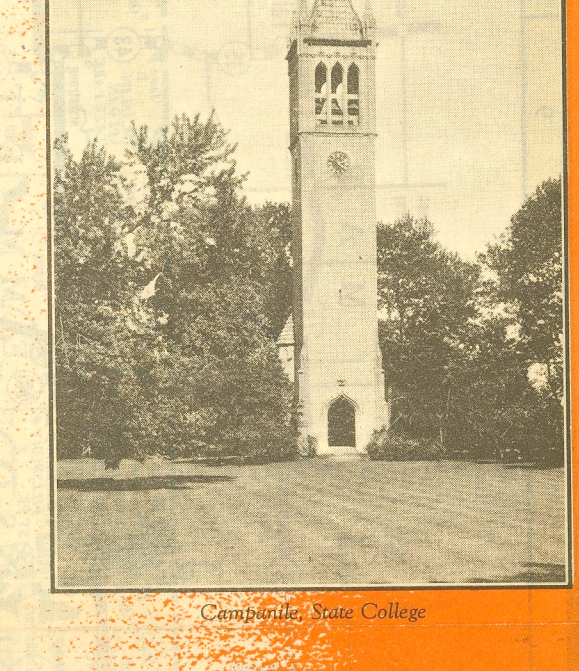
Pilot Knob State Park



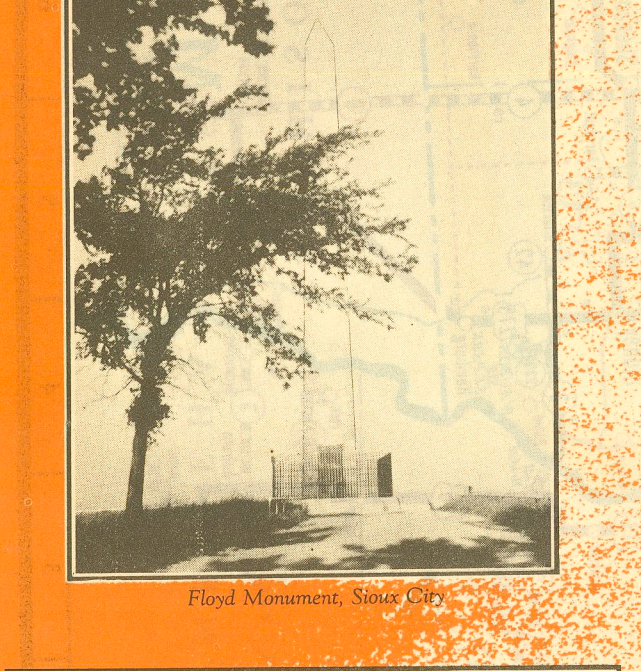
Wapasha State Park



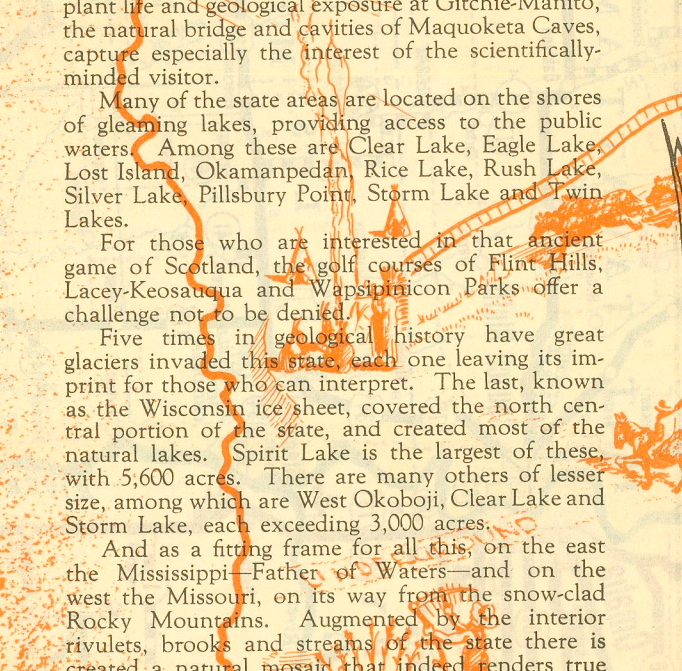
Okampanon State Park



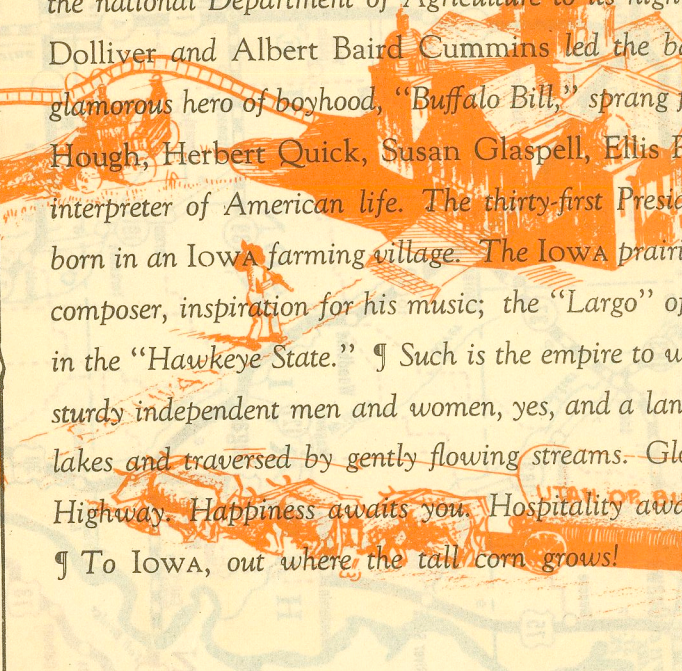
Primary Road No. 13 Near Elkader



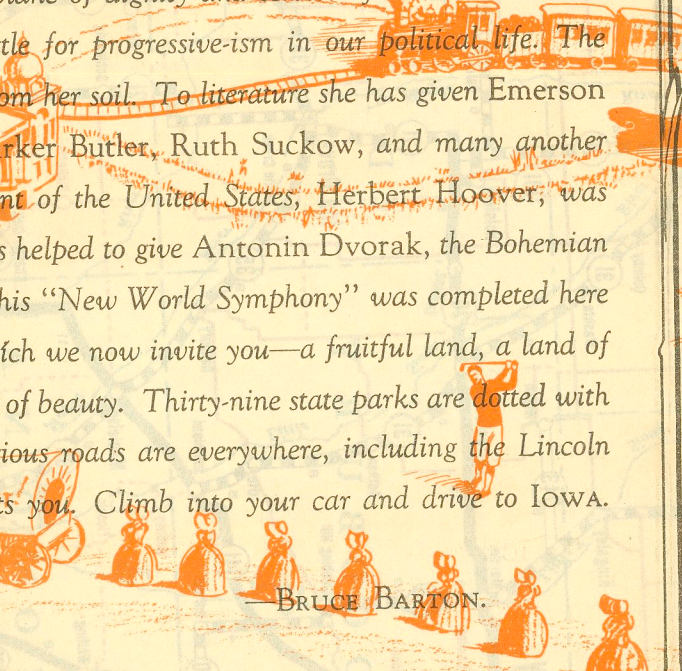
Floyd Monument, Story City



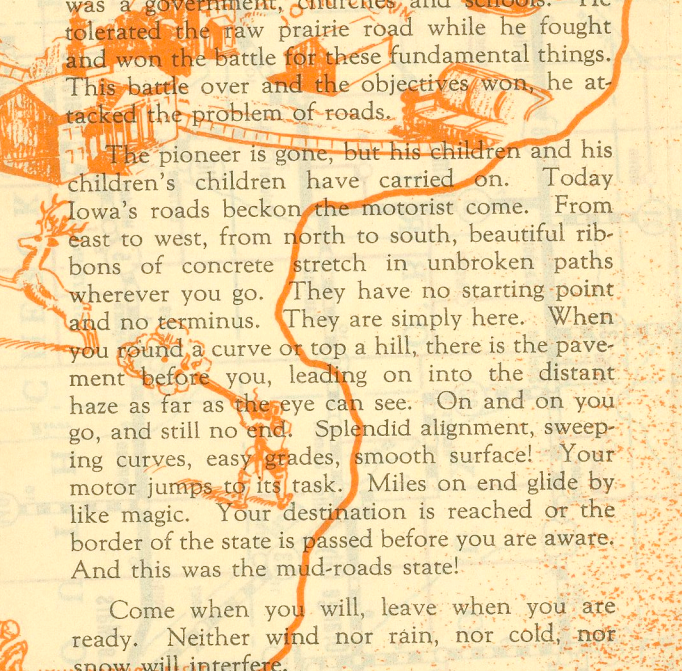
State Capitol, Des Moines



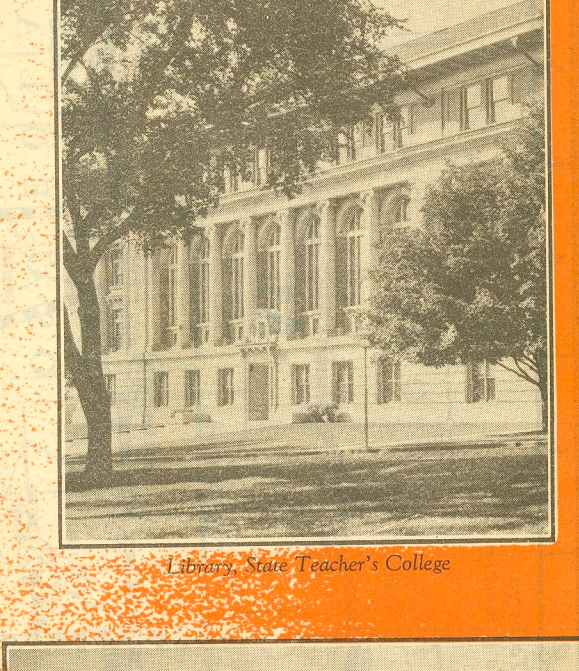
Pilot Knob State Park



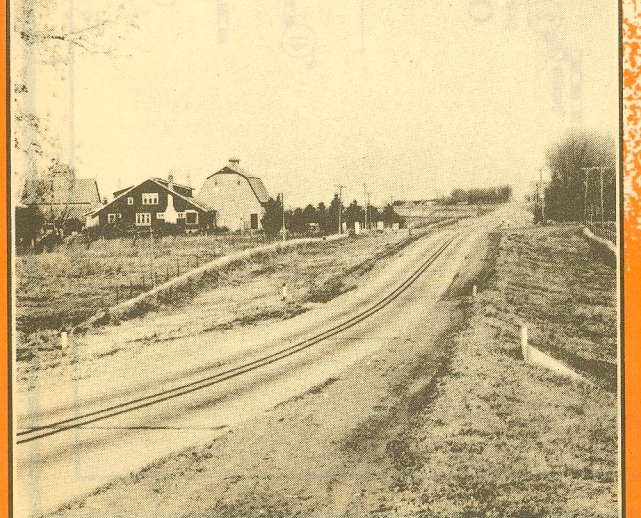
Wapasha State Park



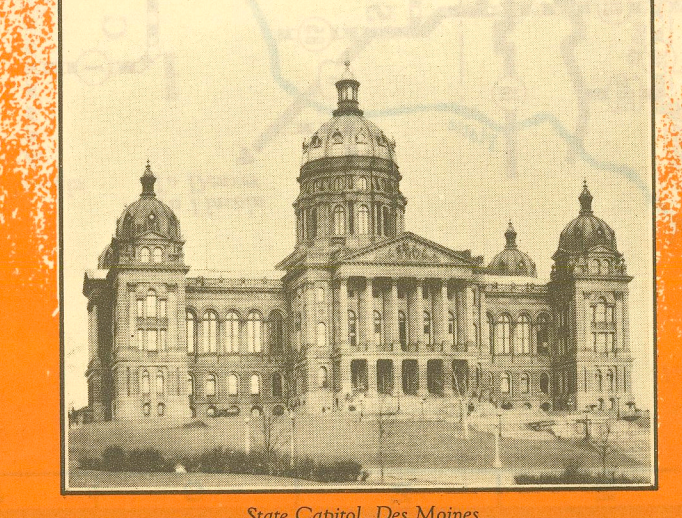
Okampanon State Park



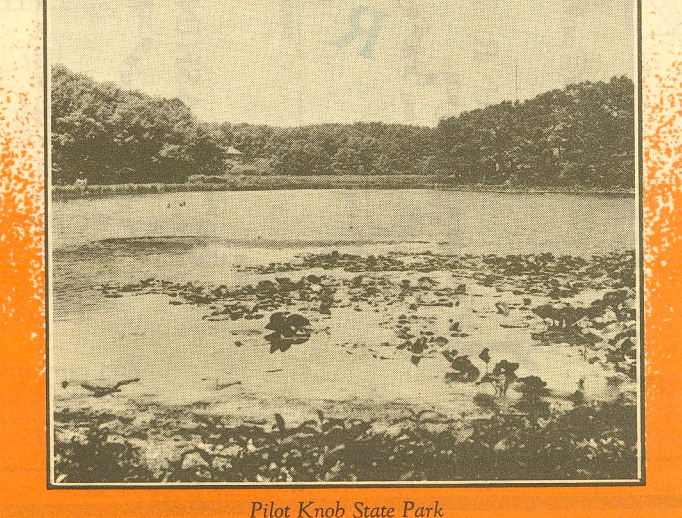
Primary Road No. 13 Near Elkader



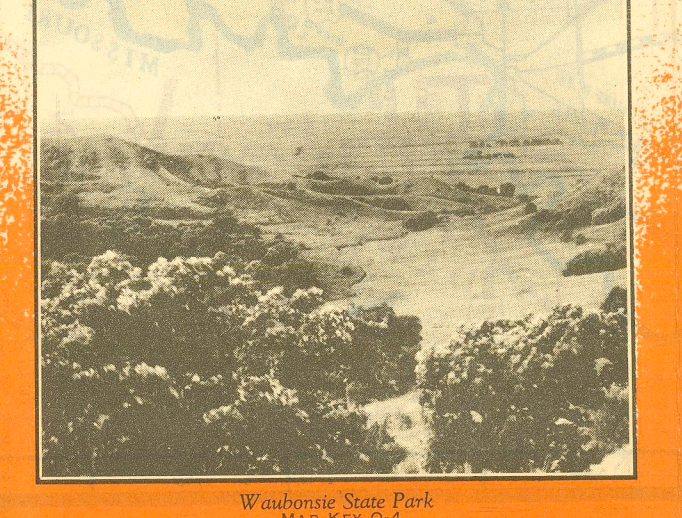
U. S. Road No. 65 North of Colo



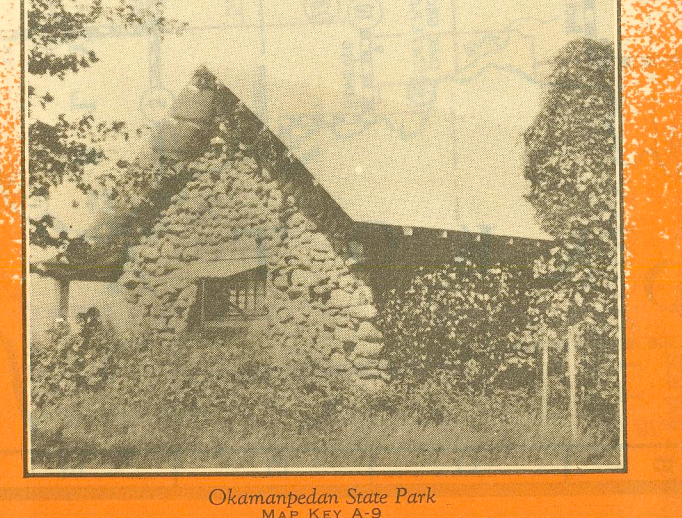
State Capitol, Des Moines



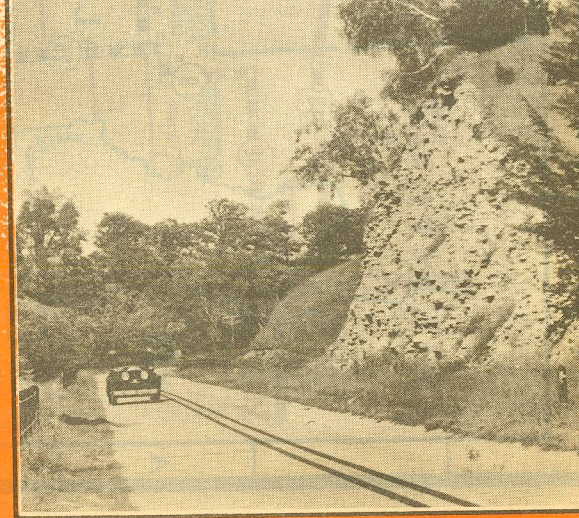
Pilot Knob State Park



Wapasha State Park



Okampanon State Park



Primary Road No. 13 Near Elkader

A Tribute to Iowa. A large section with a central title and several columns of text describing Iowa's natural beauty, parks, and history. Includes images of various Iowa landscapes and parks.