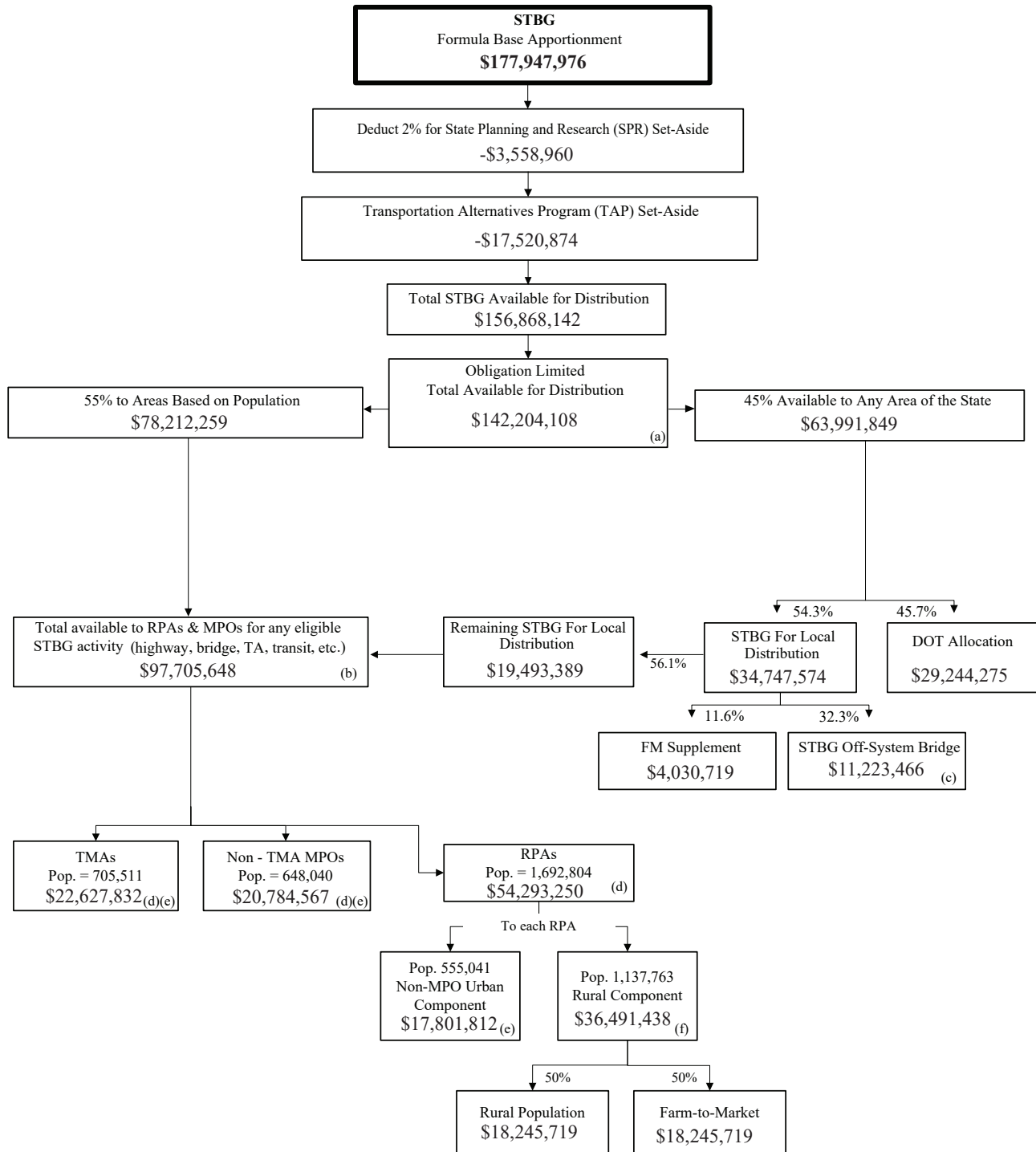


# STBG Program Target Allocation Methodology

## Infrastructure Investment and Jobs Act (IIJA) DRAFT Federal FY2022 Apportionments to Iowa



(a) Obligation limitation percent of formula apportionments equal to 90.652%

(b) 2010 Census State Population = 3,046,355

Per capita Allocation to TMA/MPO/RPA = \$32.07

(c) An amount equal to the FM Supplement is allocated to city bridge

(d) Populations based on 2010 Census w/ adjustments for Metropolitan or Urban Area Boundary

(e) Distributed based on population

(f) Rural component proportionally distributed to RPAs, 50% based on Rural Population and 50% based on Farm-to-Market factor