

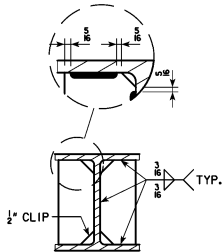
REVISED 12-2024 MODIFIED SECTION L-L (TYPICAL RUNWAY SECTION) DIMENSIONS TO FACILITATE PROPER ALIGNMENT OF RUNWAY WITH DMS CABINET. EXPANDED DIMENSION TABLE ASSOCIATED WITH DMS CABINET ACCESS HARDWARE. SEE DRAWING FOR DMS CABINET MODEL.
 STEEL OVERHEAD SIGN TRUSS.DGN - SOST-13-11 - THIS SHEET ISSUED 03-2013

Dimension Table								
For Runway Compatible with Skyline VMSLED-WV-20F-112x432-30C-I+-ISC DMS Cabinet								
Span	Truss Chord	A	B	L*	X*	U-Bolt Dimensions		
50'-100'	5"Ø Extra-Strong Steel Pipe	2 ²⁹ / ₃₂	5 ¹ / ₄	5'-0 ³ / ₄ "	1'-2 ³ / ₄ '	6 ⁷ / ₁₆	3 ⁷ / ₃₂	5 ¹ / ₂
105'-130'	6"Ø Extra-Strong Steel Pipe	3 ⁷ / ₁₆	5 ³ / ₄	5'-1 ³ / ₄ "	1'-3 ³ / ₄ '	7 ¹ / ₂	3 ³ / ₄	6

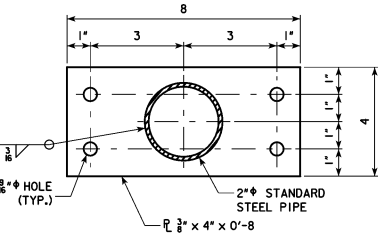
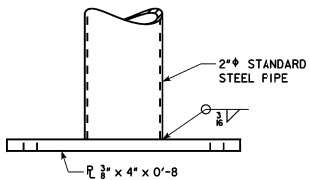
Dimension Table								
For Runway Compatible with Daktronics VF-2020-112x432-20 DMS Cabinet								
Span	Truss Chord	A	B	L*	X*	U-Bolt Dimensions		
50'-100'	5"Ø Extra-Strong Steel Pipe	2 ²⁹ / ₃₂	5 ¹ / ₄	5'-3 ³ / ₄ "	1'-5 ¹ / ₄ '	6 ⁷ / ₁₆	3 ⁷ / ₃₂	5 ¹ / ₂
105'-130'	6"Ø Extra-Strong Steel Pipe	3 ⁷ / ₁₆	5 ³ / ₄	5'-4 ¹ / ₄ "	1'-6 ¹ / ₄ '	7 ¹ / ₂	3 ³ / ₄	6

*THESE DIMENSIONS ARE FOR ESTIMATING PURPOSES ONLY. THE CONTRACTOR SHALL VERIFY SPECIFIC DMS CABINET DIMENSIONS, POSITIONING AND ORIENTATION RELATIVE TO THE SUPPORT TRUSS BEFORE DETAILING SHOP DRAWINGS TO ENSURE PROPER ALIGNMENT OF DMS ACCESS RUNWAY AND ASSOCIATED HANDRAILS WITH DMS ACCESS DOOR.

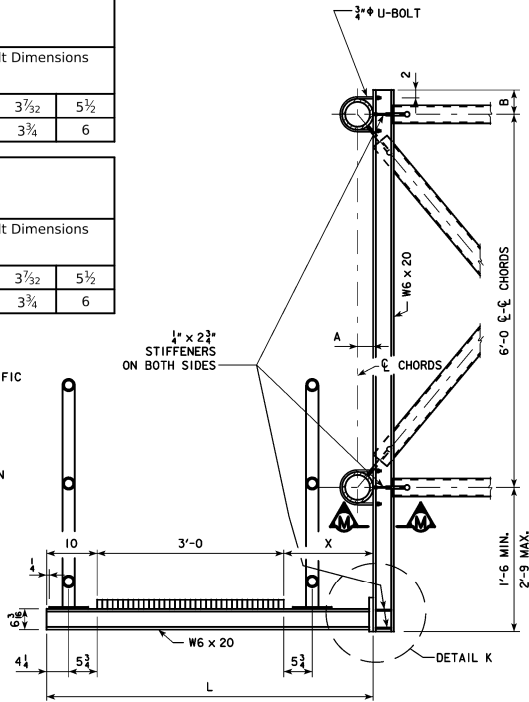
NOTE THAT IDENTICAL DMS CABINETS MAY BE POSITIONED AND ORIENTED DIFFERENTLY DUE TO DIFFERENCES IN DMS-TO-TRUSS ATTACHMENT HARDWARE. DO NOT ASSUME DIMENSIONS OF ATTACHMENT HARDWARE. CONTACT THE IOWA D.O.T. TRAFFIC OPERATIONS BUREAU FOR INFORMATION ABOUT SPECIFIC DMS CABINET DIMENSIONS, POSITIONING AND ORIENTATION RELATIVE TO A PARTICULAR SUPPORT TRUSS.



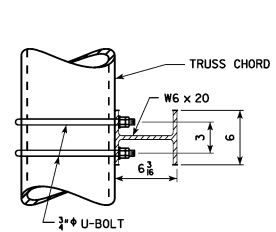
TYPICAL STIFFENER DETAIL



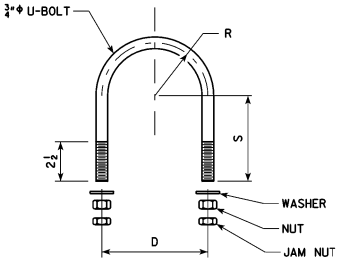
HANDRAIL POST BASE PLATE



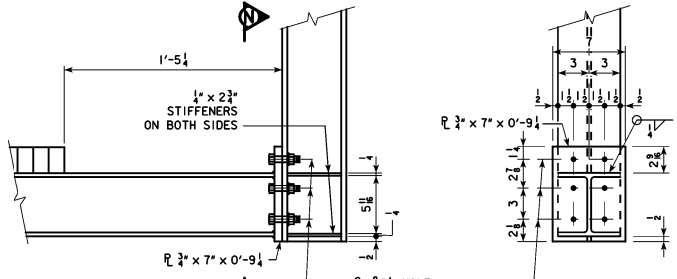
SECTION L-L TYPICAL RUNWAY SECTION



SECTION M-M



U-BOLT DETAIL



DETAIL K

SECTION N-N FASTENERS NOT SHOWN

1/2" F3125 GRADE A325 GALVANIZED BOLT WITH WASHER, NUT AND JAM NUT. (AN A449 BOLT IS REQUIRED IF REGULAR NUT IS SUBSTITUTED FOR JAM NUT.)

END ELEVATION OF HANDRAIL POST BASE

12-2024 LATEST REVISION DATE APPROVED BY BRIDGE ENGINEER	 STANDARD DESIGN STEEL OVERHEAD SIGN TRUSS SEPTEMBER, 2011	
	DMS RUNWAY DETAILS 50'-130' SPANS	SOST-13-11