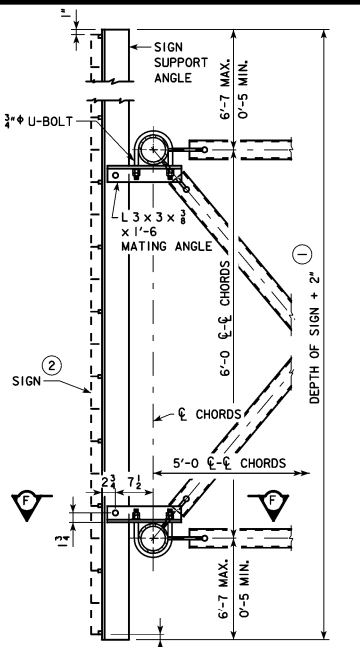
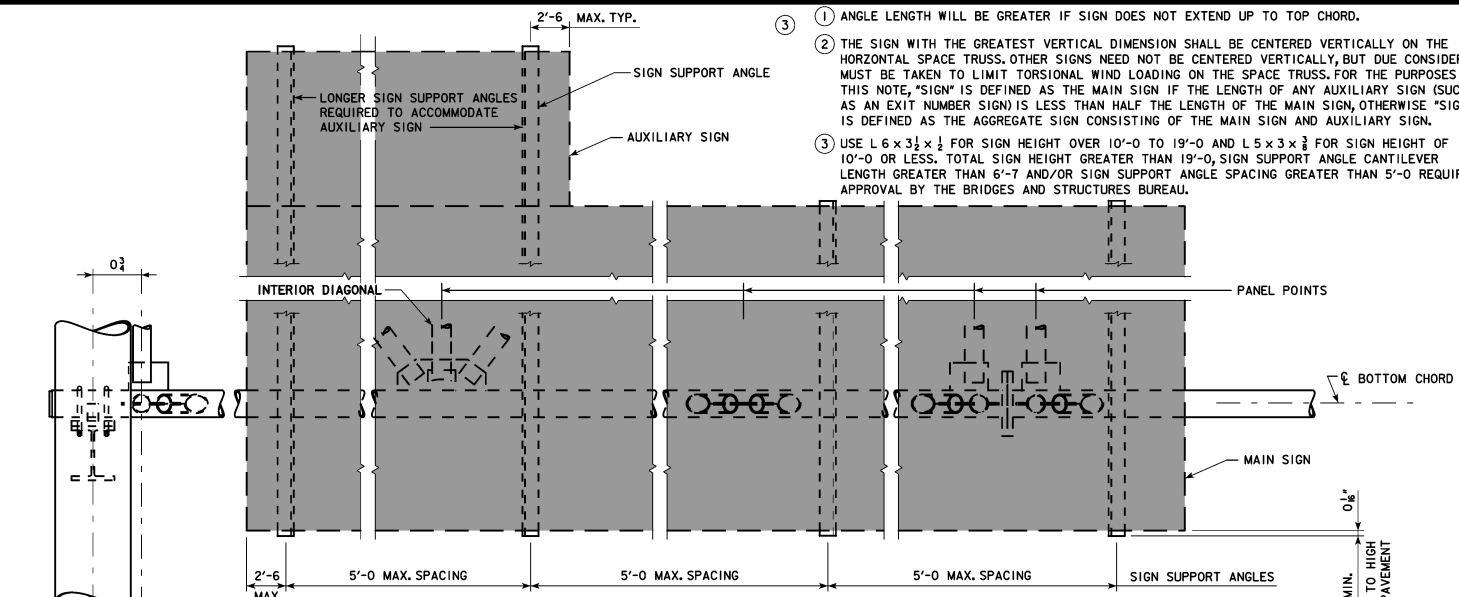


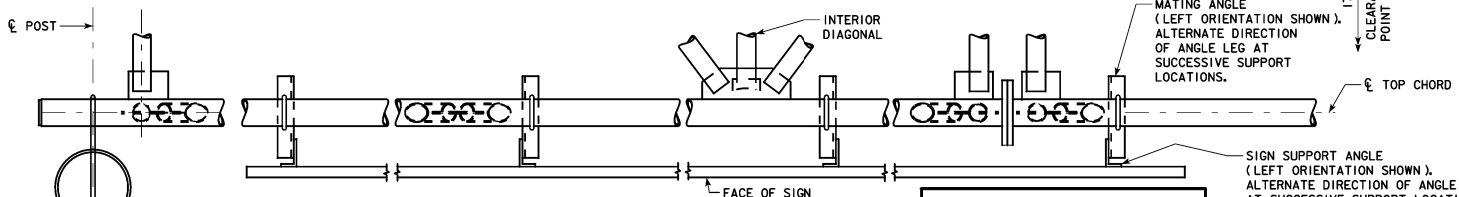
\*REVISED 04-2020; CHANGED "OFFICE OF BRIDGES AND STRUCTURES BUREAU" TO "BRIDGES AND STRUCTURES BUREAU", DESIGNATED L 3 x 3 x 3/8 x 1'-6" AS A MATING ANGLE FOR CLARITY IN TYPICAL SIGN PANEL SECTION, SECTION F-F, AND PART PLAN. ADDED ADDITIONAL DETAIL TO SECTION F-F AND MODIFIED CALLOUTS TO CLARIFY THAT DIRECTION OF ANGLE LEG IS TO ALTERNATE AT SUCCESSIVE SUPPORTS FOR BOTH SIGN SUPPORT ANGLES AND MATING ANGLES.  
 \*REVISED 12-2024; MODIFIED NOTE 2 TO IMPROVE CLARITY. AT VARIOUS LOCATIONS, CHANGED "ADDITIONAL SIGN" TO "AUXILIARY SIGN", CHANGED "TYPICAL SIGN" TO "MAIN SIGN" AND CHANGED "SIGN PANEL" TO "STEEL OVERHEAD SIGN TRUSS". SOST-11-11 - THIS SHEET ISSUED 09-2011



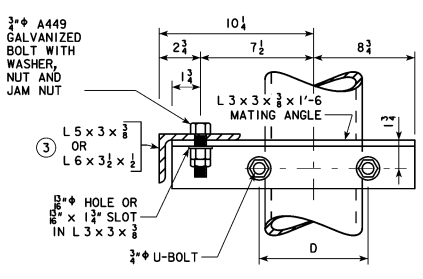
TYPICAL SIGN SECTION



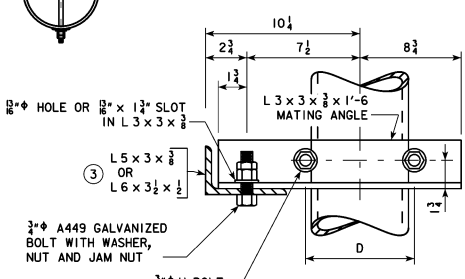
PART ELEVATION



PART PLAN



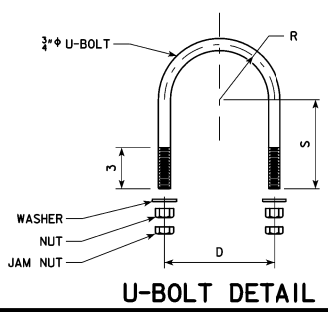
(LEFT ORIENTATION)



(RIGHT ORIENTATION)

SECTION F-F

ALTERNATE DIRECTION OF SIGN SUPPORT ANGLE LEG AND MATING ANGLE LEG AT SUCCESSIVE SUPPORTS AS SHOWN IN PART PLAN.



U-BOLT DETAIL

- ① ANGLE LENGTH WILL BE GREATER IF SIGN DOES NOT EXTEND UP TO TOP CHORD.
- ② THE SIGN WITH THE GREATEST VERTICAL DIMENSION SHALL BE CENTERED VERTICALLY ON THE HORIZONTAL SPACE TRUSS. OTHER SIGNS NEED NOT BE CENTERED VERTICALLY, BUT DUE CONSIDERATION MUST BE TAKEN TO LIMIT TORSIONAL WIND LOADING ON THE SPACE TRUSS. FOR THE PURPOSES OF THIS NOTE, "SIGN" IS DEFINED AS THE MAIN SIGN IF THE LENGTH OF ANY AUXILIARY SIGN (SUCH AS AN EXIT NUMBER SIGN) IS LESS THAN HALF THE LENGTH OF THE MAIN SIGN, OTHERWISE "SIGN" IS DEFINED AS THE AGGREGATE SIGN CONSISTING OF THE MAIN SIGN AND AUXILIARY SIGN.
- ③ USE L 6 x 3 1/2 x 1/2 FOR SIGN HEIGHT OVER 10'-0 TO 19'-0 AND L 5 x 3 x 1/2 FOR SIGN HEIGHT OF 10'-0 OR LESS. TOTAL SIGN HEIGHT GREATER THAN 19'-0, SIGN SUPPORT ANGLE CANTILEVER LENGTH GREATER THAN 6'-7 AND/OR SIGN SUPPORT ANGLE SPACING GREATER THAN 5'-0 REQUIRES APPROVAL BY THE BRIDGES AND STRUCTURES BUREAU.

U-BOLT DIMENSION TABLE				
SPAN	TRUSS CHORD	U-BOLT DIMENSIONS		
		D	R	S
50' - 100'	5" EXTRA-STRONG STEEL PIPE	6 5/8	3 3/8	5 1/2
105' - 130'	6" EXTRA-STRONG STEEL PIPE	7 1/2	3 3/4	6

**IOWADOT**

STANDARD DESIGN

**STEEL OVERHEAD SIGN TRUSS**

SEPTEMBER, 2011

<b>SIGN ATTACHMENT DETAILS</b>	<b>SOST-11-11</b>
50'-130' SPANS	

LATEST REVISION DATE

12-2024

APPROVED BY BRIDGE ENGINEER