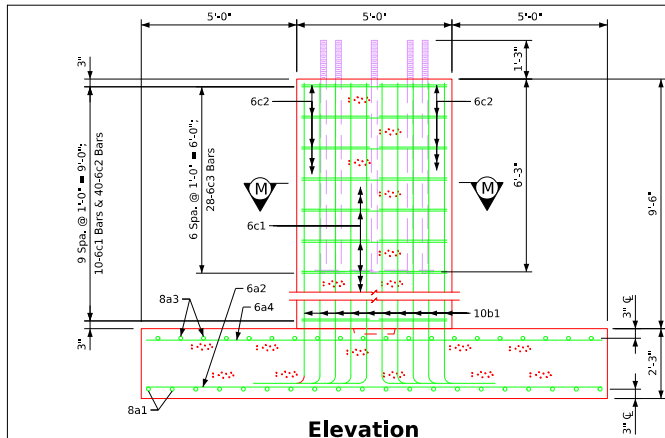
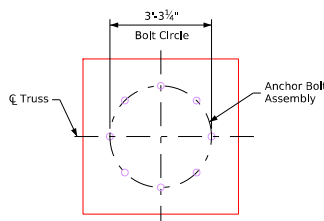


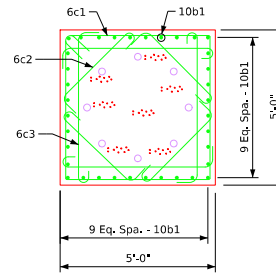
• Revised 03-2018: Updated Bridge Engineer signature.
 • Revised 03-2018: Added two special bid items ("Anchor Bolt Assembly-Furnish" and "Anchor Bolt Assembly-Install and Survey") to clarify Contractor responsibility to accurately install anchor bolt assembly.
 • Revised 11-2023: This sheet revised, sheet format update.
 • Steelcantileversigntruss.dgn - SCST-08-17 - This sheet issued 07-2017.



Elevation



Top View

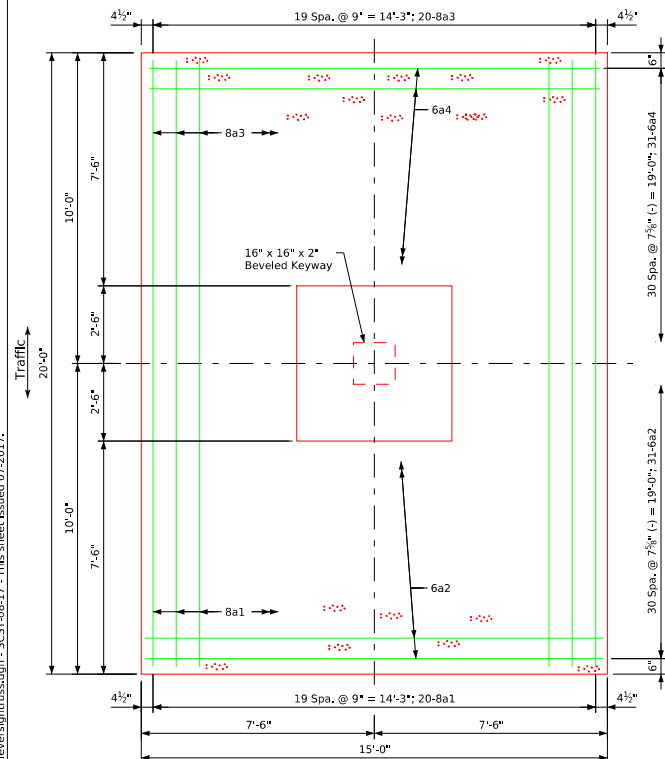


Section M-M

4-6c3 bars are to be placed with every layer of 6c1 bars in the top 6'-3" of the pedestal.

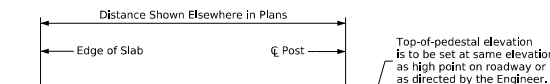
Concrete Placement Quantities

Pedestal	8.8
Footing	25.0
Total - C.Y.	33.8

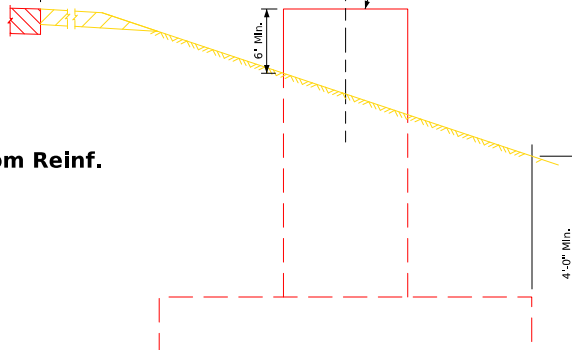


Footing Plan

Top Reinf. Steel



Bottom Reinf. Steel

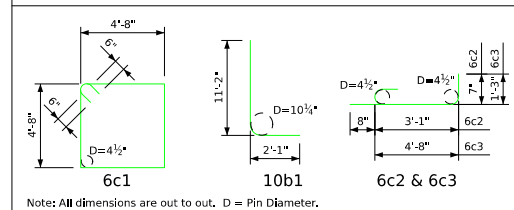


Elevation - Top of Pedestal and Backfill

Reinforcing Bar List - Epoxy Coated

Bar	Location	Shape	No.	Length	Weight
8a1	Footing Bott., Longlt.		20	19'-8"	1050
6a2	Footing Bott., Transv.		31	14'-8"	683
8a3	Footing Top, Longlt.		20	19'-8"	1050
6a4	Footing Top, Transv.		31	14'-8"	683
10b1	Footing to Pedestal Dowel		36	13'-3"	2053
6c1	Pedestal Ties		10	19'-8"	295
6c2	Pedestal Ties		40	4'-4"	260
6c3	Pedestal Ties		28	6'-7"	277
Epoxy Coated Reinforcing Steel - Total (lbs.)					6351

Bent Bar Details



General Notes:

Structural concrete, Class C, shall be used for the foundation.

All exposed corners 90° or sharper shall be filleted with a 3/8" dressed and beveled strip.

Excavation for the foundation shall be to neat lines and concrete shall be placed against the undisturbed material. All excavation for the foundation shall be disposed in the area adjacent to the foundation and shaped to normal ground contour, unless otherwise directed by the Engineer.

One anchor bolt assembly including anchor plate, template, nuts (5 per bolt) and washers (2 per bolt) are required per foundation.

All anchor bolt materials and galvanizing shall be in accordance with the requirements of Article 4187.01, C, 3 of the Standard Specifications.

The foundation details shown are based on a net allowable soil bearing pressure (for settlement) of 1.0 ton/ft².

Price bid for contract items shall include all labor and materials necessary to construct cantilever sign truss foundation as detailed hereon. The cost of furnishing and installing rodent guard shall be included in the price bid for "Structural Concrete (Miscellaneous)" and no separate payment will be made. The cost of furnishing anchor bolt assembly shall be included in the price bid for "Anchor Bolt Assembly-Furnish". (Note that this is a special bid item.) The cost of accurately installing and surveying anchor bolt assembly shall be included in the price bid for "Anchor Bolt Assembly-Install and Survey". (Note that this is a special bid item.) See structural alignment/tolerance notes on Standard Sheet SCST-01-17 for anchor bolt assembly alignment documentation requirements. Contract items for cantilever sign truss foundation construction are:

- Reinforcing Steel, Epoxy Coated - pounds
- Structural Concrete (Miscellaneous) - cubic yards
- Excavation - cubic yards of class specified
- Anchor Bolt Assembly-Furnish (special bid item) - pounds
- Anchor Bolt Assembly-Install and Survey (special bid item) - each

11-2025 Latest Revision Date		IOWA DOT	
		Standard Design	
Steel Cantilever Sign Truss		July, 2017	
		Foundation Details - Spread Footing	SCST-08-17