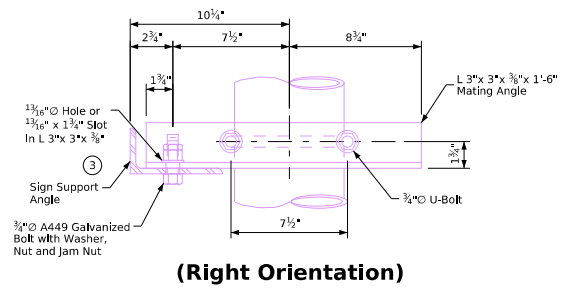
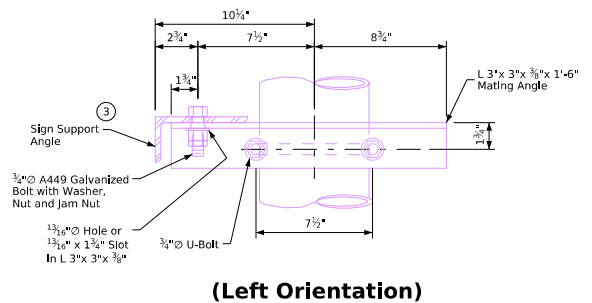
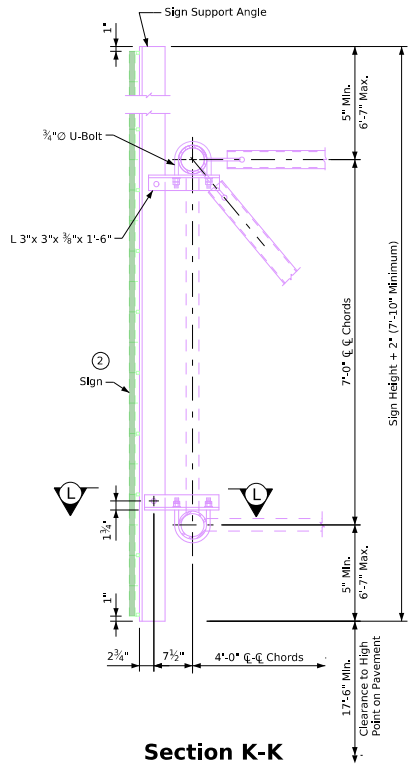
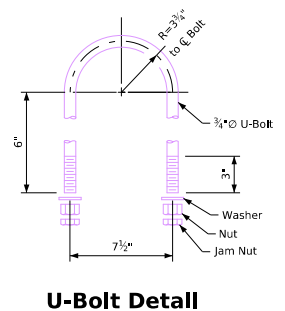
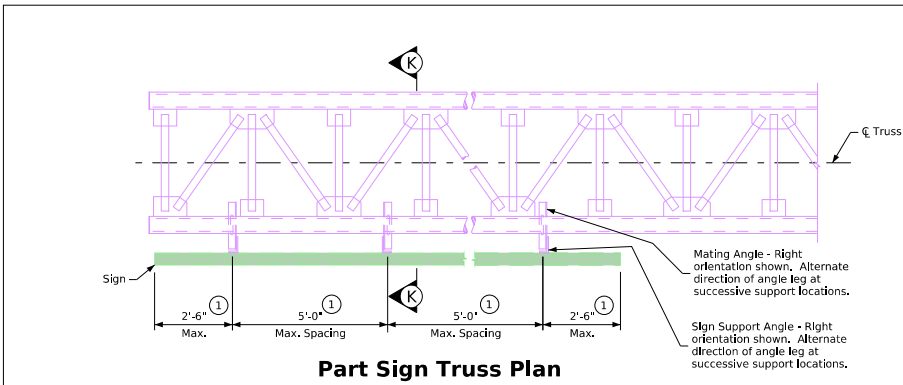


Revised 04-2020: Changed "Office of Bridges and Structures" to "Bridges and Structures Bureau". Designated L 3 x 3 x 3/8 x 1'-6" as a mating angle for clarity in Part Sign Truss Plan, Section K-K, and Section L-L. Added additional detail to Section L-L and modified callouts to clarify that direction of angle leg is to alternate at successive supports for both sign support angles and mating angles. Moved Section K-K cut line in Part Sign Truss Plan to accurately reflect location of Section K-K. Modified depiction of mating angles in Part Sign Truss Plan to accurately show that direction of angle leg alternates at successive supports. Revised depiction of U-bolt in Section F-F to accurately show U-bolt size. Flipped Section F-F to accurately show U-bolt size. Flipped Section F-F to accurately show U-bolt size. Revised 11-2025: This sheet revised sheet format update. At various locations, changed "Sign Panel" to "Main Sign" and changed "Supplementary Sign Panel" to "Auxiliary Sign".



Section L-L

Alternate direction of sign support angle leg and mating angle leg at successive supports as shown in Part Sign Truss Plan.

- ① Dimension restrictions apply to main sign and any auxiliary signs that may be present.
- ② Center the main sign vertically on the truss if the auxiliary sign length is less than half the length of the main sign, otherwise center the combined height of the main sign and auxiliary sign vertically on the truss.
- ③ Use L 6"x 3 1/2"x 3/8" for sign height over 10'-0" to 20'-0" and L 5"x 3"x 3/8" for sign height of 10'-0" or less. A total sign height greater than 20'-0", sign vertical cantilever length greater than 6'-7", and/or sign support angle horizontal spacing greater than 5'-0" requires approval by the Bridges and Structures Bureau.

11-2025 Latest Revision Date	IOWA DOT	
	Standard Design Steel Cantilever Sign Truss July, 2017	
Approved by Bridge Engineer <i>[Signature]</i>	Sign Attachment Details	SCST-07-17