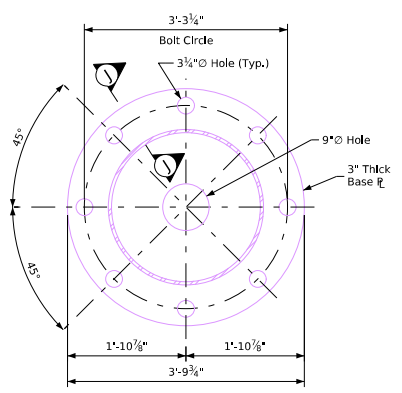
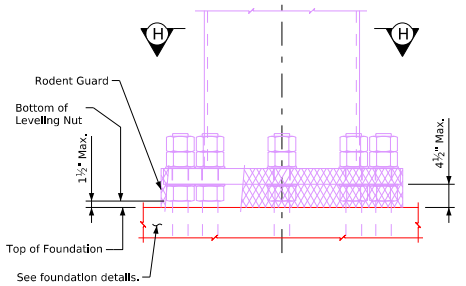


• Revised 04-2025: Changed 'Galvanizing hole' in section J-J to 'Galvanizing hole' in section J-J to reflect hole use as a galvanizing drain hole. Revised Section J-J post-to-base-plate weld symbol to show a standard back-galvanizing. Change section J-J to 'Complete Penetration Groove Weld' to conform to AWS nomenclature. Added callout in anchor bolt assembly detail to clarify that anchor bolt holes in base plate shall be spaced at 3 1/2" max. to 3 1/2" Hole (Typ.) in Section H-H. In Section H-H, the rodent guard shall be placed around the base plate.



Section H-H

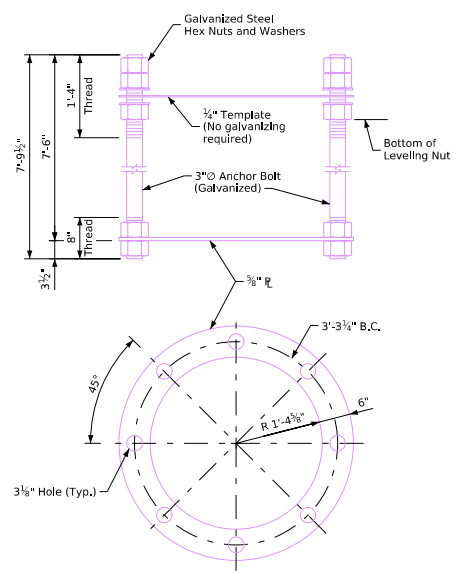


Post Base Detail
Showing the Rodent Guard

The rodent guard shall be placed around the base plate.

The rodent guard is stainless steel standard grade wire cloth, 1/4" maximum opening with a minimum wire diameter of AWG No. 16 with a minimum 2" lap.

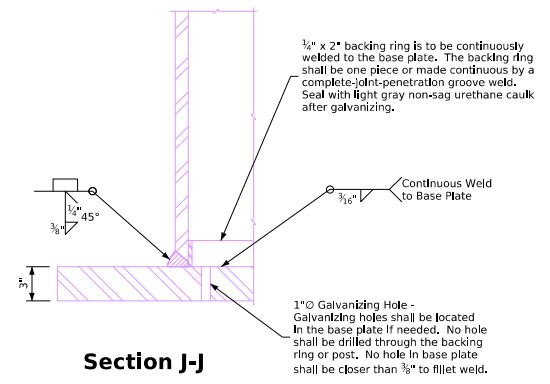
Secure wire cloth to base plate after erection with 3/4" stainless steel banding. The rodent guard shall not extend above the top of the base plate.



Anchor Bolt Assembly

All anchor bolt materials and galvanizing shall be in accordance with Article 4187.01, C.3 of the Standard Specifications.

Weight of the anchor bolt assembly: 2063 lbs. (includes template, excludes galvanizing weight)



Section J-J

1/2" x 2" backing ring is to be continuously welded to the base plate. The backing ring shall be one piece or made continuous by a complete joint-penetration groove weld. Seal with light gray non-sag urethane caulk after galvanizing.

Continuous Weld to Base Plate

1" Galvanizing Hole - Galvanizing holes shall be located in the base plate if needed. No hole shall be drilled through the backing ring or post. No hole in base plate shall be closer than 3/8" to fillet weld.

11-2025 Latest Revision Date Approved by Bridge Engineer	 Standard Design Steel Cantilever Sign Truss July, 2017	
	Post Base Support Details	SCST-06-17