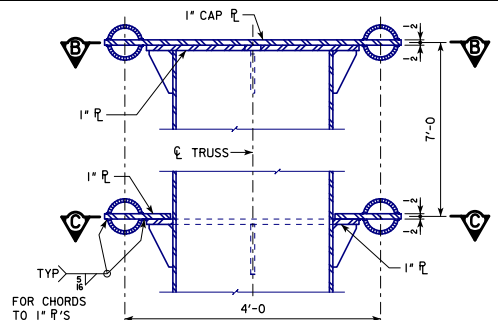
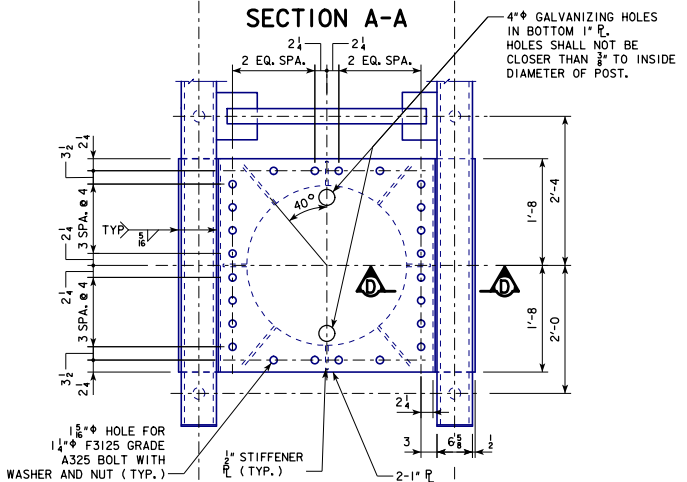


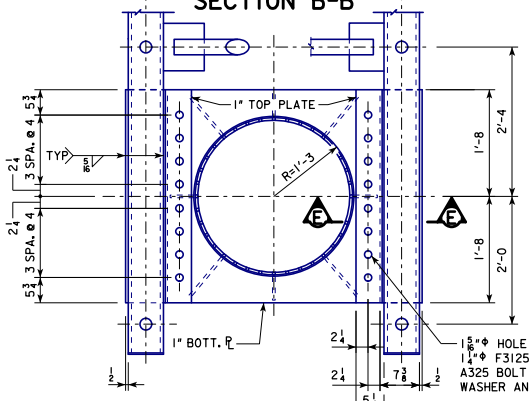
\*REVISED 03-2018: UPDATED BRIDGE ENGINEER SIGNATURE.  
 \*REVISED 03-2019: ADDED 4" GALVANIZING HOLES IN PLATE TO IMPROVE CONSTRUCTIBILITY. MODIFIED CALLOUTS TO ADDRESS CHANGE IN ASTM SPECIFICATIONS. ADDED FASTENERS IN SECTION D-D AND SECTION E-E TO IMPROVE CLARITY.  
 \*STEELCANTILEVERSIGNTRUSS.sgn - SCST-04-17 - THIS SHEET ISSUED 07-2017.



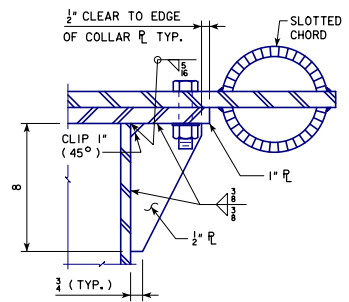
**SECTION A-A**



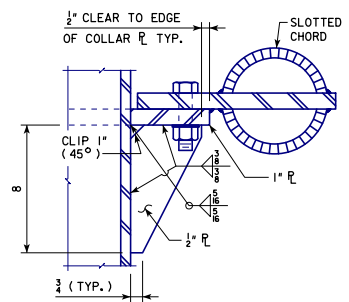
**SECTION B-B**



**SECTION C-C**



**SECTION D-D**



**SECTION E-E**

SEE STANDARD SHEET SCST-02-17 FOR LOCATION OF SECTION A-A.

03-2019 LATEST REVISION DATE  APPROVED BY BRIDGE ENGINEER	 STANDARD DESIGN
	<b>STEEL CANTILEVER SIGN TRUSS</b> JULY, 2017
	<b>TRUSS-TO-POST CONNECTION DETAILS</b>
<b>SCST-04-17</b>	