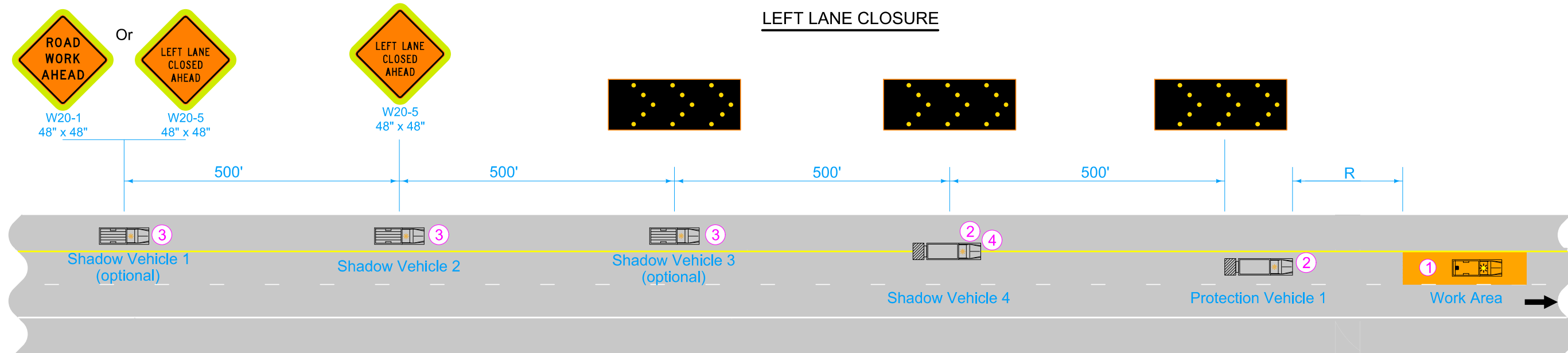
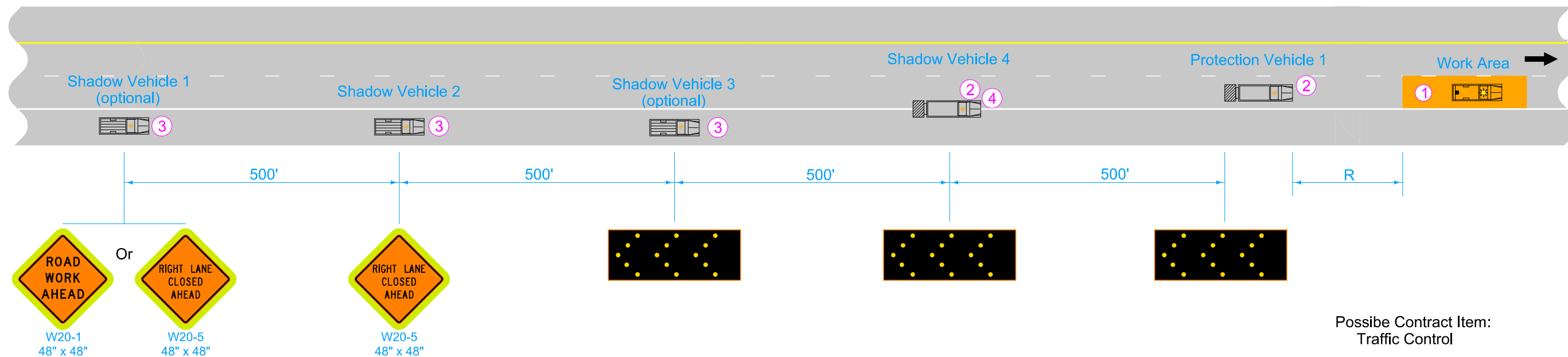


55 MPH OR GREATER
LEFT LANE CLOSURE



RIGHT LANE CLOSURE



Possible Contract Item:
Traffic Control

Equip all vehicles with an amber revolving light or amber strobe light. Fluorescent yellow green (FYG) sign background is required around all static signs.

This layout is intended for use with operations moving at least 500 feet within every 30-minute timeframe. For operations not meeting this criteria, use TC-415, TC-418, or TC-419.

- ① Keep work area as small as possible to safely accommodate the work taking place.
- ② Audible Warning System recommended. Iowa DOT maintenance crews see appendix A for times when an Audible Warning System is required.
- ③ Shadow vehicles 1, 2, and 3 may encroach into the travel lane when the shoulder is too narrow to drive on. Iowa DOT maintenance operations will use dump trucks/heavy duty vehicles for shadow vehicles 1, 2, and 3 when shoulder width and strength allow.
- ④ Adjust the lateral position of Shadow Vehicle 4 to create a taper unless doing so would negatively impact the work being performed.

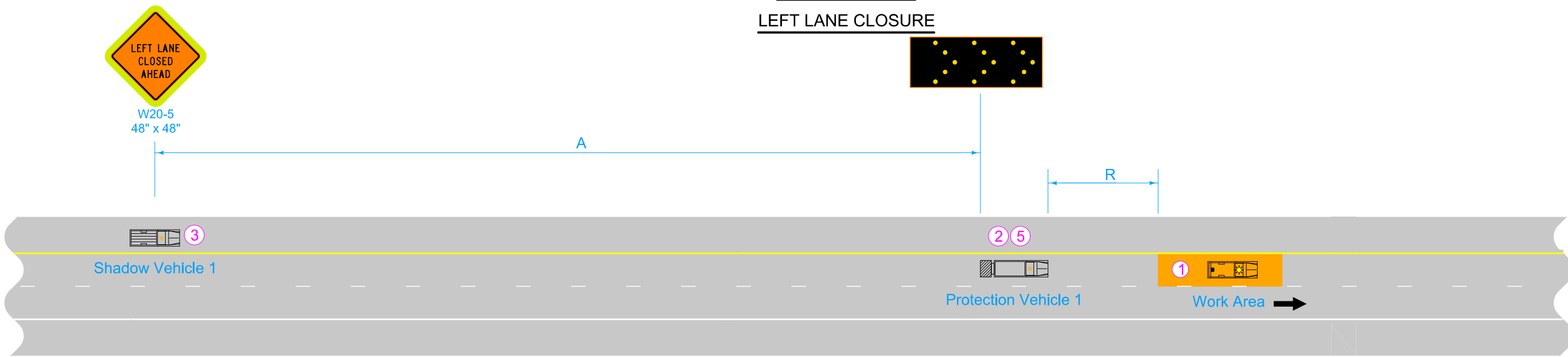
LEGEND

- Arrow Board
- Truck-Mounted Attenuator (TMA)
- Direction of Traffic
- Work Area

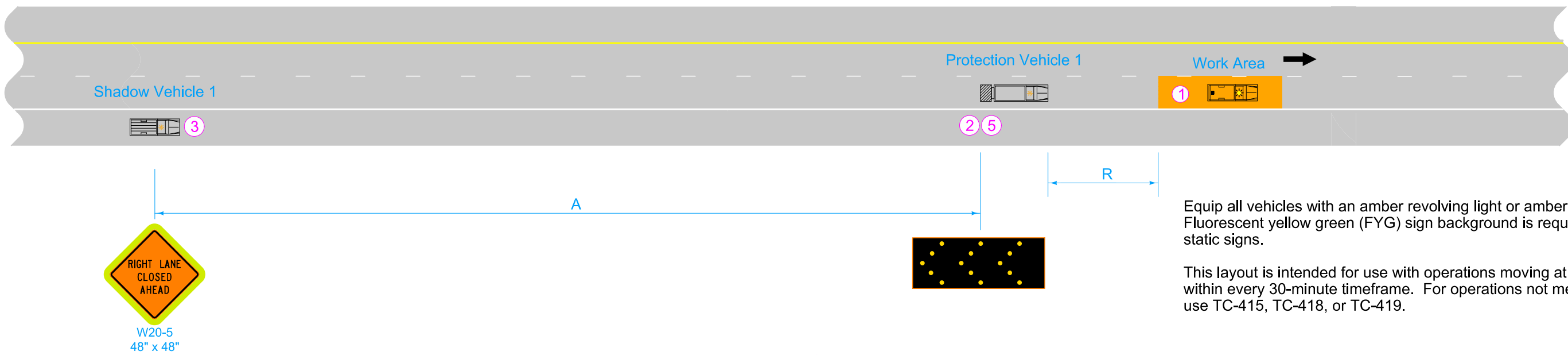
Roll Ahead Distance (R)			
9900 to 22,000 lbs. GVW		Over 22,000 lbs. GVW	
Stationary	Moving 15 mph Max	Stationary	Moving 15 mph Max
200'	240'	160'	200'

	REVISION
	12 04-15-25
STANDARD ROAD PLAN	TC-431
REVISIONS: Removed interim.	SHEET 1 of 2
 APPROVED BY DESIGN METHODS ENGINEER	
SLOW MOVING VEHICLE OPERATING IN THE TRAFFIC LANE	

50 MPH OR LESS
LEFT LANE CLOSURE



RIGHT LANE CLOSURE



Equip all vehicles with an amber revolving light or amber strobe light. Fluorescent yellow green (FYG) sign background is required around all static signs.

This layout is intended for use with operations moving at least 500 feet within every 30-minute timeframe. For operations not meeting this criteria, use TC-415, TC-418, or TC-419.

- ① Keep work area as small as possible to safely accommodate the work taking place.
- ② Audible Warning System recommended. Iowa DOT Maintenance crews, see Appendix A for times when an Audible Warning System is required.
- ③ Shadow vehicles 1 and 2 may encroach into the travel lane when the shoulder is too narrow to drive on. Iowa DOT maintenance operations will use dump trucks/heavy duty vehicles for shadow vehicles 1 and 2 when shoulder width and strength allow.
- ⑤ TMA recommended for speed limits of 30 mph or more.

LEGEND

- Arrow Board
- Truck-Mounted Attenuator (TMA)
- Direction of Traffic
- Work Area

SPEED LIMIT (mph)*	Vehicle Spacing A	Roll Ahead Distance (R)			
		9900 to 22,000 lbs. GVW		Over 22,000 lbs. GVW	
		Stationary	Moving 15 mph Max	Stationary	Moving 15 mph Max
25-40	500'	100'	100'	75'	100'
45	750'	125'	175'	100'	150'
50	1500'	200'	240'	160'	200'

* Speed Limit refers to regulatory speed limit before road work.

IOWA DOT	REVISION	
	12	04-15-25
STANDARD ROAD PLAN		TC-431
REVISIONS: Removed interim.		SHEET 2 of 2
 APPROVED BY DESIGN METHODS ENGINEER		
SLOW MOVING VEHICLE OPERATING IN THE TRAFFIC LANE		