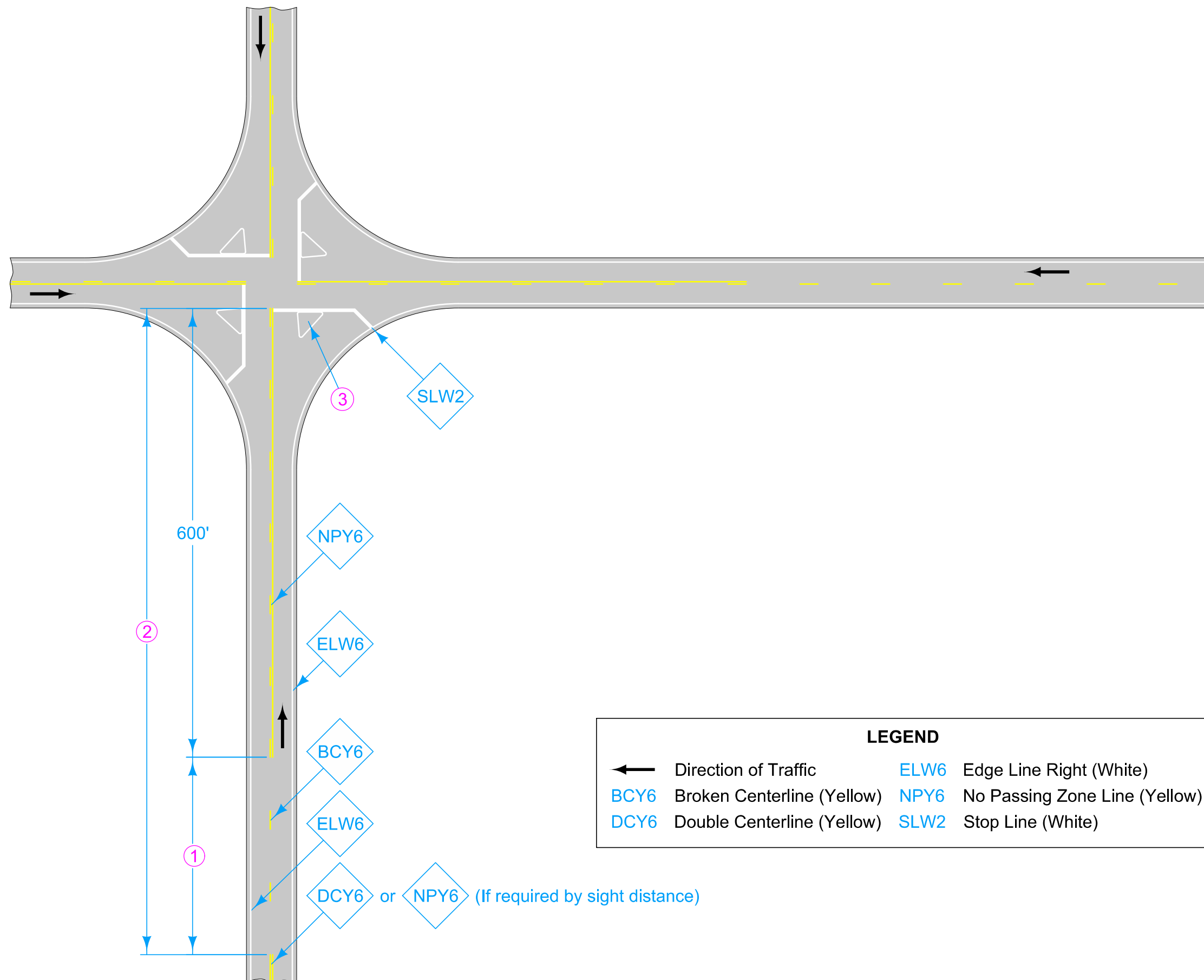


DESIGNER INFORMATION

For line information, see [PM-110](#).

For projects not on the Primary system the following substitutions may be made. See plan sheets for substitutions.

ELW6 → ELW4
 BCY6 → BCY4
 NPY6 → NPY4
 DCY6 → DCY4



- ① If less than 400 feet, join Yellow Lines.
- ② If less than 1000 feet, extend Yellow Line to Stop Line.
- ③ If Island present, see [PM-120](#).

LEGEND	
←	Direction of Traffic
BCY6	Broken Centerline (Yellow)
DCY6	Double Centerline (Yellow)
ELW6	Edge Line Right (White)
NPY6	No Passing Zone Line (Yellow)
SLW2	Stop Line (White)

DCY6 or NPY6 (If required by sight distance)

Possible Contract Item:
 Pavement Marking Line Items

Possible Tabulation:
 108-22

	REVISION	
	3	10-15-24
STANDARD ROAD PLAN		PM-620
REVISIONS: Modified line widths from 4 inches to 6 inches.		SHEET 1 of 1
APPROVED BY DESIGN METHODS ENGINEER		
TWO-LANE ROADWAY WITH NO TURN LANES (FOUR-WAY STOP CONDITION)		