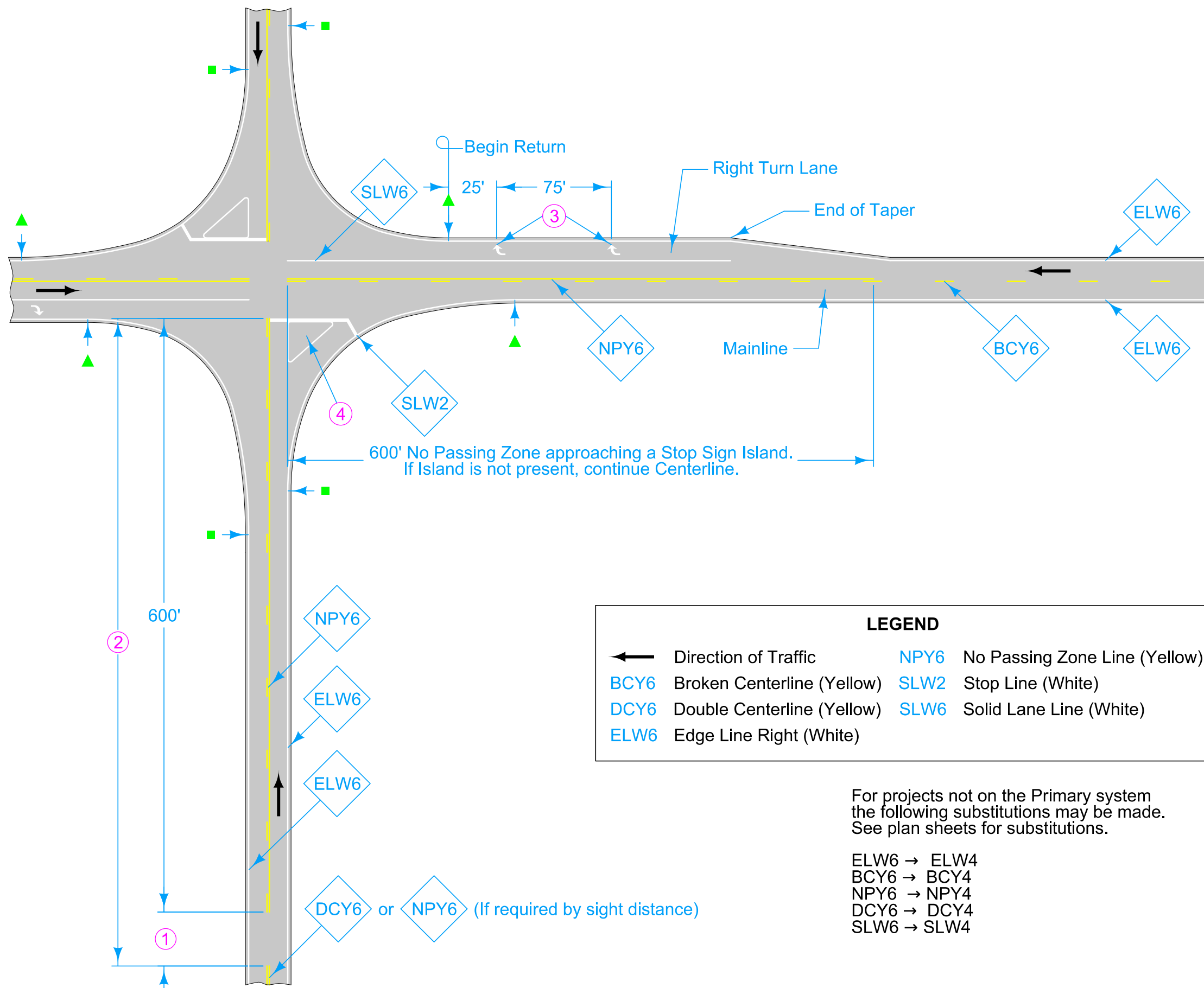


DESIGNER INFORMATION



Roadways may or may not have edge lines. When the free flow roadway has edge lines but the stop controlled roadway does not, end edge lines at the end of returns (marked by ▲s). When the stop controlled roadway has edge lines but the free flow roadway does not, end edge lines at the end of returns (marked by ■s). If both roadways have edge lines, continue edge lines around the returns.

Terminate all mainline centerline markings at the edge of the thru lanes of the side road.

Start Solid Lane Line for Right Turn Lane at end of taper.

For line information, see [PM-110](#).

For symbol and legend information, see [PM-111](#).

- ① If less than 400 feet, join Yellow Lines.
- ② If less than 1000 feet, extend Yellow Line to Stop Line.
- ③ Symbol and Legend (when listed in 108-29).
- ④ For Island information, see [PM-120](#).

Possible Contract Items:
 Pavement Marking Line Items
 Pavement Marking Symbol and Legend Items

Possible Tabulations:
[108-22](#)
[108-29](#)

LEGEND	
←	Direction of Traffic
BCY6	Broken Centerline (Yellow)
DCY6	Double Centerline (Yellow)
ELW6	Edge Line Right (White)
NPY6	No Passing Zone Line (Yellow)
SLW2	Stop Line (White)
SLW6	Solid Lane Line (White)

For projects not on the Primary system the following substitutions may be made. See plan sheets for substitutions.

- ELW6 → ELW4
- BCY6 → BCY4
- NPY6 → NPY4
- DCY6 → DCY4
- SLW6 → SLW4

DCY6 or NPY6 (If required by sight distance)

	REVISION	
	2	10-15-24
STANDARD ROAD PLAN		PM-521
REVISIONS: Modified line widths from 4 inches to 6 inches.		SHEET 1 of 1
 APPROVED BY DESIGN METHODS ENGINEER		
TWO-LANE ROADWAY WITH RIGHT TURN LANES		