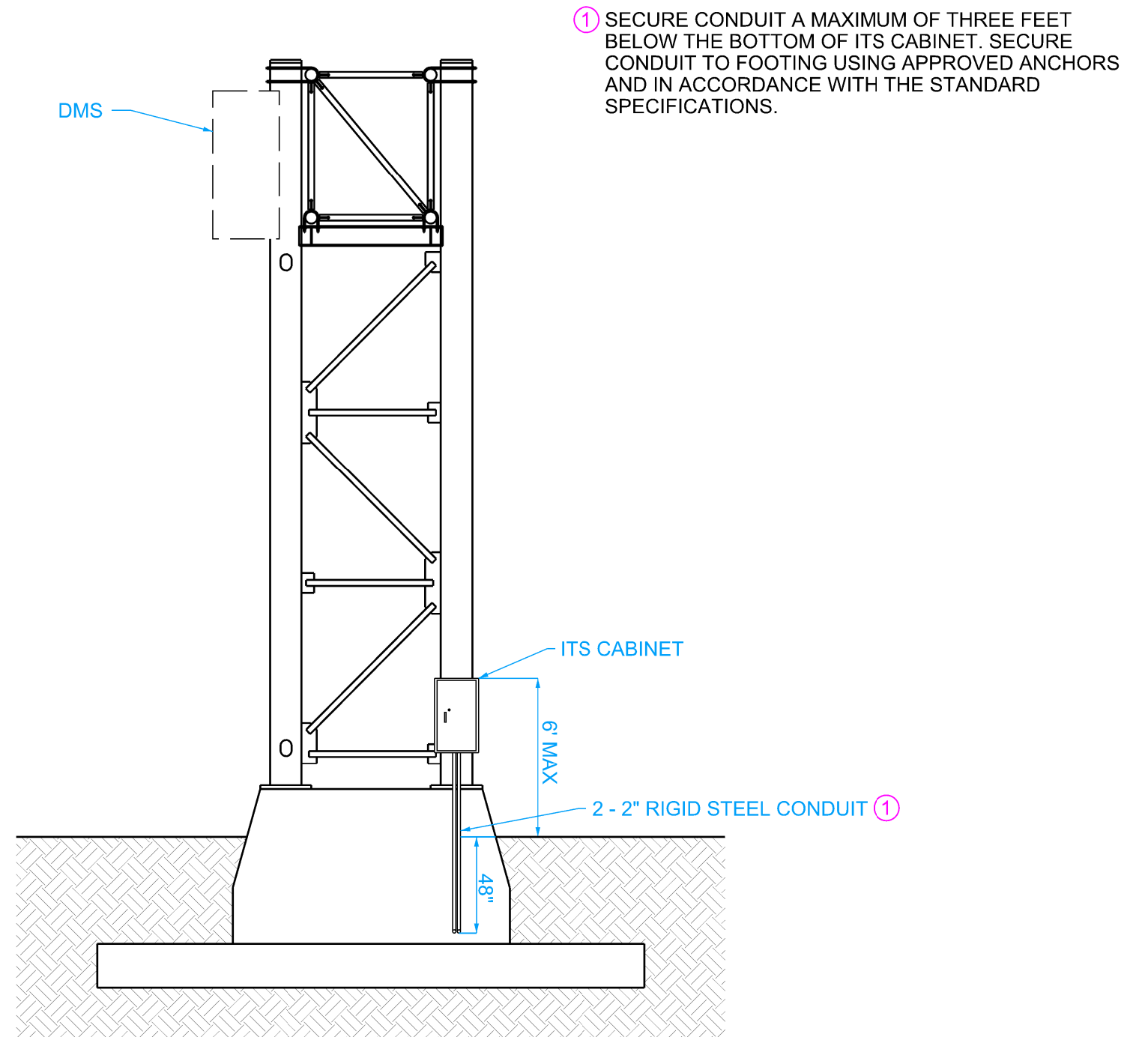


ITS CABINET SIDE VIEW

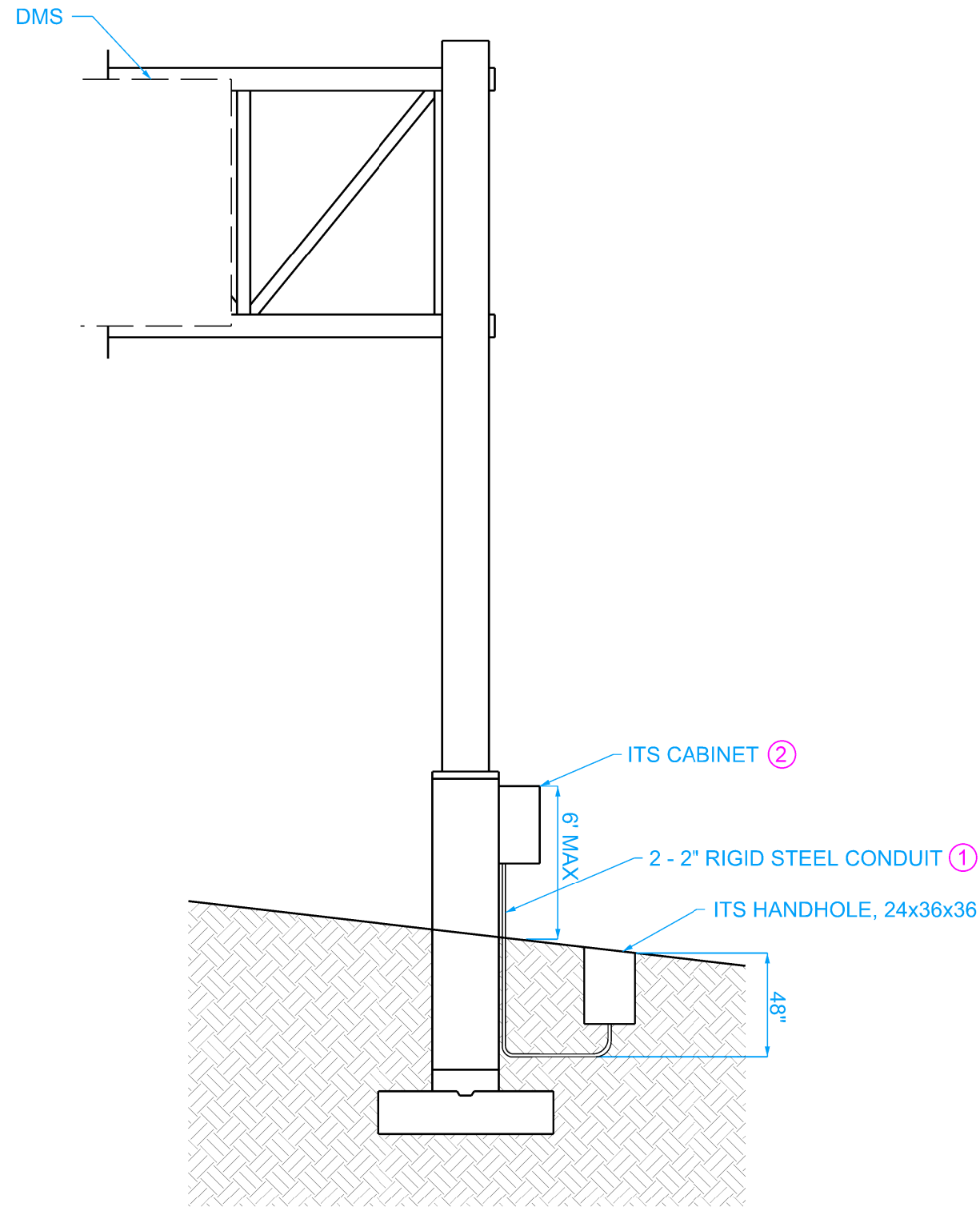


ITS CABINET FRONT VIEW

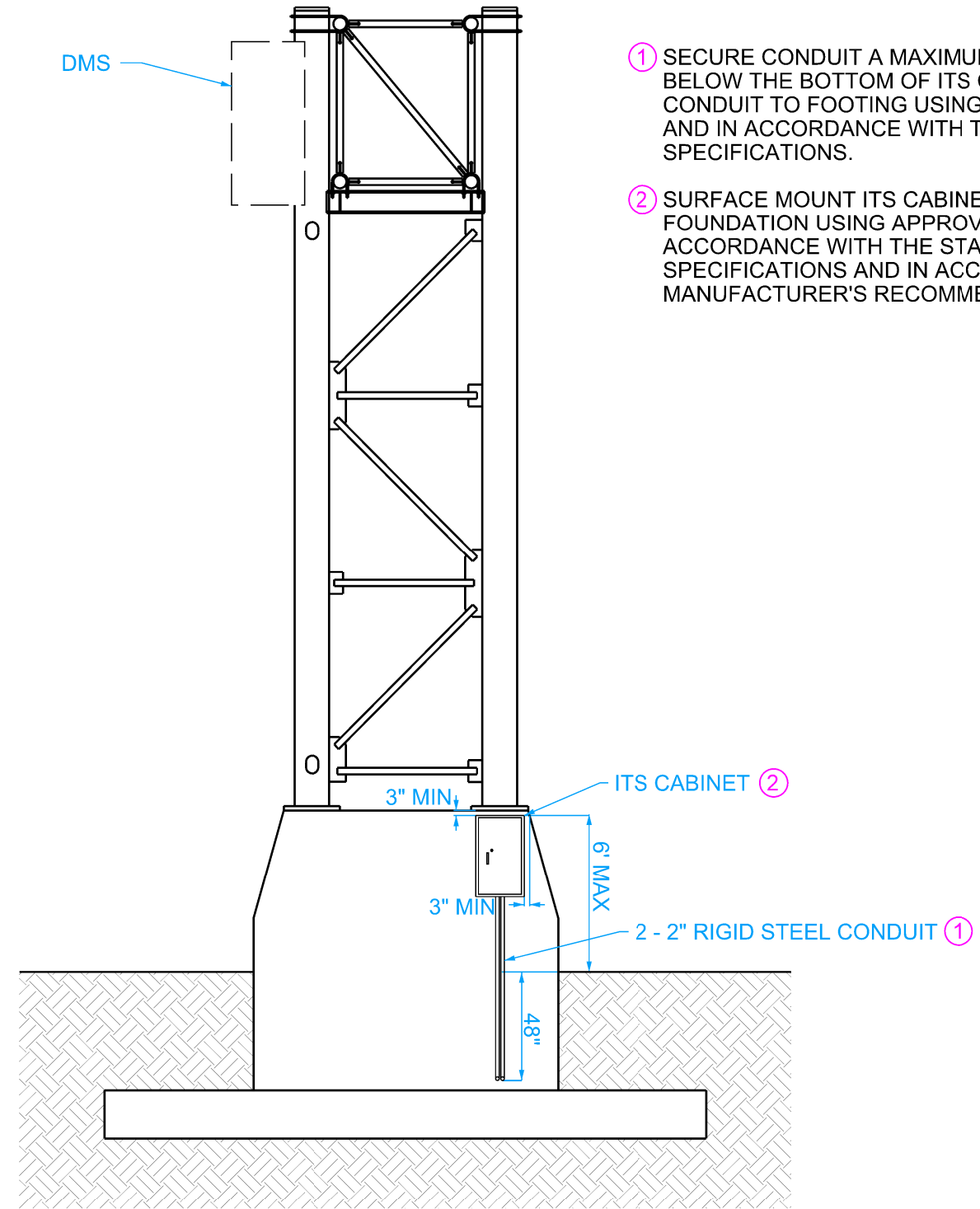
① SECURE CONDUIT A MAXIMUM OF THREE FEET BELOW THE BOTTOM OF ITS CABINET. SECURE CONDUIT TO FOOTING USING APPROVED ANCHORS AND IN ACCORDANCE WITH THE STANDARD SPECIFICATIONS.

MOUNTING ON DMS TRUSS POLE

	REVISION	
	New	10-15-2024
STANDARD ITS PLAN		ITS-304
REVISIONS: New.		SHEET 1 of 3
 <small>APPROVED BY STATE ITS ENGINEER</small>		
ITS INSTALLATION DETAILS FOR DYNAMIC MESSAGE SIGNS		



ITS CABINET SIDE VIEW



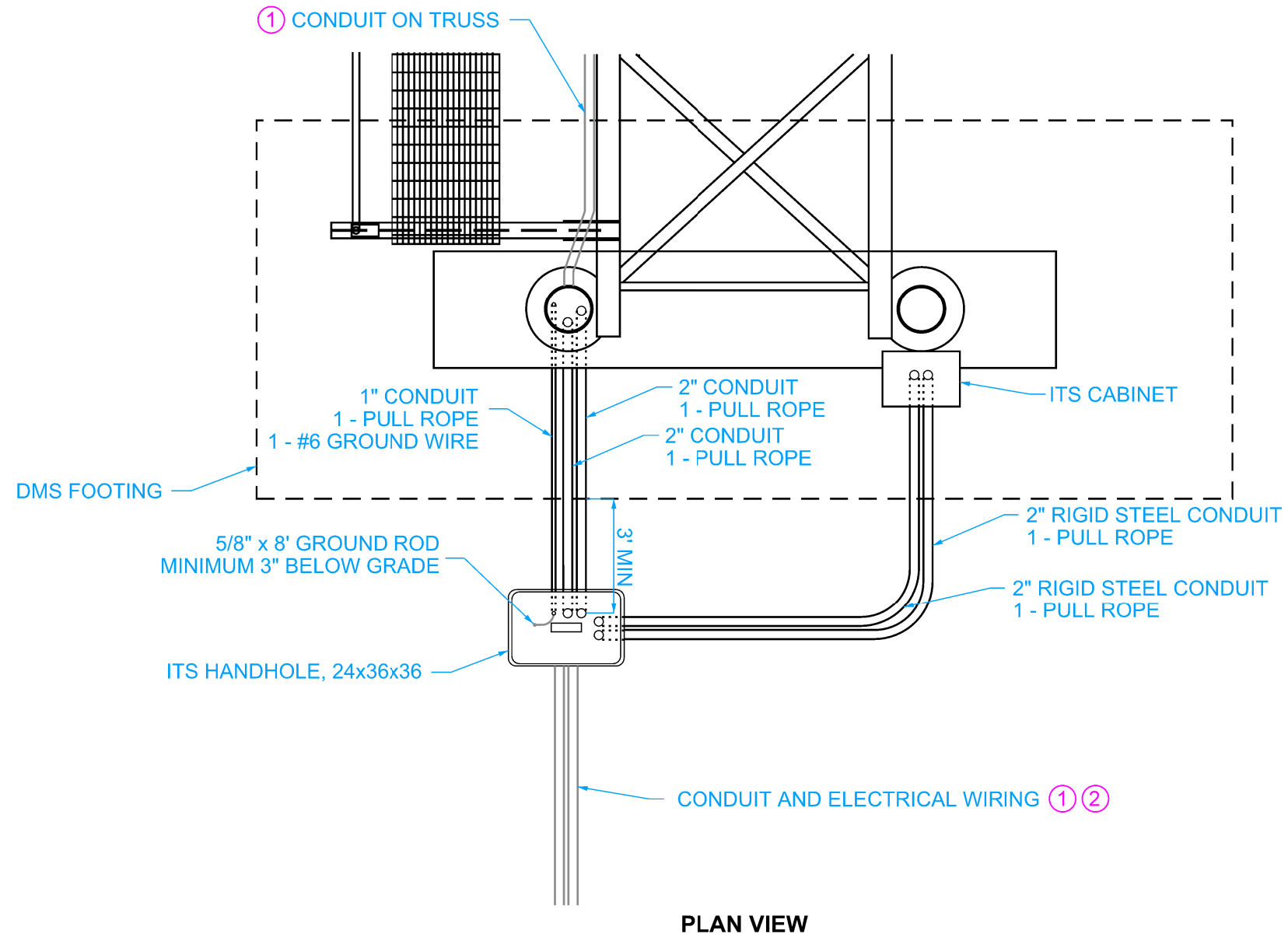
ITS CABINET FRONT VIEW


- ① SECURE CONDUIT A MAXIMUM OF THREE FEET BELOW THE BOTTOM OF ITS CABINET. SECURE CONDUIT TO FOOTING USING APPROVED ANCHORS AND IN ACCORDANCE WITH THE STANDARD SPECIFICATIONS.
- ② SURFACE MOUNT ITS CABINET TO CONCRETE FOUNDATION USING APPROVED ANCHORS, IN ACCORDANCE WITH THE STANDARD SPECIFICATIONS AND IN ACCORDANCE WITH THE MANUFACTURER'S RECOMMENDATIONS.

MOUNTING ON DMS FOOTING

	REVISION
	New 10-15-2024
STANDARD ITS PLAN	ITS-304
REVISIONS: New.	SHEET 2 of 3
 <small>APPROVED BY STATE ITS ENGINEER</small>	
ITS INSTALLATION DETAILS FOR DYNAMIC MESSAGE SIGNS	

- ① CONDUIT INSTALLED BY OTHERS UNLESS INCLUDED IN THE CONTRACT DOCUMENTS.
- ② WIRING FOR ELECTRICAL SERVICE WILL BE COMPLETE BY OTHERS UNLESS INCLUDED IN THE CONTRACT DOCUMENTS.



IOWA DOT	REVISION	
	New	10-15-2024
STANDARD ITS PLAN		ITS-304
		SHEET 3 of 3
REVISIONS: New.		
 <small>APPROVED BY STATE ITS ENGINEER</small>		
ITS INSTALLATION DETAILS FOR DYNAMIC MESSAGE SIGNS		