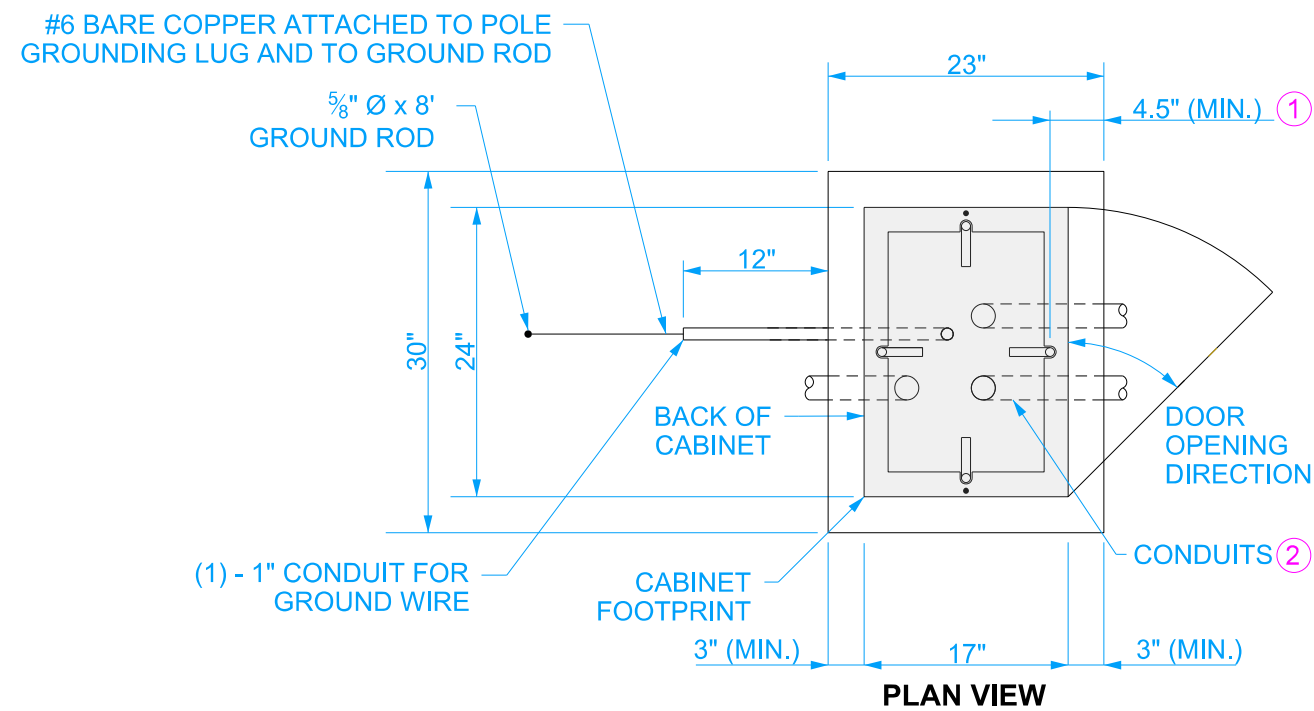


FRONT VIEW

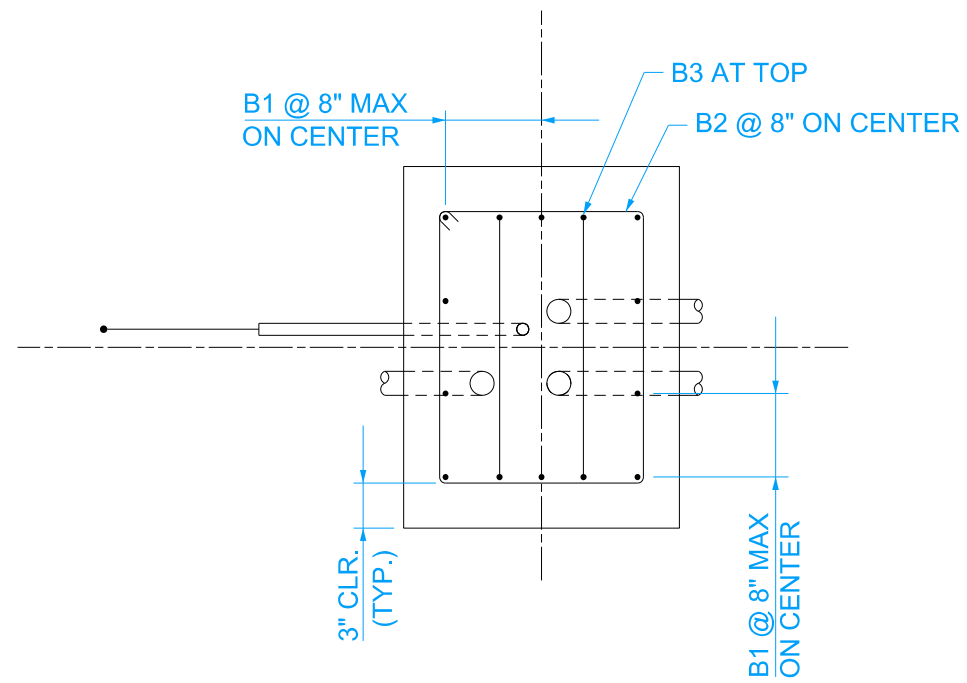
SIDE VIEW



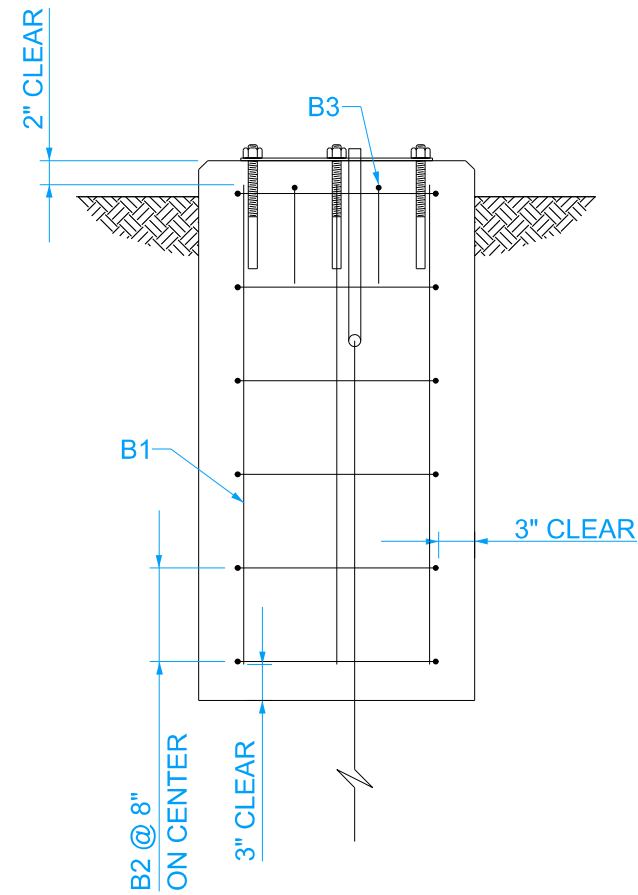
PLAN VIEW

- ① THE FINAL ANCHOR SIZE AND LAYOUT SHALL BE IN ACCORDANCE WITH CABINET MANUFACTURER RECOMMENDATIONS. THE MINIMUM DISTANCE FROM THE EDGE OF CONCRETE FOUNDATION TO CENTERLINE OF ANY ANCHOR SHALL BE 4.5". INCREASE FOUNDATION SIZE AS NEEDED TO MAINTAIN THIS MINIMUM.
- ② CONDUIT SIZE, QUANTITY, AND DIRECTION SHALL BE ACCORDING TO THE CONTRACT DOCUMENTS. CONDUIT AND ELECTRICAL DETAILS SHOWN HERE ARE FOR INFORMATION ONLY AND MAY NOT INCLUDE ALL THE ITEMS REQUIRED. INSTALL ONE SPARE CONDUIT THAT EXITS THE FOUNDATION OPPOSITE OF THE CABINET DOOR.

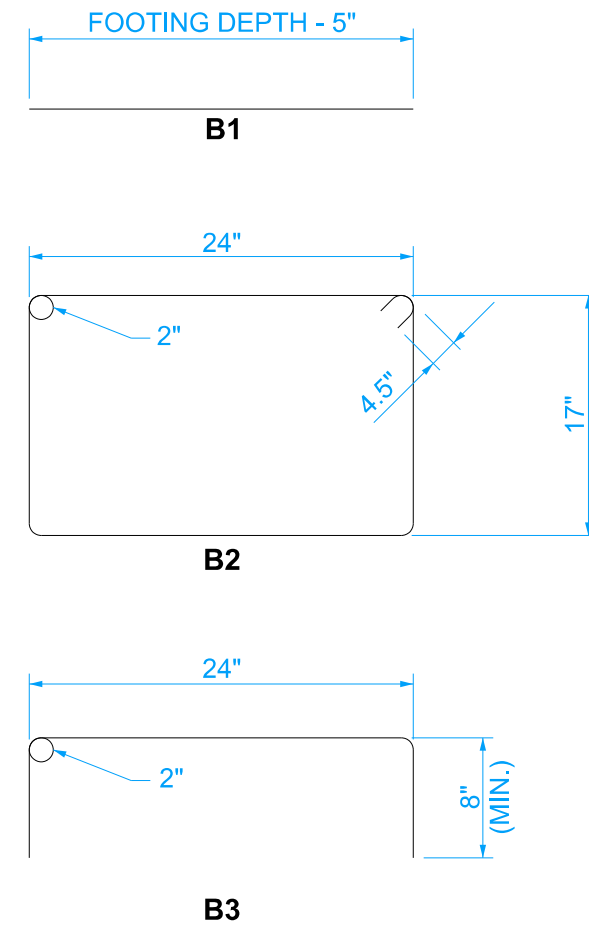
	REVISION
	New 10-15-2024
STANDARD ITS PLAN	ITS-303
REVISIONS: New.	SHEET 1 of 2
 APPROVED BY STATE ITS ENGINEER	
ITS CABINET FOUNDATION	



REINFORCING PLAN VIEW



ELEVATION FOR REINFORCING



BAR BEND DETAILS
(ALL BARS SHALL BE #4)

	REVISION	
	New	10-15-2024
STANDARD ITS PLAN		ITS-303
REVISIONS: New.		SHEET 2 of 2
 APPROVED BY STATE ITS ENGINEER		
ITS CABINET FOUNDATION		