

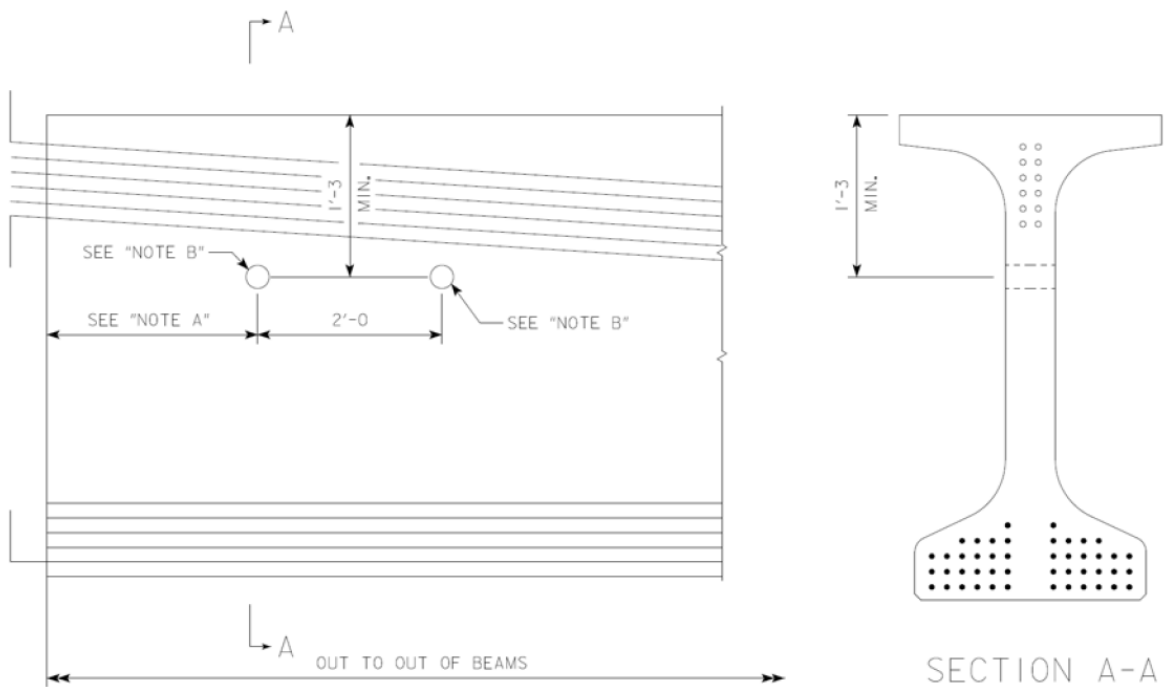
For **BT**D and **BTE** beams only.

Optional Shipping Tie Down Holes for BTD and **BTE** Beams

Fabricators have the option of providing tie down details for BT

D and BTE beams as shown in the figure and according to the following notes:

- A. The tie down sleeve hole locations shall follow the beam overhang limits in the beam sheets in the bridge plans. Any changes to the sleeve hole locations shall be approved by the Engineer before casting.
- B. The maximum diameter of the sleeve hole shall be 3 inches.
- C. Sleeve holes shall be cast a minimum of 2 inches clear from any strands.
- D. Centerline of the sleeve holes shall be a minimum of 1'-3" below the top of the top flange.



BT BEAM TIE DOWN
HOLE LOCATION ELEVATION