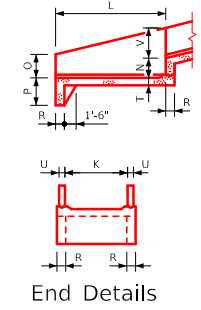
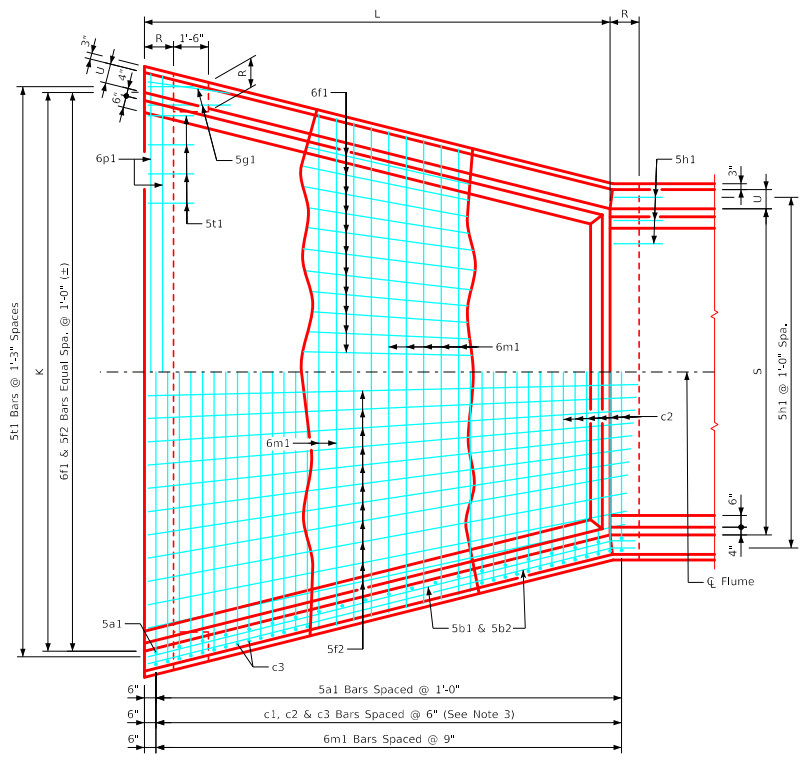


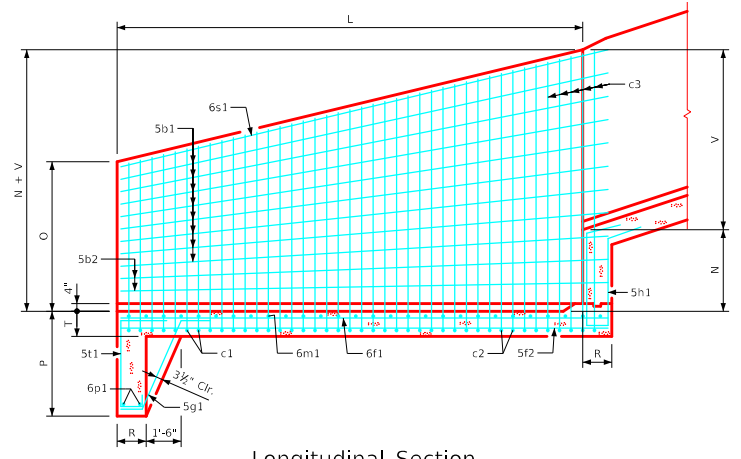
14'-0" x 10'-0" Flume Basin Example Shown



End Details



Plan View



Longitudinal Section

- Flume Basin Notes:**
1. See Sheet RCFB 01-20 for general information.
 2. c2 & c3 bars are lapped.
 3. c1 bars are omitted if both "S" and "H" are equal to or larger than 8' and 9' respectively.
 4. See Sheet RCFB 08-20 for flume basin quantities.

LATEST REVISION DATE APPROVED BY BRIDGE ENGINEER		
	Standard Design Single Reinforced Concrete Box Culverts December, 2020	
	Flume Basin Details 14'-0" Span	RCFB 09-20