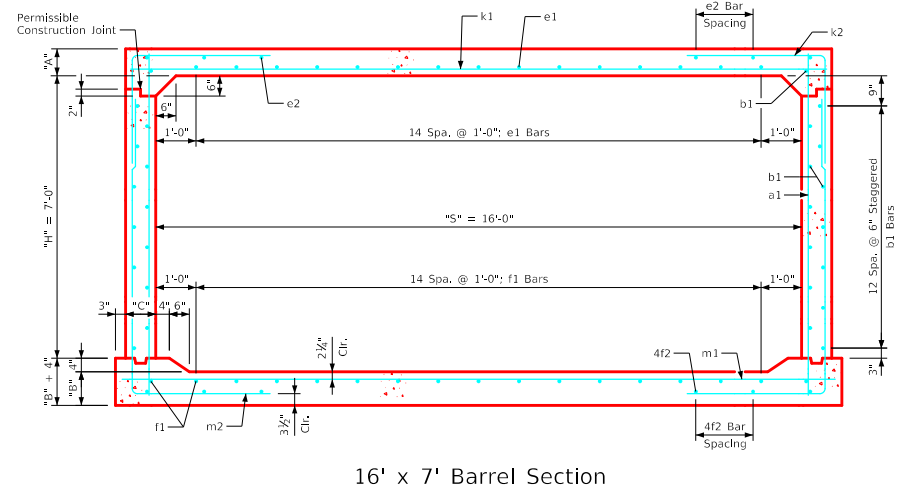
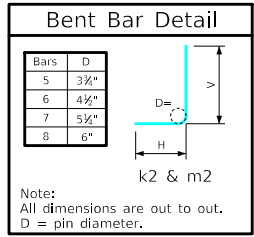


### Variable Dimensions and Quantities for 16' x 7' Barrel Sections

Dimensions										Bar List																		Quantities																					
Fill	S	H	A	B	C	D	a1		b1		e1		e2		f1		f2		k1			k2			k9			m1		m2			m9			Concrete (CY/FT)				Steel (LB/FT)									
							Size	Sp.	L	Size	Sp.	No.	Size	Sp.	No.	Size	Sp.	No.	Size	Sp.	L	Size	Sp.	L	Size	Sp.	L	Size	Sp.	L	Size	Sp.	L	Size	Sp.	L	Slab	Floor	Walls	Total									
0	16	7	14.5	15	9	9	4	12	9'-4"	4	6	28	5	12	15	4	12	8	4	12	17	4	15	8	8	9	17'-2"	7	12	8'-1"	3'-8"	4'-5"	7	17'-2"	8	9	17'-8"	8	12	12'-0"	4'-4"	7'-8"	8	17'-8"	0.816	0.870	0.368	2.054	307.50
1	16	7	14	14.5	9	6	4	6	9'-3"	4	6	28	5	12	15	4	13	8	4	12	17	4	15	8	8	9	17'-2"	5	6	7'-8"	3'-10"	3'-10"	5	17'-2"	8	9	17'-8"	5	6	12'-0"	4'-4"	7'-8"	5	17'-8"	0.789	0.842	0.368	1.999	295.34
2	16	7	10	11.5	9	9	4	12	8'-8"	4	6	28	6	12	15	4	15	8	4	12	17	4	15	8	9	9	17'-2"	6	6	8'-1"	4'-5"	3'-8"	6	17'-2"	7	6	17'-8"	7	6	11'-10"	4'-5"	7'-5"	7	17'-8"	0.573	0.675	0.368	1.616	379.71
3-5	16	7	10	12.5	9	9	4	12	8'-9"	4	6	28	4	12	15	4	14	8	4	12	17	4	14	8	9	9	17'-2"	6	6	8'-6"	4'-3"	4'-3"	6	17'-2"	7	6	17'-8"	6	6	11'-7"	4'-1"	7'-6"	6	17'-8"	0.573	0.731	0.368	1.672	341.89
6-8	16	7	10	12.5	9	9	4	12	8'-9"	4	6	28	4	12	15	4	13	8	4	12	17	4	12	8	8	6	17'-2"	7	6	8'-0"	4'-0"	4'-0"	7	17'-2"	8	6	17'-8"	7	6	11'-3"	3'-9"	7'-6"	7	17'-8"	0.573	0.731	0.368	1.672	413.95
9-10	16	7	12	14.5	9	9	4	12	9'-1"	4	6	28	4	12	15	4	15	6	4	12	17	4	15	6	8	6	17'-2"	6	6	7'-0"	3'-2"	3'-10"	6	17'-2"	9	6	17'-8"	6	6	10'-9"	3'-1"	7'-8"	6	17'-8"	0.681	0.842	0.368	1.891	385.53
11-13	16	7	13	15.5	10	9	4	12	9'-3"	4	6	28	4	12	15	4	15	6	4	12	17	4	15	6	9	6	17'-2"	8	9	7'-11"	3'-3"	4'-8"	8	17'-4"	9	6	17'-10"	8	9	10'-11"	3'-2"	7'-9"	8	17'-10"	0.744	0.908	0.409	2.061	447.89
14-16	16	7	14.5	17	10.5	9	4	9	9'-6"	4	6	28	4	12	15	4	14	6	4	12	17	4	14	6	9	6	17'-5"	7	6	7'-6"	3'-1"	4'-5"	7	17'-5"	9	6	17'-11"	6	6	10'-11"	3'-1"	7'-10"	6	17'-11"	0.831	0.996	0.431	2.258	440.03



- Notes:**
- Dimensions listed on this sheet to be used in conjunction with Sheet RCB G3-20.
  - The k2 and m2 bars horizontal legs may lap in low fill situations.
  - Fill, dimensions "S" and "H" are in feet.
  - Dimensions "A", "B", "C", "D", and "Sp." listed in the bar list are in inches.
  - Dimensions "L", "H", "V" are in feet and inches.

LATEST REVISION DATE	<small>APPROVED BY BRIDGE ENGINEER</small>	<p style="margin: 0;">Standard Design <b>Single Reinforced Concrete Box Culverts</b> July, 2020</p>	
		<p><b>Culvert Barrel Details</b> 16' x 7' Barrel Sections</p>	<p><b>RCB 16-7-20</b></p>

ENGLISH\RFDSIGNEDSINGLECULVERTS.DGN - RCB 16-7-20 - THIS SHEET ISSUED 07-2020.