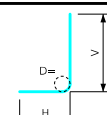


### Variable Dimensions and Quantities for 16' x 5' Barrel Sections

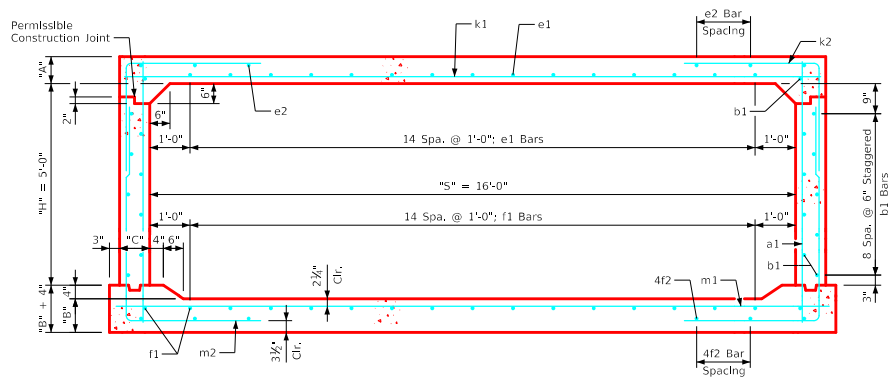
Dimensions										Bar List																		Quantities																					
Fill	S	H	A	B	C	D	a1		b1		e1		e2		f1		f2		k1			k2			k9			m1		m2			m9			Concrete (CY/FT)				Steel (LB/FT)									
							Size	Sp.	L	Size	Sp.	No.	Size	Sp.	No.	Size	Sp.	No.	Size	Sp.	L	Size	Sp.	L	Size	Sp.	L	Size	Sp.	L	Size	Sp.	L	Size	Sp.	L	Slab	Floor	Walls	Total									
0	16	5	15	14.5	9	9	4	12	7'-4	4	6	20	5	12	15	4	14	6	4	12	17	4	15	8	9	12	17'-2	5	6	6'-8	3'-0	3'-8	5	17'-2	6	6	17'-8	6	6	10'-0	4'-4	5'-8	6	17'-8	0.843	0.842	0.257	1.942	267.45
1	16	5	14	14.5	9	6	4	6	7'-3	4	6	20	5	12	15	4	18	6	4	12	17	4	14	8	8	9	17'-2	5	6	7'-2	3'-7	3'-7	5	17'-2	6	6	17'-8	5	6	9'-10	4'-2	5'-8	5	17'-8	0.789	0.842	0.257	1.888	260.08
2	16	5	9.5	10.5	9	9	4	12	6'-7	4	6	20	6	12	15	4	15	8	4	12	17	4	16	8	9	9	17'-2	7	6	8'-10	4'-5	4'-5	7	17'-2	7	6	17'-8	7	6	10'-0	4'-8	5'-4	7	17'-8	0.546	0.620	0.257	1.423	380.79
3-5	16	5	9.5	11.5	9	9	4	12	6'-8	4	6	20	4	12	15	4	15	8	4	12	17	4	14	8	7	6	17'-2	8	9	8'-8	4'-4	4'-4	8	17'-2	7	6	17'-8	8	9	9'-8	4'-3	5'-5	8	17'-8	0.546	0.675	0.257	1.478	339.87
6-8	16	5	10	12.5	9	9	4	12	6'-9	4	6	20	4	12	15	4	13	8	4	12	17	4	13	8	8	6	17'-2	7	6	8'-0	4'-0	4'-0	7	17'-2	8	6	17'-8	7	6	9'-4	3'-10	5'-6	7	17'-8	0.573	0.731	0.257	1.561	390.03
9-10	16	5	11	13	9.5	9	4	12	6'-11	4	6	20	4	12	15	4	14	8	4	12	17	4	12	8	8	6	17'-3	7	6	8'-4	4'-2	4'-2	7	17'-3	8	6	17'-9	8	6	9'-3	3'-9	5'-6	8	17'-9	0.631	0.763	0.271	1.665	417.29
11-13	16	5	13	14.5	10	9	4	12	7'-2	4	6	20	4	12	15	4	16	6	4	12	17	4	17	6	8	6	17'-4	7	6	7'-7	3'-4	4'-3	7	17'-4	9	6	17'-10	7	6	9'-2	3'-6	5'-8	7	17'-10	0.744	0.852	0.285	1.881	411.37
14-16	16	5	14.5	17	11	9	4	12	7'-6	4	6	20	4	12	15	4	15	6	4	12	17	4	15	6	9	6	17'-6	7	6	7'-9	3'-4	4'-5	7	17'-6	9	6	18'-0	7	6	9'-1	3'-3	5'-10	7	18'-0	0.836	1.001	0.315	2.152	440.53

#### Bent Bar Detail

Bars	D
5	3 3/8"
6	4 1/2"
7	5 1/2"
8	6"



Note:  
All dimensions are out to out.  
D = pin diameter.



16' x 5' Barrel Section

#### Notes:

1. Dimensions listed on this sheet to be used in conjunction with Sheet RCB G3-20.
2. The k2 and m2 bars horizontal legs may lap in low fill situations.
3. Fill, dimensions "S" and "H" are in feet.
4. Dimensions "A", "B", "C", "D", and "Sp." listed in the bar list are in inches.
5. Dimensions "L", "H", "V" are in feet and inches.

LATEST REVISION DATE	APPROVED BY BRIDGE ENGINEER	Standard Design <b>Single Reinforced Concrete Box Culverts</b> July, 2020
Culvert Barrel Details		RCB 16-5-20
16' x 5' Barrel Sections		

ENGLISHLRFDDESIGNEDSINGLECULVERTS.DGN - RCB 16-5-20 - THIS SHEET ISSUED 07-2020.