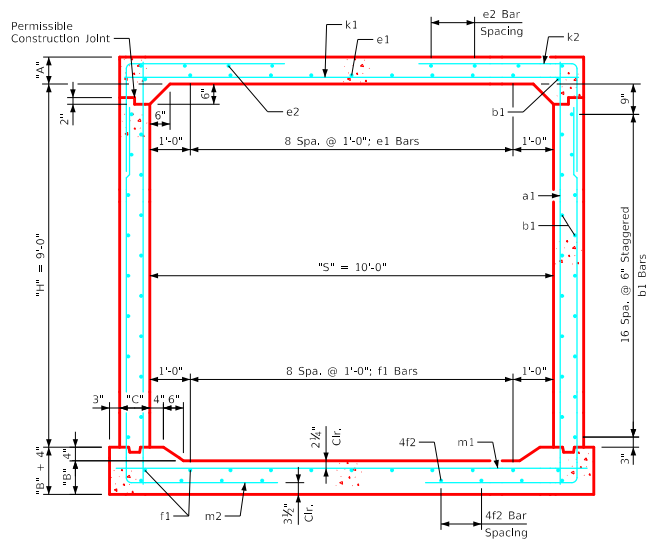
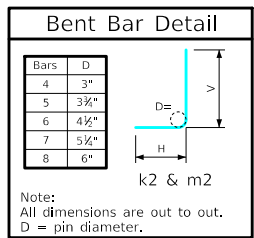


Variable Dimensions and Quantities for 10' x 9' Barrel Sections

Dimensions										Bar List																		Quantities																					
Fill	S	H	A	B	C	D	a1		b1		e1		e2		f1		f2		k1		k2		k9		m1		m2		m9		Concrete (CY/FT)				Steel (LB/FT)														
Size	Sp.	L	Size	Sp.	No.	Size	Sp.	No.	Size	Sp.	No.	Size	Sp.	No.	Size	Sp.	No.	Size	Sp.	L	Size	Sp.	L	Size	Sp.	L	Size	Sp.	L	Size	Sp.	L	Slab	Floor	Walls	Total													
0	10	9	12.5	12.5	9	6	4	6	11'-0"	4	6	36	5	12	9	4	17	8	4	12	11	4	17	8	8	12	11'-2"	4	6	9'-6"	6'-5"	3'-1"	-	-	7	9	11'-8"	4	6	15'-11"	6'-5"	9'-6"	-	-	0.476	0.500	0.479	1.455	214.63
1	10	9	12	12	9	9	4	12	10'-11"	4	6	36	5	12	9	4	17	8	4	12	11	4	17	8	8	12	11'-2"	6	12	10'-8"	6'-10"	3'-10"	-	-	7	9	11'-8"	7	12	16'-5"	7'-0"	9'-5"	-	-	0.458	0.481	0.479	1.418	238.42
2-3	10	9	8	10	9	9	4	9	10'-5"	4	6	36	5	12	9	4	17	8	4	12	11	4	16	8	6	6	11'-2"	6	9	10'-4"	6'-10"	3'-6"	-	-	6	6	11'-8"	6	9	13'-11"	4'-8"	9'-3"	6	11'-8"	0.316	0.407	0.479	1.202	241.71
4-5	10	9	8	10	9	9	4	12	10'-5"	4	6	36	4	12	9	4	13	8	4	12	11	4	12	8	7	9	11'-2"	5	6	7'-0"	3'-11"	3'-1"	5	11'-2"	6	6	11'-8"	5	6	13'-0"	3'-9"	9'-3"	5	11'-8"	0.316	0.407	0.479	1.202	215.05
6-8	10	9	8	10.5	9	9	4	12	10'-5"	4	6	36	4	12	9	4	17	6	4	12	11	4	17	6	6	6	11'-2"	5	6	7'-0"	3'-6"	3'-6"	5	11'-2"	6	6	11'-8"	5	6	12'-10"	3'-6"	9'-4"	5	11'-8"	0.316	0.425	0.479	1.220	213.84
9-10	10	9	8.5	10.5	9	9	5	12	10'-6"	4	6	36	4	12	9	4	17	6	4	12	11	4	16	6	8	9	11'-2"	6	9	7'-0"	3'-6"	3'-6"	6	11'-2"	7	6	11'-8"	6	9	12'-7"	3'-3"	9'-4"	6	11'-8"	0.334	0.425	0.479	1.238	241.24
11-15	10	9	9	11.5	9	9	4	9	10'-7"	4	6	36	4	12	9	4	15	6	4	12	11	4	14	6	7	6	11'-2"	5	6	6'-4"	3'-2"	3'-2"	5	11'-2"	7	6	11'-8"	5	6	12'-4"	2'-11"	9'-5"	5	11'-8"	0.352	0.463	0.479	1.294	238.68
16-20	10	9	10.5	13	9.5	6	4	6	10'-10"	4	6	36	4	12	9	4	13	6	4	12	11	4	13	6	7	6	11'-3"	5	6	6'-2"	2'-10"	3'-4"	5	11'-3"	8	6	11'-9"	5	6	12'-5"	2'-11"	9'-6"	5	11'-9"	0.409	0.522	0.506	1.437	263.97
21-25	10	9	12.5	15	10.5	9	6	9	11'-2"	4	6	36	4	12	9	4	13	6	4	12	11	4	14	6	9	9	11'-5"	6	9	6'-11"	3'-0"	3'-11"	6	11'-5"	8	6	11'-11"	6	9	12'-9"	3'-1"	9'-8"	6	11'-11"	0.490	0.605	0.560	1.655	292.89
26-30	10	9	14	16.5	12	9	4	12	11'-5"	4	6	36	4	12	9	4	14	6	4	12	11	4	14	6	9	9	11'-8"	7	9	7'-6"	3'-2"	4'-4"	7	11'-8"	8	6	12'-2"	7	9	13'-1"	3'-3"	9'-10"	7	12'-2"	0.559	0.678	0.640	1.877	301.76
31-35	10	9	15	18	13	9	5	12	11'-8"	4	6	36	4	12	9	4	14	6	4	12	11	4	15	6	8	6	11'-10"	8	12	8'-2"	3'-4"	4'-10"	8	11'-10"	8	6	12'-4"	8	12	13'-4"	3'-5"	9'-11"	8	12'-4"	0.606	0.747	0.693	2.046	328.03
36-40	10	9	16.5	19	14	9	4	12	11'-10"	4	6	36	4	12	9	4	15	6	4	12	11	4	15	6	8	6	12'-0"	6	6	7'-9"	3'-6"	4'-3"	6	12'-0"	8	6	12'-6"	6	6	13'-7"	3'-7"	10'-0"	6	12'-6"	0.673	0.798	0.746	2.217	325.63
41-45	10	9	17.5	20.5	15	6	4	6	12'-1"	4	6	36	4	12	9	4	16	6	4	12	11	4	16	6	8	6	12'-2"	7	9	8'-6"	3'-10"	4'-8"	7	12'-2"	8	6	12'-8"	7	9	13'-11"	3'-9"	10'-2"	7	12'-8"	0.723	0.870	0.799	2.392	342.16
46-50	10	9	19	21.5	15.5	9	4	9	12'-3"	4	6	36	4	12	9	4	15	6	4	12	11	4	16	6	8	6	12'-3"	6	6	8'-2"	3'-9"	4'-5"	6	12'-3"	9	6	12'-9"	6	6	14'-1"	3'-10"	10'-3"	6	12'-9"	0.787	0.917	0.825	2.529	358.53
51-55	10	9	20	22.5	16.5	9	5	12	12'-5"	4	6	36	4	12	9	4	16	6	5	12	11	4	16	6	9	6	12'-5"	6	6	8'-5"	3'-11"	4'-6"	6	12'-5"	9	6	12'-11"	6	6	14'-4"	4'-0"	10'-4"	6	12'-11"	0.839	0.971	0.878	2.688	390.71



10' x 9' Barrel Section

- Notes:**
- Dimensions listed on this sheet to be used in conjunction with Sheet RCB G3-20.
 - The k2 and m2 bars horizontal legs may lap in low fill situations.
 - Fill, dimensions "S" and "H" are in feet.
 - Dimensions "A", "B", "C", "D", and "Sp." listed in the bar list are in inches.
 - Dimensions "L", "H", "V" are in feet and inches.

LATEST REVISION DATE	 APPROVED BY BRIDGE ENGINEER	 Standard Design Single Reinforced Concrete Box Culverts July, 2020	
		Culvert Barrel Details 10' x 9' Barrel Sections	RCB 10-9-20

ENGLISHLRFDDESIGNEDSINGLECULVERTS.DGN - RCB 10-9-20 - THIS SHEET ISSUED 07-2020.