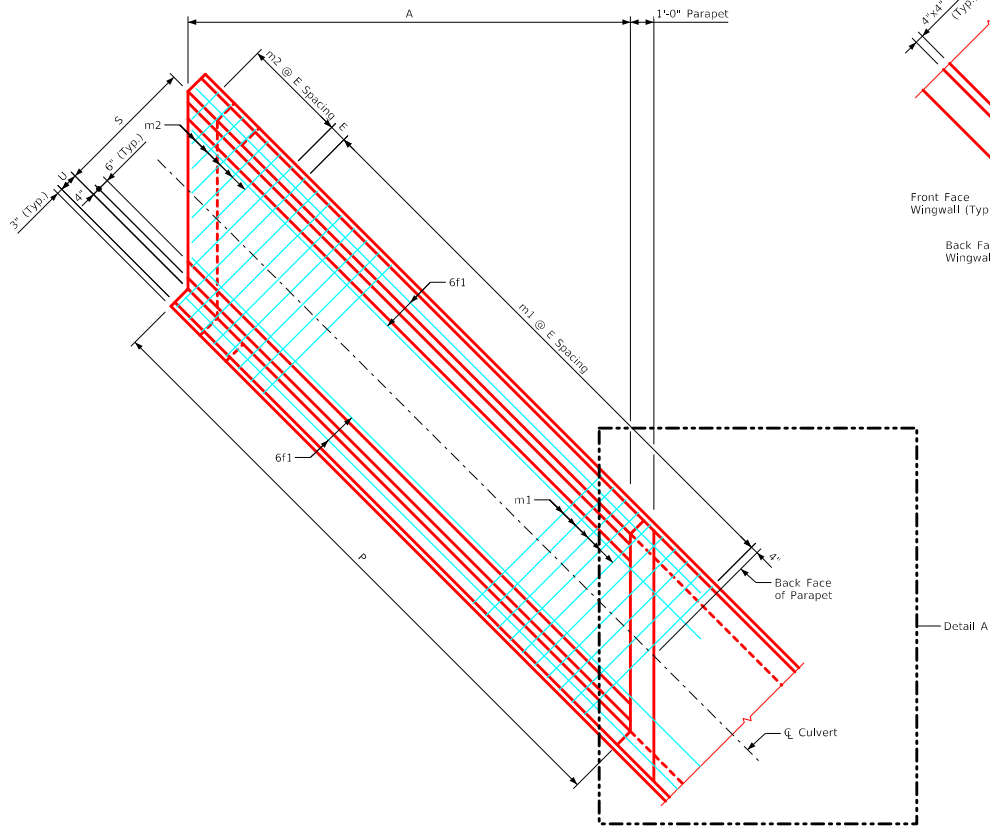
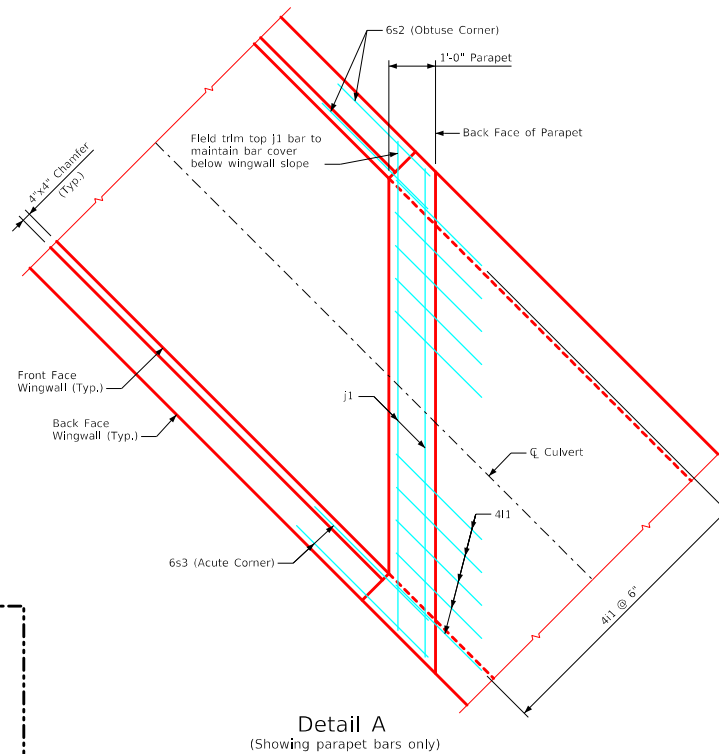


ENGLISHLRFDDESIGNEDSINGLECULVERTS.DGN - PWH 45-4-20 - THIS SHEET ISSUED 07-2020.




Plan View - Top Apron Reinforcing  
(Wall Reinforcing not shown for clarity)



Detail A  
(Showing parapet bars only)

Notes:

1. Bar spacings and positions shown are similar for all sizes of headwalls in this standard.
2. For headwall dimensions and bar spacing see Sheet PWH 45-1-20.
3. Top transverse apron bars are referenced approximately 4" from the back of the parapet for all headwalls.

LATEST REVISION DATE	APPROVED BY BRIDGE ENGINEER	 Standard Design - Single Reinforced Concrete Box Culverts	
		Parallel Wing Headwalls July, 2020	
		Parapet Reinforcing & Top Apron Reinforcing 45° Skew	PWH 45-4-20