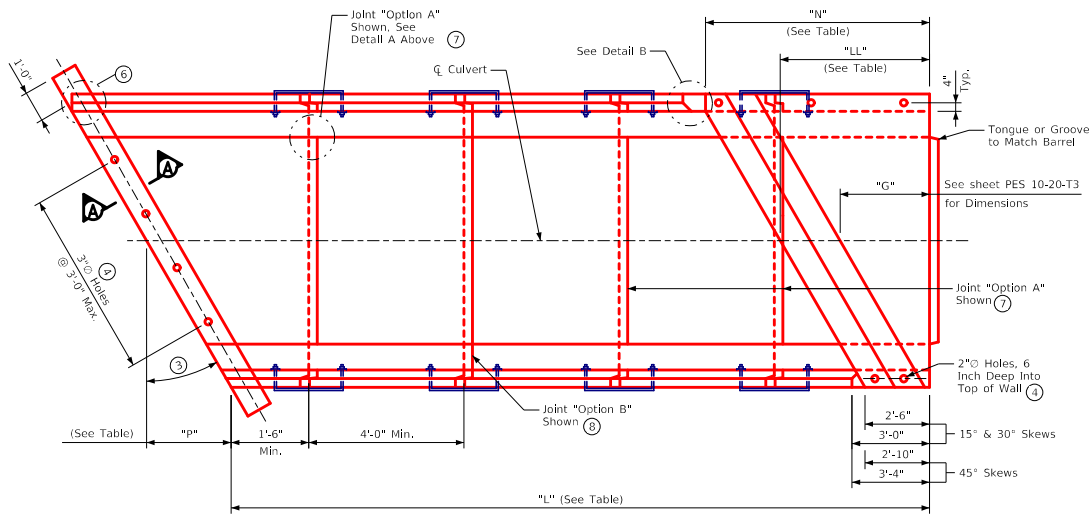
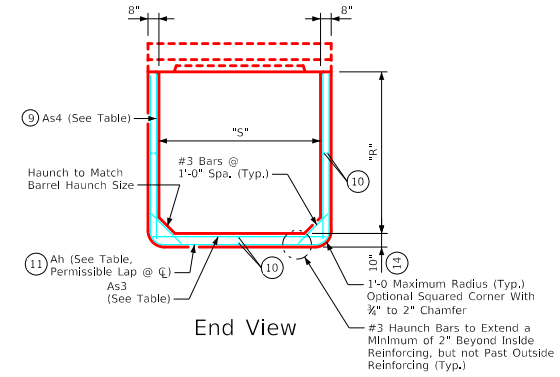


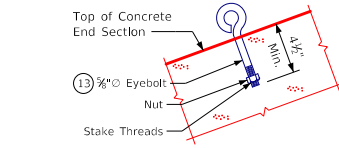
REVISED 10-2021: Updated curtain wall height & added lintel beam connection hole location in Plan View. Updated wall thickness & added note reference for floor thickness in End View. ENGLISHIGNEDPRECASTCULVERTS.DGN - PES 7-20-T3 S1 - THIS SHEET ISSUED 12-2020.



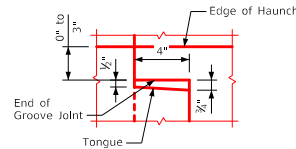
Plan View



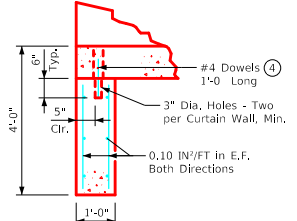
End View



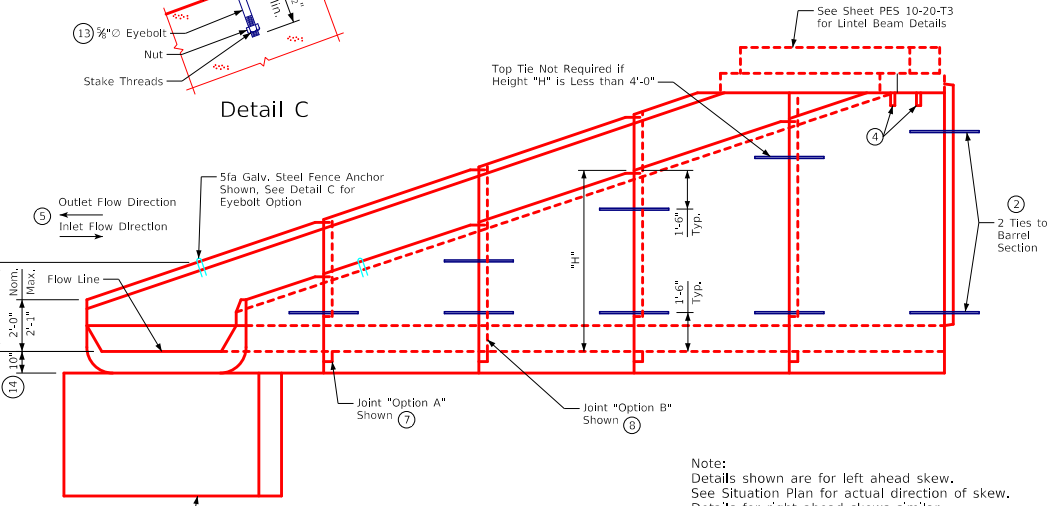
Detail C



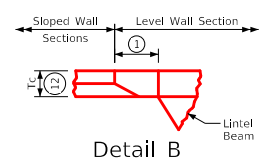
Detail A
(Detail Shown at Floor; Similar at Walls)



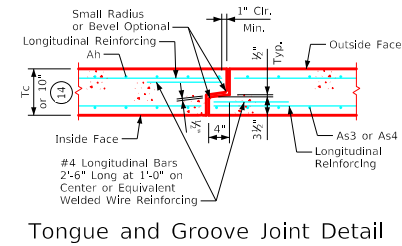
Section A-A



Elevation

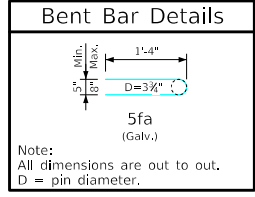


Detail B



Tongue and Groove Joint Detail

Note:
Details shown are for left ahead skew.
See Situation Plan for actual direction of skew.
Details for right ahead skews similar.
See sheet PES 8-20-T3 for additional information
and notes used in conjunction with this sheet.



Note:
All dimensions are out to out.
D = pin diameter.

LATEST REVISION DATE 10-2021 APPROVED BY BRIDGE ENGINEER		
	Standard Design Single Precast Reinforced Concrete Box Culverts December, 2020	
	Type 3 End Section Details	PES 7-20-T3 For Skews of 7.5° to 45°; 14'-16' Spans Sheet 1 of 2