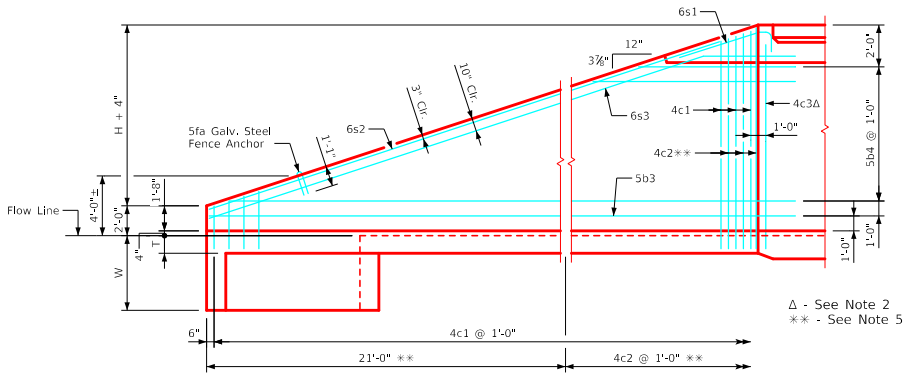
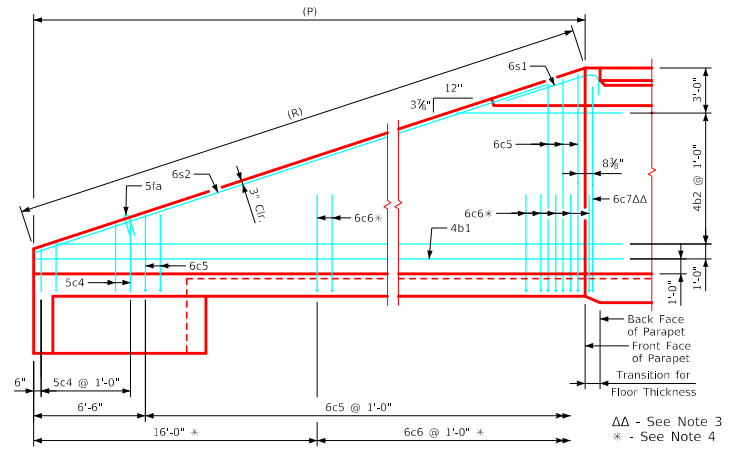


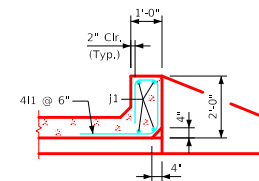
ENGLISHRFDISIGNEDSINGLECULVERTSFWH.DGN - FWH 0-4-21 - THIS SHEET ISSUED 02-2021.



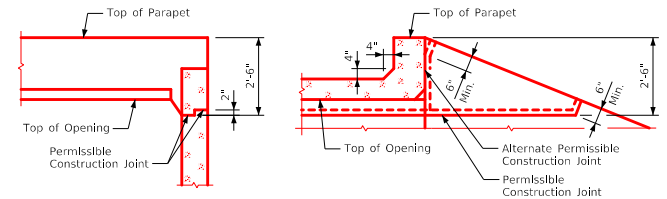
Typical View - Front Face Wingwall Reinforcing



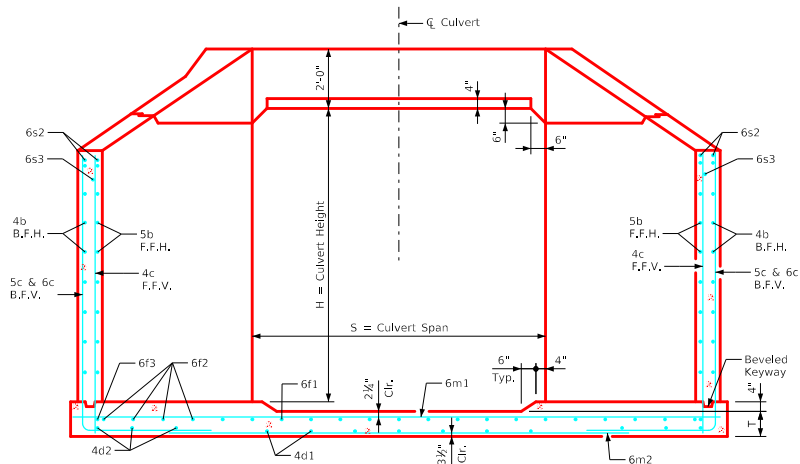
Typical View - Back Face Wingwall Reinforcing



Section thru Parapet



Top of Wingwall Details



Typical Section - Near Center of Apron

Notes:

1. Bar spacings and positions shown are similar for all sizes of headwalls in this standard.
2. Two 4c3 bars for 3' thru 5' & 11' thru 14' height headwalls. One 4c3 bar for 6' thru 10' height headwalls.
3. Two 6c7 bars for 3' thru 5' & 11' thru 14' headwalls. One 6c7 bar for 6' thru 10' height headwalls.
4. Not applicable for 3' thru 6' height headwalls.
5. Not applicable for 3' thru 8' height headwalls.
6. For dimension table, see sheet FWH 0-2-21.
7. Top of wall slope may be rounded in some instances.

LATEST REVISION DATE	APPROVED BY BRIDGE ENGINEER		
		Standard Design - Single Reinforced Concrete Box Culverts	
		Flared Wing Headwalls February, 2021	
		Wingwall & Parapet Details 0° Skew	FWH 0-4-21