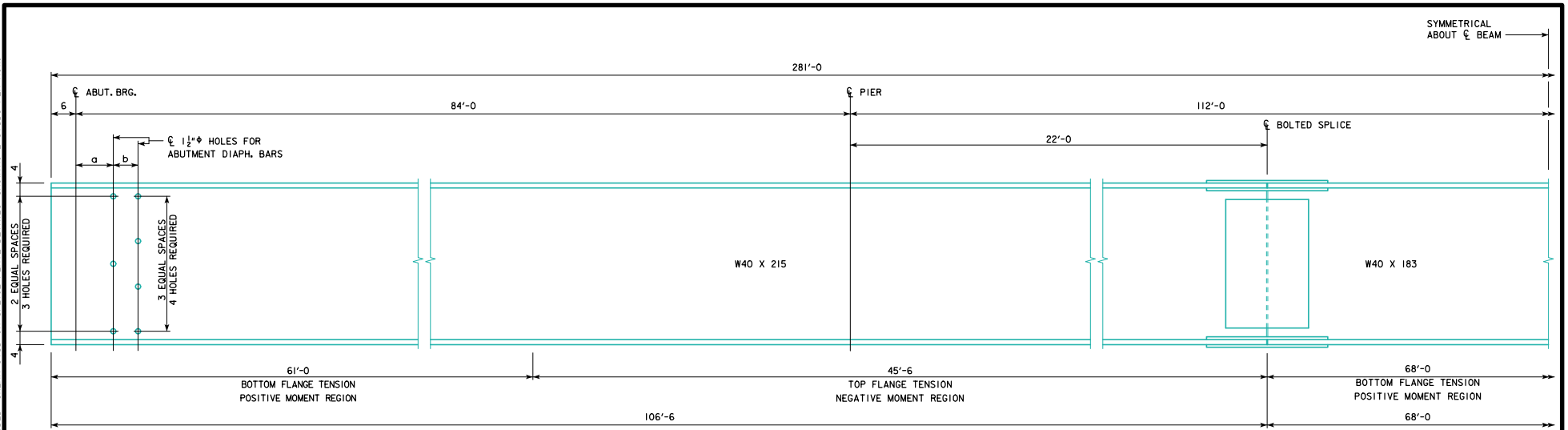
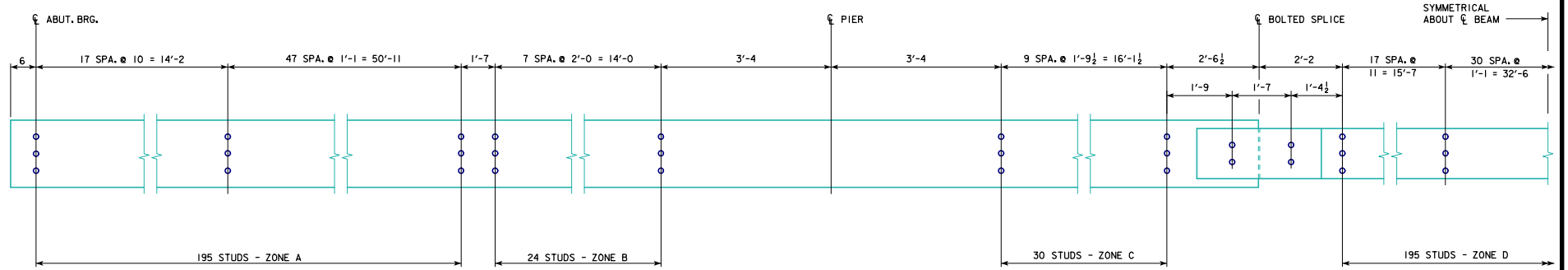


REVISED 02-14 - A STUD HEIGHT OF 4" WAS ADDED TO THE * NOTE.
REVISED 10-2016 - ADDED 4 SHEAR STUDS AT "CENTERLINE OF BOLTED SPLICE" LOCATION BETWEEN "ZONE C & D". ADDED "SHEAR STUD ON SPLICE PLATE DETAILS" SHOWING 2 STUDS PER ROW.

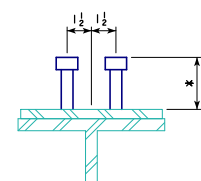


BEAM ELEVATION

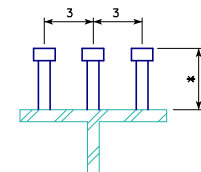


SHEAR STUD SPACING

* NOTE: STUD HEIGHTS (3 1/2", 4" OR 5") FOR THE LOCATIONS SHOWN SHALL BE DETERMINED BY THE DESIGNER. ON "MISCELLANEOUS DETAILS 280'-0" BRIDGE" SHEET, STUD HEIGHTS CAN BE IDENTIFIED BY THE DESIGNER IN A TABLE CORRESPONDING TO THE ZONES LISTED ON THIS SHEET.



**2 STUDS PER ROW
SHEAR STUD ON
SPLICE PLATE DETAILS**
NOTE: ALL STUDS TO BE 7/8" φ



**3 STUDS PER ROW
SHEAR STUD DETAILS**
NOTE: ALL STUDS TO BE 7/8" φ

SKIEW	a (IN)	b (IN)
0°	9	6
10°	9 1/8	6 1/8
20°	9 1/4	6 1/4
30°	10 1/4	6 1/4
45°	12 3/4	8 1/2

10-2016
LATEST REVISION DATE
Norman E. Mc Donald
APPROVED BY BRIDGE ENGINEER

IOWADOT Highway Division
STANDARD DESIGN - 40' ROADWAY, 3 SPAN BRIDGES
ROLLED STEEL BEAM BRIDGES
JUNE, 2010

**BEAM PLAN AND ELEVATION
280'-0" BRIDGE** **RS40-077-10**