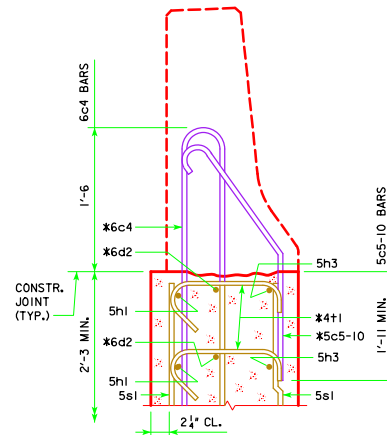


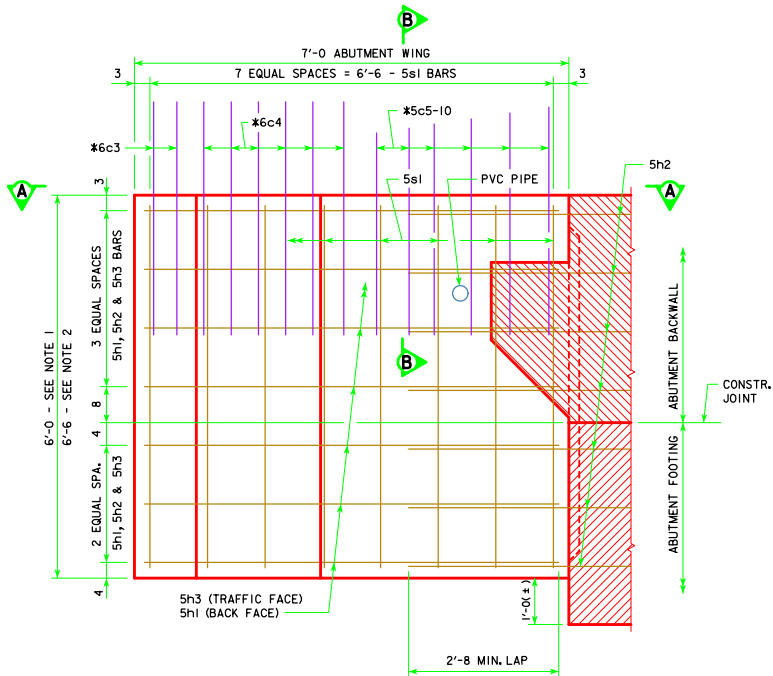
NOTE:
 PLUG 3" PVC PIPE WITH
 EXPANDING FOAM PRIOR
 TO BACKFILLING BEHIND
 ABUTMENTS.



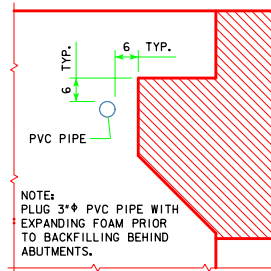
SECTION B-B

* BARRIER RAIL END SECTION
 BARS TO BE PLACED WITH
 ABUTMENT WING.

SEE END SECTION DETAILS ON
 SHEET RS40-089-14 FOR DETAILS
 OF BARRIER RAIL END SECTION.
 REINFORCING BARS 6c3, 6c4,
 5c5-10, 6d2 & 4t1 ARE
 INCLUDED IN THE BARRIER
 RAIL QUANTITIES.



ABUTMENT WING - ELEVATION VIEW



NOTE:
 PLUG 3" PVC PIPE WITH
 EXPANDING FOAM PRIOR
 TO BACKFILLING BEHIND
 ABUTMENTS.

PVC PIPE LOCATION

NOTE:

1. USE FOR BRIDGES 160'-0 THRU 200'-0.
2. USE FOR BRIDGES 220'-0 THRU 320'-0.
3. REINFORCING STEEL QUANTITY IS INCLUDED IN THE DECK AND ABUTMENT REINFORCEMENT QUANTITIES.
4. SEE CONCRETE PLACEMENT QUANTITIES TABLE FOR VALUES.

LATEST REVISION DATE

APPROVED BY BRIDGE ENGINEER
Norman E. Mc Donald

IOWADOT Highway Division

STANDARD DESIGN - 40' ROADWAY, 3 SPAN BRIDGES
ROLLED STEEL BEAM BRIDGES

OCTOBER, 2014

**ABUTMENT WING DETAILS
 BRIDGES 160'-0 - 320'-0**

RS40-029-14