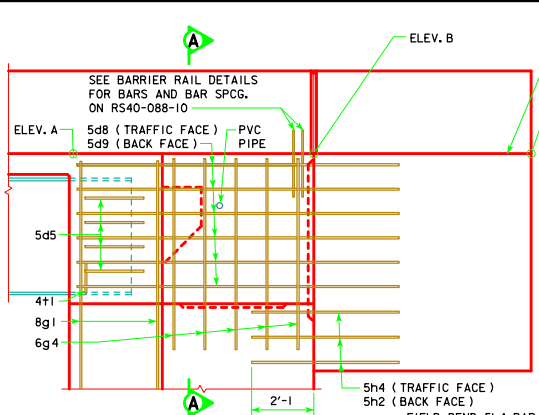


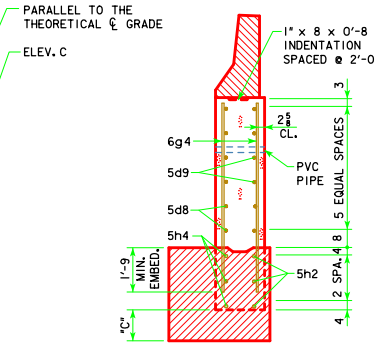
PART LONGITUDINAL SECTION NEAR GUTTER

NOTE:
 PLUG 3" PVC PIPE WITH
 EXPANDING FOAM PRIOR
 TO BACKFILLING BEHIND
 ABUTMENTS.



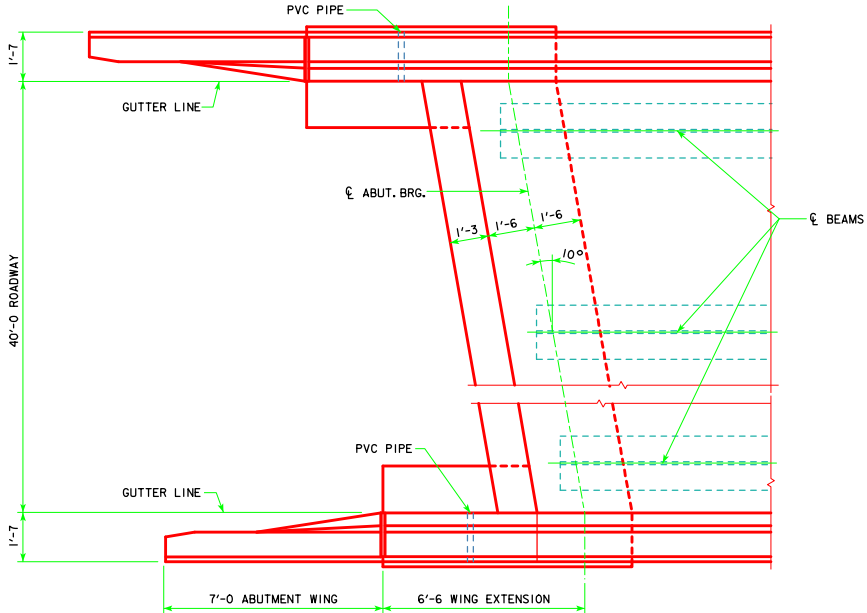
PART END VIEW AT ABUTMENT

NOTE:
 FOR ELEVATION A, ELEVATION B, ELEVATION C AND
 DIMENSION C SEE "MISCELLANEOUS DETAILS"
 FOR THE APPROPRIATE LENGTH BRIDGE.

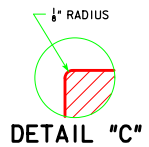


SECTION A-A

FIELD BEND 5h4 BAR
 AS NECESSARY TO
 AVOID PILE IN
 ABUTMENT WING.



PART PLAN
 (STEEL DIAPHRAGMS NOT SHOWN)



REVISED 01-12 - ADDED FIELD BEND 5h4 BAR TO AVOID PILE IN ABUTMENT WING NOTE.

LATEST REVISION DATE 01-12 APPROVED BY BRIDGE ENGINEER <i>Norman E. Mc Donald</i>	
	STANDARD DESIGN - 40' ROADWAY, 3 SPAN BRIDGES ROLLED STEEL BEAM BRIDGES JUNE, 2010
	LONGITUDINAL SECTION 10° SKEW
RS40-022-10	