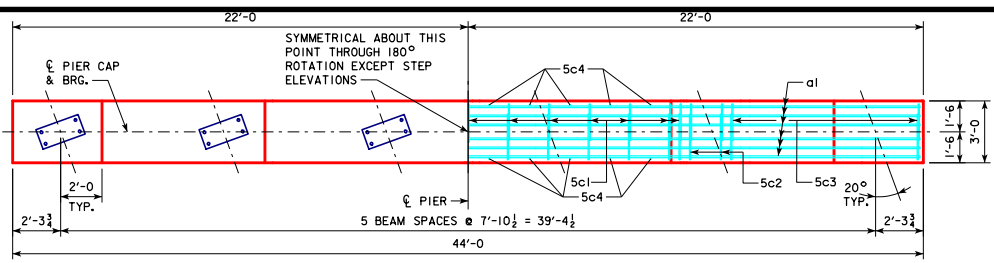


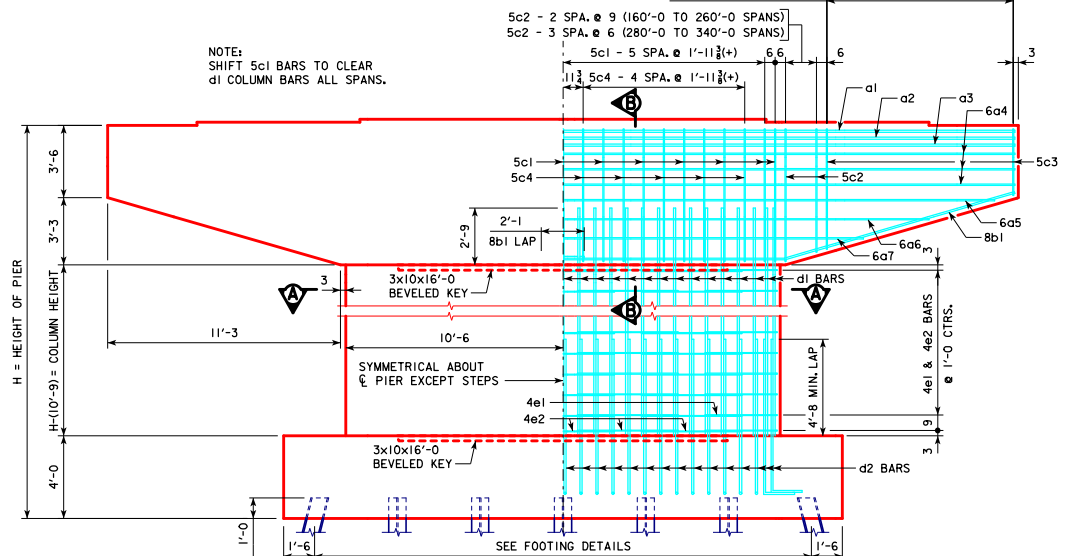
REVISED 02-2017 - CHANGED BEVELED KEYWAY ON PIER COLUMN CAP AND FOOTING TO 3"x10"x16"-0 (WAS 2"x8"x18"-0). KEYWAY LENGTH CHANGED TO BE 5'-0" LESS THAN WIDTH OF PIER COLUMN.



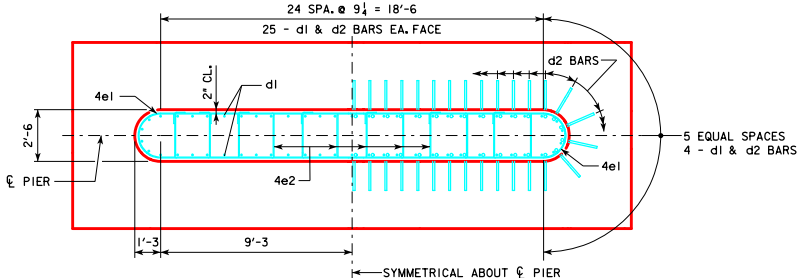
CAP PLAN

160'-0" TO 240'-0" SPANS 5c3 - 9 SPA. @ 1'-0" = 9'-0"
 260'-0" TO 280'-0" SPANS 5c3 - 12 SPA. @ 9" = 9'-0"
 300'-0" TO 340'-0" SPANS 5c3 - 15 SPA. @ 7 1/4"(-) = 9'-0"

NOTE:
 SHIFT 5c1 BARS TO CLEAR
 d1 COLUMN BARS ALL SPANS.

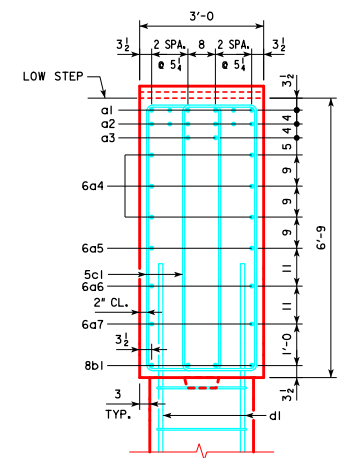


FRONT ELEVATION

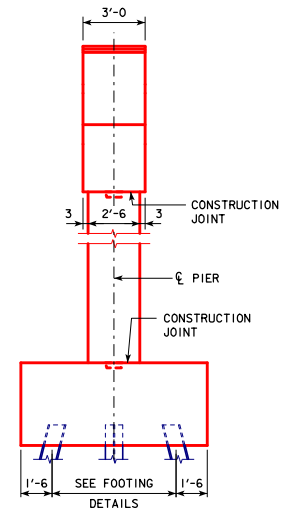


SECTION A-A

NOTE:
 ANCHOR BOLTS REQUIRED FOR FIXED
 PIER BEARINGS ONLY. FOR BOLT AND
 BEARING SIZES, SEE RS40-093-14,
 RS40-094-14 OR RS40-095-14.



SECTION B-B



END ELEVATION

02-2017 LATEST REVISION DATE Approved by [Signature] APPROVED BY BRIDGE ENGINEER	
	STANDARD DESIGN - 40' ROADWAY, 3 SPAN BRIDGES ROLLED STEEL BEAM BRIDGES OCTOBER, 2014
	TEE PIER CAP & COLUMN DETAILS 20° SKEW
RS40-136-14	