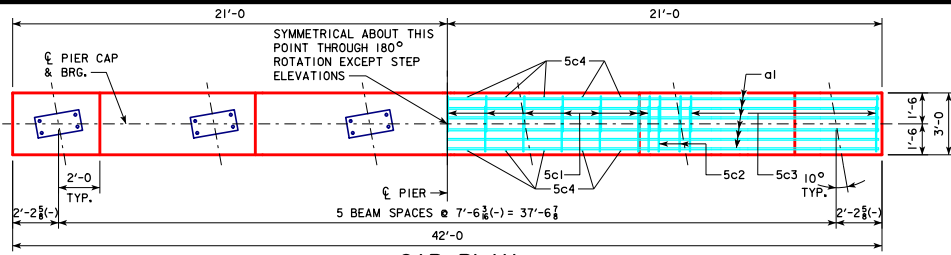
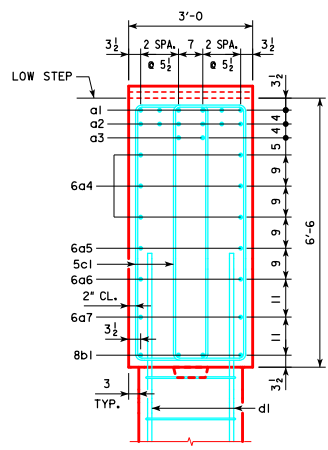


REVISED 02-2017 - CHANGED BEVELED KEYWAY ON PIER COLUMN CAP AND FOOTING TO 3"x10"x15"-0 (WAS 2"x8"x17"-0). KEYWAY LENGTH CHANGED TO BE 5'-0" LESS THAN WIDTH OF PIER COLUMN.

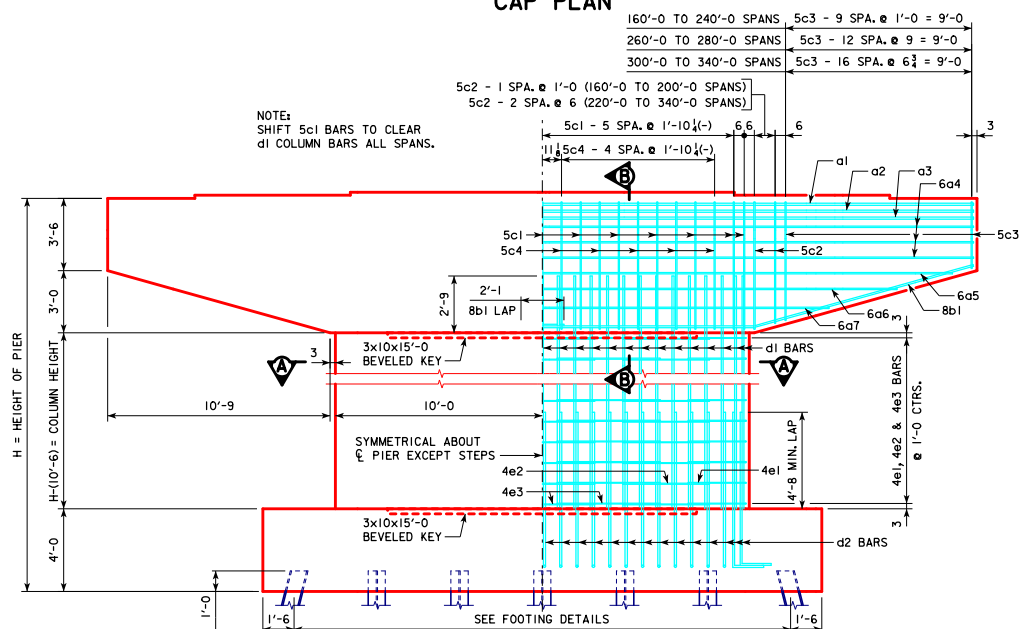


CAP PLAN

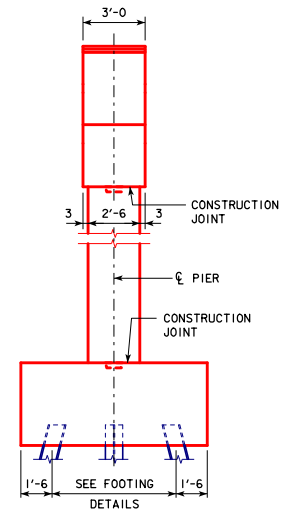
NOTE:
ANCHOR BOLTS REQUIRED FOR FIXED
PIER BEARINGS ONLY. FOR BOLT AND
BEARING SIZES, SEE RS40-093-14,
RS40-094-14 OR RS40-095-14.



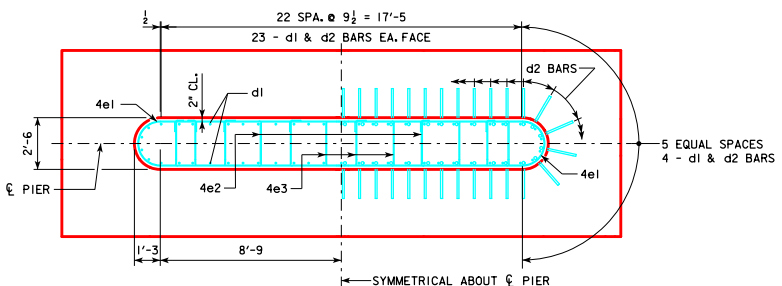
SECTION B-B



FRONT ELEVATION



END ELEVATION



SECTION A-A

02-2017 LATEST REVISION DATE <i>Thomas E. McQuinn</i> APPROVED BY BRIDGE ENGINEER	
	STANDARD DESIGN - 40' ROADWAY, 3 SPAN BRIDGES ROLLED STEEL BEAM BRIDGES OCTOBER, 2014
	TEE PIER CAP & COLUMN DETAILS 10° SKEW

RS40-126-14