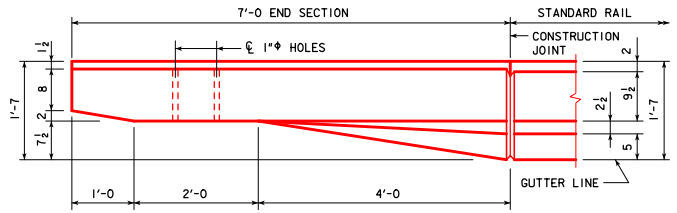
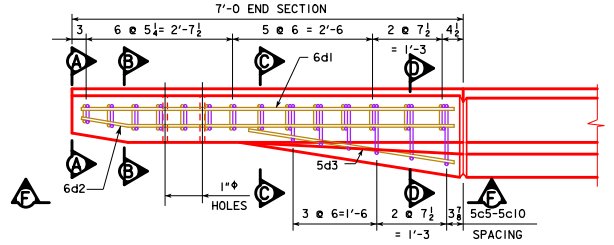


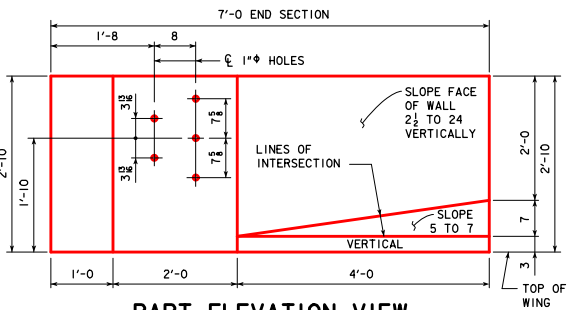
REVISED 03-2016: REFERENCE TO "1" PVC PIPE" WAS CHANGED FROM "1" PVC PIPE" TO "1" PVC PIPE".
 REVISED 09-2016: REMOVED "NOTE: REINFORCING STEEL QUANTITIES ARE INCLUDED ON THE SUMMARY QUANTITIES SHEET."
 REVISED 08-2020: UPDATED BRIDGE ENGINEER SIGNATURE. CHANGED SECTION A-A (WAS VIEW A-A).



PART PLAN VIEW

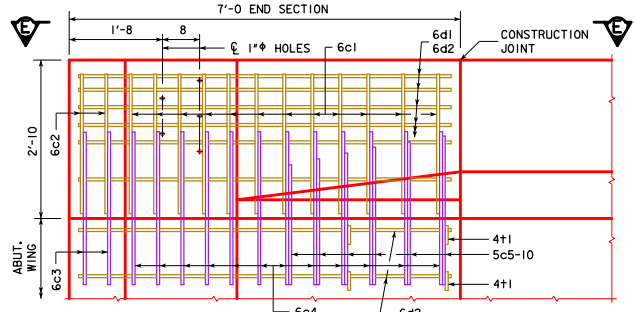


PART VIEW E-E

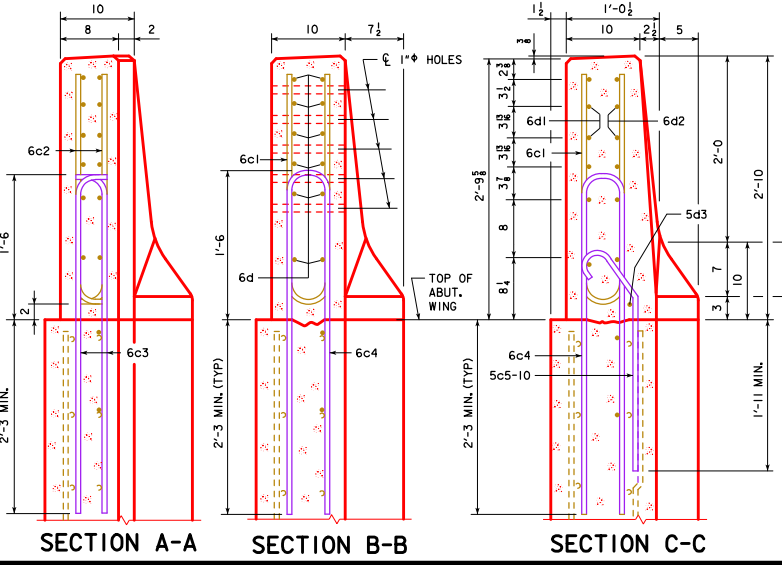


PART ELEVATION VIEW

PROVIDE 5 HOLES FORMED WITH 1" PVC PIPE. COST TO BE INCLUDED IN PRICE BID FOR CONCRETE BARRIER RAILING.



PART VIEW F-F

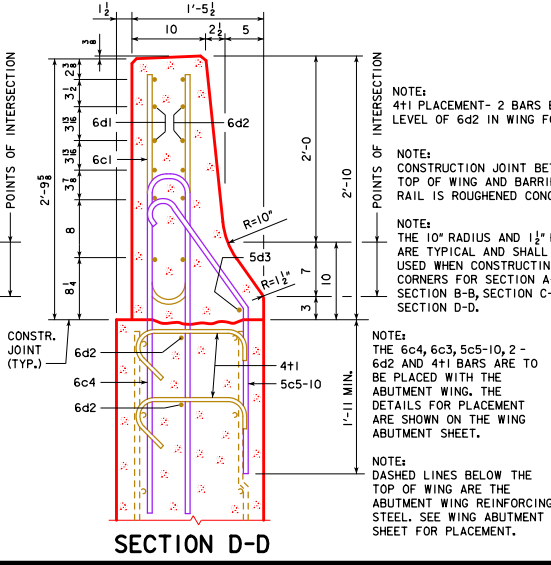


SECTION A-A

SECTION B-B

SECTION C-C

SECTION D-D



NOTE: 4+1 PLACEMENT - 2 BARS EACH LEVEL OF 6d2 IN WING FOOTING.

NOTE: CONSTRUCTION JOINT BETWEEN TOP OF WING AND BARRIER RAIL IS ROUGHENED CONCRETE.

NOTE: THE 10" RADIUS AND 1/2" RADIUS ARE TYPICAL AND SHALL BE USED WHEN CONSTRUCTING THE CORNERS FOR SECTION A-A, SECTION B-B, SECTION C-C AND SECTION D-D.

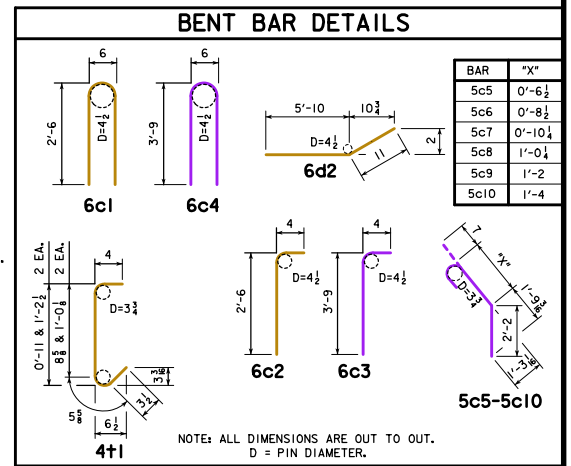
NOTE: THE 6c4, 6c3, 5c5-10, 2-6d2 AND 4+1 BARS ARE TO BE PLACED WITH THE ABUTMENT WING. THE DETAILS FOR PLACEMENT ARE SHOWN ON THE WING ABUTMENT SHEET.

NOTE: DASHED LINES BELOW THE TOP OF WING ARE THE ABUTMENT WING REINFORCING STEEL. SEE WING ABUTMENT SHEET FOR PLACEMENT.

EPOXY COATED REINF. STEEL - ONE END SECT.					
BAR	LOCATION	SHAPE	NO.	LENGTH	WEIGHT
6c1	RAIL, VERTICAL	□	12	5'-6"	99
6c2	RAIL, VERTICAL	┘	4	2'-10"	17
6d1	RAIL, HORIZONTAL	—	6	6'-8"	60
6d2	RAIL, HORIZONTAL	—	8	6'-9"	81
5d3	RAIL, HORIZONTAL	—	1	3'-9"	4
4+1	RAIL, ABUTMENT WING TIE BARS	┘	4	VARIES	5
EPOXY REINF. TOTAL WEIGHT (LBS.)					266

STAINLESS STEEL REINF. STEEL - ONE END SECT.					
BAR	LOCATION	SHAPE	NO.	LENGTH	WEIGHT
6c3	RAIL, VERTICAL	┘	4	4'-1"	25
6c4	RAIL, VERTICAL	┘	12	8'-0"	144
5c5-10	RAIL, VERTICAL	┘	6	VARIES	23
STAINLESS STEEL TOTAL WEIGHT (LBS.)					192

CONCRETE PLACEMENT SUMMARY		
SECTION		TOTAL
BARRIER RAIL ONE END SECTION		0.65 CU. YD.



IOWADOT Highway Division

STANDARD DESIGN - 44' ROADWAY, 3 SPAN BRIDGES

CONTINUOUS CONCRETE SLAB BRIDGES

JULY, 2014

BARRIER RAIL END SECTION	J44-47-14
---------------------------------	------------------