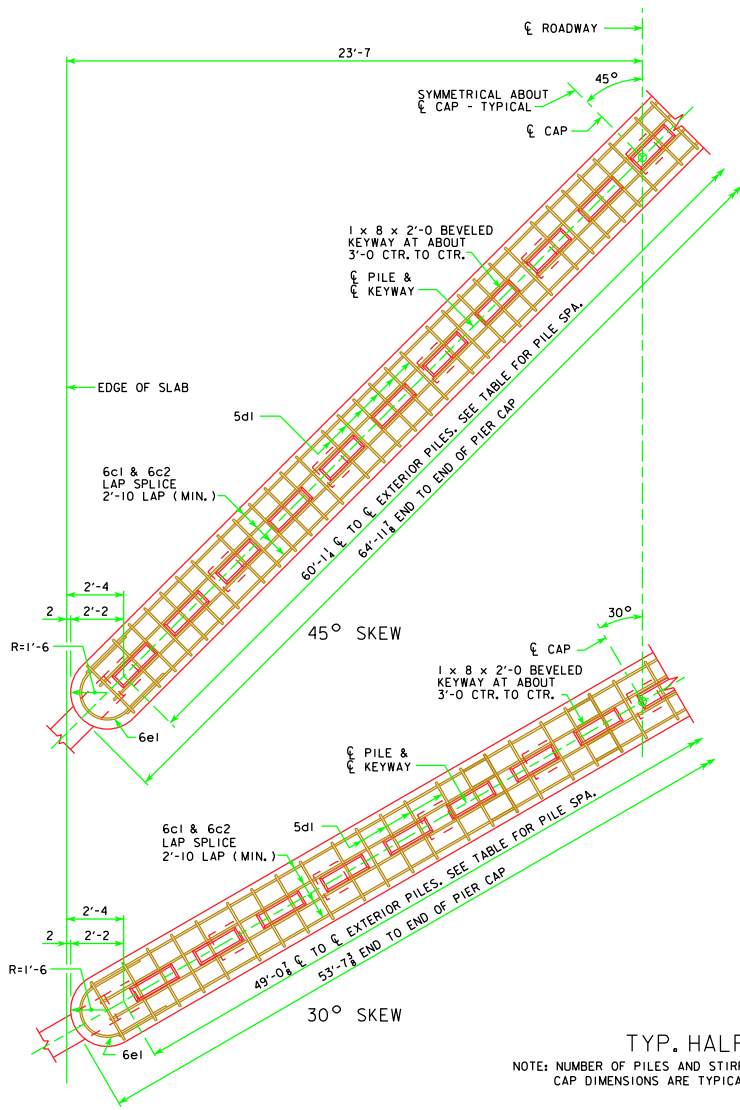
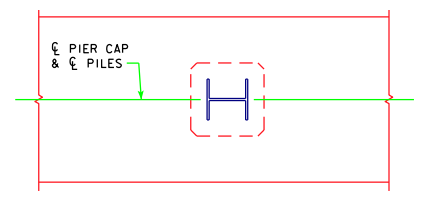
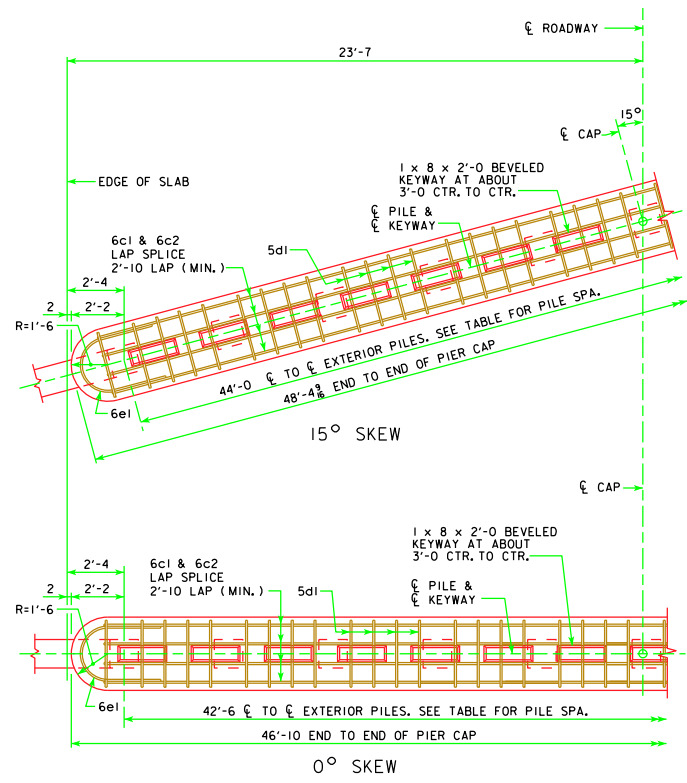


REVISED 11-08 - ADD TYPE 3 PILE ORIENTATION DETAIL. ADDED EXTRA 5d1 TO END OF CAP.



TYP. HALF PLAN VIEW

NOTE: NUMBER OF PILES AND STIRRUPS SHOWN ARE FOR A 90'-0" BRIDGE. CAP DIMENSIONS ARE TYPICAL FOR ALL BRIDGES.



PILE ORIENTATION DETAIL FOR TYPE 3 TRESTLE BENT PILES

11-08 LATEST REVISION DATE  <i>Thomas E. McQuinn</i> APPROVED BY BRIDGE ENGINEER		
	STANDARD DESIGN - 44' ROADWAY, 3 SPAN BRIDGES <b>CONTINUOUS CONCRETE          SLAB BRIDGES</b> NOVEMBER, 2006	
	NON-MONOLITHIC PIER CAP DETAILS ALL BRIDGES	J44-28-06