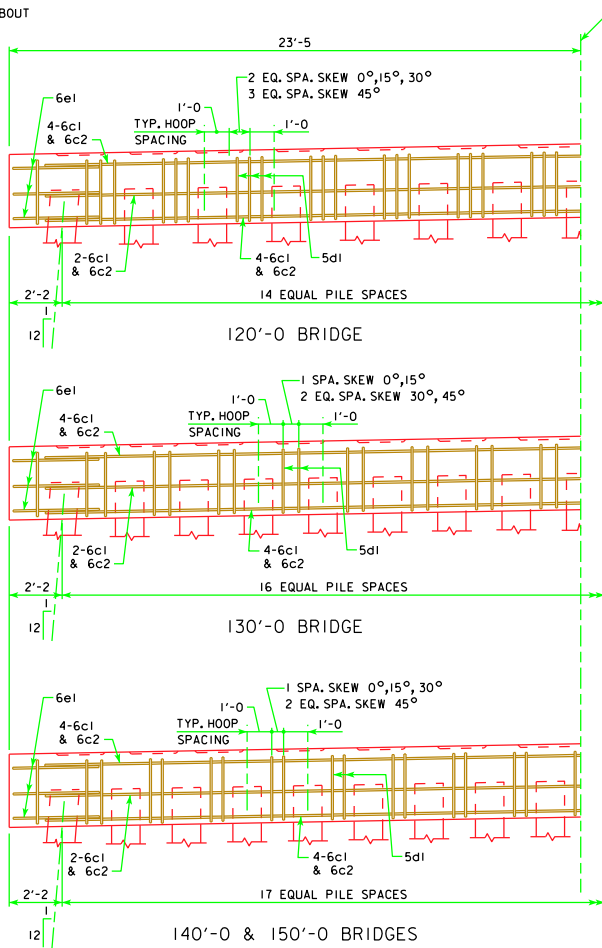
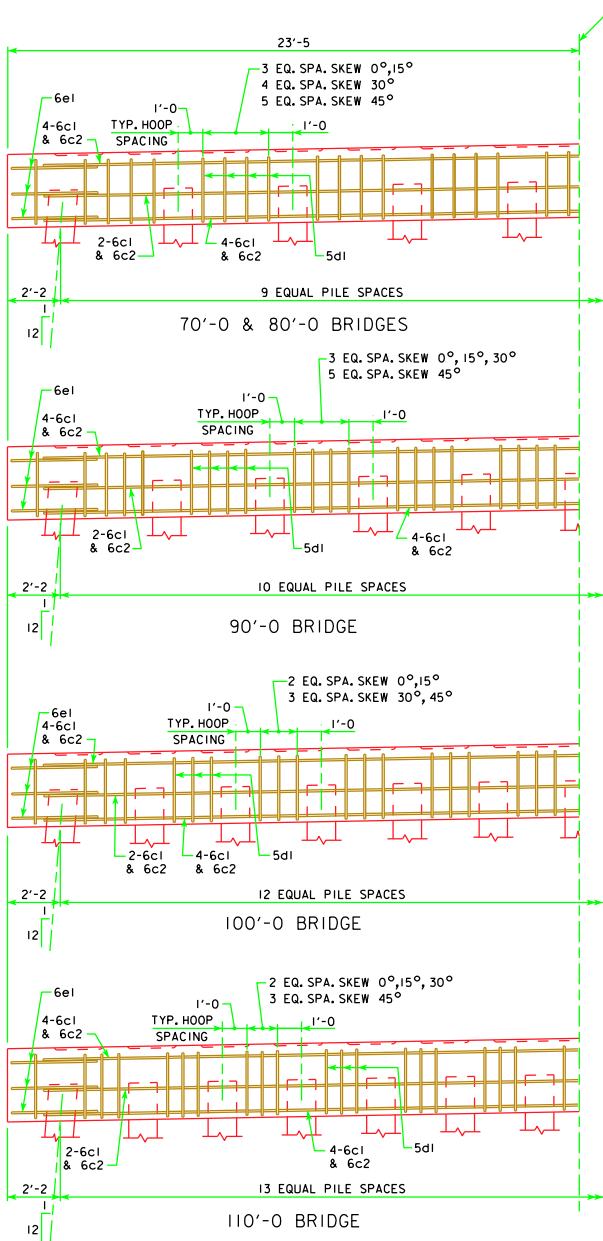
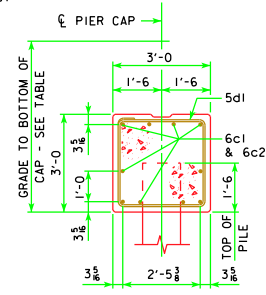


REVISED 11-08 - REVISED PILES REQUIRED FOR 130'-0 AND 140'-0 BRIDGES. ADDED EXTRA 5d1 TO END OF CAP.

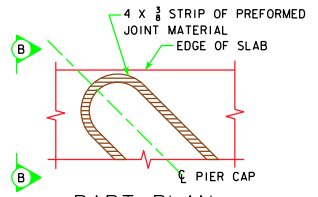


TYP. HALF ELEVATION PIER CAP  
(LOOKING PARALLEL TO  $\xi$  ROADWAY)



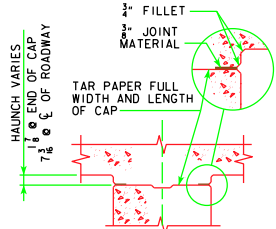
GRADE TO BOTTOM OF CAP DIMENSION	
70'-0 BRIDGE	4'-9 $\frac{1}{8}$
80'-0 BRIDGE	4'-10 $\frac{1}{8}$
90'-0 BRIDGE	4'-11 $\frac{7}{8}$
100'-0 BRIDGE	5'-0 $\frac{1}{8}$
110'-0 BRIDGE	5'-1 $\frac{1}{8}$
120'-0 BRIDGE	5'-3 $\frac{3}{8}$
130'-0 BRIDGE	5'-4 $\frac{1}{8}$
140'-0 BRIDGE	5'-5 $\frac{1}{8}$
150'-0 BRIDGE	5'-7 $\frac{3}{8}$

TYP. SECTION

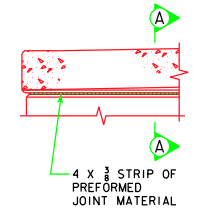


PART PLAN

SHOWING TREATMENT OF 4 X  $\frac{3}{8}$  STRIP OF PREFORMED JOINT MATERIAL AT ENDS OF PIER CAP. NOTE THAT JOINT MATERIAL IS TO GO ALL THE WAY AROUND PIER CAP FOR SQUARE AND SKEWED BRIDGES.



PART SECT A-A



PART SECT B-B

11-08 LATEST REVISION DATE <i>Thomas E. McQuinn</i> APPROVED BY BRIDGE ENGINEER	
	Iowa Department of Transportation Highway Division STANDARD DESIGN - 44' ROADWAY, 3 SPAN BRIDGES <b>CONTINUOUS CONCRETE          SLAB BRIDGES</b> NOVEMBER, 2006
NON-MONOLITHIC PIER CAP DETAILS ALL BRIDGES	J44-27-06