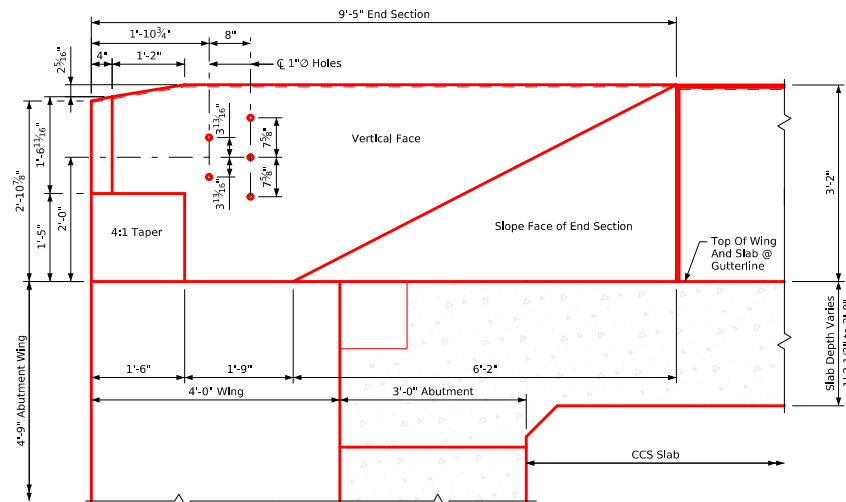


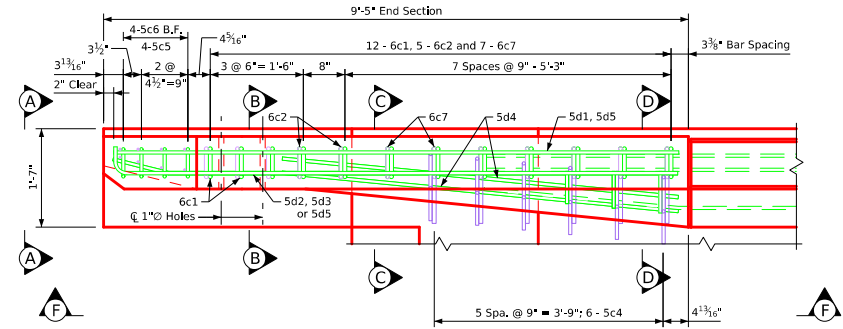
Part Plan View

Provide five holes formed with 1" diameter plastic conduit.
Cost to be included in price of Bid for **Concrete Barrier Rail**.

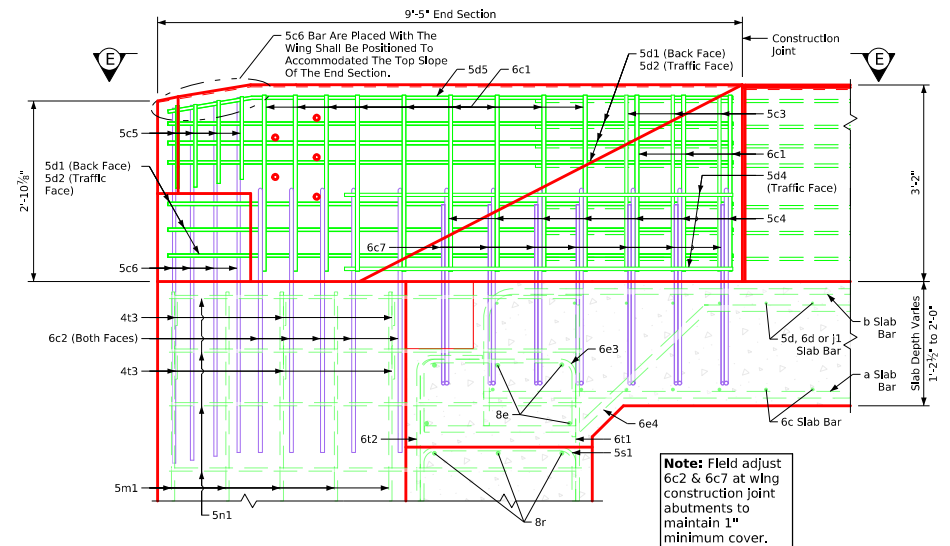


Part Elevation View

Note: 4t3 placement: Six bars each at the top two rows of the 5n1 bars in the abutment wing to provide construction tie locations for vertical barrier bars.
Construction joint between the top of the abutment wing and the single-slope barrier rail is roughened concrete.
6c2, 5c4, 5c6, 6c7, 5d4 and 4t3 bars are to be placed with the abutment wing.
Dashed lines below the top of the wing indicate abutment wing and slab reinforcing steel. For additional details, see Sheet **J40-20-25**.



Part View E-E



Part View F-F

Note:
For section details, see Sheet **J40-50-25**

Latest Revision Date

Approved by Bridge Engineer

IOWA | DOT

Standard Design-40'-0" Roadway, 3 Span Bridge

Continuous Concrete Slab Bridge

July, 2025

Rail Single-Slope
Barrier - End Section
Details (1 of 2)

J40-49-25