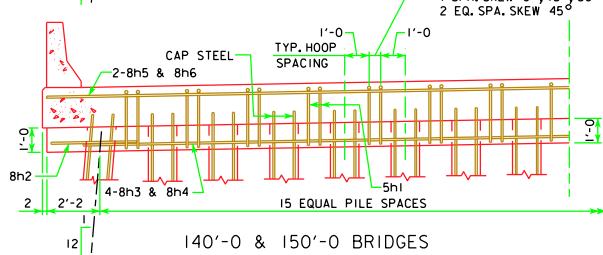
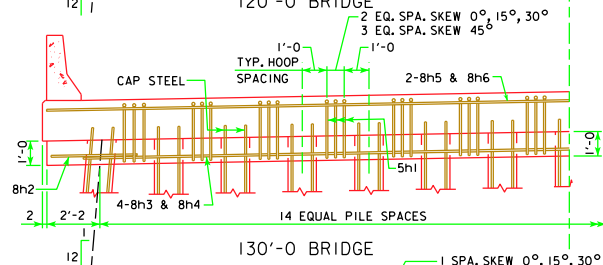
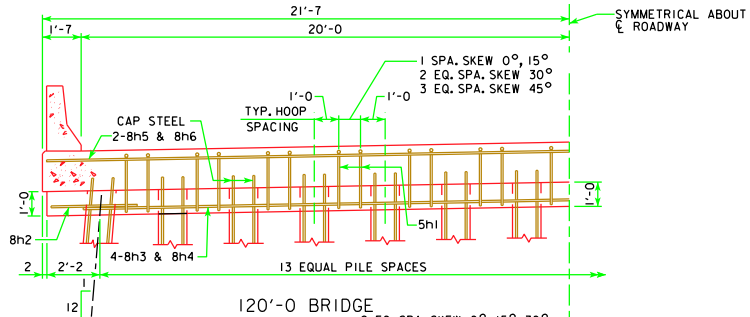
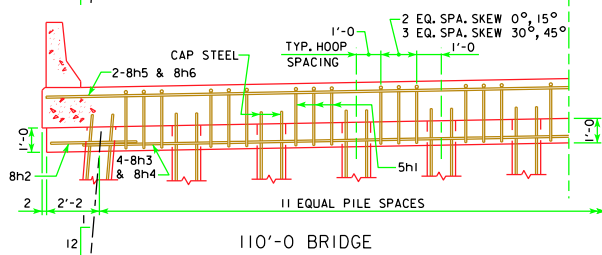
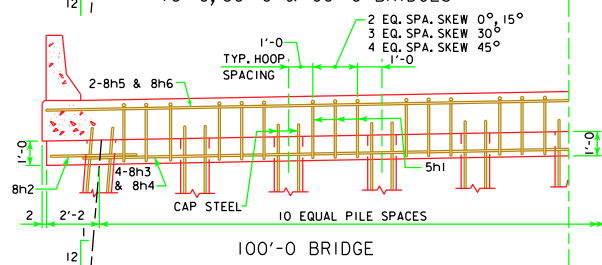
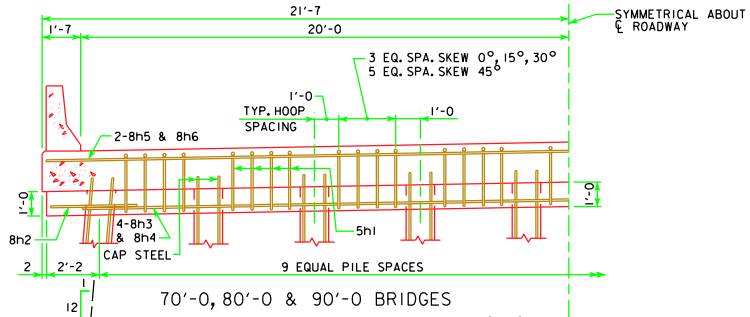
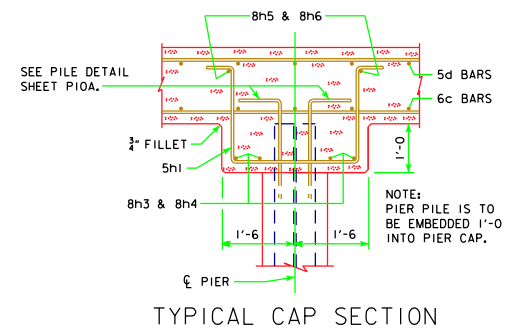


REVISED 11-08 - REVISED PILES REQUIRED FOR 120'-0 AND 130'-0 BRIDGES.



HALF SECTION NEAR PIER
 SHOWING STIRRUP SPACING AND NUMBER OF PILING
 NOTE: BOTTOM OF CAP ELEVATIONS WILL BE REQUIRED AT THE
 CENTER OF ROADWAY AND AT EACH EXTERIOR PILE.



11-08 LATEST REVISION DATE <i>Thomas E. McQuinn</i> APPROVED BY BRIDGE ENGINEER	 Iowa Department of Transportation Highway Division STANDARD DESIGN - 40' ROADWAY, 3 SPAN BRIDGES CONTINUOUS CONCRETE SLAB BRIDGES NOVEMBER, 2006
	MONOLITHIC PIER CAP DETAILS ALL BRIDGES
J40-26-06	