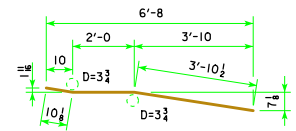


REINFORCING BAR LIST - ONE ABUT. WING

BAR	LOCATION	SHAPE	NO.	LENGTH	WEIGHT
5h1	HORIZONTAL BACK FACE	—	9	6'-8	63
5h3	HORIZONTAL TRAFFIC FACE	—	9	6'-9	63
5s1	VERTICAL BOTH FACES	—	16	7'-8	128
TOTAL (LBS.)					254



5h3
NOTE: ALL DIMENSIONS ARE OUT TO OUT. D = PIN DIAMETER.
BENT BAR DETAILS

CONCRETE PLACEMENT SUMMARY

CONCRETE	TOTAL
ONE ABUTMENT WING	2.3
TOTAL (CU. YDS.)	2.3

NOTE:
REINFORCING STEEL QUANTITY AND CONCRETE QUANTITY ARE TO BE ADDED TO THE SUPERSTRUCTURE QUANTITIES SHOWN ELSEWHERE IN THESE PLANS.

LATEST REVISION DATE

APPROVED BY BRIDGE ENGINEER

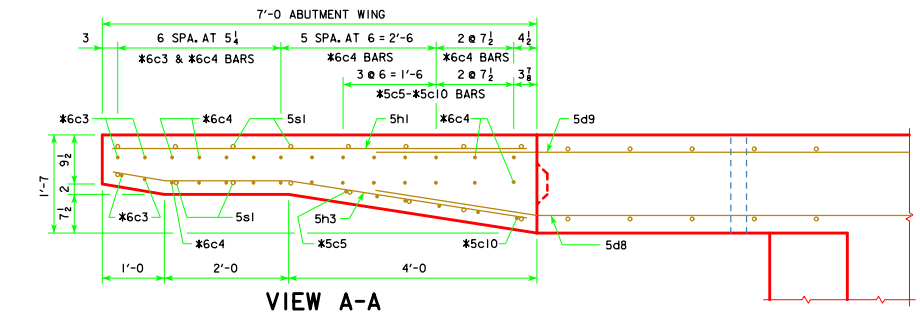
STANDARD DESIGN - 30' ROADWAY, SINGLE SPAN BRIDGE

PRETENSIONED PRESTRESSED CONCRETE BEAM BRIDGES

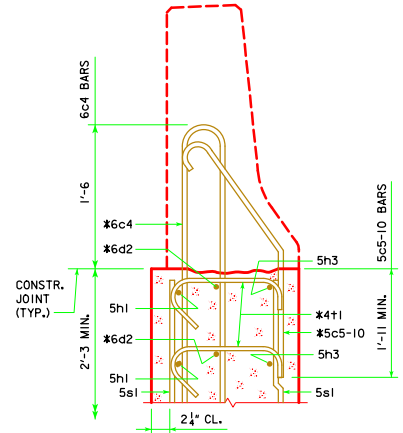
APRIL, 2012

WING DETAILS

H30S1-39-12

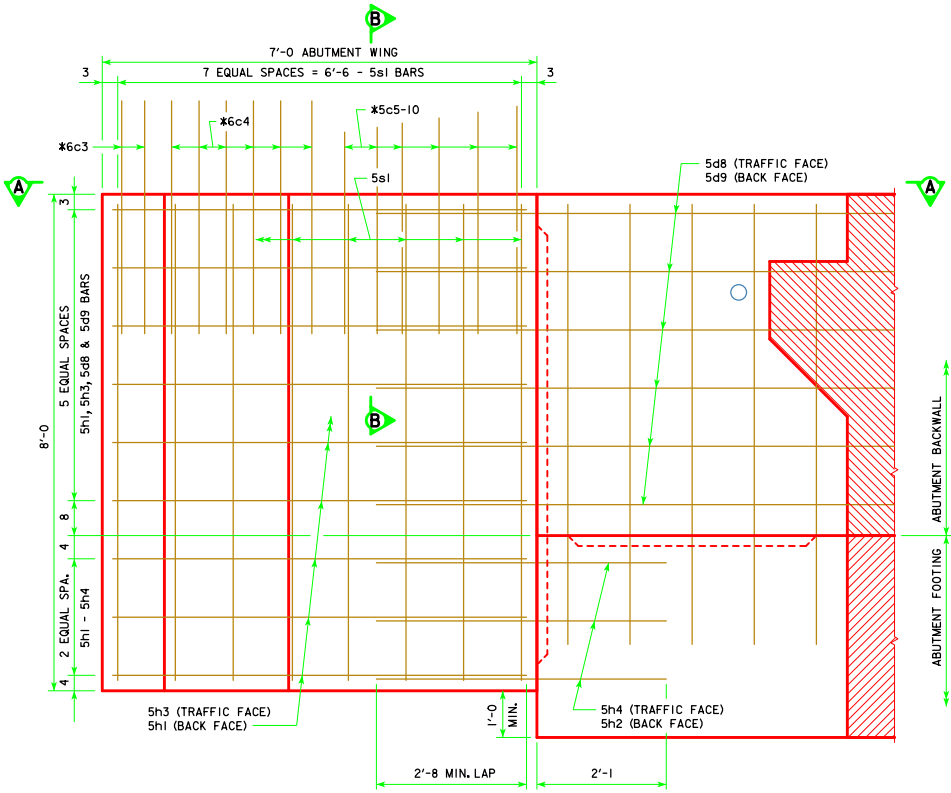


VIEW A-A



SECTION B-B

* BARRIER RAIL END SECTION BARS TO BE PLACED WITH ABUTMENT WING.
SEE END SECTION DETAILS IN THESE PLANS FOR DETAILS OF BARRIER RAIL END SECTION. REINFORCING BARS 6c3, 6c4, 5c5-10, 6d2 & 4t1 ARE INCLUDED IN THE SUPERSTRUCTURE QUANTITIES.



ABUTMENT WING - ELEVATION VIEW

'D' BEAM INTEGRAL ABUTMENT WING DETAILS