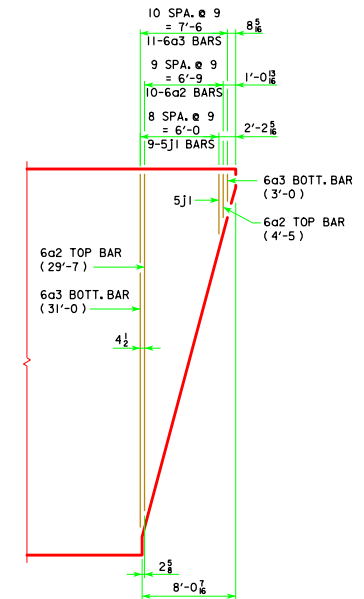


SLAB LAYOUT
(LEFT AHEAD SKEW SHOWN, RIGHT AHEAD SKEW SIMILAR)



END OF SLAB REINFORCING
(TYPICAL EACH END OF DECK)

GENERAL DATA

SPAN LENGTH (℄ - ℄ ABUTMENT BRGS.)		46'-8	55'-0	67'-6	80'-0	90'-0	100'-0	110'-0
LOCATION OF EXTREME 6a1 TOP BAR FROM END OF SLAB	"C"	2 7/8	3 3/8	6 3/8	4 1/2	6 3/8	3 3/8	4 7/8
NO. OF SPACES FOR 6a1 TOP BARS	"Z"	55	66	82	99	112	126	139
OUT TO OUT OF SLAB	"S"	49'-9 1/4	58'-1 1/4	70'-7 1/4	83'-1 1/4	93'-1 1/4	103'-1 1/4	113'-1 1/4
VERTICAL CURVE TOP OF SLAB TO ABUTMENT TOP AT ℄ ABUTMENT BEARING	"U"	3'-8 3/8	3'-8 1/2	4'-3 3/8	4'-9 7/16	5'-6 3/16	5'-6 11/16	5'-7 5/16
STRAIGHT GRADE TOP OF SLAB TO ABUTMENT TOP AT ℄ ABUTMENT BEARING	"U"	3'-8 3/8	3'-8 1/2	4'-4 3/8	4'-9 5/16	5'-6 15/16	5'-7 7/16	5'-8 1/4
SERVICE D.L. ABUTMENT REACTION (D.L. + F.W.S.) SERVICE LOADS	KIPS	301.8	328.9	392.9	506.9	579.8	620.9	662.0
SERVICE L.L. ABUTMENT REACTION (HL-93) NO IMPACT SERVICE LOADS	KIPS	152.8	162.4	175.0	186.0	194.4	202.2	209.8

05-13 LATEST REVISION DATE <i>Norman E. McQuill</i> APPROVED BY BRIDGE ENGINEER	
	STANDARD DESIGN - 30' ROADWAY, SINGLE SPAN BRIDGE PRETENSIONED PRESTRESSED CONCRETE BEAM BRIDGES APRIL, 2012
	SUPERSTRUCTURE 15° SKEW H30SI-13-12

REVISED 05-13 -- REVISION FOR LRFD PILE DESIGN.