

EPOXY COATED REINFORCING STEEL-TWO OPEN RAILS

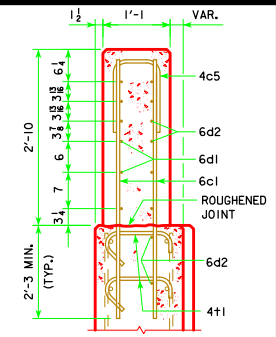
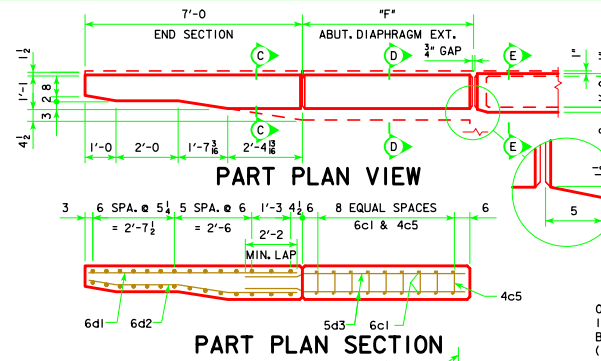
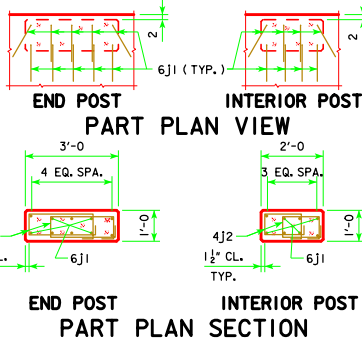
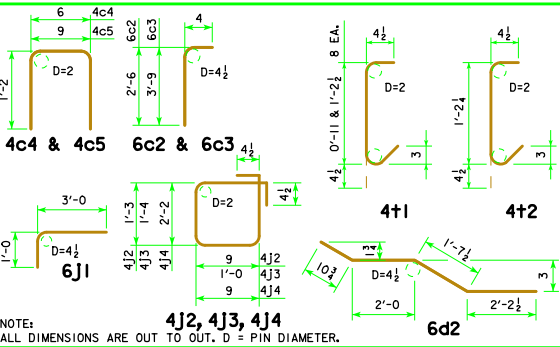
(NOTE: THESE REINFORCING BARS TO BE USED ON ALL SKEWS)

BRIDGE LENGTH		138'-10			151'-4			163'-10			176'-4			188'-10			201'-4			213'-10			226'-4			243'-0		
BAR	LOCATION	SHAPE	NO.	LENGTH	WEIGHT	NO.	LENGTH	WEIGHT	NO.	LENGTH	WEIGHT	NO.	LENGTH	WEIGHT	NO.	LENGTH	WEIGHT	NO.	LENGTH	WEIGHT	NO.	LENGTH	WEIGHT	NO.	LENGTH	WEIGHT		
6c1	VERTICAL, END SECTION & ABUT. DIAPH. EXT.		96	4'-11	709	96	4'-11	709	96	4'-11	709	96	4'-11	709	96	4'-11	709	168	4'-11	1,241	168	4'-11	1,241	168	4'-11	1,241		
6c2	VERTICAL, END SECTION		16	2'-10	68	16	2'-10	68	16	2'-10	68	16	2'-10	68	16	2'-10	68	16	2'-10	68	16	2'-10	68	16	2'-10	68		
6c3	VERTICAL, END SECTION		16	4'-1	98	16	4'-1	98	16	4'-1	98	16	4'-1	98	16	4'-1	98	16	4'-1	98	16	4'-1	98	16	4'-1	98		
4c4	VERTICAL HOOPS, END SECTION		20	2'-10	38	20	2'-10	38	20	2'-10	38	20	2'-10	38	20	2'-10	38	20	2'-10	38	20	2'-10	38	20	2'-10	38		
4c5	VERT. HOOPS, END SEC. & ABUT. DIAPH. EXT.		16	3'-1	33	16	3'-1	33	16	3'-1	33	16	3'-1	33	16	3'-1	33	52	3'-1	107	52	3'-1	107	52	3'-1	107		
6d1	HORIZONTAL, END SECTION-BACK FACE		24	6'-8	240	24	6'-8	240	24	6'-8	240	24	6'-8	240	24	6'-8	240	24	6'-8	240	24	6'-8	240	24	6'-8	240		
6d2	HORIZONTAL, END SECTION-TRAFFIC FACE		32	6'-9	324	32	6'-9	324	32	6'-9	324	32	6'-9	324	32	6'-9	324	32	6'-9	324	32	6'-9	324	32	6'-9	324		
5d3 *	HORIZONTAL, ABUT. DIAPH. EXT.-BOTH FACES																	48	7'-2	359	48	7'-2	359	48	7'-2	359		
6h1	LONGITUDINAL, OPEN RAIL		24	40'-0	1,442	36	40'-0	2,163	36	40'-0	2,163	36	40'-0	2,163	48	40'-0	2,884	48	40'-0	2,884	48	40'-0	2,884	60	40'-0	3,605		
6h2	LONGITUDINAL, OPEN RAIL, ENDS		24	36'-8	1,322	24	24'-8	889	24	30'-11	1,114	24	37'-2	1,340	24	25'-2	907	24	31'-5	1,133	24	37'-8	1,358	24	25'-8	925		
6j1	VERTICAL DOWELS, OPEN RAIL		312	4'-0	1,875	328	4'-0	1,971	360	4'-0	2,163	392	4'-0	2,355	408	4'-0	2,451	440	4'-0	2,644	456	4'-0	2,740	488	4'-0	2,932		
4j2	HOOP, INTERIOR POST		272	4'-9	863	288	4'-9	914	320	4'-9	1,015	352	4'-9	1,117	368	4'-9	1,168	400	4'-9	1,269	416	4'-9	1,320	448	4'-9	1,422		
4j3	HOOP, OPEN RAIL		472	5'-5	1,708	498	5'-5	1,802	550	5'-5	1,990	602	5'-5	2,178	628	5'-5	2,272	680	5'-5	2,460	706	5'-5	2,555	758	5'-5	2,743		
4j4	HOOP, END POST		32	6'-7	141	32	6'-7	141	32	6'-7	141	32	6'-7	141	32	6'-7	141	32	6'-7	141	32	6'-7	141	32	6'-7	141		
4t1	WING FOOTING TIE BARS		16	VARIES	19	16	VARIES	19	16	VARIES	19	16	VARIES	19	16	VARIES	19	16	VARIES	19	16	VARIES	19	16	VARIES	19		
4t2	WING FOOTING TIE BARS																	40	1'-11	51	40	1'-11	51	40	1'-11	51		
TOTAL LBS. (INCLUDE WITH SUPERSTRUCTURE REINFORCING)					8,880			9,409			10,115			10,823			11,352			13,076			13,543			14,313		

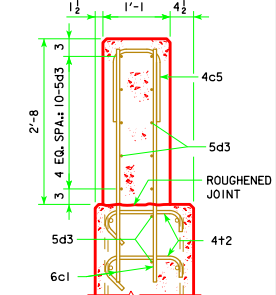
NOTE: ALL BARRIER RAIL REINFORCEMENT TO BE EPOXY COATED IF EPOXY COATING OPTION IS USED. SEE SHEET H30-01-06.

* TRAFFIC FACE 5d3 BARS MAY REQUIRE FIELD CUTTING OR BENDING FOR HIGHER SKEW BRIDGES.

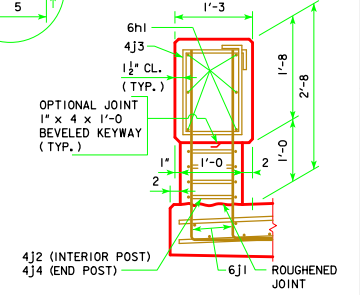
BENT BAR DETAILS



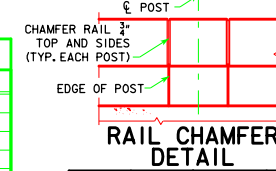
SECTION C-C



SECTION D-D



PART SECTION E-E



RAIL CHAMFER DETAIL

CONCRETE PLACEMENT SUMMARY - C.Y.

BRIDGE LENGTH	138'-10	151'-4	163'-10	176'-4	188'-10	201'-4	213'-10	226'-4	243'-0
OPEN RAIL SECTION	2 @ 0.077 CU. YDS. PER FT.	22.0	24.0	25.9	27.8	29.7	31.7	33.6	38.1
OPEN RAIL-END SECTION	4 @ 0.687 CU. YDS.	2.7	2.7	2.7	2.7	2.7	2.7	2.7	2.7
OPEN RAIL-ABUT. DIAPH. SECTION	4 @ 0.107 CU. YDS. PER FT.					1.9	1.9	1.9	1.9
OPEN RAIL-END POSTS	4 @ 0.11 CU. YDS.	0.4	0.4	0.4	0.4	0.4	0.4	0.4	0.4
OPEN RAIL-INTERIOR POSTS	2 x "E" @ 0.07 CU. YDS.	2.4	2.5	2.8	3.1	3.2	3.5	3.6	4.2
TOTAL (C.Y.)		27.5	29.6	31.8	34.0	36.0	40.2	44.4	47.3

CONCRETE QUANTITIES SHOWN ARE BASED ON 45° SKEW. FOR "E" SEE SHEET H30-42-06.

OPEN CONCRETE RAIL, TL-4 QUANTITIES - L.F.

BRIDGE LENGTH	138'-10	151'-4	163'-10	176'-4	188'-10	201'-4	213'-10	226'-4	243'-0
OPEN CONCRETE RAILING, TL-4 0° SKEW	311.7	336.7	361.7	386.7	411.7	456.7	481.7	506.7	540.0
OPEN CONCRETE RAILING, TL-4 15° SKEW	311.9	336.9	361.9	386.9	411.9	456.7	481.7	506.7	540.0
OPEN CONCRETE RAILING, TL-4 30° SKEW	312.6	337.6	362.6	387.6	412.6	456.7	481.7	506.7	540.0
OPEN CONCRETE RAILING, TL-4 45° SKEW	314.2	339.2	364.2	389.2	414.2	456.7	481.7	506.7	540.0

REVISED 05-11 - CORRECTED THE OPEN RAIL REBAR QUANTITIES FOR THE 201'-4, 231'-10, 226'-4, & 243'-0 BRIDGE LENGTHS.

LATEST REVISION DATE

05-11

APPROVED BY BRIDGE ENGINEER

Thomas E. M. Donnell

Iowa Department of Transportation
Highway Division

STANDARD DESIGN - 30' ROADWAY, THREE SPAN BRIDGES

PRETENSIONED PRESTRESSED CONCRETE BEAM BRIDGES

DECEMBER, 2006

OPEN RAIL, TL-4 DETAILS

SHEET 2 OF 2

H30-43-06