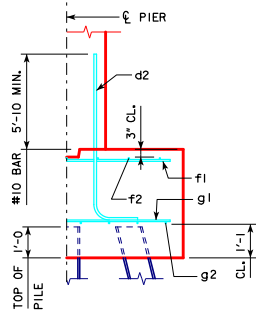
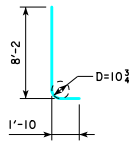


REVISED 05-13 - REVISION FOR LRFD PILE DESIGN.
REVISED 09-2016 - CHANGED VERTICAL CLEARANCE OF REBAR - F2* TO TOP OF PIER FOOTING TO 3" (WAS 2").



TYPICAL SECTION

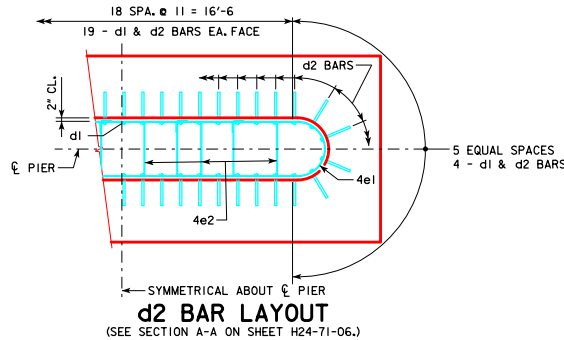


d2

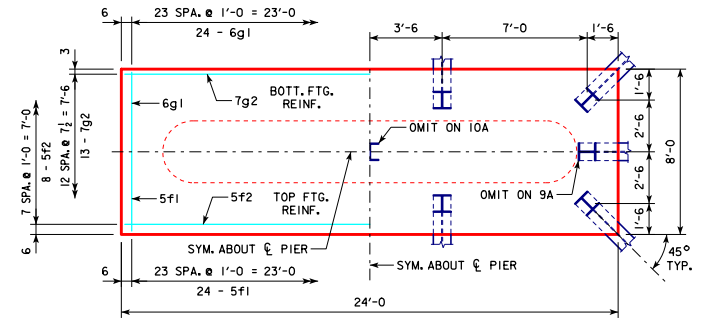
NOTE: D = PIN DIAMETER.
DIMENSIONS ARE OUT TO OUT.

H IN FT.	CL ABUT. BRG.	PILING (HP10x57)		FOOTING SIZE
		NO. & LAYOUT	① LRFD P _u STRENGTH I _b DES. LOAD (KIPS)	
8	201'-4	9A	214	3'-6 x 8' x 24'
16 TO 21	213'-10	10A	187	
	226'-4	10A	197	
	243'-0	10A	202	
16 TO 21	201'-4	10A	186	3'-6 x 8' x 24'
19 TO 24	213'-10	10A	193	
	226'-4	10A	201	
	243'-0	10A	208	
24 TO 29	201'-4	10B	191	3'-6 x 9' x 24'
	213'-10	10B	198	
	226'-4	10B	206	
	243'-0	10B	213	

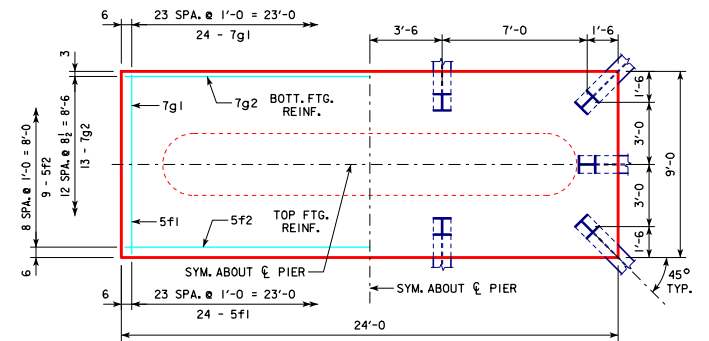
FOOTING SIZE	REINFORCING STEEL (ONE FOOTING)				STRUCTURAL CONCRETE (CY)
	BAR	NO., SIZE & SPACING	LENGTH	WEIGHT (LB.)	
3'-6 x 8' x 24'	d2	46 - #10 AS SHOWN	10'-0	1979	24.9
	f1	24 - #5 @ 1'-0	7'-8	192	
	f2	8 - #5 @ 1'-0	23'-8	197	
	g1	24 - #6 @ 1'-0	7'-8	276	
	g2	13 - #7 @ 0'-7 1/2	23'-8	629	
	d2	46 - #10 AS SHOWN	10'-0	1979	
3'-6 x 9' x 24'	d2	46 - #10 AS SHOWN	10'-0	1979	28.0
	f1	24 - #5 @ 1'-0	8'-8	217	
	f2	9 - #5 @ 1'-0	23'-8	222	
	g1	24 - #7 @ 1'-0	8'-8	425	
	g2	13 - #7 @ 0'-8 1/2	23'-8	629	
	d2	46 - #10 AS SHOWN	10'-0	1979	



① NOTE: P_u STRENGTH I DESIGN LOAD (KIPS) IS NOT THE VALUE
USED IN THE FIELD FOR DRIVING PILES.



3'-6 x 8'-0 x 24'-0 FOR 9A & 10A



3'-6 x 9'-0 x 24'-0 FOR 10B

FOOTING NOTES:

THESE FOOTINGS ARE DESIGNED AND DETAILED TO BE USED WITH THE CAP AND COLUMN DETAILS OF THE TEE PIERS AS SHOWN ON SHEET H24-71-06.

BATTER PILES IN EXTERIOR ROWS 1/4 IN THE DIRECTION SHOWN.

STEEL PILING USED AS POINT BEARING SHALL HAVE A MINIMUM DISTANCE OF APPROXIMATELY 10 FEET FROM BOTTOM OF FOOTING TO TOP OF BEARING ROCK. THE PILE LAYOUTS ARE SUCH THAT THE DISTANCE CENTER TO CENTER OF ADJACENT PILING SHALL NOT EXCEED 8'-0.

PIER PILES SHALL BE DRIVEN TO VALUES SHOWN IN DESIGN PLANS.

09-2016 LATEST REVISION DATE	Approved by BRIDGE ENGINEER <i>Thomas E. McQuill</i>		PRETENSIONED PRESTRESSED CONCRETE BEAM BRIDGES DECEMBER, 2006
		STANDARD DESIGN - 24' ROADWAY, THREE SPAN BRIDGE	
TEE PIER-HP10x57 SRL-2 STEEL PILE FOOTINGS		H24-74-06	
45° SKEW - H=16' TO 24'			