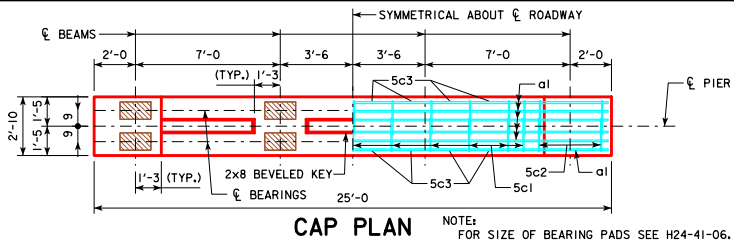
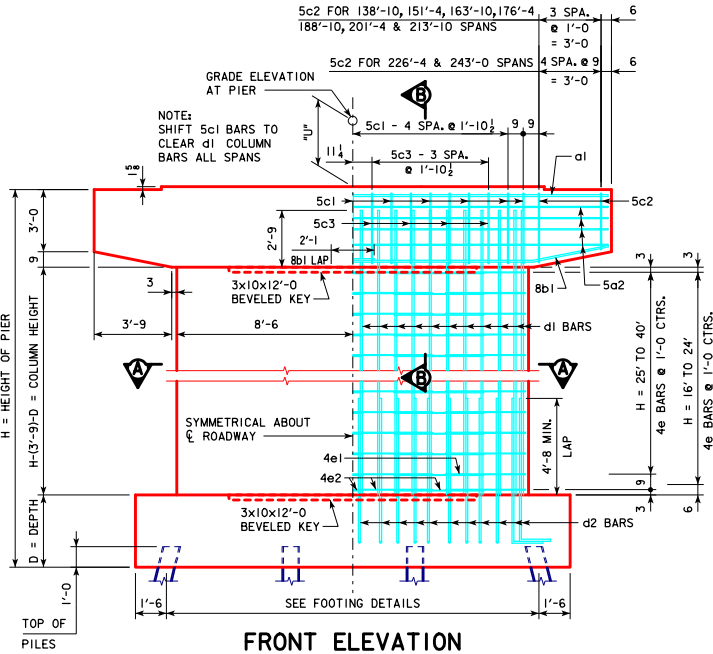


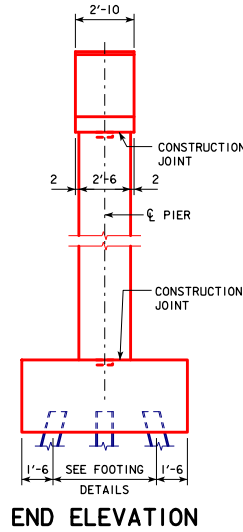
REVISED 01-10 - SHEET WAS REVISED TO MEET LBFD SPECIFICATIONS.
 REVISED 09-2016 - CHANGED PIER COLUMN CAP AND FOOTING KEYWAY TO 3" x 10" WAS 2" x 8".
 REVISED 10-2016 - CHANGED BEVELED KEYWAY LENGTH OF PIER COLUMN CAP AND FOOTING TO BE 5'-0" LESS THAN WIDTH OF PIER COLUMN WAS 14'-0".



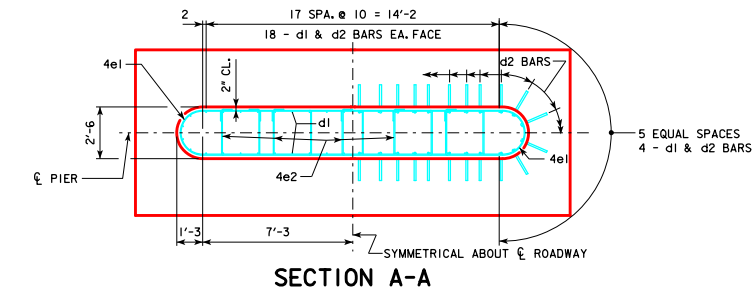
CAP PLAN NOTE: FOR SIZE OF BEARING PADS SEE H24-41-06.



FRONT ELEVATION



END ELEVATION



SECTION A-A

PIER NOTES:

SEE "TEE PIER NOTES" ON H24-02-06 FOR NOTES REGARDING APPLICATION OF THESE PIER STANDARDS.

MINIMUM CLEAR DISTANCE FROM FACE OF CONCRETE TO NEAR REINFORCING BAR SHALL BE 2 INCHES UNLESS OTHERWISE NOTED OR SHOWN.

ELIMINATE 2x8 BEVELED KEYWAY ON TOP OF CAP FOR EXPANSION PIERS.

SEE SHEET H24-09-06 FOR "U" DIMENSION.

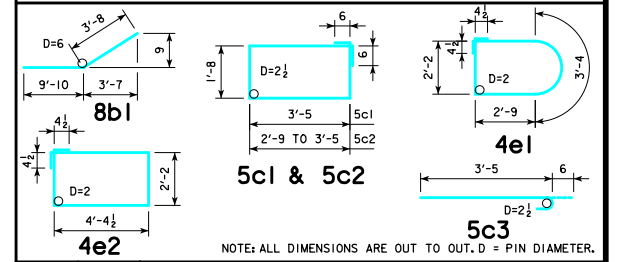
CAP

REINFORCING STEEL	ABUT. BEARINGS		138'-10"		151'-4"		163'-10"		176'-4"		188'-10"		201'-4"		213'-10"		226'-4"		243'-0"					
	BAR	LENGTH	NO.	SIZE	WEIGHT	NO.	SIZE	WEIGHT	NO.	SIZE	WEIGHT	NO.	SIZE	WEIGHT	NO.	SIZE	WEIGHT	NO.	SIZE	WEIGHT	NO.	SIZE	WEIGHT	
a1	24'-8"		6	8	395	6	8	395	6	8	395	6	8	395	6	8	395	6	9	503	6	9	503	
5a2	24'-8"		8	5	206	8	5	206	8	5	206	8	5	206	8	5	206	8	5	206	8	5	206	
8b1	13'-6"		8	8	288	8	8	288	8	8	288	8	8	288	8	8	288	8	8	288	8	8	288	
5c1	11'-2"		22	5	256	22	5	256	22	5	256	22	5	256	22	5	256	22	5	256	22	5	256	
5c2	VARIABLES		16	5	175	16	5	175	16	5	175	16	5	175	16	5	175	20	5	219	20	5	219	
5c3	3'-11"		16	5	65	16	5	65	16	5	65	16	5	65	16	5	65	16	5	65	16	5	65	
TOTAL (LB.)			1385		1385		1385		1385		1385		1385		1385		1537		1537					
STRUCTURAL CONCRETE (CY)			9.8		9.8		9.8		9.8		9.8		9.8		9.8		9.8							

COLUMN

H IN FEET	COLUMN HEIGHT	STRUCTURAL CONCRETE (CY)	REINFORCING STEEL						TOTAL WEIGHT (LB.)						
			d1 BAR	4e1 BAR	4e2 BAR	NO.	SIZE	LENGTH		WEIGHT	NO.	SIZE	LENGTH	WEIGHT	NO.
16	8'-9"	13.3	44	9	11'-6"	1720	18	4	11'-9"	141	36	4	13'-10"	333	2194
17	9'-9"	14.9	44	9	12'-6"	1870	20	4	11'-9"	157	40	4	13'-10"	370	2397
18	10'-9"	16.4	44	9	13'-6"	2020	22	4	11'-9"	173	44	4	13'-10"	407	2600
19	11'-9"	17.9	44	9	14'-6"	2169	24	4	11'-9"	188	48	4	13'-10"	444	2801
20	12'-9"	19.4	44	9	15'-6"	2319	26	4	11'-9"	204	52	4	13'-10"	481	3004
21	13'-9"	21.0	44	9	16'-6"	2468	28	4	11'-9"	220	56	4	13'-10"	517	3205
22	14'-9"	22.5	44	9	17'-6"	2618	30	4	11'-9"	235	60	4	13'-10"	554	3407
23	15'-9"	24.0	44	9	18'-6"	2768	32	4	11'-9"	251	64	4	13'-10"	591	3610
24	16'-9"	25.5	44	9	19'-6"	2917	34	4	11'-9"	267	68	4	13'-10"	628	3812
25	17'-3"	26.3	44	9	20'-0"	2992	36	4	11'-9"	283	72	4	13'-10"	665	3940
26	18'-3"	27.8	44	9	21'-0"	3142	38	4	11'-9"	298	76	4	13'-10"	702	4142
27	19'-3"	29.3	44	9	22'-0"	3291	40	4	11'-9"	314	80	4	13'-10"	739	4344
28	20'-3"	30.9	44	9	23'-0"	3441	42	4	11'-9"	330	84	4	13'-10"	776	4547
29	21'-3"	32.4	44	9	24'-0"	3590	44	4	11'-9"	345	88	4	13'-10"	813	4748
30	22'-3"	33.9	44	9	25'-0"	3740	46	4	11'-9"	361	92	4	13'-10"	850	4951
31	23'-3"	35.4	44	9	26'-0"	3890	48	4	11'-9"	377	96	4	13'-10"	887	5154
32	24'-3"	37.0	44	9	27'-0"	4039	50	4	11'-9"	392	100	4	13'-10"	924	5355
33	25'-3"	38.5	44	9	28'-0"	4189	52	4	11'-9"	408	104	4	13'-10"	961	5558
34	26'-3"	40.0	44	9	29'-0"	4338	54	4	11'-9"	424	108	4	13'-10"	998	5760
35	27'-3"	41.5	44	9	30'-0"	4488	56	4	11'-9"	440	112	4	13'-10"	1035	5963
36	28'-3"	43.1	44	9	31'-0"	4638	58	4	11'-9"	455	116	4	13'-10"	1072	6165
37	29'-3"	44.6	44	9	32'-0"	4787	60	4	11'-9"	471	120	4	13'-10"	1109	6367
38	30'-3"	46.1	44	9	33'-0"	4937	62	4	11'-9"	487	124	4	13'-10"	1146	6570
39	31'-3"	47.6	44	9	34'-0"	5086	64	4	11'-9"	502	128	4	13'-10"	1183	6771
40	32'-3"	49.2	44	9	35'-0"	5236	66	4	11'-9"	518	132	4	13'-10"	1220	6974

BENT BAR DETAILS



Iowa Department of Transportation
 Highway Division
 STANDARD DESIGN - 24' ROADWAY, THREE SPAN BRIDGE
PRETENSIONED PRESTRESSED CONCRETE BEAM BRIDGES
 DECEMBER, 2006

LATEST REVISION DATE: 10-2016
 APPROVED BY BRIDGE ENGINEER: *Thomas E. McQuillan*

TEE PIER CAP AND COLUMN
 0° SKEW

H24-50-06