

SECTION A-A

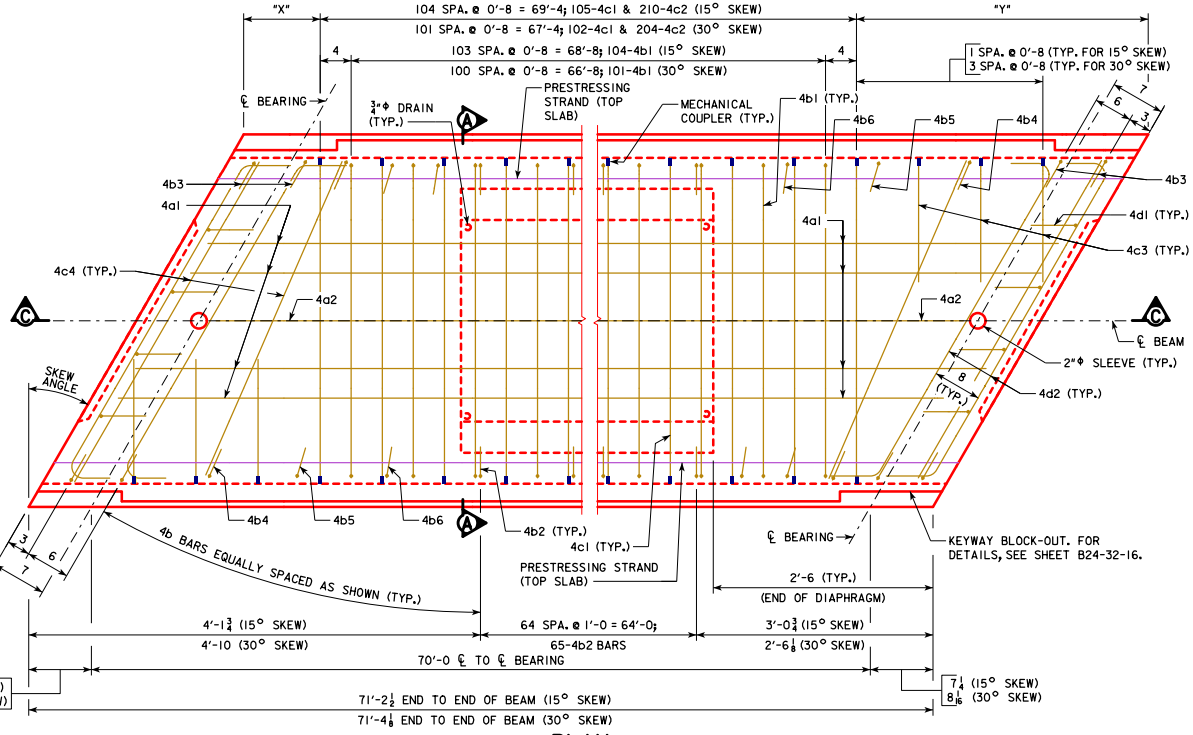
NOTE:
OMIT KEYWAY, MECHANICAL COUPLERS, AND 4c2 BARS ON EXTERIOR FACE OF EXTERIOR BEAMS.

TABLE OF DIMENSION DATA



BEAM LINE	15° SKEW		30° SKEW	
	"x"	"y"	"x"	"y"
A	2 3/8	1'-7 1/4	11	3'-1 1/4
B	3 1/2	1'-7	10 3/8	3'-1 1/2
C	4 3/8	1'-6 1/4	10 3/8	3'-1 1/2
D	5 1/4	1'-5 1/4	10	3'-2 1/4
E	6 1/8	1'-4 3/4	9 1/2	3'-2 3/8
F	7	1'-3 1/2	9 1/2	3'-2 3/8

NOTE:
FOR BEAM LINE DESIGNATIONS, SEE SHEET B24-06-16.

NOTES:
FOR VIEW B-B, SEE SHEET B24-48-16.
4a1 AND 4a2 BARS SHALL BE LAP SPLICED 1'-7" MINIMUM AT MIDSPAN.
FOR BEAM CHAMFER DETAILS, SEE SHEET B24-33-16.



PLAN
(30° SKEW SHOWN, 15° SKEW SIMILAR) (INTERIOR BEAM SHOWN, EXTERIOR BEAM SIMILAR)
(PRESTRESSING STRANDS IN BOTTOM SLAB AND 4c2 BARS NOT SHOWN FOR CLARITY)

LATEST REVISION DATE	 APPROVED BY BRIDGE ENGINEER	 STANDARD DESIGN - 24'-0 ROADWAY, SINGLE SPAN CONCRETE BOX BEAM BRIDGES	B24-50-16
		DECEMBER, 2016	
		33" x 48" x 70'-0 PPCBB DETAILS 15° AND 30° SKEW	