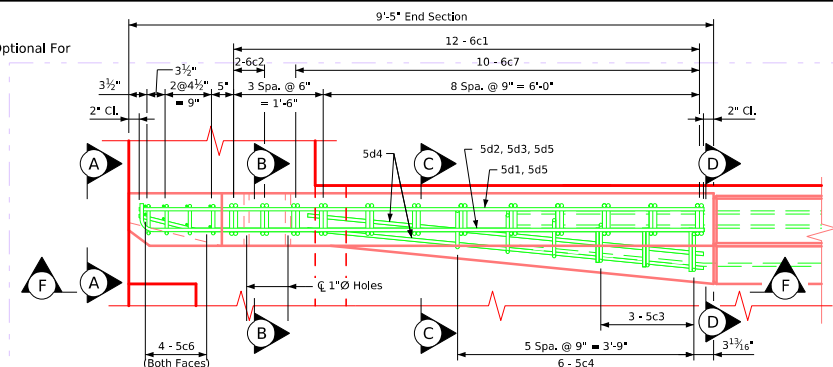

[illegible]

Note:
 0° skew shown, 15° skew similar.
 Slab and abutment bars are not shown for clarity.
 Construction joint between top of abutment wing/slab and barrier
 rail is roughened concrete.
 The 6c2, 5c4, 5c6, 6c7, 5h5, and 5h7 bars are to be placed with the
 abutment cap and slab.
 For Bar List, Bent Bar Details, Sections A-A, B-B, C-C, and D-D see
 Sheet J305-29-25.



Latest Revision Date Approved By Bridge Engineer <i>[Signature]</i>		
	Standard Design - 30'-0" Roadway, Single Span Bridge <h2 style="text-align: center;">Single Span Concrete Slab Bridges</h2> <p style="text-align: center;">July, 2025</p>	
	Single Slope Rail End Section Details for High Abutments	<h2 style="text-align: center;">J30S-28-25</h2>