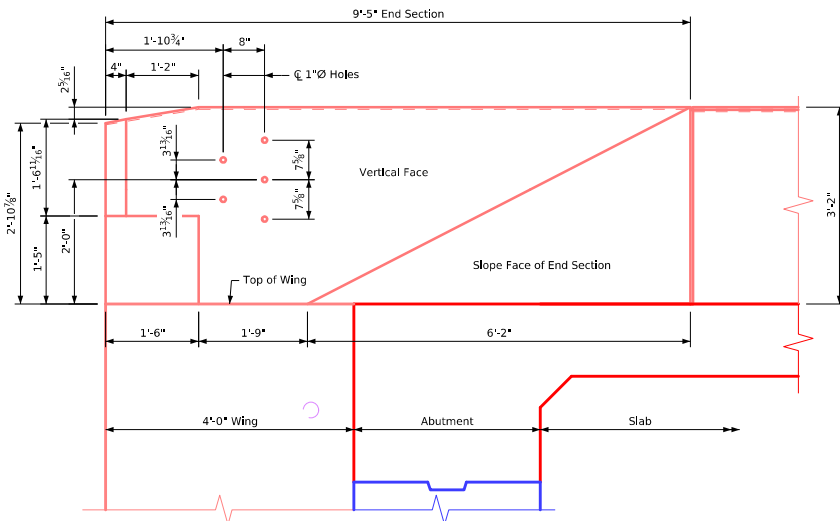


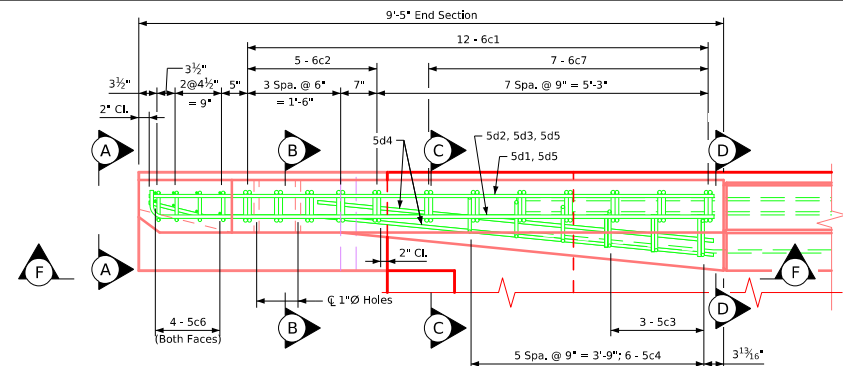
**Part Plan View**



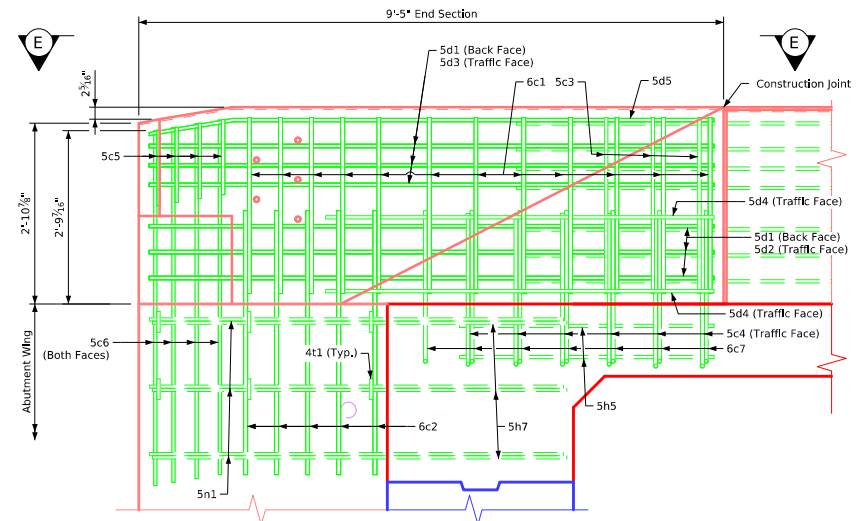
**Part Elevation View**

Provide 5 holes formed with 1"Ø plastic conduit.  
Cost to be Included In price of bld for Concrete Barrier Railing.


Note:  
0° skew shown, other skew angles are similar.  
Slab and abutment bars are not shown for clarity.  
4t1 placement - 3 bars each at top two rows of 5n1/5h7 bars in abutment wing and abutment cap.  
Construction joint between top of abutment wing/slab and barrier rail is roughened concrete.  
The 6c2, 5c4, 5c6, 6c7, and 4t1 bars are to be placed with the abutment wing and abutment cap.  
Dashed lines below the top of wing are the abutment wing reinforcing steel.  
For Bar List, Bent Bar Details, Sections A-A, B-B, C-C, and D-D see Sheet J30S-27-25.



**Part View E-E**



**Part View F-F**

Latest Revision Date	 Approved by Bridge Engineer	<div data-bbox="1675 1203 1906 1242" data-label="Image"> </div> <div data-bbox="1598 1252 1961 1274" data-label="Text"> <p>Standard Design - 30'-0" Roadway, Single Span Bridge</p> </div> <div data-bbox="1575 1279 2003 1312" data-label="Section-Header"> <h2>Single Span Concrete Slab Bridges</h2> </div> <div data-bbox="1745 1317 1829 1338" data-label="Text"> <p>July, 2025</p> </div> <div data-bbox="1612 1346 1801 1404" data-label="Text"> <p>Single Slope Rail End Section Details for Integral Abutments</p> </div> <div data-bbox="1864 1360 2003 1390" data-label="Text"> <p><b>J30S-26-25</b></p> </div>	
----------------------	--	--	--