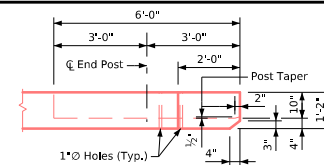


Section C-C

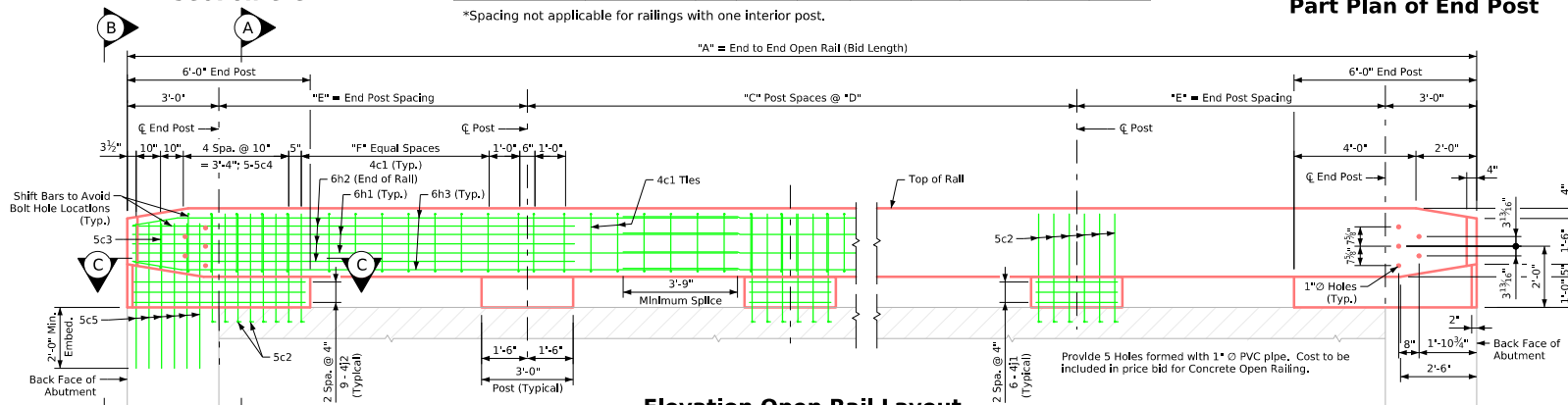
Table of Open Rail Dimensions and Numbers		20'-0"		30'-0"		40'-0"		50'-0"	
Span Skew	Dimensions or Number	0°	15°	0°	15°	0°	15°	0°	15°
		A	23'-0"	22'-8 1/4"	33'-0"	32'-8 1/4"	43'-0"	42'-8 1/4"	53'-0"
	C	*	*	1	1	2	2	3	3
	D	*	*	8'-0"	7'-10 3/4"	8'-6"	8'-5 1/16"	8'-9 5/8"	8'-8 7/8"
	E	8'-6"	8'-4 1/8"	9'-6"	9'-4 3/4"	10'-0"	9'-11 1/16"	10'-3 5/8"	10'-2 7/8"
	F	5	5	6	6	6	6	7	7

*Spacing not applicable for railings with one interior post.

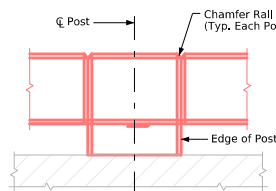
*A" = End to End Open Rail (Bid Length)



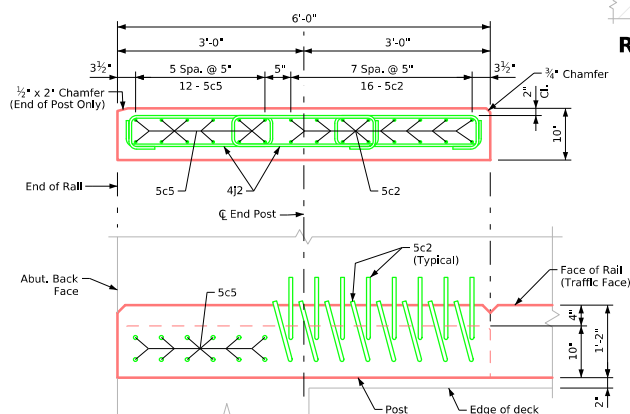
Part Plan of End Post



Elevation Open Rail Layout

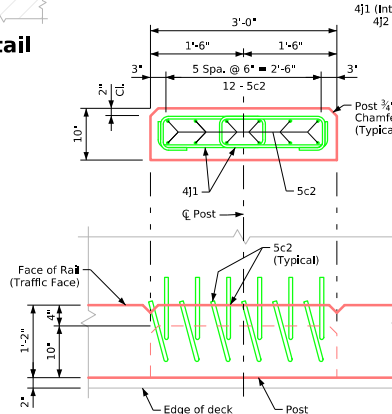


Rail Chamfer Detail

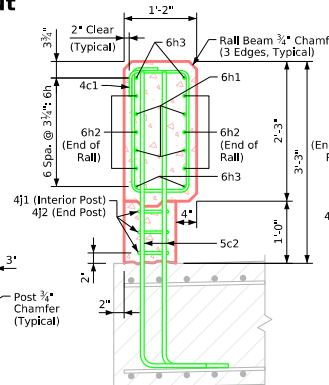


End Post Details

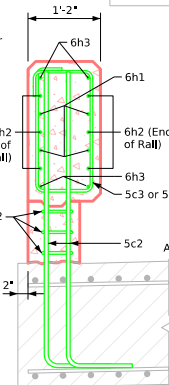
(0° Skew Shown - See J245-11-25 for Detail Showing 15° Skew)



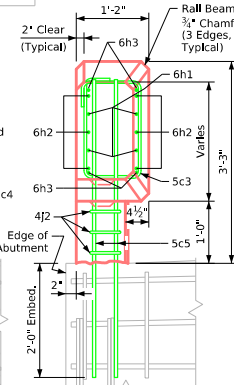
Interior Post Details



Typical Rail Section



Section A-A
(At End Post)



View B-B

Latest Revision Date	 Approved By Bridge Engineer	 Standard Design - 24'-0" Roadway, Single Span Bridge Single Span Concrete Slab Bridges July, 2025	
		Open Barrier Rail Details for High Abutments	
		J245-28-25	