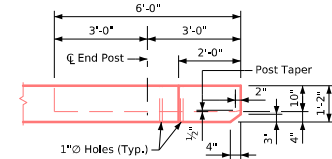
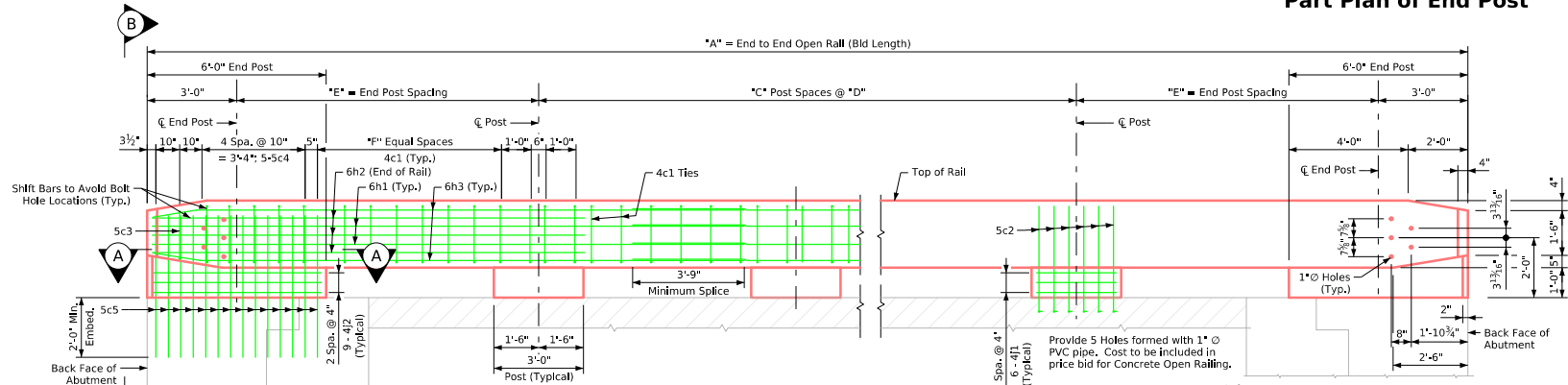


Table of Open Rail Dimensions and Numbers

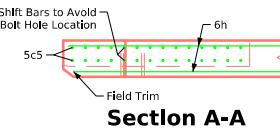
Span		20'-0"				30'-0"				40'-0"				50'-0"			
Skew		0°	15°	30°	45°	0°	15°	30°	45°	0°	15°	30°	45°	0°	15°	30°	45°
Dimensions or Number	A	31'-0"	31'-1 1/4"	31'-5 9/16"	32'-2 15/16"	41'-0"	41'-1 1/4"	41'-5 9/16"	42'-2 15/16"	51'-0"	51'-1 1/4"	51'-5 9/16"	52'-2 15/16"	61'-0"	61'-1 1/4"	61'-5 9/16"	62'-2 15/16"
	C	1	1	1	1	2	2	2	2	3	3	3	3	4	4	4	4
	D	7'-4"	7'-4 7/16"	7'-5 7/8"	7'-9"	8'-0"	8'-0 5/16"	8'-1 3/8"	8'-3 3/4"	8'-4 13/16"	8'-5 1/16"	8'-5 15/16"	8'-7 13/16"	8'-8"	8'-8 3/16"	8'-8 15/16"	8'-10 1/2"
	E	8'-10"	8'-10 7/16"	8'-11 7/8"	9'-3"	9'-6"	9'-6 5/16"	9'-7 3/8"	9'-9 3/4"	9'-10 13/16"	9'-11 1/16"	9'-11 15/16"	10'-1 13/16"	10'-2"	10'-2 3/16"	10'-2 15/16"	10'-4 1/2"
	F	6	6	6	6	6	6	6	6	7	7	7	7	7	7	7	7



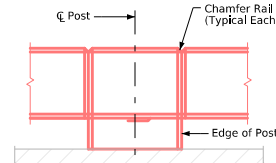
Part Plan of End Post



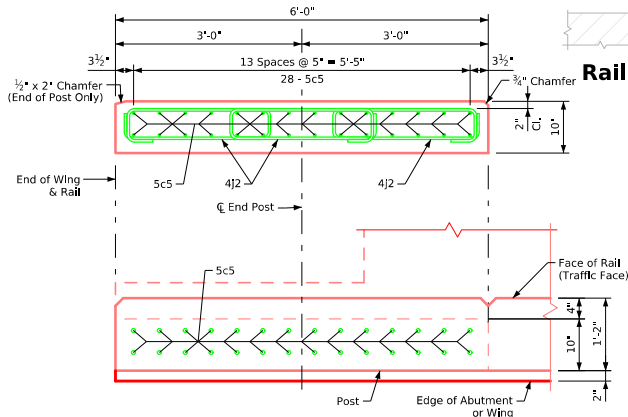
Elevation of Open Rail Layout



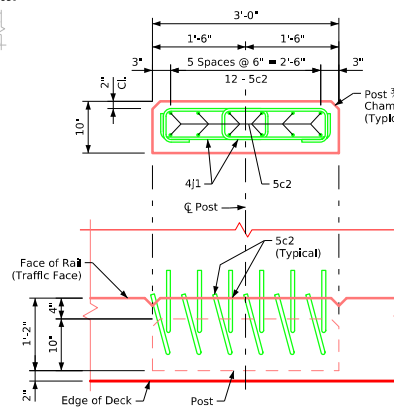
Section A-A



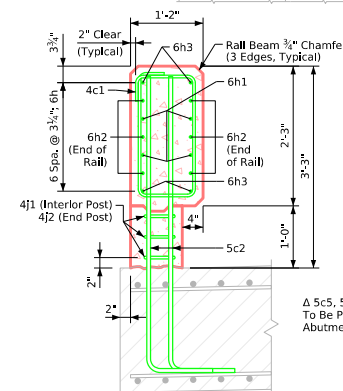
Rail Chamfer Detail



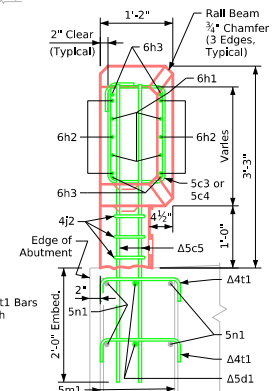
End Post Details



Interior Post Details



Typical Rail Section



View B-B

Latest Revision Date <i>Approved by Bridge Engineer</i>	IOWA DOT	
	Standard Design - 24'-0" Roadway, Single Span Bridge	
	Single Span Concrete Slab Bridges	
Open Barrier Rail Details for Integral Abutments		J24S-26-25