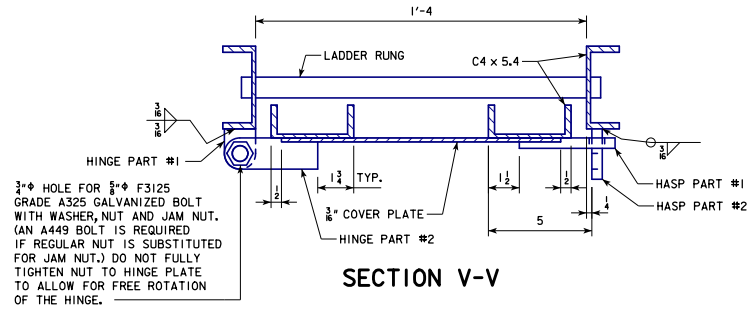
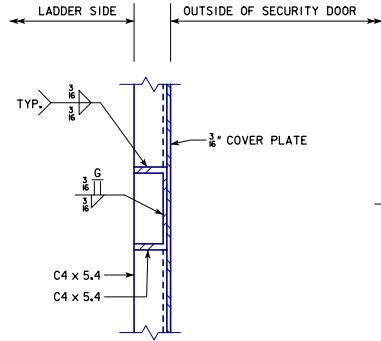


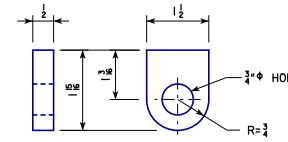
\*REVISED 07-2017; MODIFIED FORMATTING OF CALLOUTS.  
 \*REVISED 03-2019; MODIFIED SECTION V-V, FASTENER NOTE TO ADDRESS CHANGE IN ASTM SPECIFICATIONS. UPDATED BRIDGE ENGINEER SIGNATURE.  
 \*STEEL OVERHEAD SIGN TRUSS.DGN - SOST-16-11 - THIS SHEET ISSUED 03-2013.



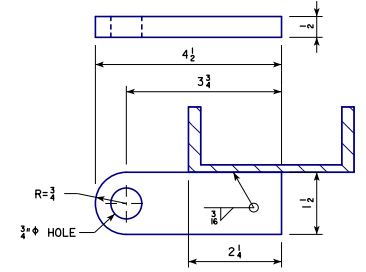
**SECTION V-V**



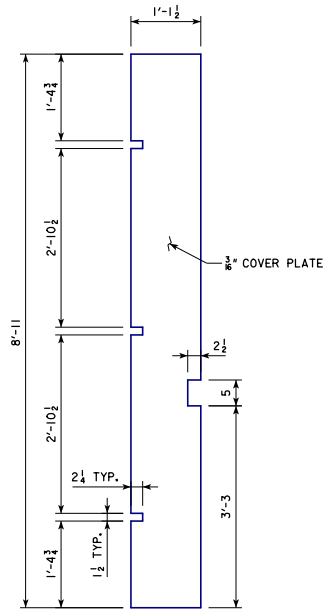
**SECTION W-W**



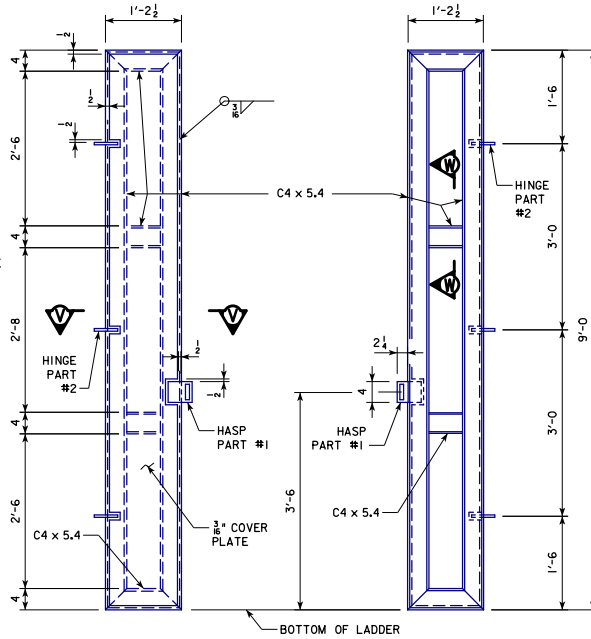
**HINGE PART #1**



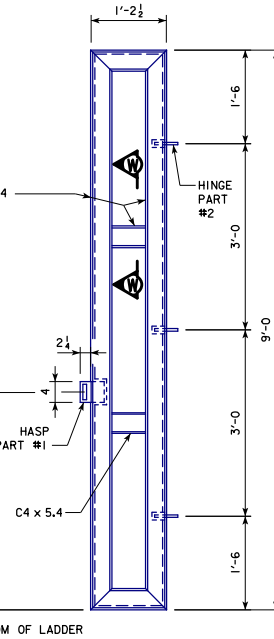
**HINGE PART #2**



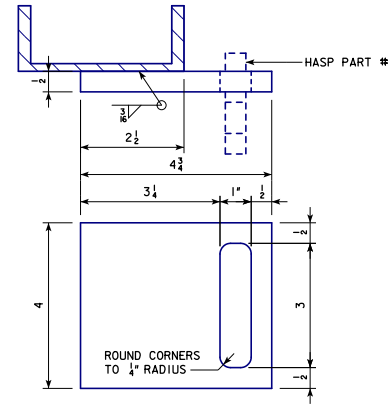
**3/16" COVER PLATE DETAIL**



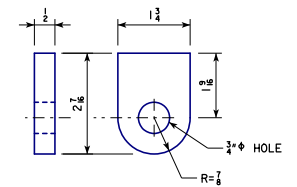
**SECURITY DOOR ELEV. FRONT SIDE OF DOOR**



**SECURITY DOOR ELEV. BACK (LADDER) SIDE OF DOOR**



**HASHPART #1**



**HASHPART #2**

03-2019  
 LATEST REVISION DATE  
  
 APPROVED BY BRIDGE ENGINEER

**IOWADOT** Highway Division

STANDARD DESIGN

**STEEL OVERHEAD SIGN TRUSS**

SEPTEMBER, 2011

**DMS LADDER SECURITY DOOR DETAILS**  
50'-130' SPANS

**SOST-16-11**