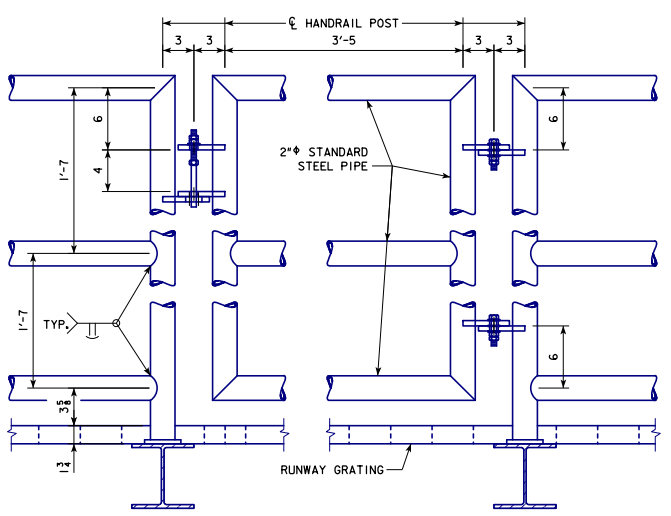
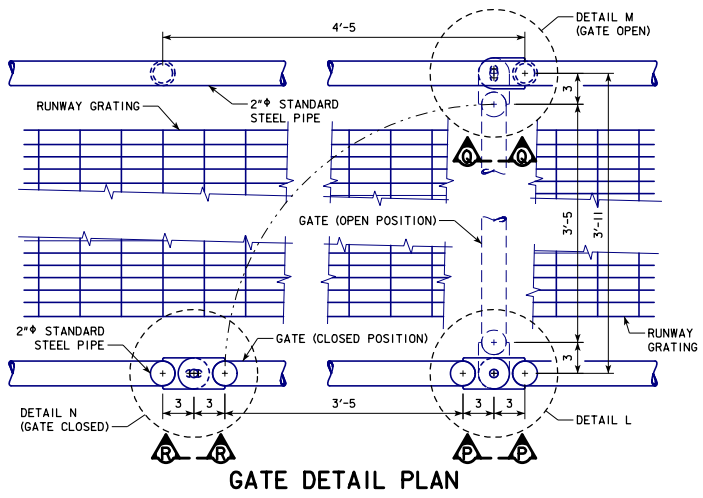
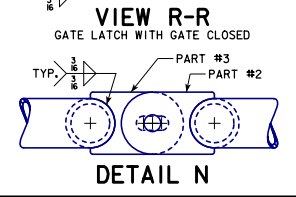
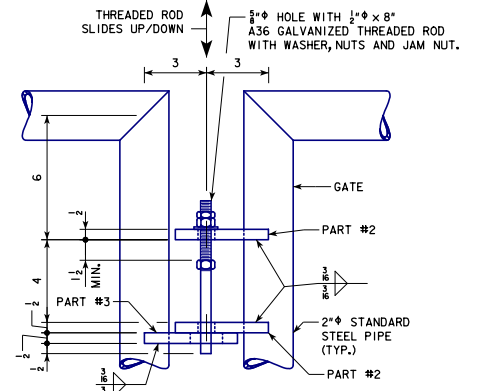
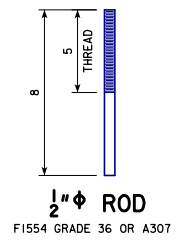
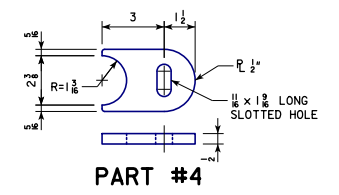
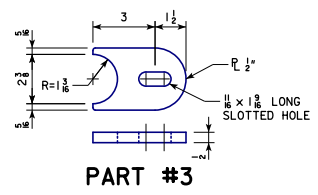
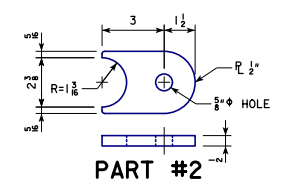
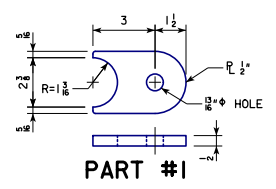
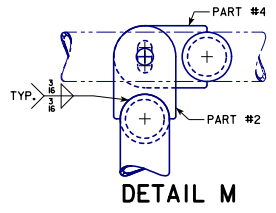
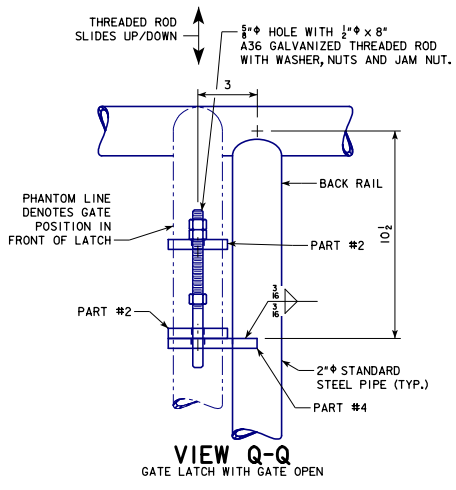
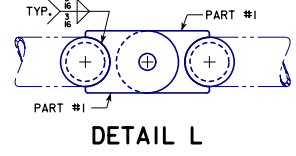
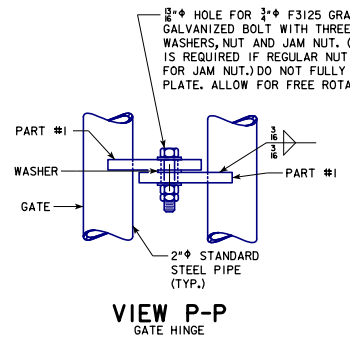


*REVISED 07-2017, CORRECTED WELD SIZE IN VIEW Q-Q TO 3/8" (WAS 1/2") TO MATCH THAT SHOWN IN OTHER DETAILS.
 *REVISED 03-2019, MODIFIED VIEW P-P FASTENER NOTE AND 1/2" ROD DESCRIPTION TO ADDRESS CHANGES IN ASTM SPECIFICATIONS. CORRECTED VIEW Q-Q CALLOUT FROM 2 1/2" x 1/4" TUBE TO 2" x 1/2" STANDARD STEEL PIPE.
 *REVISED 03-2019, MODIFIED FASTENER NOTE AND 1/2" ROD DESCRIPTION TO ADDRESS CHANGES IN ASTM SPECIFICATIONS. CORRECTED VIEW Q-Q CALLOUT FROM 2 1/2" x 1/4" TUBE TO 2" x 1/2" STANDARD STEEL PIPE.
 *STEEL OVERHEAD SIGN TRUSS.DGN - SOST-14-11 - THIS SHEET ISSUED 03-2013.



GATE DETAIL ELEVATION
GATE LOCATED OVER SHOULDER OF ROADWAY



03-2019 LATEST REVISION DATE APPROVED BY BRIDGE ENGINEER	 STANDARD DESIGN STEEL OVERHEAD SIGN TRUSS SEPTEMBER, 2011
	DMS RUNWAY GATE DETAILS
	SOST-14-11 50'-130' SPANS