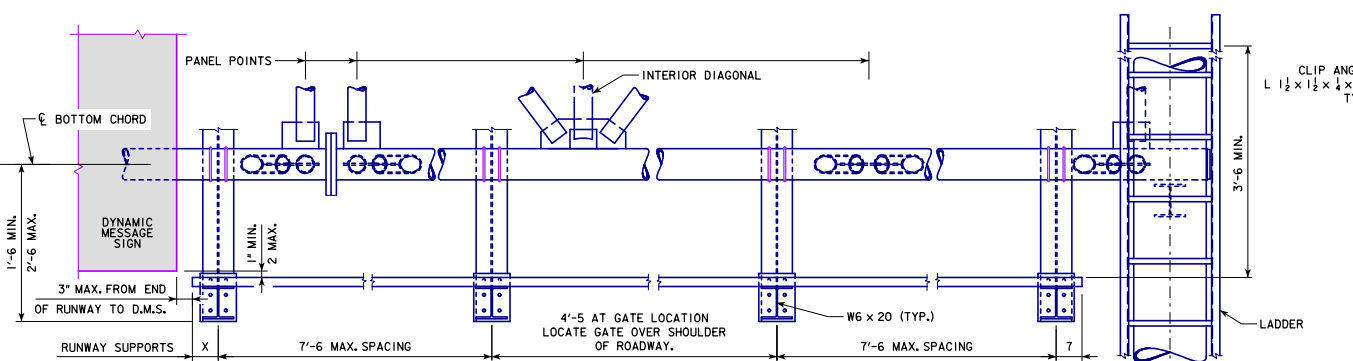
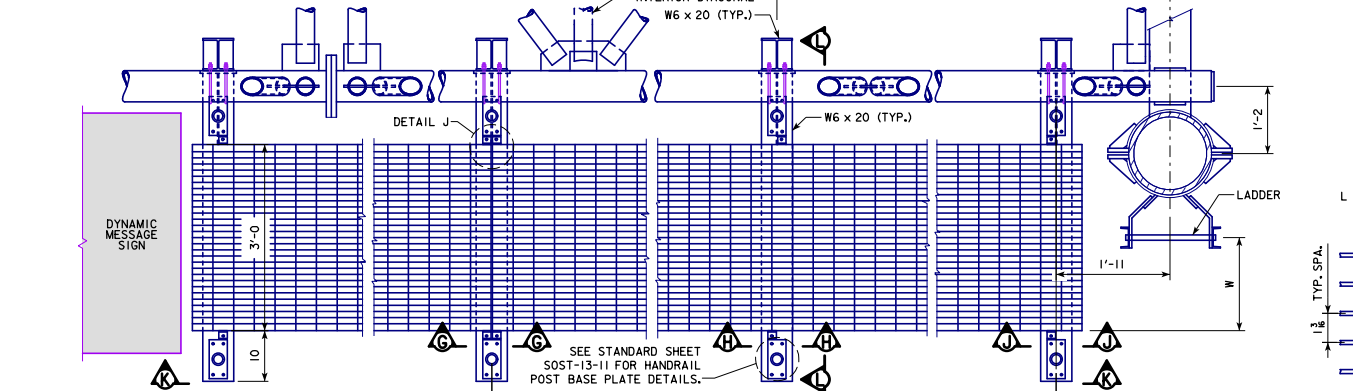


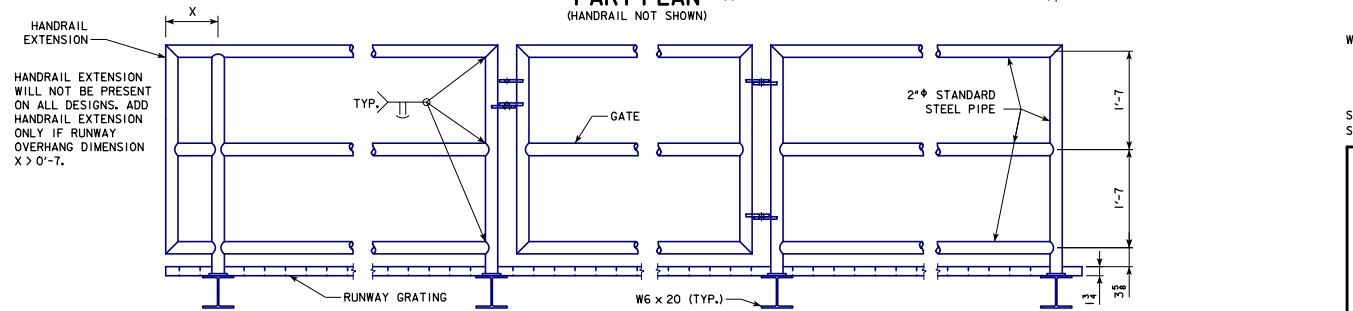
\*REVISED 07-2017; MODIFIED NOTES, CORRECTED DIMENSION IN "PART PLAN" DETAIL, SHOWING DISTANCE FROM FREE END OF HORIZONTAL W6 X 20 TO RUNWAY GRATING TO 10" (MAX. 9'-2").  
 \*REVISOR 03-2019; MODIFIED GRATING CLIP ANGLE FASTENER NOTE TO ADDRESS CHANGE IN ASTM SPECIFICATIONS. ADDED CLIP ANGLE FASTENER DETAIL TO IMPROVE CLARITY. UPDATED BRIDGE ENGINEER SIGNATURE.  
 \*STEELOVERHEADSIGNSTRUSS.DGN - SOST-12-11 - THIS SHEET ISSUED 03-2013.



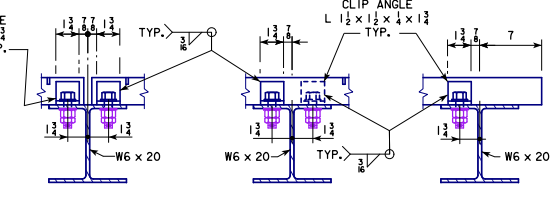
**PART ELEVATION**  
LOOKING IN DIRECTION OF TRAFFIC  
(HANDRAIL NOT SHOWN)



**PART PLAN**  
(HANDRAIL NOT SHOWN)



**VIEW K-K**  
SHOWING HANDRAIL AND GATE DETAILS  
(GATE IS LOCATED ONLY ON SIDE FARTHEST FROM TRUSS)

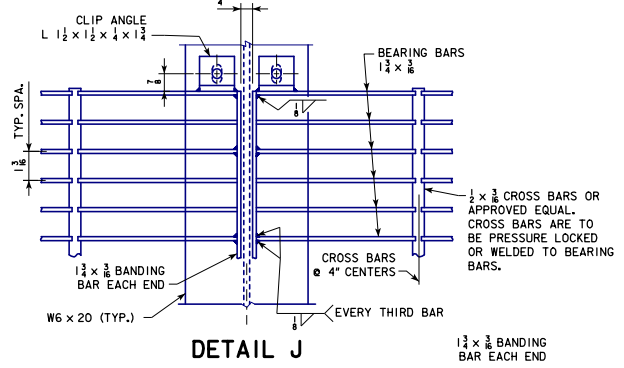


**SECTION G-G SECTION H-H SECTION J-J**

DRILL  $\frac{3}{8}$ "  $\phi$  HOLE IN CLIP ANGLE AND  $\frac{3}{8}$ " x 1" SLOTTED HOLE IN W6 x 20 FOR  $\frac{3}{8}$ "  $\phi$  F3125 GRADE A325 GALVANIZED BOLT WITH WASHERS, NUT AND JAM NUT (AN A449 BOLT IS REQUIRED IF REGULAR NUT IS SUBSTITUTED FOR JAM NUT.) ADJUST CLIP SO GRATING BEARS ON BEAM.

THE GALVANIZED STEEL BAR GRATING INCLUDING BEARING BAR, CROSS BARS AND BANDING BARS SHALL COMPLY WITH THE REQUIREMENTS OF ASTM A1011 TYPE 2.

| DIMENSION TABLE |                    |                        |
|-----------------|--------------------|------------------------|
| SPAN            | TRUSS SUPPORT POST | W                      |
| 50' - 100'      | HSS 14.000 x 0.500 | 1'-10 $\frac{1}{4}$ "  |
| 105' - 130'     | HSS 16.000 x 0.500 | 1'-8 $\frac{11}{16}$ " |



**DETAIL J**

SEE STANDARD SHEET SOST-13-11 FOR SECTION L-L.  
SEE STANDARD SHEET SOST-15-11 FOR LADDER DETAILS.

|   |  |
|---|--|
| 03-2019<br>LATEST REVISION DATE<br><br><br>APPROVED BY BRIDGE ENGINEER | <br>STANDARD DESIGN |
|   | <b>STEEL OVERHEAD SIGN TRUSS</b><br>SEPTEMBER, 2011  |
|   | <b>DMS RUNWAY DETAILS</b> <b>SOST-12-11</b><br>50'-130' SPANS  |